

ORACLE
1 9 5 9



THE 1959 ORACLE



INDIANA CENTRAL COLLEGE

INDIANAPOLIS, INDIANA



Our newly-completed Academic Hall.

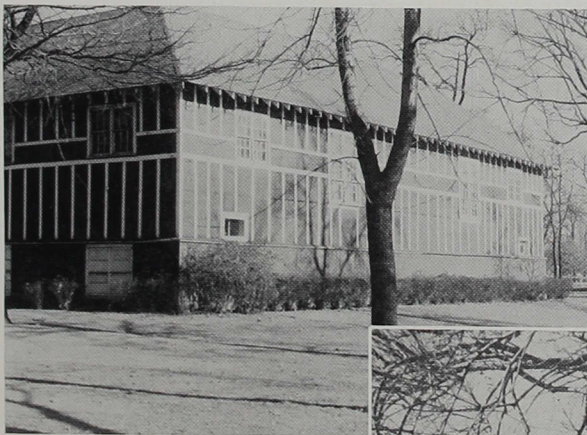
We Welcome the New - With Respect for the Old

The new Academic Hall is a fulfillment of a dream for all of us. Centralites have long awaited this gleaming new building, but at the same time they hold a certain nostalgia for the "Ad" Building and all the tradition contained therein. The Old must make way for the New, but the New will never completely replace the Old in the hearts of Indiana Central students.





Men's Hall for freshmen and sophomore men and Noblitt Observatory.



The Gymnasium, soon to be replaced by the Athletic Plant.



Dailey and Wilmore Halls, residence halls for women.



Buxton Hall, the residence of junior and senior men.

Scenes Around the New



We welcomed the New in the fall of 1958 as classes met for the first time in the Academic Hall. Centralites seemed a bit confused, and possibly even lost, as they hurried for appointments in unfamiliar locations. It did not take long, however, for the New to be made an integral part of our lives. The Academic Hall has provided a rich environment for many satisfying experiences.

Centralites have a pleasant, relaxed mealtime atmosphere in the new cafeteria.

The spacious and well-equipped library makes study a pleasure.





The two lounges provide for mental and physical rest.



The tastefully-styled lobby of the Academic Hall is a busy place.

The Campus Cupboard is an important part of life at Indiana Central. Neither the social nor the educational life of the student would be complete without the many services of the Cupboard.



Scenes Around the Old

Much has been changed in the Administration Building, but it has lost none of the character of which Centralites are fond. The "new look" and the familiar have been successfully integrated here.



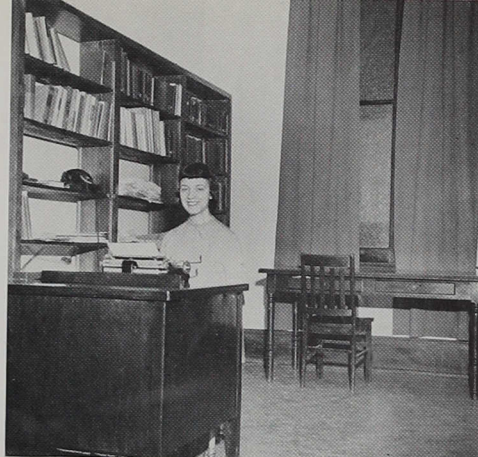
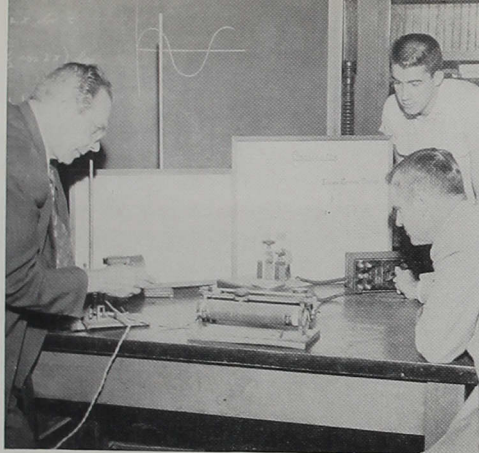
The art department has taken over the space vacated by the Campus Cupboard.



Where is everyone?

Our biology laboratory is much the same.



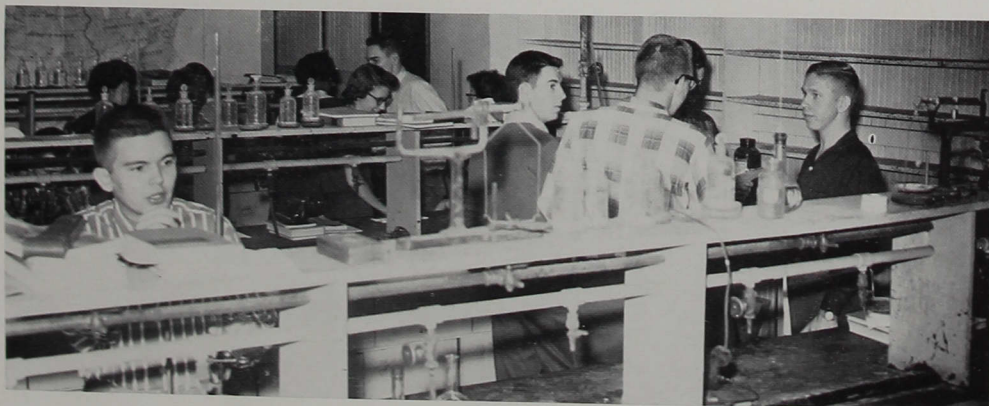


Professors Kolitschew and Sidebottom collaborate on a physics demonstration.

This is the Faculty Lounge? Not quite. It is now the education office where Linda Kirkham is secretary.

Room 214, familiarly known as the "Religion room," houses the studio of Professor Danek.

The old library was never like this. It has become a rehearsal hall for the band and orchestra.



The potential chemists are at it again!

A Beginning



Governor Harold W. Handley and other dignitaries participate in the dedication of the Academic Hall.



The birth of the Academic Hall ushered in a number of “firsts” at Indiana Central. The 1958 graduation ceremonies, shown at right, were held in its auditorium. Registration, the despair of both students and faculty, is now held in the Academic Hall, its greater area eliminating many problems. Chapel services are conducted in the auditorium. The quiet, reverent atmosphere brings us nearer to God in these morning meditations, and the excellent acoustics and seating facilities add to the students’ comfort. Another “first” which brings together the New and the Old is the seal of Indiana Central College now embedded in the patio of the Academic Hall.

And an End

Graduation may mean the end of one's days at I.C.C., but it is much more a beginning than an end. As these seniors end their college careers, they begin — with the knowledge they have gained — lives of service to their fellow men.



An Old Religion



Reverend Robert Koenig is well-known to us as pastor of the "college church" and a true friend of Indiana Central.

As a church-related college, Indiana Central maintains an aged perspective of the Christian spirit within a community of faculty and striving students — many losing and yet finding new religious orientations — many seeking new references by which to place newly discovered and yet ageless truths — many losing and yet finding themselves as new creatures — in an old world that seeks new emphasis in its increasing complexities in man's quest for truth.

This sight of the "campus church," the University Heights E. U. B. Church, holds a warm spot in the hearts of all Central students.



With New Emphasis

This year's Religious Emphasis Week was not a "pause to refresh" our faith, but a week to contemplate our commitments in a modern world. Indiana Central experienced a new week in her spiritual growth through the mediums of morning prayer quiet times; chapel worship services; informal afternoon discussions on contemporary philosophy, art, literature, and science; evening worship services, off-campus students' fireside chats; motion picture, "The Major Religions of the World"; informal confab on "Mixed Marriages"; art and book displays; and dormitory confabs.



Dr. Harry DeWire, Religious Emphasis Week guest leader speaking on the theme of "Commitment in the Modern World."

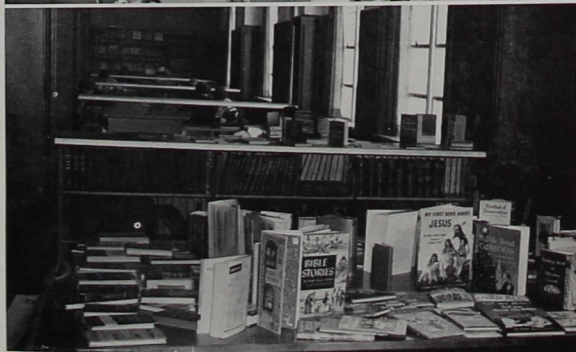


An old scene in the new cupboard — Dick Kidder, Dottie Shortridge and Jim Wentz "confabbing" with Dr. DeWire at the close of Religious Emphasis Week.



Opening Chapel Service of Religious Emphasis Week in the Academic Hall auditorium.

One of the "News" — an exhibit from the 200 books displayed during Religious Emphasis Week.



Homecoming



Homecoming is traditionally a time for celebration and renewal of friendships. Homecoming 1958 was no exception. A grand time was had by students, alumni, and visiting high school pupils as they took part in the festivities. The largest homecoming parade Central has ever had traveled to the center of Indianapolis and back to campus in time for judges to pick first, second, and third prize floats. The dormitories, decorated inside and out, were opened to visitors. A thrilling football game and the crowning of the Homecoming Queen at halftime rounded out the day's activities.

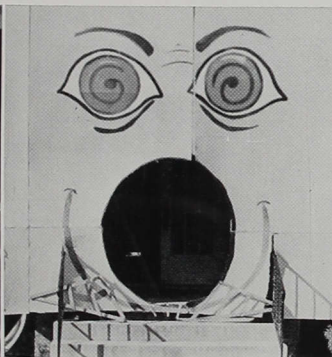
Brenda Brane, a sophomore music major from Warsaw, Indiana, was elected Homecoming Queen by the student body.

The Homecoming Queen and her court: Sherry Easter, senior from Indianapolis and Pat Young, junior of Redkey, Indiana.

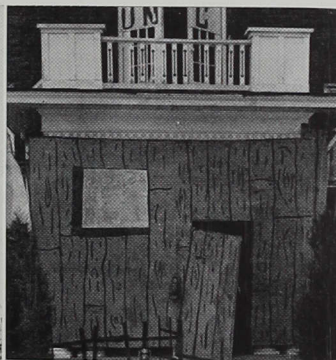




Men's Hall



Wilmore Hall

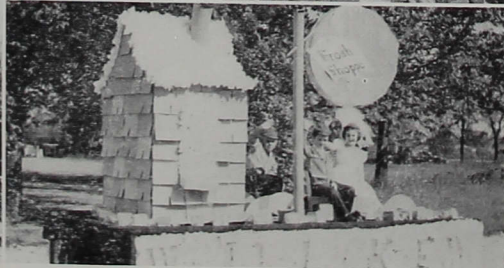


Dailey Hall

Decoration of the residence halls and the building of floats were a big part of Homecoming for all students. These projects were planned by student committees and executed by many willing hands. The long hours of hard work were deemed profitable when the floats and cars formed the parade and when visitors admired the dorm decorations.

Students in native costumes graced the International Relations Club float, while the SCA effort, a huge telephone, proclaimed, "Hold that line."

The smiling skunk of the junior class urged, "Skunk 'Em, 'Hounds," and the freshman "Frosh Shoppe" depicted a trip to Candyland.





May Festival

In the midst of great respect and admiration for the 1957-58 Campus Queen, Amy Buskirk, suspense mounted as the crowd awaited the announcement of the new queen. This event was to be the grand climax of the day's events. The student body had elected and now welcomed the lovely 1958-59 queen, Sherry Easter, to the throne. The sparkling Sherry is from Indianapolis and is active in Sigma Zeta and the Student Education Association. Her attendants were Evelyn Knoop Boring, Marilyn Merritt, Nancy Tiano Ransburg, and Shirley Taylor. The new queen and her court were selected, according to tradition, by the student body from the members of the junior class.

Sherry Easter, the Campus Queen.

"Lady and the Tramp," a merry satiric story narrated by Carolyn Nay had each object from the dogs to the wind impersonated by members of the Physical Education Activities classes.



An outstanding and entertaining event in the spring planned by the Physical Education Department is the annual May Festival. The beautiful Nelson home was the scene of part of the afternoon's events. Here the mothers were greeted by the Campus Queen, Amy Buskirk, and her court at a tea with other senior girls as hostesses. Meanwhile, the fathers challenged their sons in a softball game on the new Indiana Central diamond. Climaxing the day in the evening were the delightful demonstrations of "brain, brawn and beauty" shown by various groups in the gymnasium. Tumbling, square-dancing, rhythmic dances, and the traditional May pole dance were combined in the theme — "My Fair Lady." The gymnasium was decorated in colonial style with a back drop behind the throne, a picture of an Early American mansion, and a white picket fence surrounding the garden where the performers presented their acts to the queen and the audience. Don and Rosalie Armstrong were the co-chairmen of the evening's events.



Evelyn Boring



Marilyn Merritt

Nancy Ransburg

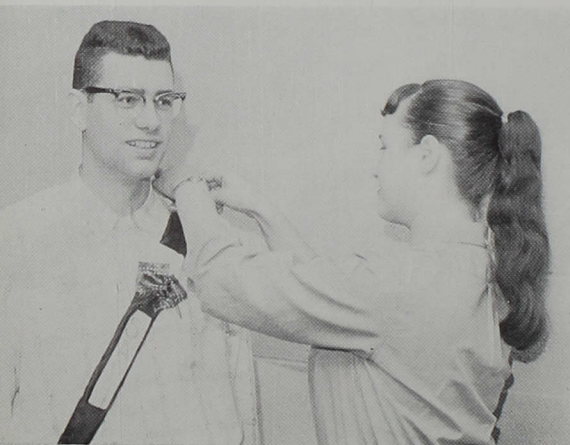
Shirley Taylor



Leap Week

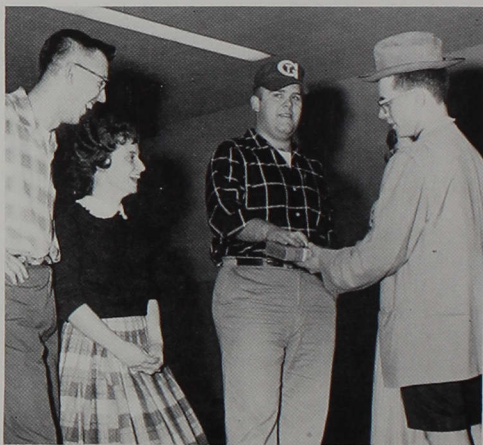
Fellas, beware of the girls' favorite time of the year! Leap Week is the one time when the girls can literally chase the boys. Certain drawbacks

Another red-blooded American bites the dust! It looks as though Rosalie Stanton has "caught" John Cazier.



go with this privilege, however. Girls must pay all date expenses, carry books, open doors, and generally take over the gentlemanly duties.

Marryin' Sam ties the knot at the Sadie Hawkins party.



These yokels were treated to Lil' Abner po'k chops and Kickapoo joy juice at the Dog Patch Dinner.



Poor Raeburn Chansler, having to carry all those books and open the door for Dave Rathbun, too.

Sweetheart banquet

The Columbia Club was this year's site of the long-awaited Sweetheart Banquet. This evening provided the perfect climax for the fun and festivity of Leap Week.

Bonnie Dulaney adjusts Tom Loer's boutonniere as the evening begins.



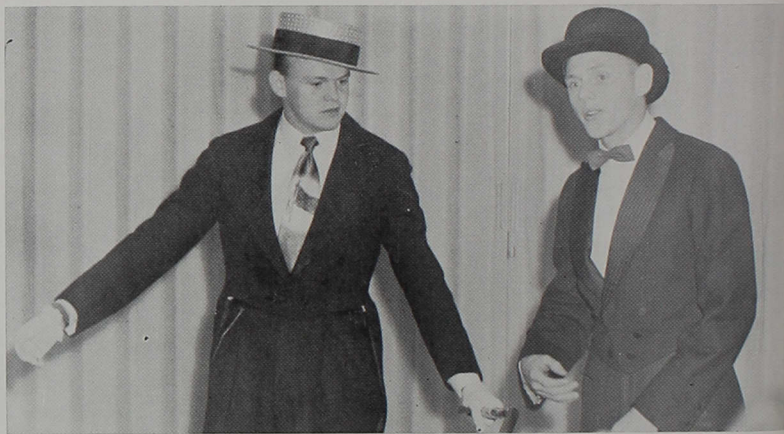
These royal pages helped to carry out the theme of the banquet, "Knight of My Dreams."



A wonderful evening was anticipated by every couple.

Banquets and Parties

The social season at Central begins with the Fall Banquet. Our banquets are not complete without entertainment. Here, Dave Rathbun and Chuck Wise oblige with a comedy routine.



John Thompson presides as master of ceremonies at the Christmas banquet, "Mistletoe Magic." It is easy to see that the guests are having an enjoyable evening.



The International Relations Club sponsored this informal get-together to which they invited, in addition to students and faculty, international personalities residing in Indianapolis. The party was a success and will be an annual affair.





"Jousting or Jestng" returned us to the days of Robin Hood for a slightly unorthodox tournament.

Geneva Stunts

The Geneva Stunts are an annual SCA project to sponsor Indiana Central students at the conference held at Lake Geneva in June. The purpose of this conference is the exchange of ideas among

various collegiate organizations.

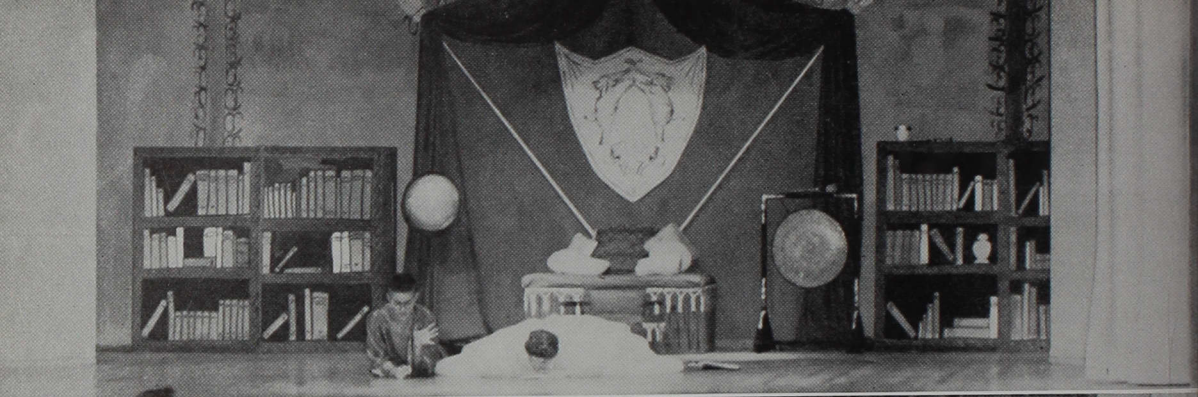
The Stunts, themselves, are written, directed, and acted by students. Student ingenuity also provides sets and music.

Zounds! Cave men and cave women from the past capture two picnickers in "A Day in a Cave."



"Back Door to Heaven" treated us to a look at some rock and roll angels and a lighthearted spoof of the faculty.





Composing a letter to President Lincoln can be quite a task for a British schoolteacher in Siam. Such was the lot of Anna as portrayed by Linda O'Dell. Determined to please His Majesty, Anna managed to write the letter while keeping her head lower than that of the King, Tom McCormick.

Harriet Beecher Stowe's novel of the American Civil War is given the Siamese treatment to become "The Small House of Uncle Thomas." Rancers dressed in brightly colored costumes dramatize the story as it is told in song.

King and I



Indiana Central's first theatrical production this year was Rodgers and Hammerstein's, "The King and I." Before capacity crowds Centralites proved that a small enrollment is no barrier when talent, expert direction, and hard work come together. "The King and I" was directed by Professors Kenneth Kohn and Victor Danek.

The King's "wives" add the final touches to their make-up.



The eighty-six piece Cincinnati Symphony Orchestra, conducted by Max Rudolph, was the first presentation of the series. Mr. Rudolph is pictured at the reception following his performance.

The Don Cossack Chorus and dancers, who have appeared in sixty-five nations, entertained the audience at Central.

Artist Series

The Artist Series featured five of the nation's most outstanding musical, dramatic, and lecture presentations. In addition to those pictured, the Gershwin Musicale was also featured. Following each performance, President Esch gave a reception in his home honoring the guests. Comments from Centralites and our Indianapolis neighbors indicated the great merit of these performances. Indiana Central is happy to have brought this cultural service to the community.

Pictured with President Esch, Catherine Marshall, lecturer and author, made Indiana Central her only midwestern appearance of the season.

The Jamed Barter Theatre of Virginia presented Agatha Christie's hit play, "The Mousetrap."



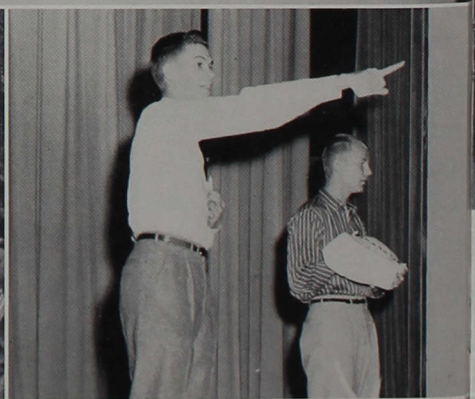
Tradition and

HONORS DAY (top)—The fall Honors Day program is devoted to the recognition of students who have maintained a high scholastic average the previous year.

BROWN COUNTY DAY (bottom left)—Brown County Day is highly anticipated. Each fall students and faculty desert the campus to head toward this state park for a day of hiking, horseback riding, softball, volleyball, or just plain loafing.

W. U. S. AUCTION (middle right)—Larry Bunting and Dave Brittenham auction cakes, candy, cookies, kisses, dinners, and a shoe shine by President Esch for the aid of underprivileged students through the World University Service.

FLAT ROCK RETREAT (bottom right)—Each spring the Student Christian Association holds a retreat at Flat Rock to plan the activities of the ensuing year. Participants can be sure of fun and fellowship at the retreat.



Innovation

TUG OF WAR (top)—The tug of war between freshmen and sophomores at Longacre Park is traditional fall fare. This year a girls' tug was added. The freshmen, by winning both tugs, were allowed to shed their green beanies.

JUNIOR CARNIVAL (bottom left)—Bill Shobe is certainly getting the wrong end of those mud pies; but the money, paid for the privilege of dousing Bill and for other activities at the Junior Carnival, sponsored the Junior-Senior Banquet.

INVITATIONAL ROAD RACE (bottom right)—A big innovation this year was the invitational twenty-one mile road race. In addition to athletes from Central, many out-of-town runners entered the race. Pictured are the queen of the event and her court: Phyllis Wheeler, Bonnie Dulaney, Queen Shirley Taylor, Linda Kirkham, and Etta Lou DeMoss.



Remember when...



... the big welcome planned for President Esch was sidetracked to the parking lot when he was found at home, not at the airport.

... an empty room can look terribly lonely to a girl arriving at Wilmore and what a difference a few homey touches can make.

... Dave Heckler and Diana Bymaster entertained the student body as part of the prize-winning sophomore talent show.

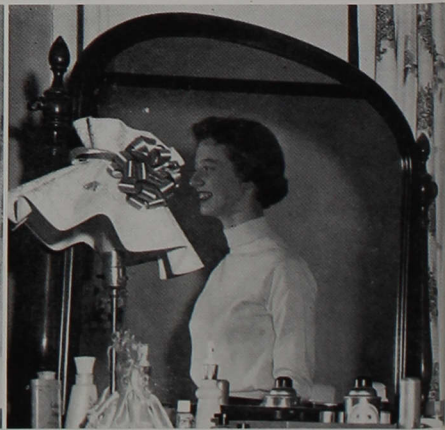
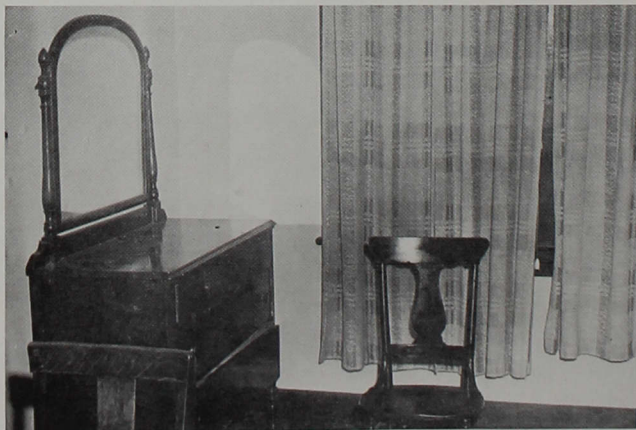
... this was a familiar sight. Students scan the

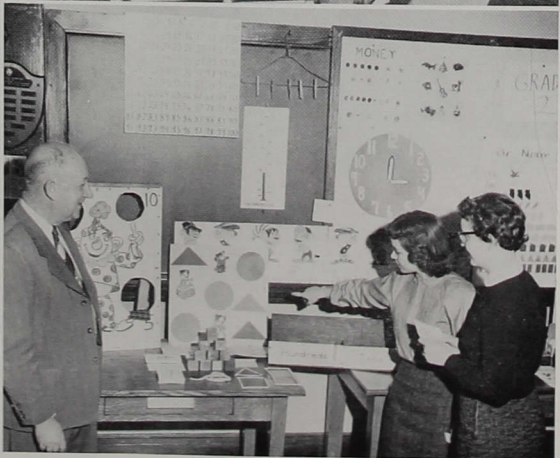
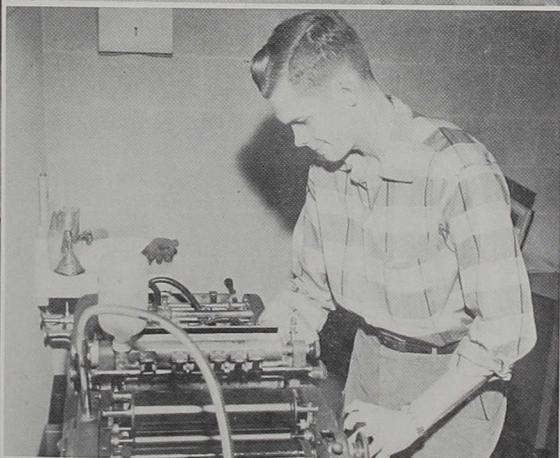
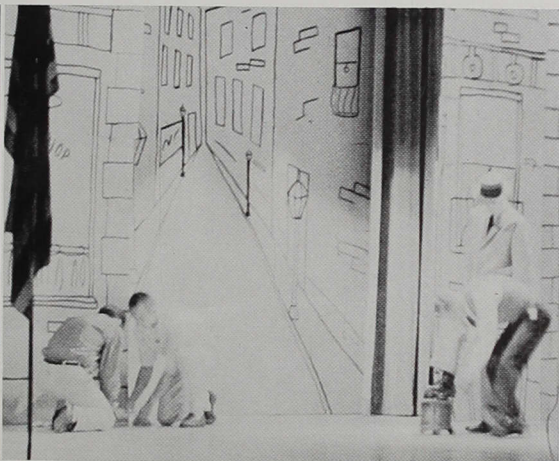
exam schedule for the hours of their finals.

... when the juniors presented a street scene for their show, "On the Street Where We Live."

... Larry Bunting tried to please everyone by printing posters, announcements, and letters from the administration.

... the display of arithmetic devices made by the elementary education majors drew much attention. Etta Lou DeMoss and Hanna Bunner explain the intricacies of one of the devices to Professor Davis.







"O Christmas tree, O Christmas tree . . ."



Sandra Byrum
Editor

The organizations on campus are both new and old, traditional and newly-formed. Whichever the organization may be, it fulfills a need in the student's life for further education, for acceptance of responsibility, for practicing leadership, and for generally putting his education to use. Indiana Central's organizations are purposeful and active, making a contribution to the school and to the well-being of the individual.

Organizations

Theacallosia and Philalethea

Practicing parliamentary procedure, improving literary expression, and gaining poise and self-confidence are the activities in which Theacallosian

and Philalethean women engage. The two literary societies meet on alternating nights twice monthly.

Row 1: Judy Burchard, Donna Shearer, Miss Meier, sponsor; Carolyn France, Carol McComb, Jean Cole.
Row 2: Audrey Porter, Sandra Dale, Helen York, Shirley

Taylor, Gloria Brewer, Etta Lou DeMoss, Carolyn Cates, Carolyn White, Peggy Gibson, Rose Patrick, Alice Faye Johns, Betty Hall.



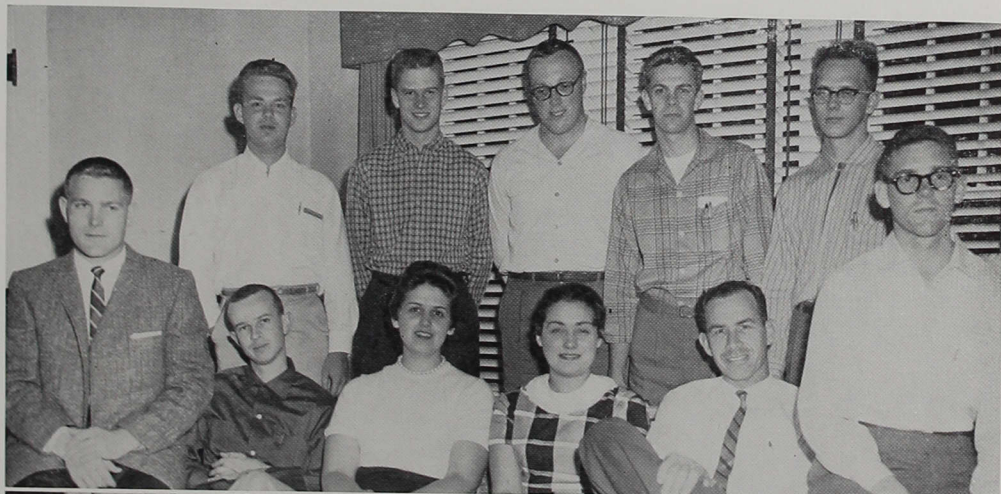
Seated: Miss Weaver, sponsor; Sandra Byrum, Carolyn Bunting. Standing: Marilyn Dykstra, Donna Key, Carolyn Foutch, Grace Maze, Janis Holloway, Sandra Bunnell,

Pauline Milhouse, Arleen Hummel, Sherrill Goeing, Sandra Osborne, Rose Throm, Delane Peterson, Shirley Johnston.

Philosophy Club

The Philosophy Club, a relatively new organization of Central's, provides its members with an opportunity to discuss informally concepts of philosophers and current problems of concern.

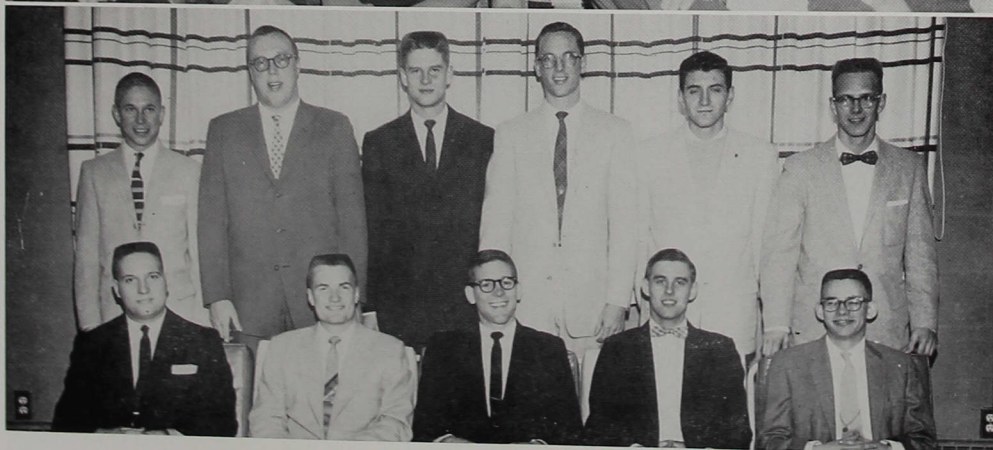
Row 1: Bob Armstrong, Jim Wentz, Carolyn Cates, Marilyn Hawkins, Professor McBride, Bill Howard.



Philomusea

The Philomusean Literary Society is an organization of men interested in improving literary abilities, developing deliberative faculties, and practicing a systematic transaction of business.

Row 2: Dave Young, Gene Lausch, Bob Frey, Larry Bunting, James Dressler.



Row 1: Neal McCarty, Vaun McAhren, Bill Howard, Calvin Brandenburg, Marvin Anderson.

Row 2: Roger Franks, Bob Frey, Gene Lausch, David Maish, Ivan Kellogg, James Dressler.



Sociology Club

The Sociology Club, newly organized this year, seeks to introduce more people to the field of social work and to widen the understanding of people already acquainted with that area. The organization this year has taken field trips to court, social centers, and various kinds of homes — thus enriching subject matter studied in the classroom.

Row 1: Dorothy Shortridge, secretary-treasurer; Janis Holloway, Arleen Hummel, Betty Logan. Row 2: Donna Key, Jim Dressler, Jack Smith, Bob Frey, Loren Thomas, Dottie Lester, Carolyn France, Professor Henricks, sponsor. Not pictured is Pete Heller, president.

English Club

The English Club seeks to stimulate and promote interest in written expression and in literature. The organization sponsors the publication, *Campus Originals*, which includes the best work of students in the English composition classes. Membership includes all students interested in the field of English.

Row 1: Mrs. Marshall, Miss Weaver, Sarah Repp, secretary; Audrey Porter, president; Phyllis Wheeler, Don Davis, vice-president; Miss Cravens. Row 2: Mrs. Fouts, Mrs. Keller, Ruby Merkel, Rose McCombs, Gloria Brewer, Bob Farmar. Row 3: Mary Watkins, Ronald Dice, Beverly Simon, program chairman; Carolyn France, Linda Kirkham, Dr. Kellogg. Not pictured is Dorothea Dowling, treasurer.



Alpha Psi Omega

Alpha Psi Omega, a national honor dramatics fraternity, exists for the purpose of stimulating interest in dramatic activities at I. C. C. Membership is limited to those students who have accumulated a minimum number of points by participating in dramatic productions.

This year the organization revised its constitution, forming an associate organization of students who have earned points by working in productions but who do not have the required number of points for admission. The associate members supply committee chairmen and directors for the dramatic productions.

Professor Kohn, sponsor; Sarah Repp, president; Margaret Frazier, secretary; Carolyn France, treasurer; and Mary Watkins, president of Alpha Psi Associates, experiment with the new lighting control board.



In this scene from "A Certain Star," the rich merchant, Ed Moore, finds himself in a household of thieves.

Phil Isgrigg as Joe Blake protects his home from the threats of neighbors on Sycamore Street.

Frank Morrison (Bill Baldwin) orders his son (Mark Bitzer) from the table in "Thunder on Sycamore Street."





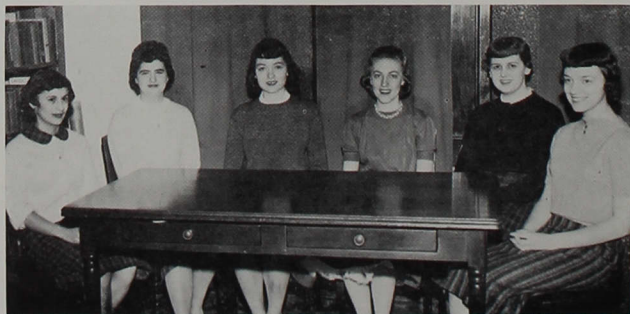
Row 1: Audrey Porter, Peggy Gibson, Etta Lou DeMoss, Pat Lipp, Norma Barnett, Linda Kirkham, Sandra Byrum, Suzette Bennington, Sandra Dale. Row 2: Judy Burchard, Don Davis, Marilyn Merritt, Suzanne Clark, Carolyn France, Arlene Overholtz, Marilyn Johnson, Ruby Merkel, Sarah

Repp, Novadean Ridenour. Row 3: Professor Davis, Wanda Ruckle, Harold Beasley, Bill Wheeler, Marshall Goss, Orrin Sarles, Russell Kistler, John Young, Larry Andrews, Dr. Merkel.

S. E. A.

The Student Education Association, Central's organization for future teachers, is affiliated with NEA and ISTA. Members enjoyed several interesting programs this year, including hearing the football coach of Southport High School and seeing

slides of Professor Davis' European summer tour. Some of the members ushered for the Teacher's Institute held for the first time in the new Indianapolis ISTA building.



Anna Jensen, S. C. representative; Pat Lipp, secretary; Norma Barnett, president; Helen York, vice-president; Carolyn Cates, treasurer; Linda Kirkham, reporter.

Margaret Frazier, Roberta Hart, Sherry Clodfelder, secretary; Jacquelyn Scholfield, Suzanne Clark, president; Rosalie Schabacker, Sandra Wright, Gladys Ikerd, Mary Watkins, vice-president; Fran Miller, Melvyn Davis, Miss Huey, sponsor. Not pictured is Hattie Kruger, S. C. representative.



Vesta Club

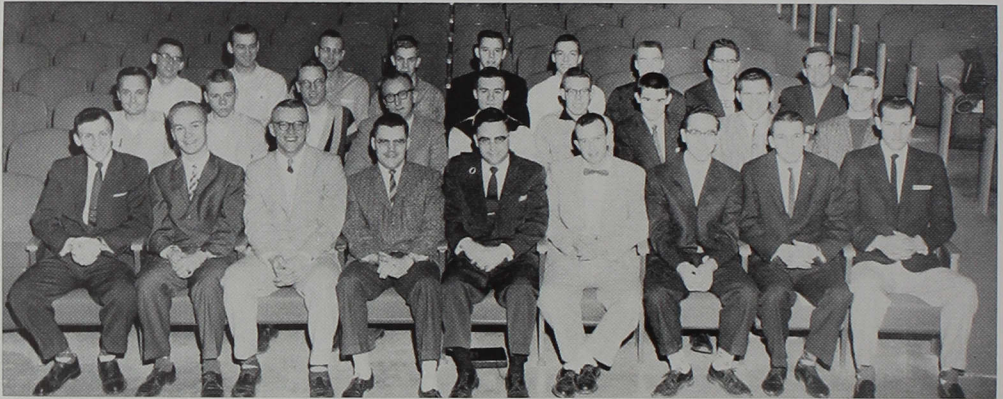
Vesta, a campus organization for young women interested in the art of homemaking, is affiliated with both state and national associations. Activities of Vesta include money raising projects, an annual field trip to the Indianapolis Home Show, and visits to AHEA and IHEA meetings.

Art Club

The Art Club, organized chiefly for art majors and minors, as its special project this year, visited art museums and exhibitions in New York City with money earned through sandwich and pizza sales. Art Club members hope to more fully understand and appreciate great works of art.

Row 1: Julie Kistler, Jean Potts, Linda Horner, treasurer; Rita Evans, president; Mary Ann Norris, Frances Groves, secretary; Roberta Hart. Row 2: Professor Boyce, Dale Mace, Dewey Balsley, Richard Shearer, vice-president; Dane Ashcraft, Joe Reynolds.





Row 1: Roger Crosier, Larry Miller, Bob Coake, Harold Trump, James Grimes, Jim Wentz, Tyron Inbody, Larry Hess, Eldon Brown. Row 2: Phil Isgrigg, president; Bill Schultz, David Maish, treasurer; Reverend Smith, sponsor; Lewis Wheat, Larry Andrews, Harold Hubbert, Dick Padrick, Calvin Brandenburg. Row 3: Marvin Anderson, sec-

retary; Alan Cochran, Ed Crause, Larry Bunting, Terry Moore, Jerry Adams, Vaun McAhren, Larry Rood, Harold Bramlett. Not pictured are Jim Dressler, vice-president; Ivan Kellogg, S. C. representative; and Reverend Deem, sponsor.

C. M. A.

The Central Ministerial Association offers for pre-theological students insight into their future ministerial duties along with practical experience in Christian leadership.

Row 1: Miss Meier, sponsor; Shirley Wilmoth, secretary; Dorothea Dowling, Jean Potts, Robert Farmar, Ingrid Henkels, Professor Underwood, sponsor. Row 2: Don Davis, Phil Isgrigg, Virgil Keefer, president; Vaun Mc-

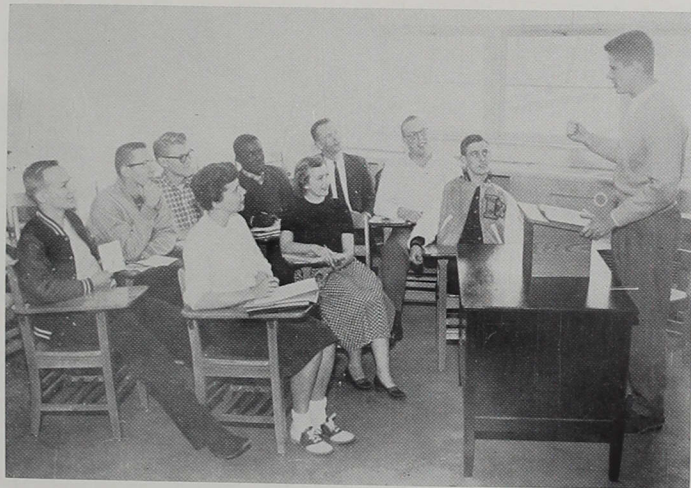
Pan Linguists

Pan Linguist is an organization which encourages improvement of oral and written expression of foreign languages through dramatizations concerning the customs and literature of people of different lands. The organization is open to all who are interested in linguistics.

Ahren, treasurer; Marlin Cline, Ronald Dice, David Hash, Marilyn Hawkins, vice-president. Not pictured are Sharon Edwards, song leader, and Willie Hong, S. C. representative.



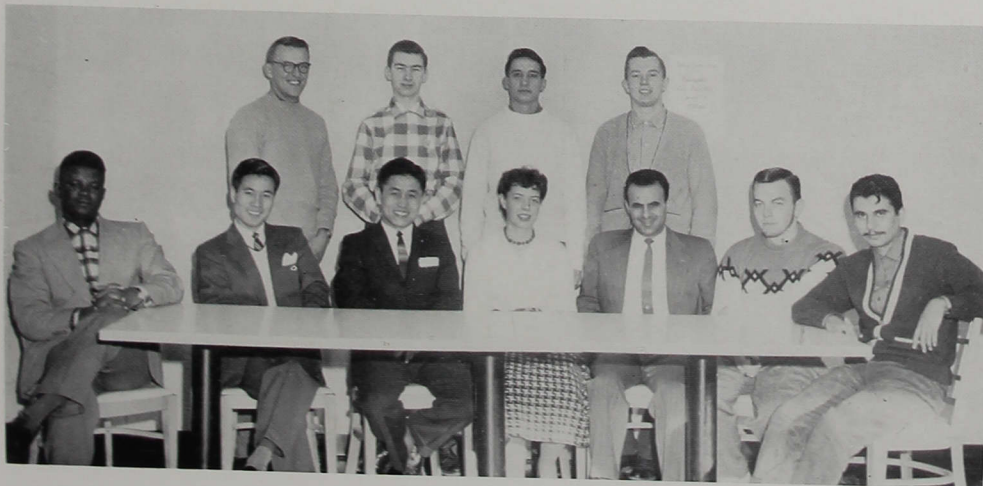
Speaking: Gene Lausch, captain; Row 1: Dottie Lester, Frances Reger, Calvin Brandenburg. Row 2: Larry Miller, Dan Motto, Bill Baldwin, Bob Farmer, Professor Kohn, sponsor; Bob Frey.



Debate Club

"Resolved: That the further development to nuclear weapons be prohibited by international agreement" was the topic under discussion by the Debate Club members during this season. The debaters participated in approximately eight tournaments and in several exhibitions, including two Chapel performances before the student body.

Row 1: George Goba, Jae Kunk Chung, Jung Hi Kim, Carolyn Bunting, secretary; Rauf Yacu, vice-president; Virgil Keefer, Parviz Varjavand.



International Relations

The International Relations Club seeks to promote among the student body an interest in international affairs and a better understanding between the student body and the international students as well as among the international students themselves.

Row 2: Bob Coake, Franklin Young, Marlin Cline, Jim Bruce. Not pictured are Byung Doo Hong, president, and Madeline Linton, treasurer.

Business Club

This organization provides business majors and minors with various opportunities to discuss with businessmen the problems which will arise as they step into the business world.

Row 1: Marilyn Dykstra, Margaret Springer, Charles Underwood, Larry Binnie, Sarah Senour, Darlene Emmons, Roger Hoppes, president; Jae Kuck Chung, Beverly Plummer, Linda McCullough, Linda Kirkham, treasurer; Janice Biggs, Rauf Yacu, Jung Hi Kim. Row 2: Barbara Carrico, S. C. representative; Reba Boyd, Jane McIntire, Evelyn

S. A. M.

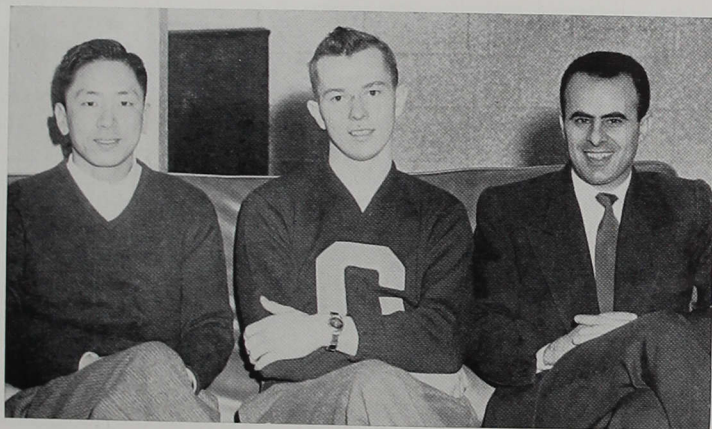
Society for Advancement of Management allows those interested in business administration to learn of opportunities within that field.

Boring, secretary; Shirley Taylor, John Cazier, William Moeller, Shirley Johnston, Gladys Ikerd. Row 3: Herman Halcomb, Bob Kaczorowski, Ken Hottell, Wayne Gossman, Joe Gossman, Ivan Nading, Gene Perkins, Fred Rossmanith, Thomas Hartsock, Lee Van Jelgerhuis, Professor Lawrence, sponsor. Not pictured is Bob Federspill, vice-president.



Row 1: Mr. McGuff, John Howland, treasurer; Bill Yarbrough, vice-president; Herman Halcomb, president; Sandra Wright, secretary; Lee Van Jelgerhuis, Professor Lawrence, sponsor. Row 2: Charles Gerdt, Tom Hartsock, Jerry

Thurston, Gerald Nay, Jae Kuck Chung, Rauf Yacu, Helen Caine, Roger Hoppes, Larry Binnie, Tommy Kazandzos, Danny George, Ivan Nading, William Moeller, Fred Rossmanith, Dennis Smith.



Byung Doo Hong, secretary-treasurer; Jim Bruce, president; Raul Yacu. Not pictured is Jim Wilbur, vice-president.

A. P. O.

Former Boy Scouts, wishing to continue in scouting by performing projects to aid both school and community, may join Alpha Phi Omega, a national service organization. Sponsoring campus

tours during orientation week and handling registration and parking for Homecoming Day are annual A.P.O. projects.

I. A. Y.

Service is the only word needed to describe the organization known as I.A.Y., for its members willingly perform duties for their college and provide programs for various social centers. I.A.Y. seeks to develop friendship, character, and cultural appreciation, realizing the importance of these factors in world service.

Row 1: Sandra Byrum, recording secretary; Phyllis Wheeler, Rose Patrick, Alice Faye Johns, Janis Holloway. Row 2: Lila Leedy, Karen Easley, Peggy Gibson, Carolyn France, Raeburn Chansler, Arlene Buskirk, Miss Huey. Row 3: Arleen Hummel, Pauline Milhouse, chaplain; Audrey Porter, vice-president; Evelyn Boring, president; Shirley Taylor, Delane Peterson, Carolyn Bunting. Not pictured are Sarah Repp, corresponding secretary; Sandra Dale, treasurer; and Miss Williams, sponsor.





Row 1: Jim Wilbur, Al Morgan, Dave Curts, Dale Harner, George Fallowfield, Fred Thayer, Dale Mace, Charles Dorell, Hager St. Clair, Bill Yarbrough. Row 2: Jim Bruce, Lou Hurtle, vice-president; Curtis Speer, Jack McKinney, treasurer; Marshall Goss, Don Bisesi, Bob Otolski, Bob Vuillemot, president; Larry Cox, George Marshall. Row 3: Gerald England, Leland Dilk, Henry Easter, Mickie Powell, Don Felten, Bill Shobe, Ed Moore, Gene Austin, Joe DeHart,

Shannon Jones. Row 4: Wiley McCullough, Tom Hartsock, Kenny Buntin, Dan Welliever, Don Poole, Vaun McAhren, Loren Thomas, Mike Jackson, Stanley Brewer, Larry Fine. Row 5: Jim Ashcraft, Tom Springer, secretary; Carol Purichia, Chuck Hedges, Willie Martin, Bob Laskowski, John Merriott, Tom Welch, Gilbert Walter, Mr. Windell, sponsor. Row 6: Phil Nonweiler, Ray Howard.

"C" Association

The "C" Association includes those who have received the varsity "C" in any of Central's intercollegiate sports.

Annually the lettermen select five Homecoming Queen candidates, sponsor men's inter-class tournaments, and sell refreshments at athletic events.

Booster Club

The Booster Club, striving to become an active organization again, seeks to promote student enthusiasm for the varsity games and student loyalty to the college. One of its projects in the past was the raising of funds for sweaters for senior varsity men.



Ed Moore and Shannon Jones make plans to reorganize the Booster Club. Not pictured is Jim Wiley who is helping in the reorganization.



Row 1: Judy Waggoner, Alice Eversole, Betty Logan, Doris Garriott, Rose Thom. Row 2: Miss Day, coach; Elsie Wulf, Evelyn Boring, Arlene Buskirk, June VanWagner, Betty Coleman and Judy Haas, score keepers.

Whippets

The Whippets compiled a 5-5 record during the 1958-59 season. Seniors June VanWagner, Evelyn Boring and Nancy Ransburg, received "C" blankets for four years participation. Elsie Wulf and Judy Waggoner, sophomores, received award sweaters for two years' activity.

Season's Record

Indiana Central.....32	Taylor44
Indiana Central.....32	Anderson45
Indiana Central.....44	Franklin38
Indiana Central.....49	Marian28
Indiana Central.....28	St. Vincents38
Indiana Central.....20	Hanover16
Indiana Central.....35	Taylor34
Indiana Central.....31	Franklin33
Indiana Central.....26	Anderson21
Indiana Central.....19	Hanover (overtime) 20

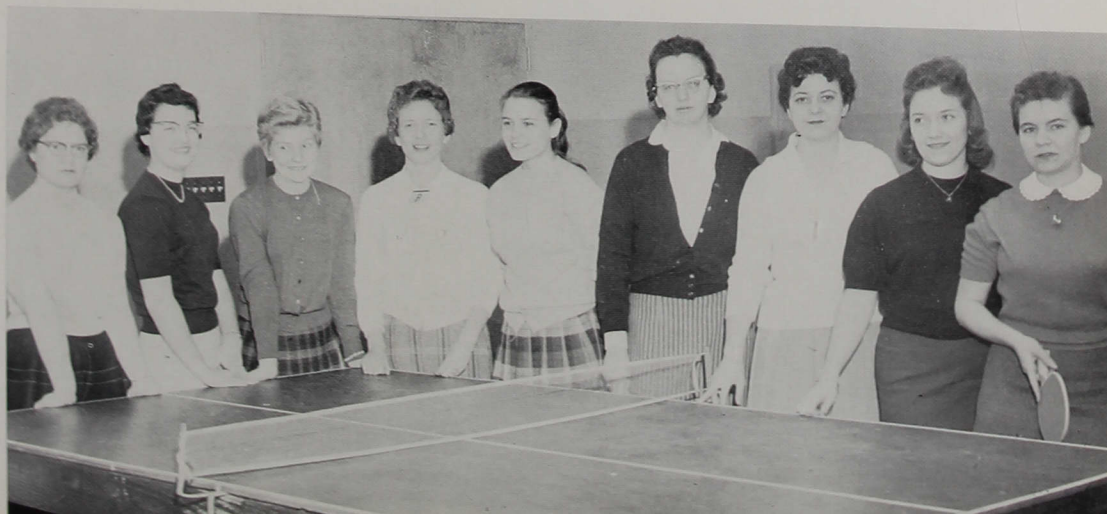
W. R. A.

The Women's Recreation Association sponsors a yearly program of extra-curricular activities for Indiana Central women. The organization sells concessions at athletic events and joins the "C"

Association in buying a gift for the Campus Queen. This year the group sponsored an inter-class basketball tournament among women students.

Doris Garriott, Sherry Clodfelder, Judy Waggoner, secretary; Barbara Carrico, publicity chairman; Doreen St. Clair, vice-president; Sally Gaddie, Carolyn Nay, president;

Bette Gray, Betty Logan. Not pictured is Suzanne Clark, treasurer.





Row 1: Shirley Taylor, Linda Kirkham, Ron Howard, Bill Shannon. Row 2: Sarah Repp, Ron Benz, Dave Britten-

ham, Peggy Gibson, Carolyn France. Row 3: Ed Moore, Phyllis Wheeler, Don Davis, Barbara Carrico, Larry Hess.

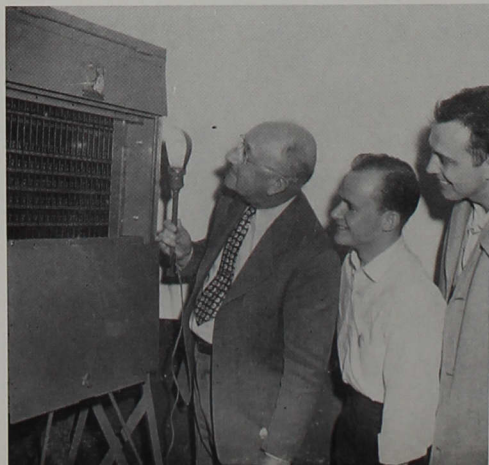
Student Council

Student Council, the governing and disciplining organization on campus, exists for the purpose of helping the student body to help itself, permitting a closer communication among students, faculty members, and administrators. The Council, composed of representatives from each class, organiza-

tion, and dormitory, is open to suggestions and requests from the general student body. The organization this year equipped the recreation room, and during chapel sessions successfully cleared up various controversial issues.

Professor Davis, John Todd, president '57, and Bill Shannon check the count on a voting machine used for the first time during the 1958-59 S.C. election.

Row 1: Linda Kirkham, girl-at-large; Shirley Taylor, secretary-treasurer. Row 2: Dr. Underwood and Professor Pie-meier, sponsors; Bill Shannon, president; Ron Howard, vice-president. Not pictured is Tom McCormick, boy-at-large.





Row 1: Judy Burchard, religious life; Linda Showalter, freshmen orientation. Row 2: Jim Wentz, religious life; Carol McComb, Geneva stunts. Row 3: Phil Klinger and

Marilyn Merritt, social. Row 4: Howard Brown and Marilyn Dykstra, W. U. S. Not pictured are Carolyn Cates and Gordon Goss, banquet.

S. C. A.

The Student Christian Association, being the one activity to which all Centralites automatically belong, is the largest organization on campus. The SCA, striving for religious and social fellowship and for the broadening of horizons of thinking applicable to a Christian way of life, plans and sponsors programs and workshops. Flatrock Retreat, W. U. S. auction, Geneva Stunts, various banquets, and Religious Emphasis Week are annual events at Central because of the work of the S.C.A.

Gene Lausch, president; John Thompson, 1st vice-president; Carolyn Bunting, 2nd vice-president; Ron Benz, assistant treasurer; Bill Howard, treasurer. Not pictured is Sandra Dale, secretary.





Row 1: Linda Showalter, organization editor; Nancy Ransburg, science editor; Carolyn France, humanities editor; Phil Klinger, religion editor; Bob Frey, Jack Miller, Calvin Brandenburg. Row 2: Dave Young, Diana Bymaster, Linda Horner, cartoonist; Arlyse Montgomery, business and cir-

culatation; Peggy Gibson, Lorene Schini, Shirley Wilmoth, Joyce Plummer, Don Davis, Phyllis Wheeler. Row 3: Jim Bruce, photographer; Pauline Milhouse, Judy Burchard, Shirley Johnston, Rose Patrick, Dottie Lester.

Reflector

A word of thanks goes to the 1958-59 *Reflector* staff for improving Indiana Central's medium of communication over that of years past. Hard work, a cooperative spirit, and able editorship made possible a publication worthy of tribute.

Phyllis Wheeler, Assistant editor, and *Dave Young*, Editor-in-Chief. Not pictured is *Norman Chaney*, Associate editor.



Campus News and Views

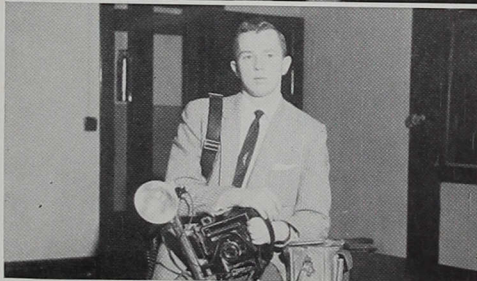
Announcements, meetings, chapel programs — keep up to date on all campus activities by reading your *Campus News and Views*. This miniature periodical, distributed to students every week, originated last year and has proven useful to Centralites in planning weekly schedules.

At left, preparing the next week's publication, are co-editors Sandra Wright and Judy Burchard. Not pictured is Carolyn Bunting who helped with the paper during the first semester.





Sarah Repp, Editor-in-Chief; Etta Lou DeMoss, Associate editor; Raeburn Chansler, Assistant editor.



A sincere "thank you!" goes to Herman Halcomb and Jim Bruce, our photographers.

The Oracle

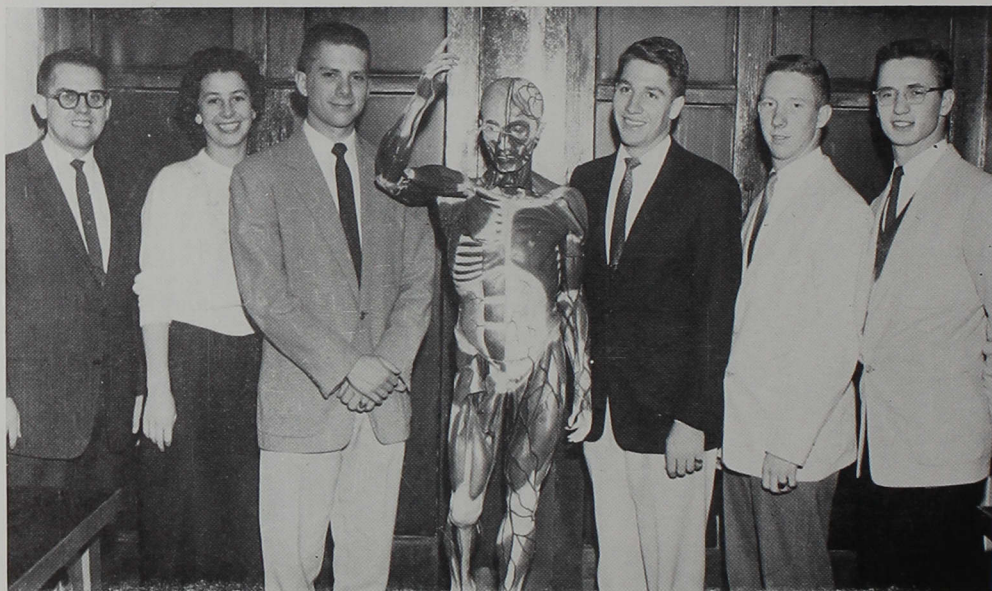
Although the click of cameras is the only outward sign that the *Oracle* is taking shape, the staff knows that long hours of planning, writing, typing, and sizing go to make the finished product. This *Oracle*

is the result of the creative effort of many people and is presented to the student body by the 1959 junior class.

Row 1: Judy Burchard, class editor; Raeburn Chansler, Sarah Repp, Sandra Byrum, organizations editor; Carolyn France. Row 2: Gordon Montgomery, Ronald Benz, Edna Garrison, Karen Easley, Don Davis, Wanda Rucker. Row 3:

Jim Bruce and Herman Halcomb, photographers; Beverly Simon, copy editor; Joe Lowry, sports editor; Richard Shearer, artist; Orrin Sarles, Marilyn Krohne, typist; Russell Kistler.





Dr. Zimmerman, Nancy Ransburg, vice-president; John Thompson, secretary-treasurer; Ronald Benz, Bill Wheeler,

Charles Schuman. Not pictured are Don Tobias, president, and Dr. Morgan, sponsor.

Sigma Zeta

Sigma Zeta, a national honorary science fraternity, encourages the study of science and recognizes the attainment of high scholarship among those students fitted for membership in the society. A

student is required to have at least a "B" in ten hours of science courses before joining the organization.

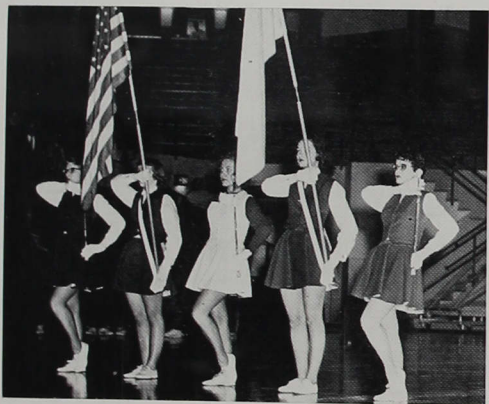
Phi Alpha Epsilon

Phi Alpha Epsilon, the freshman honorary society, includes those students having a scholarship index of at least 2.250 after completion of their first year.

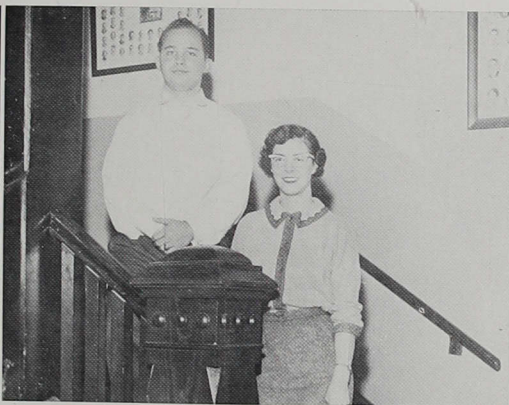
These students are challenged not only to maintain this high average throughout the remaining college years but also to contribute their best to society upon graduation.



Seated: Diana Bymaster, Phyllis Wheeler. Standing: Laverne DuBois, Richard Carlson, Raeburn Chansler, Lewis Wheat, Linda Showalter, Ingrid Henkels.



Central's majorettes: (left to right) Mary Huffman, Fran Miller, Helen York, Norma Barnett, Darlene Emmons.



Dale Peyton, vice-president, and Rita Evans, secretary-treasurer. Not pictured is Richard Carlson, president.

Band

Central's band is one of the most active organizations on the campus. Playing at football and basketball games, at pep sessions, and at evening performances all comprise a part of the band's busy schedule.

Some band members serve double-duty by join-

ing students from other schools and people in the community in playing with the Indianapolis Civic Orchestra.

Working closely with the band are the twirlers who present many an interesting half-time performance on the football field and basketball floor.

Row 1: Marilyn Hicks, Rose Throm, Rosalie Stanton, Janet Shafer, Rita Evans, Frances Reger, Mary Ann Norris. Row 2: Anna Beeler, Harold Baumer, Lucy Hague, Alice Eversole, Ed Lindley, James Clardy, Charles Benedict, Jerry

Achor, Dale Peyton, Phil Zent, John Thompson. Row 3: Doris Garriott, Dick Carlson. Standing: Mr. Slezak, director; Ed Huffman, Alfred Parker.





Row 1: Janet Shafer, Carolyn Amos, Lucy Hague. Row 2: Judy McClure, Joy Cotner. Row 3: Marilyn Johnson, Marilyn Seitz, Edna Garrison. Row 4: Martha Turner, Waneta Wertz. Row 5: Diana Bymaster, Helen York, Pat Beals. Row 6: Janey McSherry, Naomi Shierling. Row 7: Myles Eley, Marvin Anderson, Ken Myers, Barbara Berkshire, Janice Stone, Bonnie Dulaney, Phil Isgrigg, Robert

Welling, Dave Heckert. Row 8: Larry Bunting, Dewey Balsley, Lyle Scifres, Bill Kietzer, Miriam Targgart, Joyce Plummer, Tom McCormick, Eldon Brown, Dick Snellenberger, Dale Peyton. Row 9: Hanna Bunner, Sherrill Goeing, Mary Tarvin. Row 10: Karen Easley, Mary Shierling. Row 11: Arlysse Montgomery, Virginia Valiska, Carolyn Bunting. Row 12: Norma Barnett, Carolyn Cates.

Choir

The activities of the Choir contribute greatly to life at Central. In conjunction with the dramatics department and Indianapolis Civic Orchestra members of the Choir took part in *The King and I*. During Christmas-tide the Choir once again sang carols on the Circle and at Union Station. At the Fine Arts Festival they presented selections from Haydn. The Choir also sang regularly for Chapel programs and ended their season with a tour, in the Midwest.

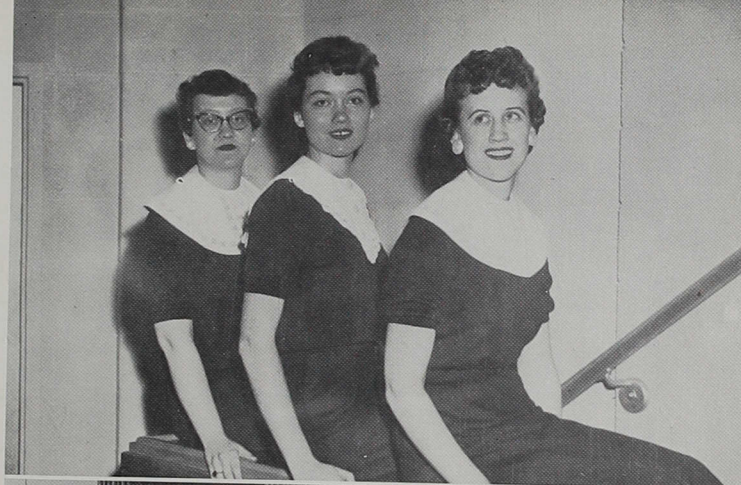
Myles Eley, vice-president; Helen York, president; Larry Bunting, business manager; Naomi Shierling, secretary; Marvin Anderson, S.C. representative.



Girls' Trio

This is a singing trio of which Central can be proud. This three-some, singing at different meetings both at and away from school, has been together since 1956 and will plan to continue as a trio, although two of its members are graduated this June.

Hanna Bunner, Norma Barnett, Janice Stone.



M. E. N. C.

M.E.N.C. offers its members opportunities for professional development and for acquaintance with leaders in the music education profession as well as participation in various music education societies.

Seated: Doris Garriott, Miriam Taggart, treasurer; Marilyn Hicks, Brenda Brane, secretary. Standing, Row 1: Dan Chapell, S.C. representative; Jerry Achor, Dale Peyton, Marilyn Hawkins, Mary Shierling, Janet McSherry, Linda O'Dell, Jacqueline Young. Row 2: Bob Welling, president; Tom McCormick, Richard Carlson, Professor Danek, sponsor. Not pictured is Rita Evans, vice-president.



Centralaires

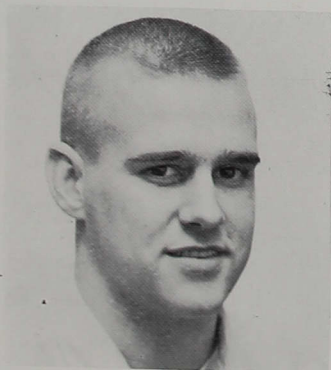
The Centralaires, ICC's choral group, have a busy calendar throughout the year, by entertaining at various meetings, banquets, and conventions on and away from campus. This year the ensemble toured through Illinois.

Diana Bymaster, Bob Welling, He'en York, Howard Boren, Norma Barnett, Tom McCormick, Janice Stone, Larry Bunting, Hanna Bunner.





" . . . to the victor belong the spoils . . . "



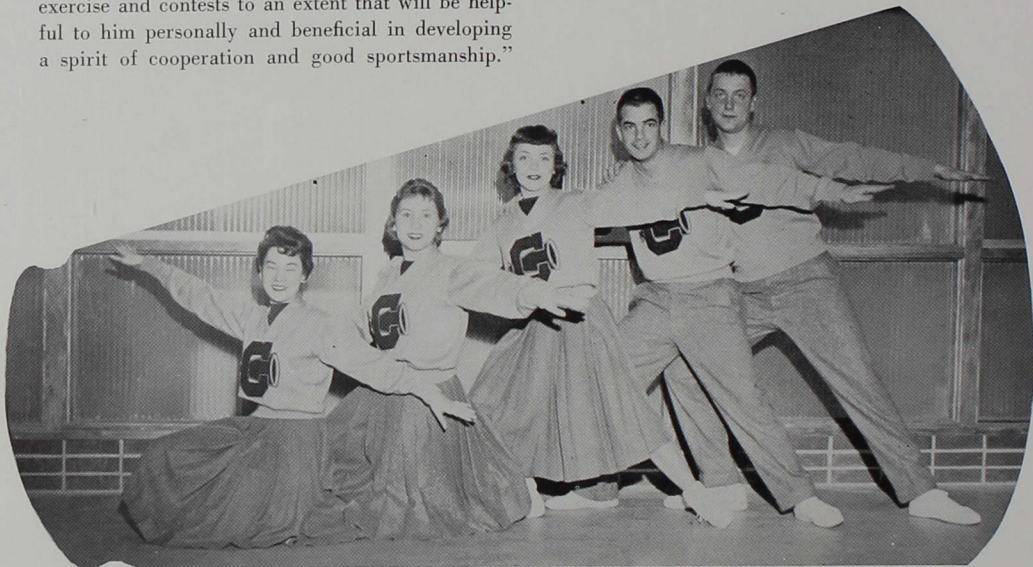
Joe Lowry
Editor

The tradition of college sports is old, but each contest is new, challenging, stimulating. Indiana Central's sports program is well-rounded, giving students opportunity for participation in inter-collegiate games or a comprehensive intramural program.

Sports

This Year in Sports

"Indiana Central College recognizes the educational value of sports and recreational activities and thus maintains a program of intramural and inter-collegiate athletics that is designed to give every student opportunity for participation in physical exercise and contests to an extent that will be helpful to him personally and beneficial in developing a spirit of cooperation and good sportsmanship."



Our cheerleaders: Patty Young, Sharon Doty, Etta Lou DeMoss, Captain Don Davis, and Gordon Goss.



John (Jay) Windell, shown here with his assistant Walt Dininger, this year assumed the position left vacant by the resignation of Jim Wallace, football coach. Mr. Windell is a 1953 graduate of Indiana Central and is doing advanced work at Indiana University. While at Central, he was guard on the 1951 Hoosier Conference basketball team and played halfback in football.

Football

Even though her football team failed to win its share of victories, Indiana Central was no exception to the annual case of football fever. Before the semester opened, Coach Windell and his men were hard at work for the season ahead.

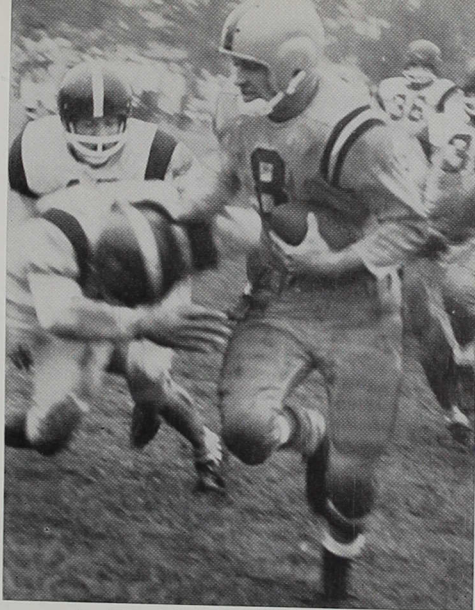
The 'Hounds dropped their first three games to North Central, Alma, and Hanover with scores of 2-6, 0-26, and 0-20 respectively.

From the beginning of the season, the team was plagued with injuries, but they came through with their first touchdown and their first conference win of their fourth try by outscoring Manchester 15-13. season ended with a loss to Valparaiso.

Their winning soon fell short with a decisive loss to Anderson, but returned the following game with a victory over Taylor, only to be stopped by a 19 to 21 loss to their arch rival, Franklin.

In retrospect, the 'Hounds scored 81 points to their opponents' 232. They gained an average of 129 yards per game on the ground and 42.2 yards per game in the air to the 170 and 90.1 yards of their opponents.

Jim Myers, 1958's most valuable player, holds first place in individual ground gaining with a total of 425 yards. George Fallowfield, after a late season's start, managed to win second place



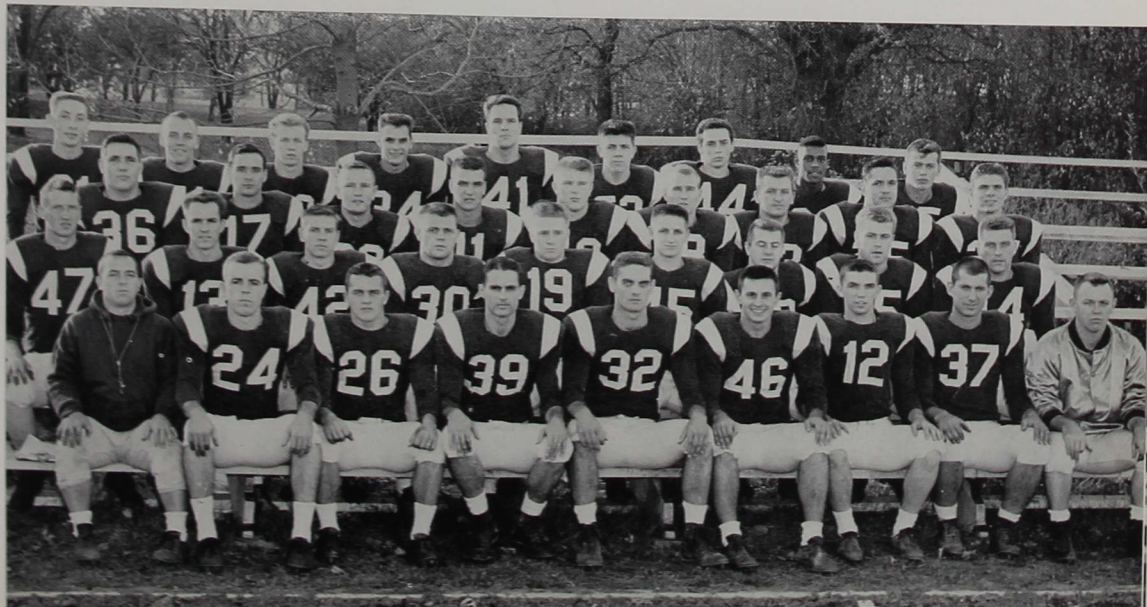
Franklin moves against Central's defense.

with a total of 216 yards. Bob Otolski was leading pass receiver with a total of 8 completions for 71 yards.

Selections for the 1958 all-conference team included Stevens, Dolniak, and Nyers. Stevens and Dolniak shared the honorary captain's position. The team as a whole tied for third place in the conference.

Row 1: Coach Windell, Phil Strader, George Fallowfield, Fred Thayer, Jim Wilbur, Dan Dolniak, Leo Moye, Bill Stevens, Assistant Coach Dininger. Row 2: Phil Acton, John Merriott, Bob Laskowski, Leland Wilk, Tom Welch, Larry Fine, Lou Hurrle, Dick Nyquist, Gerald England.

Row 3: Hank Easter, Joe McGee, Mike Maguire, Carol Purichia, Mike Jackson, Artie Shaw, Ron Rucker, Jim Ashcraft, Bob Otolski. Row 4: John Holmes, Terry Wetherald, Tom Bukowski, Chuck Hedges, Bill Ashcraft, Gilbert Walter, Fred Lander, Willie Martin, Steve Lane.





Season's Record

Indiana Central	2	North Central	6
Indiana Central	0	Alma	26
Indiana Central	0	Hanover	20
Indiana Central	12	Beloit	0
Indiana Central	15	Manchester	13
Indiana Central	7	Anderson	55
Indiana Central	26	Taylor	13
Indiana Central	19	Franklin	21
Indiana Central	0	Valparaiso	78

The slick pigskin gets loose during this mid-air clash.



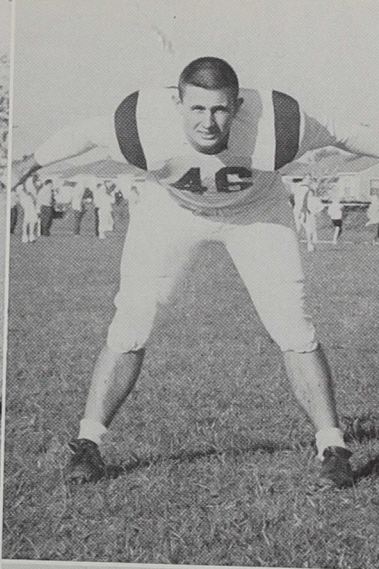
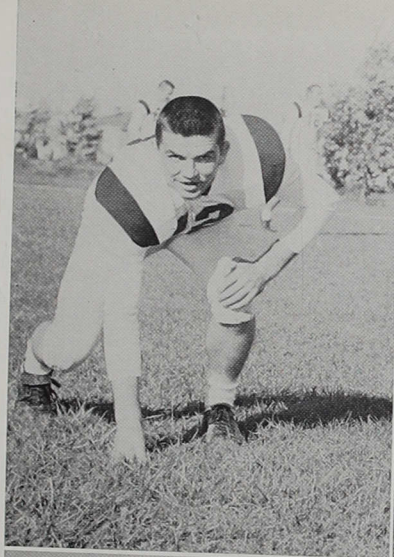
"Little Doc's" bench strength . . .

Two unidentifiable 'Hounds tackle the ball carrier while Stevens gives them support.

Senior Lettermen

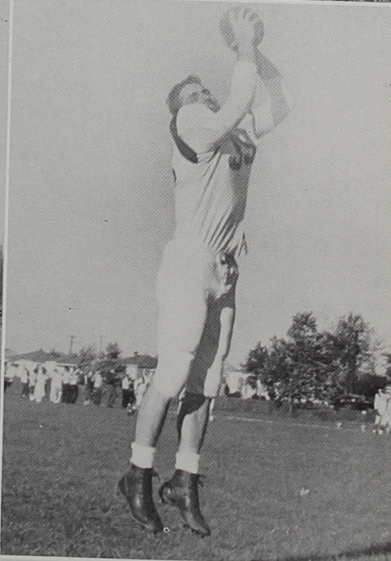
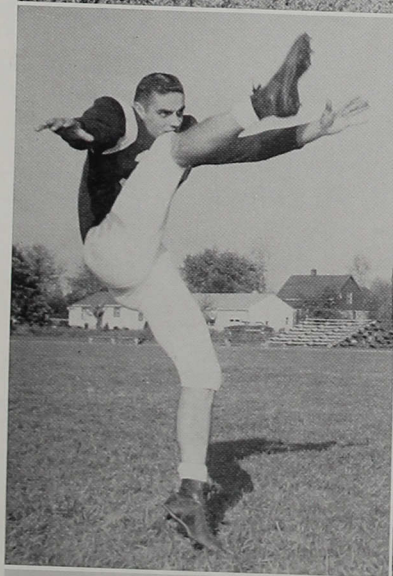
Leo Moyer

Dan Dolniak



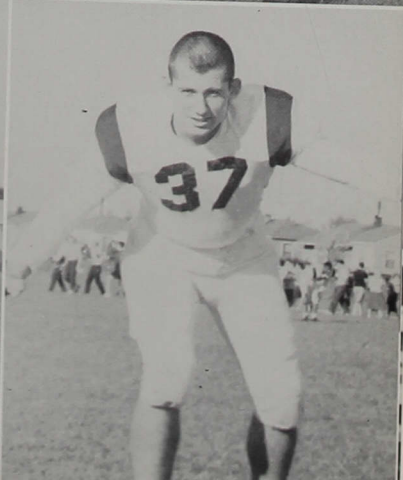
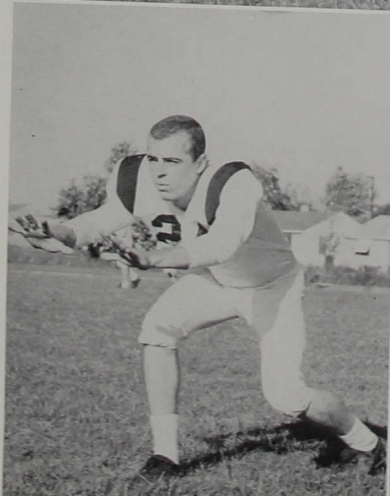
Jim Wilbur

Fred Thayer



Phil Strader

Bill Stevens



Cross Country

The 1958 Greyhound Cross Country team, under the direction of Bill Bright, ended this season by capturing first place in the Hoosier College Conference. Their season's record stands as 6 and 4.

They also placed second in the Earlham Invitational and sixth in the Little State.

Freshman Stan Brewer showed promise of providing veteran material by finishing third in the conference meet. The only Seniors graduating will be Dale Mace and Leon Adnson.

Season's Record

Indiana Central	40	Wabash	16
Indiana Central	23	Hanover	34
Indiana Central	37	DePauw	21
Indiana Central	23	Valparaiso	35
Indiana Central	28	Chicago Illini	29
Indiana Central	33	Indiana State	22
Indiana Central	19	Manchester	39
Indiana Central	21	Anderson	43
Indiana Central	45	Eastern Illinois	18
Indiana Central	19	Taylor	36

Hoosier Conference Champs display their trophies:

Row 1: Bill Shobe, Leon Adnson, Marshall Goss, Loren Thomas, Jim Kiggins. Row 2: Dale Mace, Stan Brewer, Gene Lausch, Stan Arnold, Vaun McAhren.

Row 1: Dale Mace, Loren Thomas, Bill Shobe. Row 2: Stan Arnold, Gene Lausch, Stan Brewer, Marshall Goss, Bill Bright.



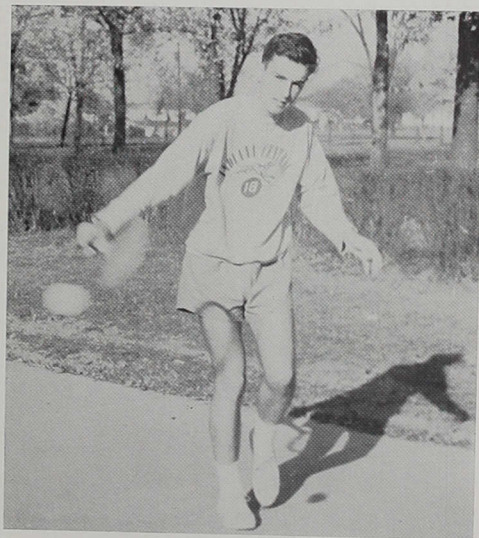
Tennis

Central's 1958 tennis team under Coach McKinney ended their season with one defeat in four matches, giving them second place in the Hoosier College Conference standings. The only loss was to Hanover by a four to three margin.

The only graduation loss will be senior Captain Dale Harner. Returning members Jack McKinney and Jack Tindall have shown the possibility of a first place in next year's conference competition by their undefeated seasons. Others who will return to help them will be sophomores Hugh Jenkins and Jim Tindall and freshmen Ted Koch and Phil Nonweiler.

Season's Record

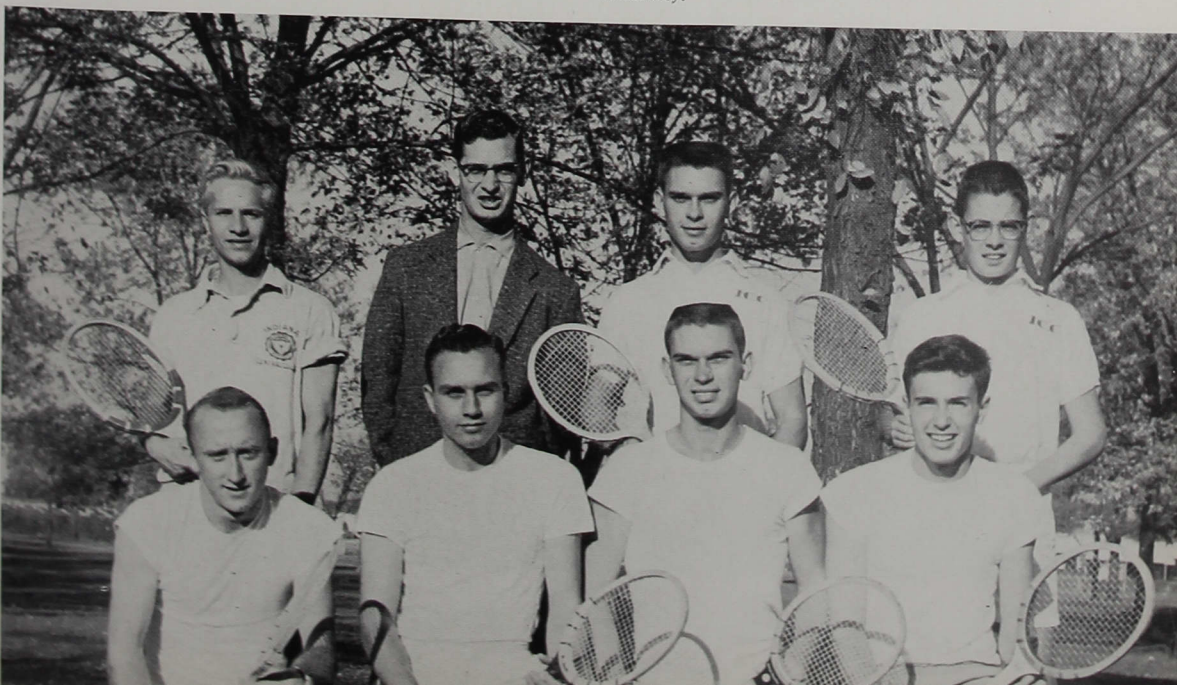
Indiana Central	3	Hanover	4
Indiana Central	4	Manchester	3
Indiana Central	5	Taylor	2
Indiana Central	7	Anderson	0



Phil Nonweiler shows his form during a workout.

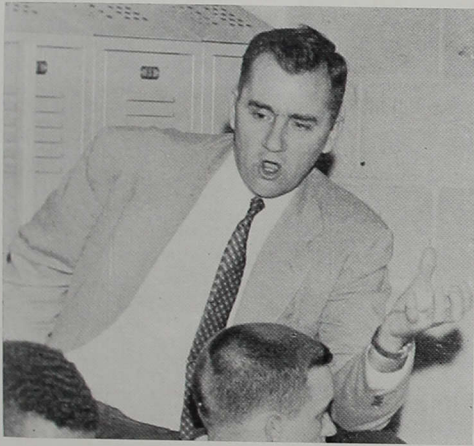
Row 1: Hugh Jenkins, Dale Harner, Jim Tindall, Phil Nonweiler.

Row 2: Ted Koch, Coach McKinney, Jack Tindall, Jack McKinney.





Wilbur, Boyd, and Lewis rebound against the Milligan Buffs.



Coach Nicoson gives the team some halftime advice.

Basketball

Nic's young and rebuilt team was paced to another winning season by sophomore Mickey Shircliff. Shircliff held first place with a total of 281 points for a 11.7 average per game. Senior George Marshall held second place with a 248 point total and a 10.3 average. Other underclassmen who rate recognition are Charles Spurgeon with his 230 point contribution and Jerry Lewis with a 231 point total. Besides holding third place for average points, Jerry led the nation in free throw percentages. Jerry made 75 of 80 attempts to win this top honor.

The season record stands at 14 wins and 8 losses and a 5 and 5 conference record which captured the number three berth in the conference standings.

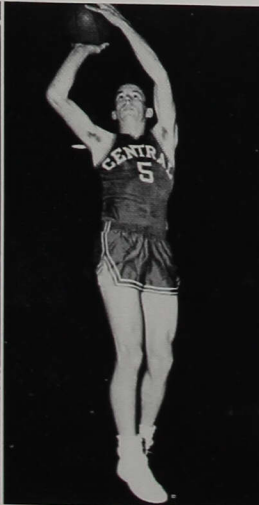
Pointwise, the 'Hounds scored 1824 points for a 76.0 game average to their opponents' 1732 points and 72.2 average.

The greatest wining streak was for eight games that started with a victory over Bellarmine and ended by a 3 point loss to Taylor.

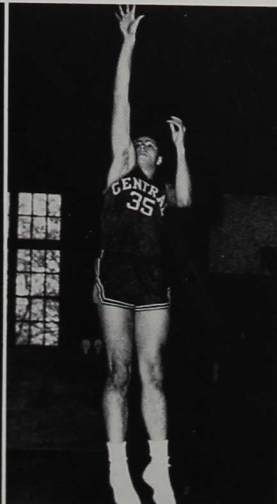
The team will lose seniors Marshall and Wilbur by graduation.



Harold Boyd



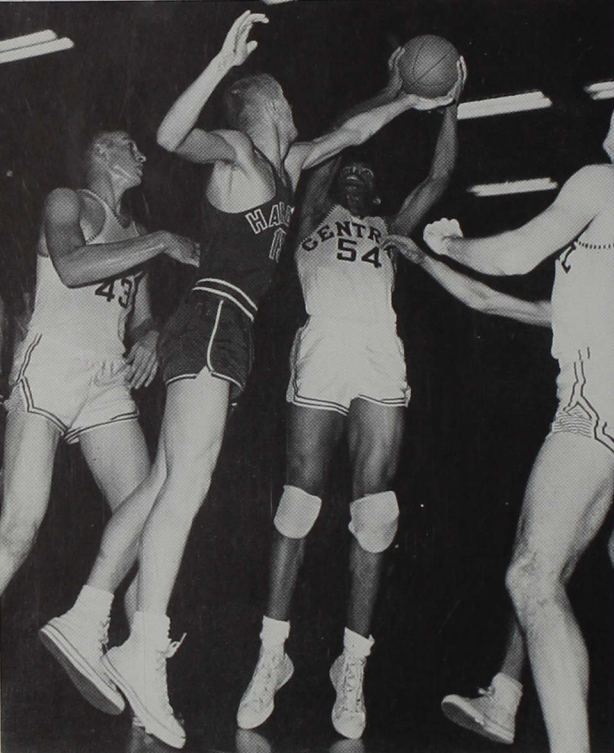
Don Felton



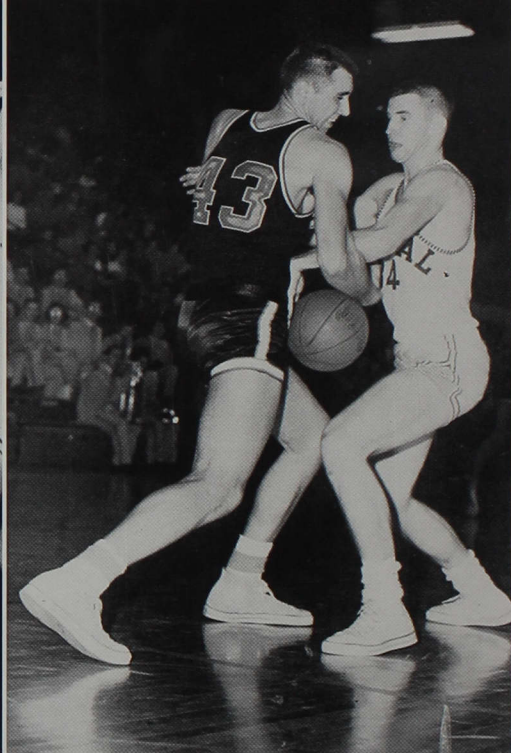
Emmett Herr



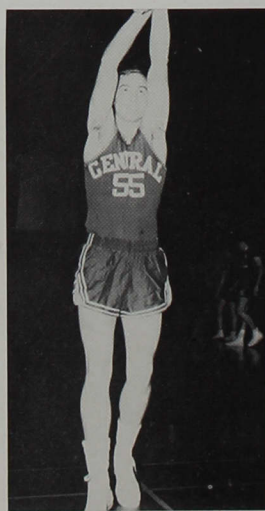
Shannon Jones



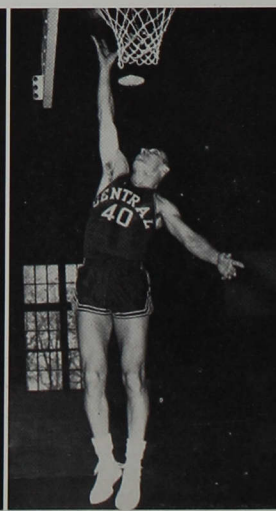
Boyd pulls a rebound away from a Hanover player while Spurgeon and other Central players position for a possible loose ball.



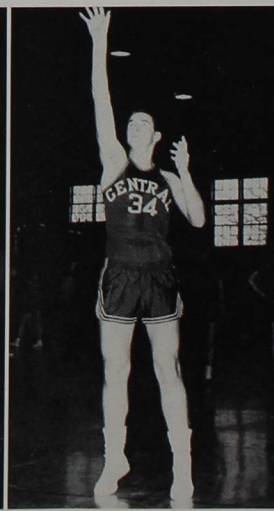
Do you want' a . . . (censored)"



Jerry Lewis



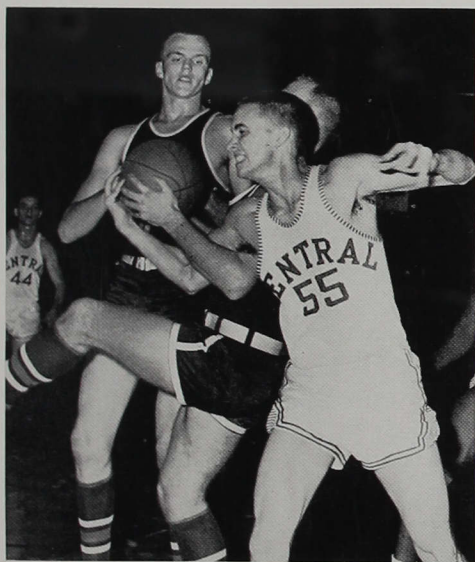
George Marshall



Mickey Shircliff



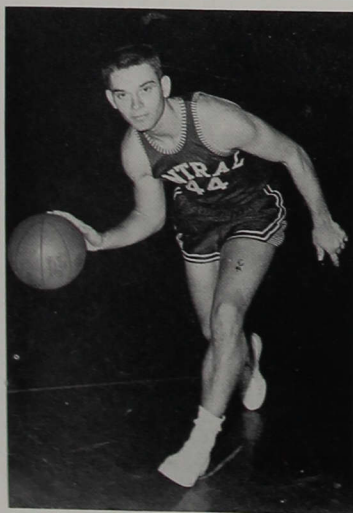
Charles Spurgeon



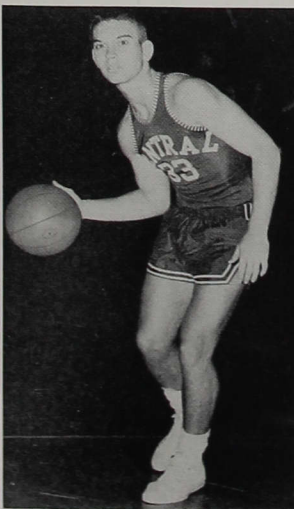
Jerry Lewis struggles for possession of the ball while Jack Tindall moves in to help.

Season's Record

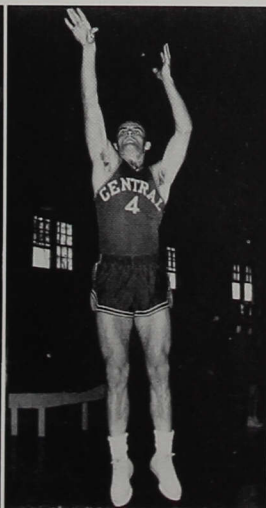
Indiana Central.....72	Tri-State	56
Indiana Central.....60	DePauw	68
Indiana Central.....93	Ft. Harrison	72
Indiana Central.....69	Wabash	60
Indiana Central.....67	Taylor	76
Indiana Central.....69	Hope (Mich.)	85
Indiana Central.....83	Texas Southern	107
Indiana Central.....76	Bellarmine	71
Indiana Central.....97	Milligan	58
Indiana Central.....63	Anderson	73
Indiana Central.....87	Villa Madonna	75
Indiana Central.....62	Franklin	55
Indiana Central.....61	Marian	60
Indiana Central.....77	Manchester	66
Indiana Central.....82	Transylvania	76
Indiana Central.....83	Marian	60
Indiana Central.....71	Hanover	67
Indiana Central.....92	Central State	90
Indiana Central.....74	Taylor	77
Indiana Central.....76	Indiana Tech	65
Indiana Central.....105	Franklin	96
Indiana Central.....62	Anderson	63
Indiana Central.....70	Manchester	90
Indiana Central.....73	Hanover	66



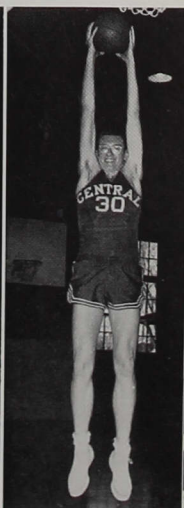
Jack Tindall



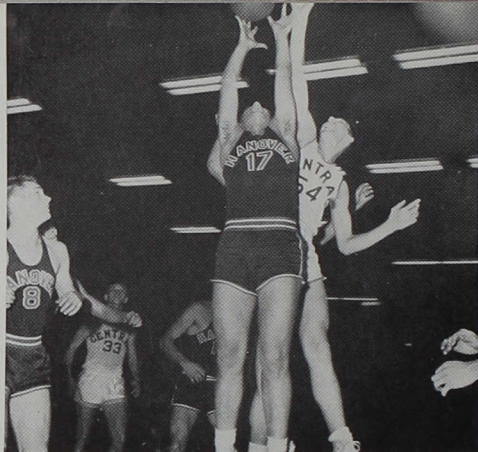
Jim Tindall



Jim Wilbur



Jim Wiley



Delmar Merritt is out rebounded by a Hanover player in a reserve game.

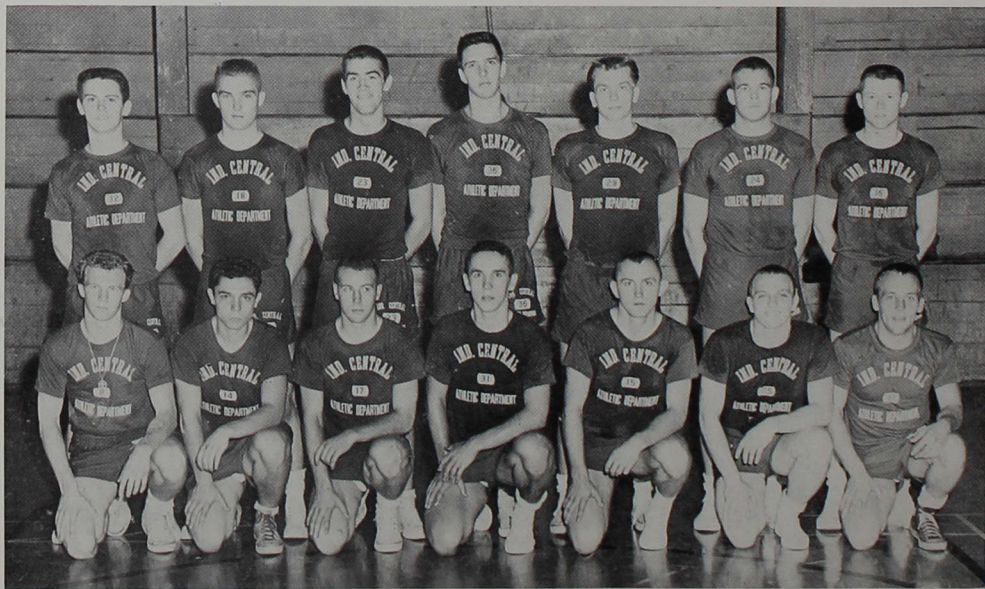
Reserve Basketball

The 'Hound Pups, under Bill Bright, ended their season with a 10-8 record. Seven of the eighteen games were within a 6 point margin; the remaining games ranged between a 39 point decision over Bakalar Air Force Base to two 19 point losses to Franklin and Mason's Oasis.

Bob Creighton held first place in average scoring with a 12.8 average per game.

Season's Record

Indiana Central.....60	Eli Lilly	65
Indiana Central.....56	Wabash	55
Indiana Central.....67	Taylor	69
Indiana Central.....98	Bakalar Air Force Base.....	59
Indiana Central.....77	Mason's Oasis	96
Indiana Central.....50	Anderson	54
Indiana Central.....90	Franklin	77
Indiana Central.....89	Indiana Gear	66
Indiana Central.....66	Southeastern Supply	79
Indiana Central.....69	Marion	51
Indiana Central.....76	Hanover	67
Indiana Central.....69	Taylor	65
Indiana Central.....71	Tabernacle	80
Indiana Central.....66	Franklin	85
Indiana Central.....69	Anderson	63
Indiana Central.....72	Williamson Plating	68
Indiana Central.....77	Manchester	88
Indiana Central.....93	Hanover	82



Row 1: Tom Bukowski, Vince Bisesi, Eddie Jones, Bill Sotts, Jerry Hartman, Thornton Perkins, Terry Wetherald.

Row 2: Milton Mitchell, Deryl Swain, Jim Toney, Delmar Merritt, Bob Creighton, Benny Townsend, Jay Kleine.

Golf

The 1958 golf team recorded the first Hoosier Conference title in the history of the team. Four men earned all-conference positions during the conference meet held at the Butler links. They were Bisesi, Powell, Bunnell, and Otolski.

The Koach's Cup award, given to the player with the lowest average score in pre-conference meets, went to Bunnell.

Don Bisesi and Bob Otolski earned trips to the N.A.I.A. meet at Beaumont, Texas, by their action in the conference meet. Here Bisesi won 24th place in the nation, and Otolski was forced to withdraw because of an injury.

The future looks bright because the team retains everyone except senior Dick Bunnell.



Don Bisesi shows the form that won the conference meet.



Row 1: Dick Bunnell, Bob Wisneski, Bob Otolski.

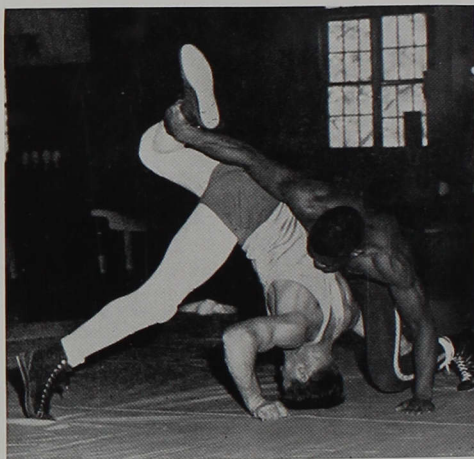
Row 2: Dick Burchard, Roger Hoppes, Don Bisesi, Coach Marvin Hendricks.

Wrestling

Veteran Al Morgan finished his tenth year of wrestling by leading the grapplers to a winning season of 6 wins and 4 losses. Al's first place record was 9 wins, 2 losses, and 3 ties. Willie Martin held second place with 22 wins, 2 losses, and 1 tie, and Dan Welliever earned third place with 9 wins, 4 losses, and 1 tie. Other members of the team were Ramsey (9-5-0), Bruce (5-8-1), Hurrle (6-7-0), Jackson (3-10-0), and Stevens (0-10-0).

Nineteen fifty-nine was the first year for the Little State intercollegiate wrestling tournament. Those that participated other than Central were Ball State, De Pauw, and Wabash. Central placed third to Wabash and De Pauw who took first and second places, respectively. Martin and Morgan took first places in their classes.

Tribute should be given to four-year captain Al Morgan who started his wrestling career at Southport High School, wrestled while serving two years in the Navy, and later aided in bringing wrestling to ICC. Al has had 149 bouts of which he has won 120, lost 21, and tied 8. His honors have been a

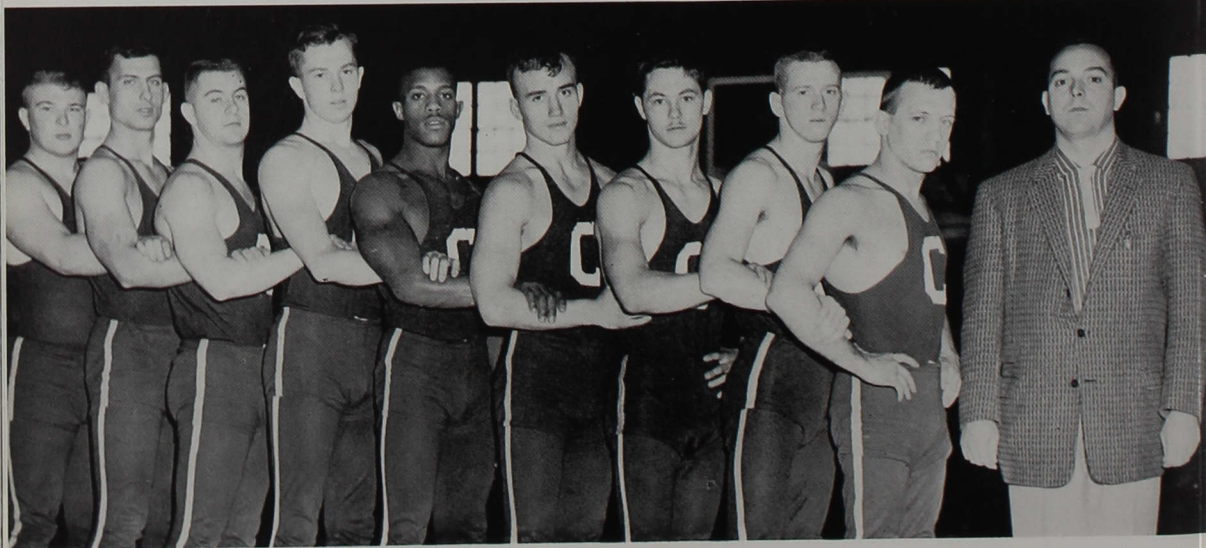


Willie Martin maintains control over his University of Eastern Illinois opponent.

second, third, and fourth in high school state competition, a first in the Illinois AAU in 1955, a first in the Indiana AAU in 1956 and 1957, a second in the National NATA in 1958, and a first in Little State in 1959.

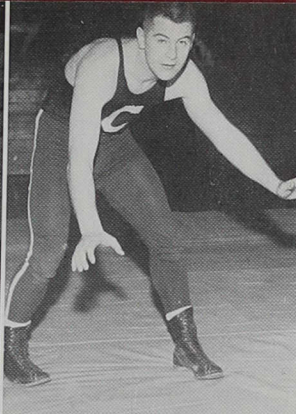
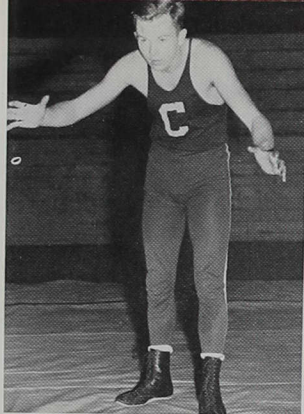
Mike Jackson, Bill Stevens, Lou Hurrle, Jim Bruce, Willie Martin.

James Ramsey, Danny Welliever, Bill Shobe, Al Morgan, Coach Windell.



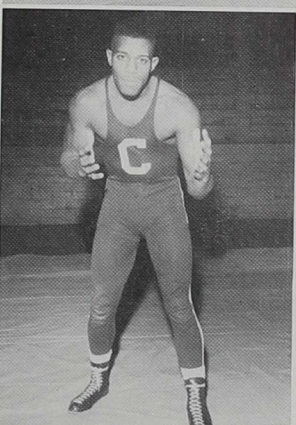
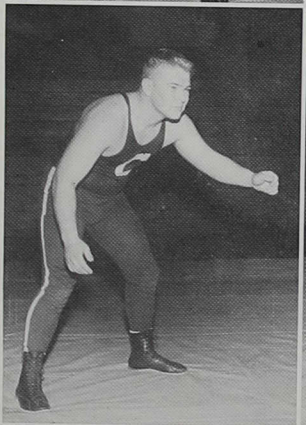
Jim Bruce

Lou Hurre



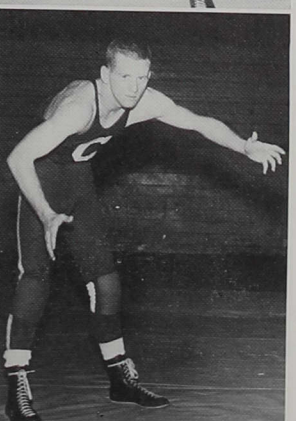
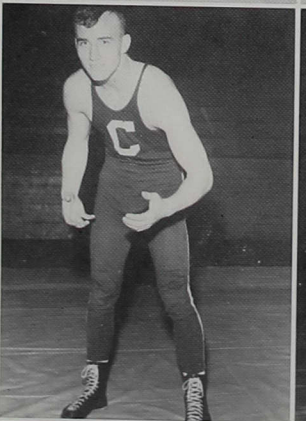
Mike Jackson

Willie Martin



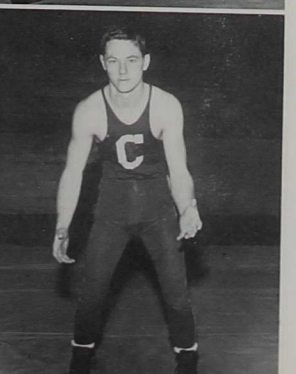
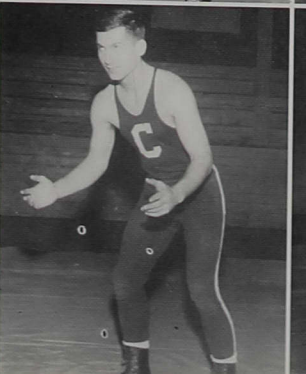
Jim Ramsey

Bill Shobe



Bill Stevens

Dan Welliever



Baseball

Highlighting the spring sports of 1958 was the winning of the Hoosier College Conference by the Greyhound baseball team. The conference title was not decided until the last two games of the season with Franklin. The first of the two games proved to be the deciding factor of the conference title. The game was tied at 1 and 1 until St. Clair scored from a hit by Cox. The second game went in favor of Franklin, but the percentages were still in favor of Central. The final conference record was 7 wins and 3 losses.

Besides stiff conference competition, the 'Hounds

faced larger schools such as Indiana State and highly ranked Indiana University. The season's record was 14 wins and 7 losses.

Gardner led the consistent starters in the batting averages with his .345. DeHart was the number one pinch hitter with .429. The members of the team that were chosen to the all-conference team were Cox, Gardner, Howard, Moye, and Poole.

The team for the 1959 season will miss Jack Fischer, Phil Fisher, Larry Gardner, and Don Armstrong from the line-up, all of whom graduated.

Freshman Dick Dering sends one into left field.



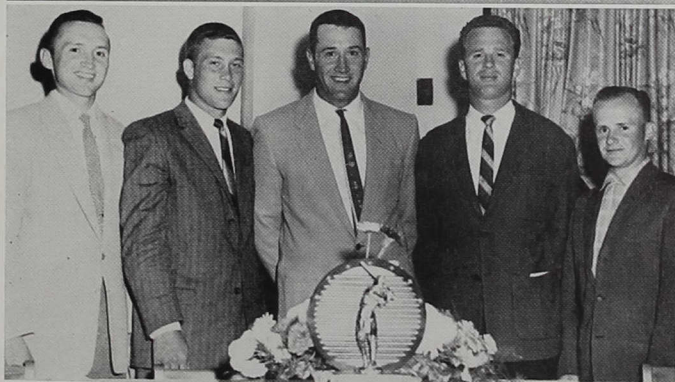
Infie'der Jim Wilson tries his turn at bat.



Springer slides into home —
"Safe."



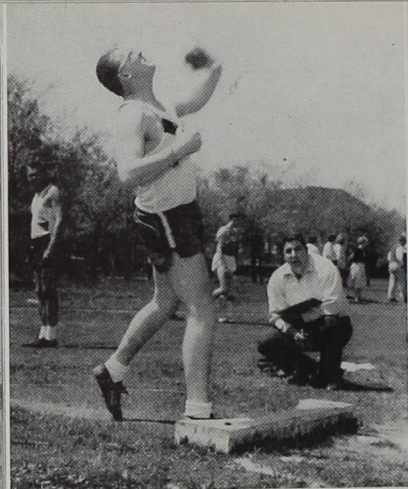
The seniors pose with the baseball trophy at the spring sports banquet. Left to right: Phil Fisher, Don Armstrong, Larry Gardner, Jack Fischer and John Todd.



Row 1: John Todd, Leo Moye, Wiley McCullough, Ray Howard, Don Poole, Larry Cox, Tom Springer, Bert Lacey.
Row 2: Phil Klinger, Joe DeHart, Bob Vuillemot, Jim Wilson, Bill Kruse, Dick Dering, Jack Fischer, Don Arm-

strong. Row 3: Phil Fisher, Hager St. Clair, George Marshall, Henry Easter, Larry Gardner, Jay Coahran, Ed Moore, Mickey Milhous.





Charles Dorrel



Don Felton



Gene Lausch

Track

The 1958 track team lacked the manpower that was necessary to make a winning season.

Although the team ran thin in both the running and field events, several individual cindermen set some new records for our field and for the conference. The new track records were set by England with his 43' 11" throw of the shot-put and by Henson in the 220 with a 22.5 mark.

A new conference record was set by Goss in the 880 with his 1:57.9 mark. The relay team (Henson-Goss-Adnson-Lausch) tied the past record of 3:27.4.

Veterans Art Targgart and Don Henson were the only two to graduate from the team.

The squad placed third in the Earlham relays and ended in fourth place in the Hoosier conference.

Coach Wallace and assistant coach Bradley advise Bill Shobe during a rest period.

Don Felton strains for that extra inch during the broad jump.



Marshall Goss and Don Henson exhibit a perfect hand-off during the mile relay.



Season's Record

Indiana Central	38
Indiana Central	57
Indiana Central	44
Indiana Central	22½
Indiana Central	25
Indiana Central	23½
Indiana Central	64

Wabash	93
Anderson	74
Manchester	81½
Hanover	78½
Hanover	73
Hanover	57
Indiana State	77
Taylor	36½
Anderson	61
Butler	64
Ball State	81½

Row 1: Bob Werkmeister, Dan Harwood, John Chastain, Don Henson, Norman Fechtig, Vaun McAhren, Mike Maguire. Row 2: Gerald England, Loren Thomas, Charles Schuman, Art Targgart, Leon Adnson, Bill Shobe, Marshall

Goss. Row 3: Coach Wallace, Gene Lausch, Don Felton, Jim Wilbur, Ivan Propst, Charles Dorrel, Don Davis, Assistant Bradley.





"Who said the bell rang?"



Judy Burchard
Editor

The people, not the newness or the quantity of its buildings, the size of its football stadium, or the number of books in its library, are what make a school. We at Indiana Central College point with justifiable pride to our people — our students, our faculty, our administration — for we believe they are special. They are the reasons we come to Indiana Central as freshmen, and why, after we are graduated, we will be proud to be alumni.

People



PRESIDENT I. LYND ESCH

A. B. Chapman College; Th.M. University of Southern California Graduate School of Religion; Ph.D. University of Southern California; D.D. York College; LL.D. Butler University; L.H.D. Lebanon Valley College.

Administration and Faculty

ARTHUR F. WILLIAMS

Assistant to the President and Director of Development;
A.B. Indiana Central College.

ROBERT E. CRAMER

Dean and Registrar; B.S. Indiana State Teachers College;
B.D. United Theological Seminary; M.A. Yale University;
Ph.D. Yale University.





DON E. FLEENER

Director of Admission; B.S. in Education Indiana Central College.



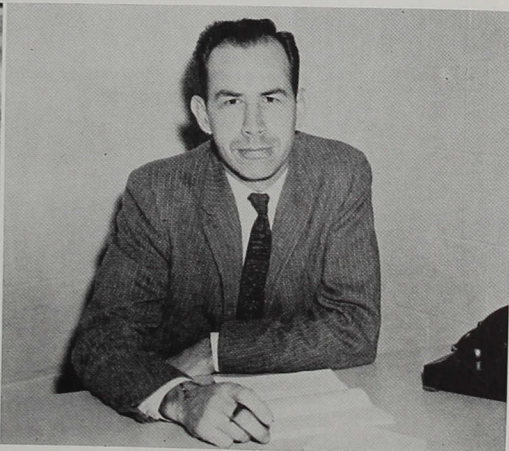
MARY CAROLYN HUEY

Dean of Women and Assistant Professor of Home Economics; B.S. in H.E. and M.S. in H.E. Purdue University.



PARKER P. JORDAN

Coordinator of Student Activities; A.B. DePauw University; L.H.D. DePauw University.



ROBERT E. MCBRIDE

Dean of Men and Associate Professor of Philosophy and Psychology; A.B. Indiana Central College; B.D. United Theological Seminary.

HARRY MCGUFF

Director of Evening School and Industrial Relations Center; B.S. in Education Indiana Central College; M.S. in Business Education Indiana University; M.S. in Education Indiana University.

LEO S. MILLER

Treasurer and Business Manager; B.S. Indiana State Teachers College.

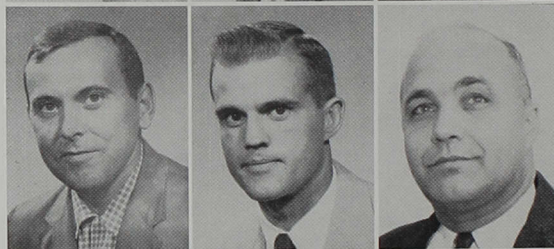




ONA AGATE, Matron of Wilmore Hall and College Nurse, R.N., General Hospital (Indianapolis).

BIRTLE ALLEN, Superintendent of Maintenance.

EVA ARNOLD, Manager of the Bookstore.



GERALD G. BOYCE, Associate Professor of Art, B.S. Milwaukee State Teachers College; M.F.A. University of Iowa.

WILLIAM BRIGHT, Instructor of Physical Education and Baseball Coach, Assistant Dean of Men, B.S. Indiana Central College.

ROBERT M. BROOKER, Professor of Chemistry, B.S. in Ed., University of Missouri; B.S. in Chem., University of Missouri; Ph.D. University of Missouri.



MARY BROWN, Head of Cupboard.

JOYCE COLE, Secretary to the President.

VIRGINIA CRAVENS, Assistant Professor of English (Retired), A.B. DePauw University; M.A. Indiana University.



VICTOR B. DANEK, Associate Professor of Music, B. Mus. American Conservatory of Music (Chicago); M.Mus. American Conservatory of Music (Chicago).

ROY VERNON DAVIS, Associate Professor of Education, A.B. Indiana Central College; M.A. Indiana State Teachers College.

BETTY JEAN DAY, Assistant Professor in Physical Education, B.S. Indiana University; M.S. Indiana University.



ESTHER ELLIOTT, Matron of Men's Hall.

LOIS TAYLOR FOUTS, Assistant Professor of English, A.B. Indiana Central College; M.S. in Education, Indiana University. Advanced Study: Indiana University, Indiana University Extension Division, University of Colorado, Northwestern University.

MARLENE FISHER, Secretary to the Business Manager.



RUTH L. HAGELSKAMP, Accountant, B.S. in Business, Indiana University.

FREDERICK D. HILL, Assistant Professor in History, B.S. in Education, Ohio State University, M.A. Ohio State; B.D. United Theological Seminary.

MRS. JUSTIN MARSHALL, Part-time instructor in English, A.B. Indiana Central College, M.A. in Education, Indiana University.

ANNE D. KELLER, Associate Professor of English, A.B. Brooklyn College, M.A. Columbia University; Ph.D. Columbia University.

ALLEN BOND KELLOGG, Professor of English, A.B. University of Missouri; M.A. University of Missouri; Ph.D. University of Chicago.

ROBERT L. KENT, Associate Professor of Biology, B.S. Butler University; M.S. Butler University.

FRIEDA M. PIEPENBROK, Matron of Dailey Hall.

KENNETH W. KOHN, Assistant Professor of Speech and Drama, B.A. Otterbein, M.S. Syracuse University.

KONSTANTIN KOLITSCHIEV, Associate Professor of Physics, B.S. Irkutsk University (Siberia); Ph.D. Tomsk Chemical Technological Institute (Siberia).

WILMER LAWRENCE, Assistant Professor in Business Administration, B.S. Indiana Central College; M.S. Butler University.

MRS. BETTY MAUDLIN McQUILLEN, Secretary to the Assistant to the President.

RUSSELL S. MERKEL, Professor of Education, Ed.D. Southern Illinois Teachers College; M.S. in Ed. Indiana University; Ed.D. Indiana University.

ALBERTA MILLER, Assistant Professor in Business, B.S. Indiana State Teachers College; M.S. Indiana State Teachers College.

EDNA MILLER, Librarian, A.B. Indiana Central College; B.S. in Library Science, University of Illinois Library School; M.A. Butler University.

WILLIAM PITT MORGAN, Professor of Biology, A.B. Indiana Central College; M.A. Indiana University; Ph.D. Indiana University; L.L.D. Indiana Central College.

ANGUS NICOSON, Athletic Director and Assistant Professor of Physical Education, A.B. Indiana Central College; M.A. Indiana University.

PAUL W. PIELEMEIER, Associate Professor of Education, B.S. Indiana State Teachers College; M.S. Indiana State Teachers College.

PAUL REDLIN, Head of the Cafeteria.

ALLAN FABER SCHIRMER, Associate Professor of Music, B.Mus. Northwestern University; A.B. Denison University; S.M.M. Union Theological Seminary; Prof. Dip. Columbia University.

GEORGE W. SHIRLEY, Assistant Professor of Music, B.M. Central College, M.M. University of Michigan.

KENNETH J. SIDEBOTTOM, Assistant Professor of Mathematics, B.S. Indiana Central College; M.S. Purdue University.





LESTER P. SLEZAK, Part-time instructor in Music, B.M. Eastman School of Music; M.M. Eastman School of Music.

KENNETH E. ST. CLAIR, Professor of History, A.B. Lawrence College; M.A. University of Wisconsin; Ph.D. Ohio State University.

EUGENE T. UNDERWOOD, Professor of Languages, A.B. Butler University; M.A. Duke University; Ph.D. University of Wisconsin.

SIBYL WEAVER, Professor of English, A.B. Indiana Central College; M.A. Indiana University; L.H.D. Indiana Central College.

JAMES A. WEBER, Professor of Bible and Religion, A.B. Indiana Central College; B.D. United Theological Seminary, M.S. Butler University.

FLORABELLE WILLIAMS, Assistant Librarian, B.S. in Ed., Indiana Central College.

JOHN T. WINDELL, Assistant Professor in Physical Education and Football and Track Coach, B.S. Indiana Central College; M.A.T. in Biology, Indiana University.

JAMES ZIMMERMAN, Associate Professor of Biology, B.A. Hanover, M.A. in Zoology, Indiana University, Ph.D. Indiana University.

Those Not Pictured

VELMA BAILEY, Part-time Instructor in Education, B.S. Central Normal College; M.A. Indiana University; Advanced Study: Butler University.

MAUDETHER CULLOM, Assistant to the Registrar.

SHARON CROSIER, Receptionist.

HENRY FINLEY, Part-time Instructor in Economics, Indiana University.

HAROLD HANSEN, Part-time Instructor in Music, Juilliard School of Music.

MARVIN L. HENRICKS, Associate Professor of Sociology, A.B. Indiana Central College; B.D. United Theological Seminary. Advanced Study: University of Minnesota, University of Southern California, Indiana University.

CHARLES H. HILDRETH, Assistant Professor of History, A.B. Maryville College; M.A. Northwestern University; Ph.D. University of Florida.

GEORGIA D. HOOK, Part-time Instructor in Marketing.

MARGA MEIER, Associate Professor of Modern Language, Universities of Freiburg and Wuerzburg (Germany); Ph.D. University of Wuerzburg.

DEAN RANSBURG, Director of Public Relations; A.B. Indiana Central College.

ISABEL MONROE, Secretary to Director of Admissions; A.B. Indiana Central College.

MARILYN REID, Receptionist, Dean's Office.

REV. WALTER SMITH, Part-time Instructor in Bible and Language, A.B. Indiana Central College; B.D. United Theological Seminary.

H. MERRILL UNDERWOOD, Part-time Instructor in Education, A.B. Indiana Central College; M.A.

Senior Class

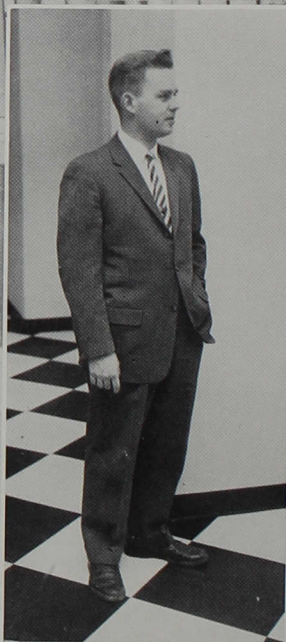
OFFICERS

<i>Evelyn Boring</i>	<i>Secretary</i>
<i>George Marshall</i>	<i>Vice-president</i>
<i>Wanda Ruckle</i>	<i>Treasurer</i>
<i>Al Morgan</i>	<i>President</i>
<i>Leo Moye (not pictured)</i>	<i>Student Council Representative</i>



Who's Who...

Students who have been elected to "Who's Who" have received one of the highest honors bestowed upon college undergraduates. The Academic Dean of the College, the Dean of Men, and the Dean of Women nominate and submit the names of the candidates for the acceptance of the Approving Committee. These people are judged by their academic standing, their leadership, their participation in extra-curricular activities, their service to the school, and their promise of future success.



in American Colleges and Universities

This year thirteen students were chosen. Two of them are not pictured. They are Donna Shearer and Henry Taylor. The others chosen were page 76, top row: Virgil Keefer, David Young, and Evelyn Boring. Lower row: Helen York, Carolyn Cates, and Sandra Wright. On page 77, top row: George Marshall and Marilyn Merritt. Lower row: Delane Peterson, Byung Doo Hong, and Nancy Ransburg.

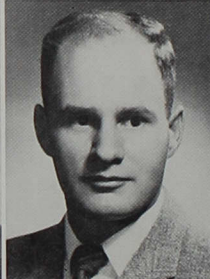




LEON EUGENE ADNSON
New Carlisle, Indiana
Bachelor of Science

NORMA FERN BARNETT
West Newton, Indiana
B.S. in Education

PHILIPPE BAUMANN
(not graduating)



HAROLD EUGENE BEASLEY
Odon, Indiana
Bachelor of Science

LARRY JEAN BINNIE
Indianapolis, Indiana
B.S. in Bus. Admin.

LARRY DON BLEDSOE
West Baden, Indiana
Bachelor of Science



EVELYN KNOOP BORING
Finly, Indiana
Bachelor of Science

ANN SCHOONOVER BOWLES
Indianapolis, Indiana
B.S. in Education

RICHARD EUGENE BUNNELL
Indianapolis, Indiana
Bachelor of Arts



SANDRA LITTLER BUNNELL
Indianapolis, Indiana
B.S. in Education

FREDERICK JAY CAMPBELL
Geneva, Indiana
Bachelor of Science

BARBARA ANN CARRICO
Indianapolis, Indiana
Bachelor of Science



CAROLYN IRENE CATES
Kingman, Indiana
B.S. in Education

NUNG HO CHOI
Seoul, Korea
B.S. in Bus. Admin.

JAE KUCK CHUNG
Seoul, Korea
Bachelor of Arts

SUZANNE CLARK
Boswell, Indiana
Bachelor of Science

JOHN ALAN COAHRAN
Lebanon, Indiana
Bachelor of Arts

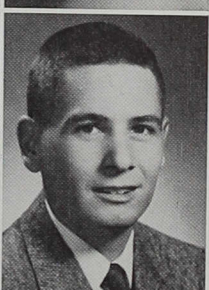
MILDRED BEATTY COLE
Walkerton, Indiana
B.S. in Education



RUTHIE LEE COLLINS
Indianapolis, Indiana
Bachelor of Science

LARRY KEITH COX
Paoli, Indiana
Bachelor of Science

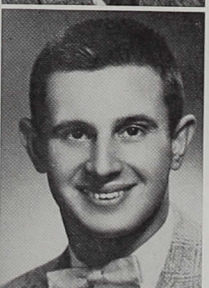
DONALD CUNNINGHAM
Beech Grove, Indiana
Bachelor of Arts



CHARLES DAVID CURTS
Brook, Indiana
Bachelor of Science

LEONA HALL DARBRO
Indianapolis, Indiana
Bachelor of Science

DANIEL VALENTINE DOLNIAK
South Bend, Indiana
Bachelor of Arts



CHARLES RAY DORREL
Indianapolis, Indiana
Bachelor of Science

DOROTHEA M. DOWLING
Jasper, Michigan
Bachelor of Arts

JAMES CHARLES DRESSLER
Lansing, Illinois
Bachelor of Arts

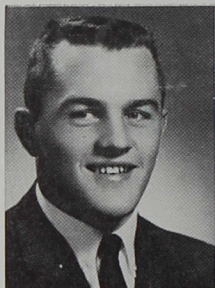


SHERRY DIANE EASTER
Indianapolis, Indiana
B.S. in Education

JOHN ENGLE
Fort Wayne, Indiana
(not graduating)

RITA JOY EVANS
Brook, Indiana
Bachelor of Science





GEORGE VERNON FALLOWFIELD
Beech Grove, Indiana
Bachelor of Science

PHYLLIS ADE FILLINGER
Indianapolis, Indiana
Bachelor of Science

RONALD LEE FINROCK
Indianapolis, Indiana
Bachelor of Science



GEORGE ROBERT GRAY
Indianapolis, Indiana
Bachelor of Science

NORMA GRAY PERRY
Indianapolis, Indiana
Bachelor of Arts

CARL HAROLD GRIGSBY
Indianapolis, Indiana
Bachelor of Arts



FRANCES LIPSCOMB GROVES
Indianapolis, Indiana
Bachelor of Science

HERMAN BARKER HALCOMB
Indianapolis, Indiana
B.S. in Bus. Admin.

DALE EDWIN HARNER
Washington, Indiana
Bachelor of Arts



JAMES LOWELL HARRISON
Indianapolis, Indiana
Bachelor of Science

MARY SMITH HAYNES
Lafayette, Indiana
B.S. in Education

JAMES JOSEPH HEGG
Covington, Indiana
Bachelor of Arts



FORREST MILTON HERRON
Mooresville, Indiana
Bachelor of Science

MARY BELLES HILLIS
Indianapolis, Indiana
Bachelor of Arts

WAYNE ARDEN HILLIS
Indianapolis, Indiana
Bachelor of Arts

DANIEL LEE HIRTH
Indianapolis, Indiana
Bachelor of Science

BYUNG DOO HONG
Seoul, Korea
Bachelor of Arts

ROGER LEE HOPPES
Indianapolis, Indiana
B.S. in Bus. Admin.

JUNE CLARICE JORDAN
Indianapolis, Indiana
Bachelor of Science

ROBERT EUGENE HOWE
Indianapolis, Indiana
B.S. in Education

VIRGIL EUGENE KEEFER
Wawaka, Indiana
Bachelor of Arts

THOMAS EDWARD KING
Corydon, Indiana
Bachelor of Science

JAMES RICHARD LANSINGER
Greenfield, Indiana
Bachelor of Science

JOHN LEWIS LEWELLEN
Indianapolis, Indiana
B.S. in Bus. Admin.

CAROLYN SUE LINCKS
Indianapolis, Indiana
Bachelor of Arts

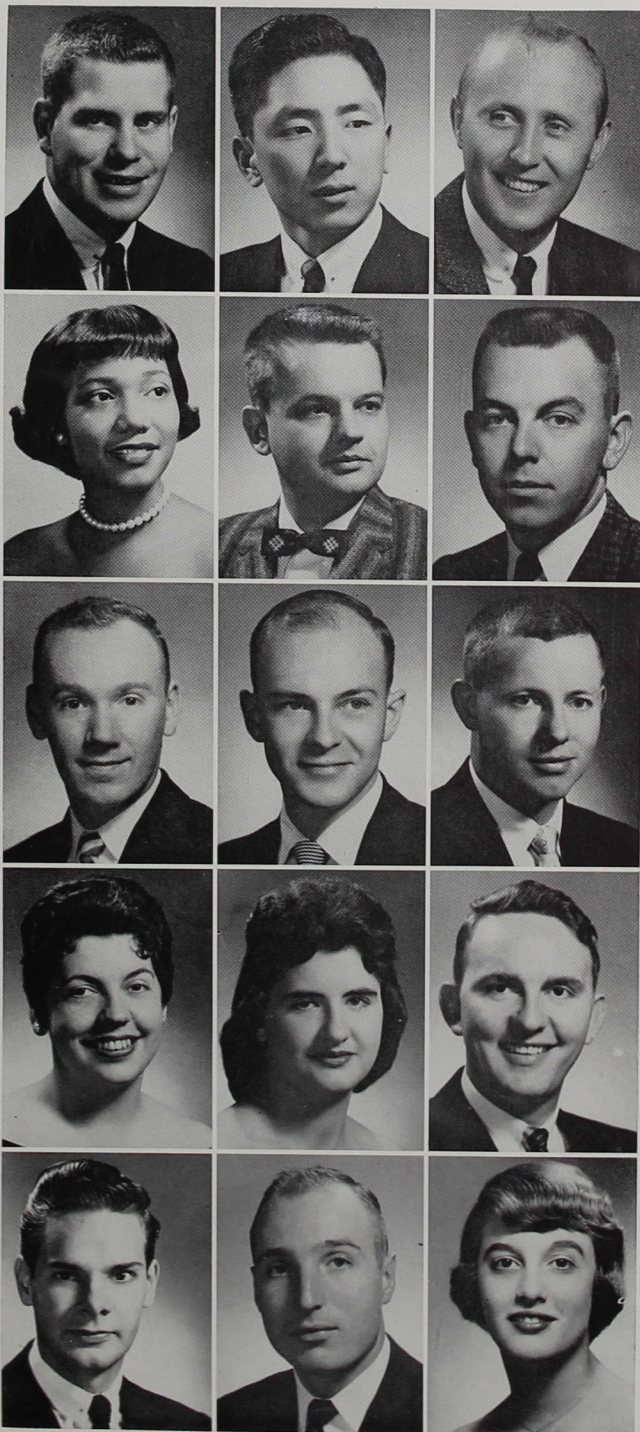
PATRICIA ANNE LIPP
Kokomo, Indiana
B.S. in Education

IRA LITTLETON, JR.
(not graduating)

LYNN E. LONGENBAUGH
Decatur, Illinois
Bachelor of Arts

GEORGE ALLEN MARSHALL
Southport, Indiana
Bachelor of Science

JANE GILLEY MATCHETT
Indianapolis, Indiana
B.S. in Education

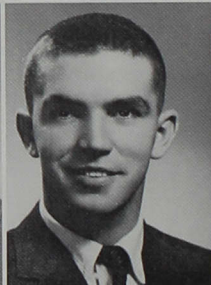




GRACE WINIFRED MAZE
Indianapolis, Indiana
Bachelor of Arts

RUBY VIRGINIA MERKEL
Indianapolis, Indiana
B.S. in Education

MARILYN MERRITT
Gibson City, Illinois
B.S. in Education



ALLEN MARTIN MORGAN
Southport, Indiana
Bachelor of Science

LEO FREDRICK MOYE
Indianapolis, Indiana
Bachelor of Science

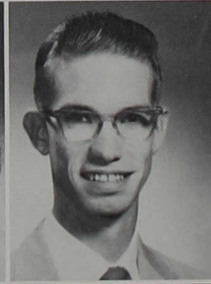
CAROLYN NEELY NAY
Greenwood, Indiana
Bachelor of Science



NORVELLE GENE PERKINS
Indianapolis, Indiana
Bachelor of Science

DELANE MCKELFRESH PETERSON
Indianapolis, Indiana
Bachelor of Science

HAROLD DALE PEYTON
East Gary, Indiana
Bachelor of Science



NANCY TIANO RANSBURG
Indianapolis, Indiana
Bachelor of Arts

THOMAS EVAN REED
Indianapolis, Indiana
Bachelor of Arts

WANDA LEE RUCKLE
Lafayette, Indiana
B.S. in Education



DOROTHY LEE SARGENT
Indianapolis, Indiana
Bachelor of Arts

ELLSWORTH SHADE
Indianapolis, Indiana
Bachelor of Arts

MARWAN SHAWA
Indianapolis, Indiana
Bachelor of Arts

DONNA ROSENBERGER SHEARER
Indianapolis, Indiana
B.S. in Education

RICHARD IVAN SHEARER
Indianapolis, Indiana
Bachelor of Science

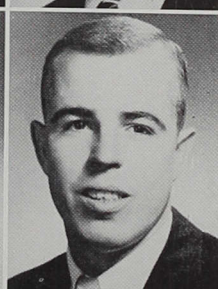
JACK HYLAND SMITH
Indianapolis, Indiana
Bachelor of Arts



WILLIAM ELBERT STEVENS
Portland, Indiana
Bachelor of Arts

JANICE LEE STONE
Jeffersonville, Indiana
B.S. in Education

PHIL W. STRADER
Indianapolis, Indiana
Bachelor of Science



BURTIS GILBERT TAYLOR
Indianapolis, Indiana
Bachelor of Science

HENRY MARSHALL TAYLOR
Indianapolis, Indiana
Bachelor of Science

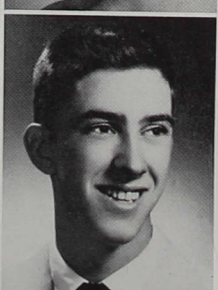
SHIRLEY ANN TAYLOR
French Lick, Indiana
Bachelor of Science



FRED FINLEY THAYER
Indianapolis, Indiana
Bachelor of Science

TEDDY RAY THOMPSON
Fairland, Indiana
Bachelor of Science

DONALD JOE TOBIAS
Indianapolis, Indiana
Bachelor of Science

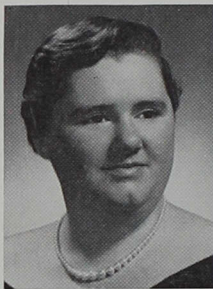


HAROLD TRUMP
Tippecanoe, Indiana
Bachelor of Arts

FRANCES LOUISE VAIL
Indianapolis, Indiana
Bachelor of Arts

LEE VAN JELGERHUIS, JR.
Indianapolis, Indiana
B.S. in Bus. Admin.





PATRICIA ALICE VANTREESE
Indianapolis, Indiana
Bachelor of Arts



JUNE DAVIS VANWAGNER
Indianapolis, Indiana
Bachelor of Science



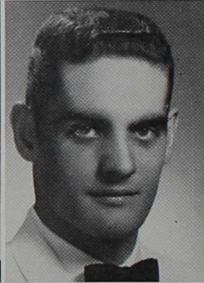
STANLEY WARREN
Indianapolis, Indiana
Bachelor of Science



DONALD LEE WATSON
Indianapolis, Indiana
B.S. in Bus. Admin.



WILLIAM R. WHEELER
New Albany, Indiana
Bachelor of Science



JAMES EDWARD WILBUR
Columbus, Indiana
Bachelor of Arts



SANDRA KAY WRIGHT
South Bend, Indiana
B.S. in Bus. Admin.



WILLIAM DALLAS YARBROUGH
Indianapolis, Indiana
B.S. in Bus. Admin.



HELEN MARGARET YORK
Corydon, Indiana
B.S. in Education



DAVID EARL YOUNG
Camp Hill, Pennsylvania
Bachelor of Arts



LINDA ANN ZEIGLER
Indianapolis, Indiana
Bachelor of Science



JOHN ROGER YOUNG
Colorado Springs, Colorado
Bachelor of Arts

Junior Class

OFFICERS

Joe Gossman	President
Arlene Buskirk	Treasurer
Bill Howard	Vice-president
Carolyn France	Secretary
Jack McKinney	Student Council Representative

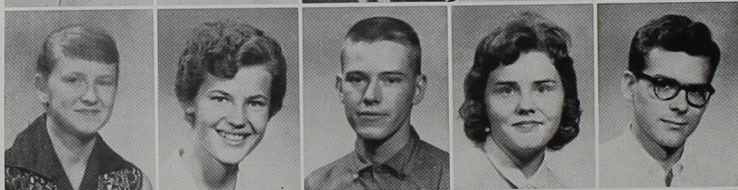




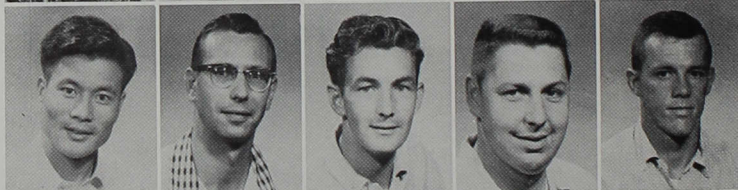
Elzie Austin
Maridee Balsley
Calvin Benson
Ron Benz
Vince Bisesi



Gloria Brewer
Patricia Brewer
Jim Bruce
Hanna Bunner
Larry Bunting



Judy Burchard
Arlene Buskirk
Ron Butterworth
Sandra Byrum
Norman Chaney



Jae Kuck Chung
Ed Crause
Connie Cress
Walter Curran
Bob Curtis



Jane Danner
Don Davis
Mary Alice Day
Joe DeHart
Etta Lou DeMoss



Carolyn Devitt Bunting
Marion Dougherty
Karen Easley
Myles Eley
Darlene Emmons



Don Felten
Gene Ferguson
Carolyn France
Marti Frazier
Bob Frey



Richard Fuller
Sally Gaddie
Edith Garrison Griffin
Edna Garrison
Carolyn Geier

Peggy Gibson
George Goba
Marshall Goss
Joe Gossman
Burman Graham



Ron Griffin
James Grimes
Dale Hardin
Marilyn Hawkins
Allen Head



Pete Heller
Bill Herdman
Ron Howard
Bill Howard
John Howland



Louie Hurre
Shannon Jones
John Kanouse
Ivan Kellogg
Donna Key



Russ Kistler
Ken Knox
Louise Kortepeter
Elsie Lammert
Gene Lausch



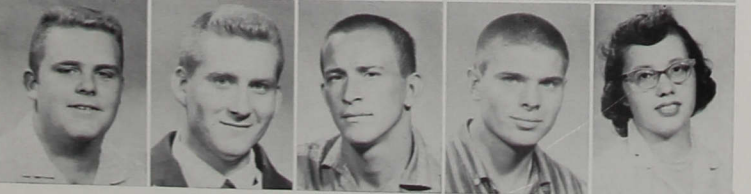
Madeline Linton
Joe Lowry
Carol McComb
Wiley McCullough
Ruth McDonald



Jack McKinney
Barbara Miller
Jack Miller
Milton Mitchell
Gordon Montgomery



Ed Moore
Ivan Nading
Jim Nyers
Bob Otolski
Arlene Overholtz





Neal Partain
Dick Patterson
Marlene Pence
Jim Peterson
Dick Pollard



Don Poole
Audrey Porter
Jean Potts
Sarah Repp
Frances Rippy



Clifford Robertson
Dave Roessler
Fred Rossmann
Wanda Rucker
Hager St. Clair



Orrin Sarles
Charles Schuman
Bill Shannon
Artie Shaw
Naomi Ruth Shierling



Dotte Shortridge
Beverly Simon
Mabel Smith
John Spears
Curtis Speer



Bob Stucker
John Thompson
Jerry Thurston
Gene Tullis
Bob Vuilleminot



Mary Watkins
Bob Welling
Jim Wentz
Carolyn White
Norman Wickliff



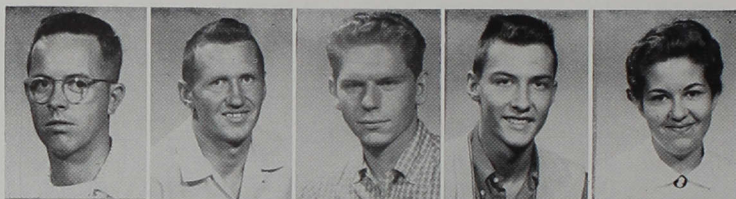
Ed Williams
James Winton
Rauf Yacu
Dan Zielinski

Sophomore Class

OFFICERS

- Linda ShowalterTreasurer
Dave BrittenhamStudent Council Representative
Mickey ShircliffPresident
Pauline MilhouseSecretary
Tom LoerVice-president





Dick Abel
Phil Acton
Mike Aczinowicz
Jerry Adams
Janet Alex



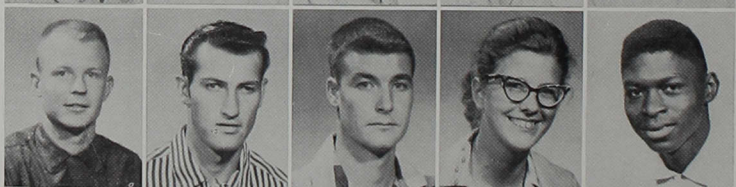
Ada Allman
Dolores Anderson
Marvin Anderson
Don Andrews
Larry Andrews



Dane Ashcraft
Jim Ashcraft
Pat Beals
Dave Beeson
Suzette Bennington



Phyllis Black
Joyce Blackburn
Madeleine Bonne
Calvin Brandenburg
Brenda Brane



Dave Brittenham
Eldon Brown
Howard Brown
Joyce Brown
Reuben Burnett



Diana Bymaster
Richard Carlson
John Cazier
John Chaille
Raeburn Chansler



Daniel Chapell
John Chastain
Sherry Clodfelder
Charlene Cox
Richard Crafton



Wadiah Dahlan
Sandra Dale
Peggy Darland
David Delph
Thomas Denny

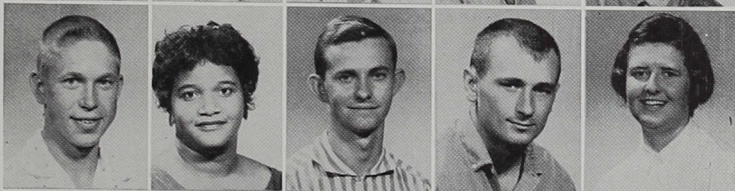
Ron Dice
Leland Dilk
Laverne DuBois
Marilyn Dykstra
Hank Easter



Phil Edwards
Sharon Edwards
Gerald England
Bob Farnar
Don France



Roger Franks
Margaret Garrett
Carsey Gentry
Danny George
Valerie Gira



James Glotfelty
Gordon Goss
Mary Jo Graham
Arthur Gray
Earl Green



Betty Hall
Roberta Hart
Patty Hartman
Tom Hartsock
Charles Harvey



Dan Harwood
Margaret Head
Paul Healey
Dave Heckert
Ingrid Henkels

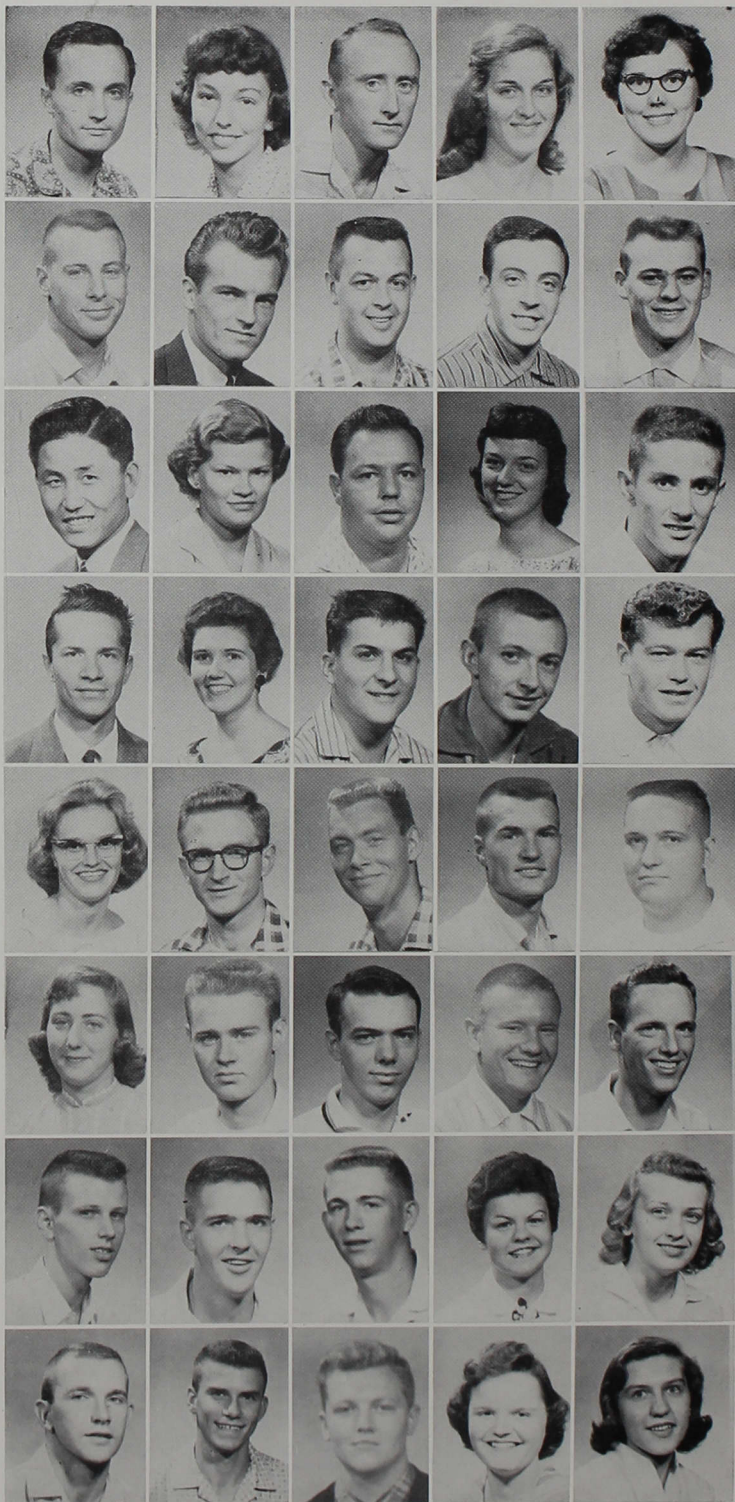


Marilyn Hicks
Janis Holloway
Linda Horner
Ray Howard
Ed Huffman



Arleen Hummel
Glenn Hunsucker
Dave Hyten
Gladys Ikerd
Ron Ireland





Phil Isgrigg
 Carol Jackson
 Hugh Jenkins
 Alice Faye Johns
 Shirley Johnston

Eddie Jones
 Bob Kaczorowski
 Charles Kalies
 Athanasios Kazandzos
 Dick Kidder

Jung Hi Kim
 Nancy Kimpling
 Joe Kirk
 Linda Kirkham
 Phil Klinger

Ted Koch
 Hattie Kruger
 Bill Kruse
 Bert Lacy
 Stephen Lane

Joyce Lee
 Ed Lindley
 Tom Loer
 Vaun McAhren
 Neal McCarty

Rose McCombs
 Tom McCormick
 Bob McVey
 Ralph Maguire
 Dave Maish

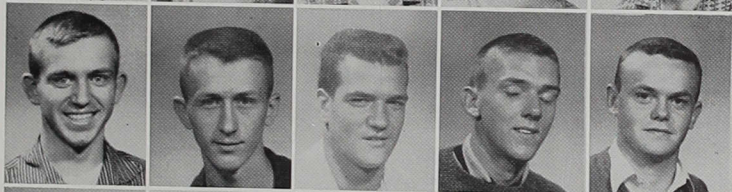
David Mattingly
 Delmar Merritt
 Mickey Milhous
 Pauline Milhouse
 Fran Miller

Ron Mitchell
 Bill Moeller
 Gerald Nay
 Mary Ann Norris
 Sandra Osborne

Dale Owens
 Rose Patrick
 Michael Percy
 Dave Pike
 Ed Pinnell



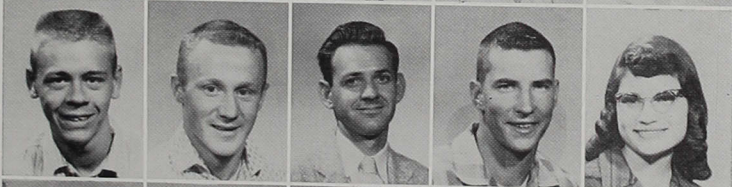
Al Printz
 Ivan Propst
 Carol Purichia
 Mike Quinn
 Dave Rathbun



Kenneth Ray
 Sylvia Roberts
 Ron Rucker
 Doreen St. Clair
 Janet Schoonover



Bill Schultz
 Billy Self
 Don Shanks
 Mickie Shircliff
 Linda Showalter



Gerald Sipes
 Ron Speedy
 Tom Springer
 Dick Starkey
 Thelma Jean Stevens



Ray Stivers
 Bill Stotts
 Ken Stough
 Dave Syphers
 Miriam Targgart



Loren Thomas
 Rose Throm
 Jack Tindall
 Jim Tindall
 Martha Turner



Dick Umbach
 Barbara VanAusdal
 Betty VanderBaan
 Evelyn Waddell
 Judy Waggoner





Vance Walker
Dallas Warner
Ron Waters
Bob Werkmeister
Alan Whalen

Lewis Wheat
Phyllis Wheeler
Jim Wiley
Maryfrances Wilkinson
Shirlee Wilmoth

Jim Wilson
Garold Winzenread
Elsie Wulf
Jacqueline Young

STUDENTS NOT PICTURED

SENIORS

Jerry Bland
Arthur Detherage
Anne Middleton Jensen
Marilyn Miller
Nancy Mates Page
Wynonia Patterson
Theima Turner

JUNIORS

Bob Armstrong
Dave Decatur
Rodney Dutt
Shirley Gegenheimer
Orris Howard
Phil Kelley
Tom Lakes
Lou Ann Lindemann
Grace Shirley
Bill Shobe
Susanna Johnson
James Steele
Richard Walls
Nancy White
Andrew Williams
Patty Young

SOPHOMORES

Homer Bledsoe
Ken Buntin

Helen Caine
Woodie Carpenter
Frank Coahran
Averitte Corley
Charles Gerd
Roy Huston
Doris McGuff
Brotan Martin
Mickey Powell
John Prickett
Bob Riggle
Dennis Smith
Jeanette Smith
Dave Welker
Dan Welliever

FRESHMEN

Petty Beene
Louise Brown
Evangelos Coulolias
Dale Deerberg
Bill DeHoff
Jim Drews
Tom Duffin
Dave Dugle
Vivian Edwards
Bill Forbes
Paul Fortner
Normandie Fulson
Richard Green

Zona Hully
Phil Jackson
Douglas King
Gloria King
Lloyd King
Charles Lohman
Bill Mathews
Omer Middleton
Charles Monroe
Phil Nonweiler
Leon Sims
Lahai Sogbandi
Shirley Stanton
Virginia Tharp
Judy Toction
Parviz Varjavand
Gwendolyn Weddington
Therese Williams

SPECIAL STUDENTS

Emily Becker
John DeCaro
Esther Edwards
Charles King
Dorthy Morgan
Richard Shelly
Rosemary Ward
Bob Williams

Freshman Class

OFFICERS

<i>Tyron Inbody</i>	<i>President</i>
<i>Corrine Coble</i>	<i>Secretary</i>
<i>Bill Baldwin</i>	<i>Treasurer</i>
<i>Judy Thompson</i>	<i>Vice-president</i>
<i>Larry Hess</i>	<i>Student Council Representative</i>





Derwood Abernathy
Jerry Achor
Jeanette Acree
Carolyn Amos
Phyllis Anderson



Ray Andrews
Larry Anthony
Stanley Arnold
Bill Ashcraft
Lloyd Ashman



Bill Baldwin
Dewey Balsley
Donna Barkes
Don Barnett
Evelyn Bartley



Harold Baumer
Anna Beeler
Charles Benedict
Shirley Berg
Barbara Berkshire



Sandra Bertel
Janice Biggs
Jim Bitzer
George Boren
Harold Boyd



Reba Boyd
Harold Bramblett
Jim Breeden
Marcia Brenneman
Stanley Brewer



Sandra Brown
Tom Bukowski
Mary Busch
John Cawein
James Clardy

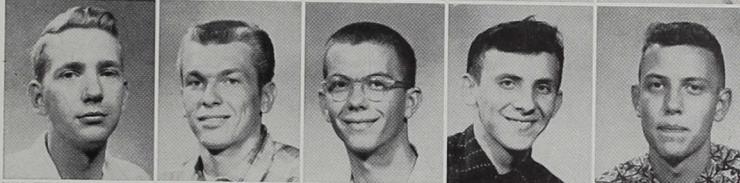


Billie Clark
Larry Clark
Marciadena Clark
Marlin Cline
Bob Coake

Corrine Coble
Betty Coleman
Ron Conner
Joy Cotner
Patsy Crabill



Phil Cradick
Bob Creighton
James Crose
Roger Crosier
Jim Davis



Melvyn Davis
Anna DeFrees
Vernon Denney
Sharon Doty
Bonnie Dulaney



Marvella Ebert
Martha Edmonds
Alice Eversole
Faye Fawcett
Larry Fine



Dick Flosenzier
Jim Foote
Lawrence Fort
Carolyn Foutch
Robert Fox



Doris Garriott
Joy Godbey
Sherrill Goering
John Gordon
Wayne Gossman



Fred Graber
Bette Lou Gray
Marshall Gregory
Judy Haas
Lucy Hague



Billy Hall
Avanella Harriman
Gerald Hartman
Arthur Hash
Dick Heath





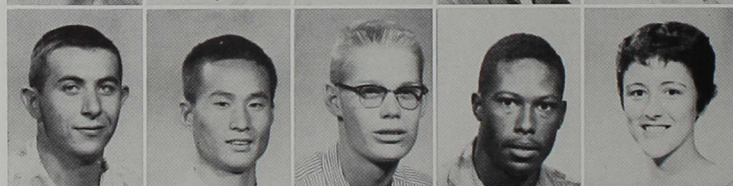
Michael Heckaman
Charles Hedges
Ray Hendrick
Emmett Herr
Larry Hess



Nancy Hilgert
Phyllis Hobbs
John Holmes
Kendall Hottell
Harold Hubbart



Tyron Inbody
Bernadine Jackson
Brenda Jackson
Mikel Jackson
Marilyn Johnson



Nicholas Jordan
Han Mu Kang
Bill Kietzer
Emanuel Kiggins
Julie Kistler



Julius Kleine
Sharon Knackmuhs
Bob Knapp
Marilyn Krohne
Fred Lander



Margaret Landis
Bob Laskowski
Dotte Lester
Jerry Lewis
Eda Lile

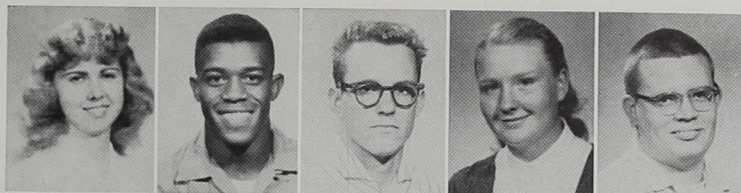


Larry Line
Randall Linhart
Sue Littler
Betty Logan
Emma Lutz



Judy McClure
Linda McCullough
Joe McGee
Don McGruder
Jane McIntire

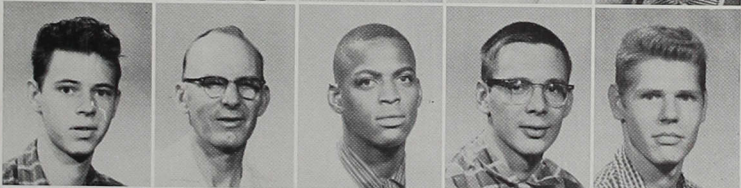
Janet McSherry
Willie Martin
John Merriott
Bonnie Michalek
Larry Miller



Larry Miller
Bob Miller
Judy Mize
Arlysse Montgomery
Louise Moore



Terry Moore
John Morgan
Cecil Motley
Dan Motto
Ken Myers



Nancy Nolte
Richard Nyquist
Linda O'Dell
Richard Padrick
Rex Parish



Ben Parker
Thornton Perkins
Beverly Plummer
Ed Plummer
Joyce Plummer



Bob Plummer
Lester Poe
Janalene Powell
Marjorie Poynter
Bob Primm



Marianne Probst
Tom Ramsey
Frances Reger
Joe Reynolds
Bob Rice



John Richert
Novadean Ridenour
Lance Riggan
Marlene Riley
Charles Roberts





Phil Roberts
Roger Roembke
Larry Rood
Nancy Ross
Bill Roush

Claudette Runion
Dave Russell
Lillian Sage
Charles Sarles
George Searce

Rosalie Schabacker
Nathan Scheib
Fred Schellenberg
Orlin Schilling
Lorene Schini

Jacquelyn Scholfield
Lyle Scifres
Tom Scotten
Marilyn Seitz
Sarah Senour

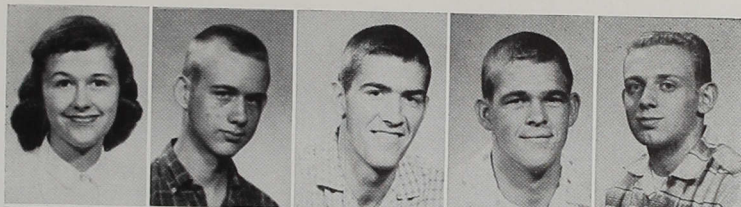
Janet Shafer
James Shaffer
Douglas Sherow
Mary Shierling
Dick Snellenberger

Judy Snider
Trilby Sommers
Vera Sommers
Margaret Springer
Charles Spurgeon

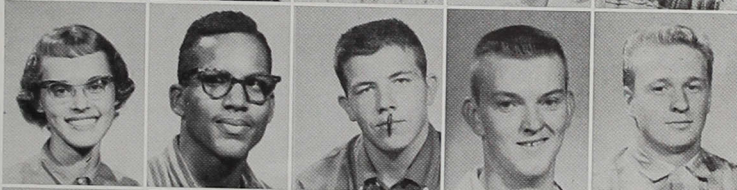
John Stackhouse
Louise Stanton
Deryl Swain
Mary Tarvin
George Taylor

Margaret Taylor
Myron Taylor
Ken Tedaldi
Joan Tedford
John Thompson

Judy Thompson
 Dick Tierney
 Jim Toney
 Benny Townsend
 Charles Underwood



Virginia Valiska
 Alonzo Walker
 Gilbert Walter
 David Wegehoft
 Tom Welch



Waneta Wertz
 Terry Wetherald
 Joan Witten
 Scarlett Whitton
 Lloyd Wiggins



Dan Wilkinson
 Jim Wilson
 John Wilson
 Janice Wininger
 Charles Wise



Linda Wyatt
 Frank Young
 Morris Young
 Phil Zent
 Dave Zurschmeide



Special Students

Mary Geiger
 Jean Shelton



Senior Activities

ADNSON, LEON: "C" Association, Vice-President 4; Track 1,2,3,4; Cross Country 1,2,4; All Conference Track Team 3.

BARNETT, NORMA: SEA Reporter 3, President 4; SCA WUS co-chairman 3; MENC 3,4; IAY Guard 3,4; Choir 1,2,3, Section Leader 4; Majorette 1,3,4; Centralaires 3,4; Girl's Trio 2,3,4; "King and I" 4.

BAUMANN, PHILIP: SCA; Sigma Zeta; Alpha Phi Omega Historian 3; SEA 1,2; American Assoc. of Physics Teachers; American Institute of Physics, American Accounting Assoc.; SAM.

BEASLEY, HAROLD: Sigma Zeta; *Oracle*; SEA; Intramural Sports.

BINNIE, LARRY: SAM 4; Business Club 4.

BORING, EVELYN: Phi Alpha Epsilon; Business Club 1,2,3, Secretary 4; WRA 1,2, Vice-President 3; IAY 3, President 4; SEA 3,4; Class Secretary 4; Whippets 1,2,3,4; Homecoming Court 3; May Queen Court 3.

BUNNELL, SANDRA: Band 1; Philalethea 2,3, Critic 4.

CATES, CAROLYN: SCA WUS co-chairman 3, Student Council Representatives 3, Banquet Committee Co-chairman 4; SEA 3, Treasurer 4; Student Council 2,3; Wilmore Dorm Council 1,2,3; IAY 2, Vice-President 3,4; GMG 1,2,3; Theacallosia 1, Corresponding Secretary 2,4, Hostess 2, President 3, Critic 3, Recording Secretary 4; Philosophy Club 3,4; Choir 2,3, Librarian 4; Who's Who.

CHOI, NUNG HO: Business Club; SAM.

CHUNG, JAE KUCK: Business Club; Pan-Linguist.

CLARK, CUZANNE: Band Treasurer; Indiana Home Economics Assoc. State Treasurer 4; Vesta President 4; SEA 2,4; MENC 1; Booster Club 2; SCA; Extra-Curricular Activities Assoc. 4; WRA Treasurer 4.

COAHARAN, JOHN ALAN: Football 1; Baseball 1,2,3; SCA; CMA; "C" Association; Golf 3.

COLE, MILDRED JEAN: Student Council 2; SCA 1,2,4; Building Fund Campaign 1, Chairman 2; SEA 1, Student Council Representative 2,4; Dorm Council 2; GMG 1,2; Theacallosia 1, Pianist and Judicial Committee 2, Treasurer 4.

COLLINS, RUTHIE: MENC 1,2, Secretary 3,4; Indianapolis Civic Orchestra 1,2,3,4; Philadelphia 3,4; Alpha Psi Omega Associate 4; *Reflector* 2,3,4; String Ensemble 1,2.

COX, LARRY K.: Baseball 1,2,3,4, All Conference 2,3; Student Council 2,3,4; Disciplinary Committee 2,3,4; Art Club 3,4; "C" Association 2,3,4; Chapel and Assembly Committee 2,3.

CURTS, DAVE: SEA; "C" Association Secretary 3; Basketball.

DOLNIAK, DANIEL: SEA: "C" Association; Men's Hall Dorm Council; Buxton Hall Council; Cross Country 1; Football 1,2,3, Co-captain 4; Band 3; Track 2.

DORREL, CHARLES: Football, Track 1,2,3,4; Sigma Zeta; "C" Association Treasurer 4.

DOWLING, DOROTHEA: English Cub 3, Treasurer 4; Pan-Linguist 3,4; French Club Secretary 3; "Hedda Gabler."

DRESSLER, JIM: Band; Orchestra; CMA; Track; Cross Country; Philomusea President 3, Chaplain 4; Philosophy Club; CMA Vice-President.

EASTER, SHERRY: Sigma Zeta; SEA; Philolethea; Majorette; Campus Queen 4.

ENGLEMAN, PATRICIA: Class Secretary 1; Philalethea; English Club; Vesta; GMG; SEA; SCA; *Reflector* staff.

EVANS, RITA: Band 1,2; Secretary 3,4; Vesta 1,2,3,4; MENC Secretary 1,2,3, Vice-President 4; Art Club Secretary 3,4; SEA 2,3,4; SCA 1,2,3,4; Class Treasurer 3.

FILLINGER, PHYLLIS: Art Club 3,4; SCA 4.

GRAY, NORMA JEAN: Philalethea 3,4; NEA 3,4.

GRIGSBY, HAROLD: Sigma Zeta 3,4; Lab Assistant.

GROVES, FRANCES: IAY; Art Club; FTA; Designed the School Flag 3; NEA; SEA; SCA.

HALCOMB, HERMAN: Business Club 1,2,3,4; SAM Student Council Representative 2, Treasurer 3, President 4; *Oracle* and *Reflector* Photographer 4.

HARRISON, JAMES: SCA; SEA.

HAYNES, MARY ALICE: SCA, SEA.

HILLIS, MARY: English Club *Oracle* Associate Editor 3; Phi Alpha Epsilon, SEA 4.

HILLIS, WAYNE: Student Council 2,3; "C" Association; Baseball 1,3.

HIRTH, DAN: SEA; Intramurals; Usher at Baccalaureate 3.

HONG, BYUNG DOO: WUS Co-Chairman 1; Business Club; SAM; Pan-Linguists Club Treasurer 3; Student Council 4; International Relations Club President 3,4; Alpha Phi Omega Treasurer 4.

HOPPE, ROGER: Business Club President 4; SAM; SCA; Golf; Intramurals; "Five Days"; Dorm-Vice-President.

LINCKS, CAROLYN: SEA; *Oracle* Editor 3.

LIPP, PATTI: Vesta 1,2,3; Choir 1,2; SEA 2,3, Secretary 4; SCA 1,2,3,4; Geneva Stunts 2.

LITTLETON, IRA MARSH, JR.: Basketball; Business Club; SAM; Baseball; Track; "C" Association.

LONGENBAUGH, LYNN: Philomusea; Student Council Representative 1, Vice-President 2; Choir; Band; College YF President 2; CMA Treasurer 2.

- MARSHALL, GEORGE: SEA; "C" Association; Basketball 2,3,4; Baseball 1,2,3,4; Class Vice-President 4; Junior Talent Show Chairman; Homecoming Entertainment Chairman; Student Council; Chapel and Assembly Committee; Who's Who.
- MAZE, GRACE: Pan Linguist Student Council Representative, Spanish Division Chairman 3; WRA 2, 3; Philalethea 4.
- MERKEL, RUBY: Choir 1,2,3; English Club Librarian 1,2, Secretary 3,4; May Festival; Madrigal Singers 2; Cherry Blossom Queen Candidate 2; SEA; "King and I."
- MERRITT, MARILYN: Choir 2; Campus Queen Court 4; Philalethea 2, Chorister 3,4; SEA 4; SCA Banquet Chairman 3, Social Chairman 4, Road Race Queen 3; Homecoming Queen 3; Geneva Stunts 2,3.
- MORGAN, AL: Wrestling 1,2,3,4; "C" Association; Class President 3,4; SEA; Extra-Curricular Activities Committee.
- MOYE, LEO: Sigma Zeta; Student Council; "C" Association; Football; Baseball; Senior Class Student Council Representative.
- NAY, CAROLYN NEELY: Choir; Vesta Vice-President 3; WRA President 3; Student Council 3; *Reflector* 3; SEA 3; IAY 3; Class Secretary 3.
- PERKINS, NORVELLE GENE: CMA; SEA; Business Club.
- PETERSON, DELANE: Class Secretary 2; SCA Secretary 2, Treasurer 3; Choir 1; Philalethea 1,2, President 3, Secretary 4; Sigma Zeta 2, Secretary 3,4; GMG 2; IAY 2,3,4; WRA 1, Treasurer 2,3,4; Phi Alpha Epsilon; Botany Lab Assistant 2,3; Geneva Stunts 1,2.
- PEYTON, DALE: Band 1,2, Vice-President 3,4; Orchestra 1,2,3,4; MENC 1,2, President 3,4; Choir 1,2,3; Student Council 2; Music Award 2; International Relations Club 4; Brass Ensembles 2,3,4.
- RANSBURG, NANCY: Class President 1; IAY 1,2,3,4; WRA 1,2,3,4; Whippets 1,2,3,4; Whippet of the Year 3; Student Council Girl-at-large 3; Homecoming Queen 2; Volleyball 1,2,3; Campus Queen Court 4; Cheerleader 2; Chemistry Award 3; Phi Alpha Epsilon; Sigma Zeta Vice-President 4; SEA 3; Vesta Club 1; SEA Geneva Stunts Co-Chairman 2; Who's Who.
- RUCKLE, WANDA: SEA; Class Treasurer 4; Vesta 3.
- SARGENT, DOROTHY: English Club; Pan Linguist Club.
- SHAWA, MARWAN: International Relations Club; Pan Linguist President 1; Alpha Psi Omega Associate; "Squaring The Circle"; "Five Days"; Directed "Over the Tea Cups"; Buxton Dorm President 2; Student Council; Debating Society; WUS Auctioneer 2.
- SHEARER, DONNA: Theacallosia President, Critic, Chorister; SEA; Vesta; Student Council; Secretary of Conference North; Cherry Blossom Candidate; Geneva Stunts; Who's Who; GMG; Choir.
- SHEARER, RICHARD: Student Council; SEA; President Conference North Student Association; Dailey Hall Monitor; Art Club; *Oracle* Artist 3,4; Vice-President Art Club, Alpha Psi Omega Associate.
- SMITH, JACK: Sociology Club; CMA.
- STEVENS, BILL: Football 2,3,4; Wrestling 2,3,4; "C" Association; Class Vice President 3; *Oracle* Sports Editor 3.
- STONE, JANICE: Choir 1, Secretary 2,3, Cabinet 4; Girl's Trio 1,2,3,4; Centralaires 4; SEA 4; GMG 1; Madrigals 2.
- TAYLOR, BURTIS: Business Club, SEA; SCA; SAM.
- TAYLOR, HENRY: Student Council Vice-President 3; Business Club; Disciplinary Committee; SEA; SAM; Who's Who.
- TAYLOR, SHIRLEY: IAY 2,3,4; Business Club 3,4; Theacallosia 3,4; SEA 3,4; Homecoming Queen's Court 3; May Queen Court 3; Student Council Secretary 4; Wilmore Dorm President 4; Road Race Queen 4.
- THAYER, FRED: Football; Track; "C" Association.
- VAN JELGERHUIS, LEE: SAM; Business Club; Chapel and Assembly Committee; Co-Chairman of Homecoming 3.
- VAN TREESE, PAT: SCA 1,2,3,4; NEA 1,2,3,4.
- WARREN, STANLEY: NEA; SEA; SCA; Business Club; Sigma Zeta.
- WHEELER, BILL: SEA; Sigma Zeta; Buxton Hall Secretary-Treasurer 4; Intramural Sports.
- WILBUR, JIM: Football 1,2,3,4; Basketball 1,2,3,4; Track 2,3; Class President 1,2; APO Vice-President 3,4; Student Council; Head Monitor of Men's Hall 3; "C" Association 1,2,3,4; Geneva Stunts.
- WRIGHT, SANDRA: Business Club; SAM Secretary 4; Student Council; Chapel and Assembly Committee 2,3; Dining Hall Committee 2,3; *Campus News and Views* Co-Editor 3,4; *Oracle* Editor 3; Vesta Club Secretary-Treasurer 2; SCA Banquet and WUS committees; Philosophy Club; Geneva Stunts; May Festival; Who's Who.
- YARBROUGH, BILL: SAM 3,4; Vice President "C" Association; Tennis; Business Club 3; Reserve Basketball 1; SAM Homecoming Float Committee 4.
- YORK, HELEN: Theacallosia 1, Chorister 2, Recording Secretary and Censor 3; Treasurer 4; SCA 1, Reporter 2, State President 3, Vice-President 4, State Chairman Legislative Committee 4, Outstanding Girl 2,3; Choir 1,2, Section Leader 3, President 4; Majorette 1,2,3,4; Freshmen Orientation Committee 2; Centralaires 3,4; SCA 1,2,3,4; "Lonesome Luke"; Who's Who.
- ZEIGLER, LINDA: Class Vice-President 2; NEA; Geneva Stunts; Student Council; Intramurals.

These advertisers helped to make our yearbook possible. We appreciate their aid and hope that you will see fit to make use of their goods and services.

Advertising

WOODCROFT PHARMACY

5345 Madison Ave.

ST 6-7872

Indianapolis

MORGAN'S RESTAURANT

Quality Food

Popular Prices

2620 Madison Ave.

24 Hour Service

SCHOOLER'S HARDWARE

SCHOOLER-LYNCH

LAUNDRETTE

Hanna and Shelby

Compliments

of

MARION COUNTY SKELGAS SERVICE, INC.

2753 Brill Road

ST 6-9273

Indianapolis

SANDERS

CLEANERS AND LAUNDRY

3709 Madison Ave.

"SAY IT WITH FLOWERS"

from

MADISON AVE. FLOWER SHOP

2457-59 Madison Ave.

"Order by phone with confidence"

Call

ST 4-4446

Compliments of

WILLIAM WULFF

Brick & Stone Contractor

SEYMOUR, INDIANA

914 East Tipton Street

Phone JA 2-5400

Compliments

of

SOUTHERN CIRCLE

LEETE

INSURANCE AGENCY

ANY FORM OF INSURANCE

Frederick D. Leete, Jr.

Compliments

of

COOK BROTHERS, INC.

General Piping Contractors

PLUMBING — HEATING — VENTILATING AND AIR CONDITIONING

Roehl Pharmacy

"The Campus Drug Store"

4001 Shelby Street

Indianapolis

ST 6-5915

MOBILE GAS

Alexander's Mobile Service Station

WASHING — LUBRICATION
OIL — ACCESSORIES

3980 Shelby

ST 4-0832

The Borden Company

ICE CREAM DIVISION

"All Kinds of Ice Cream"

131 N. Alabama St.

Indianapolis

ME 2-3451

Geo. Buescher and Son

FLORISTS

503 E. Southern Ave.

Flowers for all Occasions

ST 4-2457

University Pastry Shop

Decorated Cakes — Hot Donuts

Pizza Pies

Hours: 7 a.m. to Midnight

4037 Weaver St.

Hanna & Shelby

CONTENTS:

Activities	page 1
Organizations	page 26
Sports	page 48
People	page 68
Advertising	page 104
Index	page 108

Index

Abel, Richard	90	Bowles, Ann Schoonover	78	Coble, Janet Corinne	95, 97
Abernathy, Derwood	96	Boyd, Harold	56, 57, 58, 96	Cole, Mildred Jean	28, 79
Achor, Jerry	45, 47, 96	Boyd, Reba	36, 96	Col'eman, Betty	39, 97
Acree, Jeanette	96	Bramblett, Harold	96	Collins, Ruthie	79
Acton, Phil	51, 90	Brandenburg, Calvin	29, 35, 42, 90	Conner, Ronald	97
Aczinowicz, Michael	90	Brane, Brenda	12, 47, 90	Cotner, Joy	46, 97
Adams, Jerry	90	Breedon, James	96	Cox, Charlene	90
Adnson, Leon	67, 78	Brenneman, Marcia	96	Cox, Larry	38, 65, 79
Alex, Janet	90	Brewer, Gloria	28, 30, 86	Crabill, Patsy Jo	97
Allman, Ada	90	Brewer, Patricia	86	Cradick, Philip	97
Amos, Carolyn	46, 96	Brewer, Stanley	38, 54, 96	Crafton, Richard	90
Anderson, Dolores	90	Brittenham, David	22, 40, 89, 90	Crause, George	86
Anderson, Marvin	29, 46, 90	Brown, Eldon	34, 46, 90, 96	Creighton, Robert	60, 97
Anderson, Phyllis	96	Brown, Howard	41, 90	Cress, Connie	86
Andrews, Donald	90	Brown, Joyce	90	Croise, James	97
Andrews, Larry	32, 34, 90	Brown, Sandra	96	Crosier, Roger	34, 97
Andrews, Raymond	96	Bruce, James	35, 37, 38, 42, 43, 62, 63, 86	Cunningham, Donald	79
Anthony, Larry	96	Bukowski, Thomas	51, 60, 96	Curran, Walter	86
Armstrong, Bob	29	Bunnell, Richard	61, 78	Curtis, Robert	86
Arnold, Stanley	54, 96	Bunnell, Sandra	28, 78	Curts, David	38, 79
Ashcraft, Dane	33, 90	Bunner, Hanna	24, 46, 47, 86	Dahlan, Wadih George	90
Ashcraft, James	38, 51, 90	Bunting, Carolyn Devitt	28, 35, 37, 41, 46, 86	Dale, Sandra	28, 32, 90
Ashcraft, William	51, 96	Bunting, Lawrence	22, 29, 46, 47, 86	Danner, Jane	86
Ashman, Lloyd	96	Burchard, Judith	28, 32, 41, 42, 43, 69, 86	Darbro, Leona	79
Austin, Eugene	38, 86	Burnett, Eugene	90	Darland, Peggy	90
Baldwin, William	31, 35, 95, 96	Busch, Mary	96	Davis, Donald	30, 32, 34, 40, 42, 43, 50, 67, 86
Balsley, Dewey	33, 46, 96	Buskirk, Arlene	37, 39, 85, 86	Davis, James	97
Balsley, Maridee	86	Butterworth, Ronald	86	Davis, Melvyn	33, 97
Barkes, Donna	96	Bymaster, Diana	42, 44, 46, 47, 90	Day, Mary Alice	86
Barnett, Donald	96	Byrum, Sandra	27, 28, 32, 37, 43, 86	DeFrees, Anna	97
Barnett, Norma	32, 45, 46, 47, 78	Caine, Helen	36	DeHart, Joseph	38, 65, 86
Bartley, Therie	96	Campbell, Frederick Jay	78	Delph, David	90
Baumann, Philipe	78	Carlson, Richard	44, 45, 47, 90	DeMoss, Etta Lou	23, 24, 28, 32, 43, 50, 86
Baumer, Harold	45, 96	Carrico, Barbara	36, 39, 40, 78	Denney, Vernon	97
Beals, Patricia	46, 90	Cates, Carolyn	28, 29, 32, 46, 76, 78	Denny, Thomas	90
Beasley, Harold	32, 78	Cawein, John	96	Dice, Ronald	30, 34, 91
Bee'er, Anna	96, 45	Cazier, John	16, 36, 90	Dilk, Leland	38, 51, 91
Beeson, David	90	Chaille, John	90	Dolniak, Daniel	51, 53, 79
Benedict, Charles	45, 96	Chaney, Norman	86	Dorrel, Charles	38, 66, 67, 79
Bennington, Suzette	32, 90	Chansler, Raeburn	16, 37, 43, 44, 90	Doty, Sharon	50, 97
Benson, Calvin	86	Chapell, Daniel	47, 90	Dougherty, Marion	86
Benz, Ronald	40, 41, 43, 44, 86	Chastain, John	67, 90	Dowling, Dorothea	34, 79
Berg, Shirley	96	Choi, Nung-Ho	78	Dressler, James	29, 30, 79
Berkshire, Barbara	46, 96	Chung, Jae Kuck	35, 36, 78, 86	DuBois, Esther	44, 91
Bertel, Sandra	96	Clardy, James	45, 96	Dulaney, Bonnie	17, 23, 46, 97
Biggs, Janice	36, 96	Clark, Billie Sue	96	Dykstra, Marilyn	28, 36, 41, 91
Binnie, Larry	36, 78	Clark, Larry	96	Eas'ey, Karen	37, 43, 46, 86
Bisesi, Donel Vincent	38, 60, 61, 86	Clark, Suzanne	32, 33, 79	Easter, Henry	38, 51, 65, 91
Bitzer, James	31, 96	Clark, Marciadena	96	Easter, Sherry	12, 14, 79
Black, Phyllis	90	Cline, Marlin	34, 35, 96	Ebert, Marcella	97
Blackburn, Joyce	90	Clodfelder, Sharon	33, 39, 90	Edmonds, Martha	97
Bledsoe, Larry	78	Coahran, John Alan	65, 79	Edwards, Philip	91
Bonne, Madeleine	90	Coake, Robert	34, 35, 96	Edwards, Sharon	91
Boren, Howard	47, 96			Eley, Myles	46, 86
Boring, Evelyn Knoop	15, 36, 37, 39, 75, 76, 78				

Emmons, Darlene	36, 45, 86	Haas, Judith	39, 97	Ireland, Ronald	91
England, Gerald	38, 51, 67, 91	Hague, Lucy	45, 46, 97	Isgrigg, Philip	31, 34, 46, 92
Engle, John	79	Halcomb, Herman	36, 43, 80		
Evans, Rita	33, 45, 79	Hall, Betty	28, 91	Jackson, Bernadine	98
Eversole, Alice	39, 45, 97	Hall, Billy	97	Jackson, Brenda	98
		Hardin, Dale	87	Jackson, Carol	92
Fallowfield, George	38, 51, 80	Harner, Dale	38, 55, 80	Jackson, Mikel	38, 51, 62, 63, 98
Farmer, Robert	30, 34, 35, 91	Harriman, Avanelle	97	Jenkins, Hugh	55, 92
Fawcett, Faye	97	Harrison, James	80	Jenson, Anna	32
Federspill, Robert	51	Hart, Roberta	33, 91	Johns, Alice Faye	28, 37, 92
Felten, Donald	38, 57, 66, 67, 86	Hartman, Gerald	60, 97	Johnson, Marilyn	32, 46, 98
Ferguson, Eugene	86	Hartman, Patty	91	Johnston, Shirley	28, 36, 42, 92
Fillinger, Phyllis	80	Hartsock, Thomas	36, 38, 91	Jones, Eddie	60, 92
Fine, Larry	38, 51, 97	Harvey, Charles	91	Jones, Shannon	38, 57, 87
Finfrock, Ronald	80	Harwood, Daniel	67, 91	Jordan, June	81
Florenz, Richard	97	Hash, David	34, 97	Jordan, Nicholas	98
Foot, James	97	Hawkins, Marilyn	29, 34, 47, 87		
Fort, Lawrence	97	Haynes, Mary Smith	80	Kaczorowski, Robert	36, 92
Foutch, Carolyn	28, 97	Head, Allen	87	Kalies, Charles	92
Fox, Robert	97	Head, Margaret	91	Kang, Han Mu	98
France, Carolyn	28, 30, 31, 32, 37, 40, 42, 43, 85, 86	Healey, Paul	91	Kanouse, John	87
France, Don	91	Heath, Richard	97	Kazandzos, Athanasios	36, 92
Franks, Roger	29, 91	Heckaman, Michael	98	Keefe, Virgil	34, 35, 76, 81
Frazier, Margaret	31, 33, 86	Heckert, David	46, 91	Kellogg, Ivan	29, 87
Frey, Robert	29, 30, 35, 42, 86	Hedges, Charles	38, 51, 98	Key, Donna	28, 30, 87
Fuller, Richard	86	Hegg, James	80	Kidder, Richard	92
		Heller, Peter	87	Kietzer, William	46, 98
Gaddie, Sally Ann	39, 86	Hendrick, Raymond	98	Kiggins, James	54, 98
Garrett, Margaret	91	Henkels, Ingrid	34, 44, 91	Kim, Jung Hi	35, 36, 92
Garriott, Doris	39, 45, 47, 97	Herdman, William	87	Kimpling, Nancy	92
Garrison, Edna	43, 46, 86	Herr, Emmett	57, 98	King, Thomas	81
Geier, Carolyn	86	Herron, Forrest	80	Kirk, Joseph	92
Geiger, Mary	101	Hess, Larry	34, 40, 95, 98	Kirkham, Linda	7, 23, 30, 32, 36, 40, 92
Gentry, Carsey	91	Hicks, Marilyn	45, 47, 91	Kistler, Julie	33, 98
George, Danny	36, 91	Hilgert, Nancy	98	Kistler, Russell	32, 43, 87
Gerdt, Charles	36	Hillis, Mary Belles	80	Kleine, Jay	98
Gibson, Peggy	28, 32, 37, 40, 42, 87	Hillis, Wayne	80	Klinger, Phil	41, 42, 65, 92
Gira, Valerie	91	Hirth, Daniel	81	Knackmuhs, Sharon	98
Glottelty, James	91	Hobbs, Phyllis	98	Knapp, Robert	98
Goba, George	35, 87	Holloway, Janis	28, 30, 37, 91	Knox, Kenneth	87
Godbey, Joy	97	Holmes, John	51, 98	Koch, Theodore	55, 92
Goeing, Sherrill	28, 46, 97	Hong, Byung Doo	37, 77, 81	Kortepeter, Louise	87
Gordon, John	97	Hoppes, Roger	36, 61, 81	Krohne, Marilyn	43, 98
Goss, Gordon	50, 91	Horner, Linda	33, 42, 91	Kruger, Hattie Ann	92
Goss, Marshall	32, 38, 54, 67, 87	Hottell, Leroy	36, 98	Kruse, William	65, 92
Gossman, Melvin	36, 85, 87	Howard, Ray	38, 65, 91		
Gossman, Wayne	36, 97	Howard, Ron	40, 87	Lacey, Bert	65, 92
Graber, Fred	97	Howard, William	29, 41, 85, 87	Lammert, Elsie	87
Graham, Burman	87	Howe, Robert	81	Lander, Fred	51, 98
Graham, Mary Jo	91	Howland, John	36, 87	Landis, Margaret	98
Gray, Arthur	91	Hubbard, Harold	98	Lane, Stephen	51, 92
Gray, Bette	97	Huffman, Edgar	45, 91	Lansinger, James	81
Gray, George	80	Huffman, Mary	45	Laskowski, Robert	38, 51, 98
Gray, Norma Jean	80	Hummel, Arleen	28, 30, 37, 91	Lausch, Eugene	29, 35, 41, 54, 66, 67, 87
Green, Earl	91	Hunsucker, Glenn	91	Lee, Joyce	92
Gregory, Marshall	97	Hurrie, Louis	38, 51, 62, 63, 87	Lester, Dorothy	30, 35, 42, 98
Griffin, Edith Garrison	86	Hyten, David	91	Lewellen, John	81
Griffin, Ron	87			Lewis, Jerry	56, 58, 59, 98
Grigsby, Harold	80				
Grimes, James	34, 87	Ikerd, Gladys	33, 36, 91		
Groves, Frances	33, 80	Inbody, Tyron	34, 95, 98		

Lile, Eda	98
Lincks, Carolyn	81
Lindley, Edward	45, 92
Line, Lawrence	98
Linhart, Randall	98
Linton, Madeline	87
Lipp, Patricia	32, 81
Little, Sue	98
Loer, Thomas	17, 89, 92
Logan, Betty	30, 39, 98
Longenbaugh, Lynn	81
Lowry, Joseph	43, 49, 87
Lutz, Emma	98

McAhren, Vaun	29, 34, 38, 54, 67, 92
McCarty, Victor	29, 92
McClure, Judith	46, 98
McComb, Carol	28, 41, 87
McCombs, Rose	30, 92
McCormick, Thomas	20, 46, 47, 92
McCullough, Linda	36, 98
McCullough, Wiley	38, 65, 87
McDonald, Ruth	87
McGee, Joe	51, 98
McGruder, Donald	98
McGuire, Mike	51
McIntire, Jane	98
McKinney, Jack	38, 55, 85, 87
McSherry, Janet	46, 47, 99
McVey, Robert	92
Mace, Dale	33, 38, 54
Maguire, Ralph	51, 67, 92
Maish, David	29, 34, 92
Marshall, George	38, 58, 65, 75, 77, 81

Martin, Willie	38, 51, 62, 63, 99
Matchett, Jane Gilley	81
Mattingly, David	92
Maze, Grace	28, 82
Merkel, Ruby	30, 32, 82
Merritt, John	38, 51, 99
Merritt, Delmar	60, 92
Merritt, Marilyn	15, 32, 41, 77, 82
Michalek, Bonnie	99
Milhaus, Michael	65, 92
Milhouse, Pauline	28, 37, 42, 89, 92
Miller, Barbara	87
Miller, Frances	33, 45, 92
Miller, Jack	42, 87
Miller, Larry H.	99
Miller, Larry W.	34, 35, 99
Miller, Robert	99
Mitchell, Milton	60, 87
Mitchell, Ronald	92
Mize, Judith	99
Moeller, William	36, 92
Montgomery, Arlyse	42, 46, 99
Montgomery, Gordon	43, 87
Moore, Edward	31, 38, 40, 65, 87
Moore, Louie	99
Moore, Terry	99

Morgan, Allen	38, 62, 75, 82
Morgan, John	99
Motley, Cecil	99
Motto, Daniel	35, 99
Moye, Leo	51, 53, 65, 82
Myers, Kenneth	46, 99

Nading, Ivan	36, 87
Nay, Carolyn	39, 82
Nay, Gerald	36, 92
Nolte, Nancy	99
Nonweiler, Phil	38, 55
Norris, Mary Ann	33, 45, 92
Nyers, James	87
Nyquist, Richard	51, 99

O'Dell, Linda	20, 47, 99
Osborne, Sandra	28, 92
Otolski, Robert	38, 51, 61, 87
Overholtz, Arlene	32, 87
Owens, Dale	93

Padrick, Richard	99
Parish, Rex	99
Parker, Alfred	45, 99
Partain, Neal	88
Patrick, Rose	28, 37, 42, 93
Patterson, Richard	88
Pearcy, Michael	93
Pence, Marlene	88
Perkins, Gene	36, 82
Perkins, Thornton	60, 99
Peterson, Delane	28, 37, 82
Peterson, James	88
Peyton, Dale	45, 46, 47, 82
Pike, David	93
Pinnell, Edward	93
Plummer, Beverly	36, 99
Plummer, Edward	99
Plummer, Joyce	42, 99
Plummer, Robert	46, 99
Poe, Lester	99
Pollard, Richard	88
Poole, Donald	38, 65, 88
Porter, Audrey	28, 30, 32, 37, 88
Potts, Jean Ann	33, 34, 88
Powell, Janalene	99
Powell, Michael	38
Poynter, Marjorie	99
Primm, Robert	99
Printz, Charles	93
Probst, Marianne	99
Propst, Ivan	67, 93
Purichia, Carol	38, 51, 93

Quinn, Mike	93
-------------------	----

Ramsey, James	62, 63, 99
Ransburg, Nancy Tiano	15, 42, 44, 77, 82
Rathbun, David	16, 18, 93

Ray, Kenneth	93
Reed, Thomas	82
Reger, Frances	35, 45, 99
Repp, Sarah	30, 31, 32, 40, 43, 88
Reynolds, Joseph	33, 99
Rice, Robert	99
Richert, John	99
Ridenour, Novadean	32, 99
Riggin, Lance	99
Riley, Marlene	99
Rippy, Frances	88
Roberts, Charles	99
Roberts, Phillip	100
Roberts, Sylvia	93
Robertson, Clifford	88
Roembke, Roger	100
Roessler, David	88
Rood, Larry	100
Ross, Nancy	100
Rossmann, Fred	36, 88
Roush, William	100
Rucker, Ronald	51, 93
Rucker, Wanda	43, 88
Ruckle, Wanda	32, 75, 82
Runion, Claudette	100
Russell, David	100
St. Clair, Doreen	39, 93
St. Clair, Hagar	38, 65, 88
Sage, Lillian	100
Sargent, Dorothy	82
Sarles, Charles	100
Sarles, Orrin	32, 43, 88
Seacore, George	100
Schabacker, Rosalie	33, 100
Scheib, Nathan	100
Schellenberg, Walter	100
Schilling, Albert	100
Schini, Lorene	42, 100
Scholfeld, Jacquelyn	33, 100
Schoonover, Janet	93
Schultz, William	34, 93
Schuman, Charles	44, 67, 88
Scifres, Lyle	46, 100
Scotten, Thomas	100
Seitz, Marilyn	46, 100
Self, Billy	93
Senour, Sarah	36, 100
Shade, Ellsworth	82
Shafer, Janet	45, 46, 100
Shaffer, James	100
Shanks, Donald	93
Shannon, William	40, 88
Shaw, Artie	51, 88
Shawa, Marwan	82
Shearer, Donna Rosenberger	28, 83
Shearer, Richard	33, 43, 100
Shelton, Jean	101
Sherow, Douglas	100
Shierling, Mary	46, 47, 100
Shierling, Naomi Ruth	46, 88
Shircliff, Mickie	58, 89, 93

Shobe, William	23, 38, 54, 62, 63, 66, 67	Thompson, John B.	18, 41, 44, 45, 88	Wertz, Waneta	46, 101
Shortridge, Dorothy	11, 30, 88	Thompson, John C.	100	Wetherald, Terry	51, 60, 101
Showalter, Linda	41, 42, 44, 89, 93	Thompson, Judith	95, 101	Whalen, Alan	94
Simon, Beverly	30, 43, 88	Thompson, Ted	83	Wheat, Stanley Lewis	34, 44, 94
Sipes, Gerald	93	Throm, Rose	28, 39, 45, 93	Wheeler, Phyllis	23, 30, 37, 40, 42, 44, 94
Smith, Jack	30, 83	Thurston, Jerry	36, 88	Wheeler, William	32, 44, 84
Smith, Mabel	88	Tierney, Richard	101	White, Carolyn	28, 88
Smith, Wilfred	36	Tindall, Jack	55, 59, 93	Whitten, Joan	101
Snellenberger, Richard	46, 100	Tindall, Jim	55, 59, 93	Whitton, Scarlett	101
Snider, Judith	100	Tobias, Donald	83	Wickliff, Norman	88
Sommers, Trilby	100	Toney, James	60, 101	Wiggins, Lloyd	101
Sommers, Vera	100	Townsend, Benny	60, 101	Wilbur, James	38, 51, 53, 56, 59, 67, 84
Spears, John	88	Trump, Harold	34, 83	Wiley, James	59, 94
Speedy, Ronald	93	Tullis, Eugene	88	Wilkinson, Daniel	101
Speer, Curtis	38, 88	Turner, Martha	46, 93	Wilkinson, Marytrances	94
Springer, Margaret	36, 100	Umbach, Richard	93	Williams, Edward	88
Springer, Thomas	38, 65, 93	Underwood, Charles	36, 101	Wilmoth, Shirlee	34, 42, 94
Spurgeon, Charles	58, 100	Vail, Frances	83	Wilson, James E.	101
Stackhouse, John	100	Valiska, Virginia	46, 101	Wilson, James R.	64, 65, 94
Stanton, Rosalie	16, 45, 100	Van Ausdal, Barbara	93	Wilson, John	101
Starkey, Richard	93	VanderBaan, Betty	93	Wininger, Edna	101
Stevens, Thelma Jean	93	Van Jelgerhuis, Lee	36, 83	Winton, James	88
Stevens, William	51, 52, 53, 62, 63, 83	Van Treese, Patricia	84	Winzenread, Gerold	94
Stivers, Raymond	93	Van Wagner, June	39, 84	Wise, Charles	18, 101
Stone, Janice	46, 47, 83	Varjavand, Parviz	35	Wright, Sandra	33, 36, 42, 76, 84
Stotts, William	60, 93	Vuillemot, Robert	38, 65, 88	Wulf, Elsie	39, 94
Stough, Kenneth	93	Waddell, Evelyn	93	Wyatt, Linda	101
Strader, Philip	51, 53, 83	Waggoner, Judith	39, 93	Yacu, Rauf	35, 36, 37, 88
Stucker, Robert	88	Walker, Alonzo	101	Yarbrough, William	36, 38, 84
Swain, Deryl	60, 100	Walker, Carl	94	York, Helen	28, 32, 45, 46, 47, 76, 84
Syphers, David	93	Walter, Gilbert	38, 51, 101	Young, David	29, 42, 76, 84
Targgart, Miriam	46, 47, 93	Warner, Dallas	94	Young, Franklin	35, 101
Tarvin, Mary	46, 100	Warren, Stanley	84	Young, Jacqueline	47, 94
Taylor, Burtis	83	Waters, Ronald	94	Young, John	32, 84
Taylor, George	100	Watkins, Mary	30, 31, 33, 88	Young, Morris	101
Taylor, Henry	83	Watson, Donald	84	Young, Patty Ann	12, 50
Taylor, Margaret	100	Wagehoft, David	101	Zent, Philip	45, 101
Taylor, Myron	100	Welch, Thomas	38, 51, 101	Ziegler, Linda	84
Taylor, Shirley	15, 23, 28, 36, 37, 40, 83	Welliever, Daniel	38, 62, 63	Zielinski, Daniel	88
Tedaldi, Kenneth	100	Welling, Robert	46, 47, 88	Zurschmeide, David	101
Tedford, Joan	100	Wentz, James	11, 29, 34, 41, 88		
Thayer, Fred	38, 51, 53, 83	Werkmeister, Robert	67, 94		
Thomas, Loren	30, 38, 54, 67, 93				

Autographs

Acknowledgements

As the editor of the 1959 *Oracle*, I would like to extend my thanks to the students and faculty who have made this book possible. Through their co-operation and hard work the 1959 *Oracle* became a reality.

Credit goes to the Capital Engraving Company of Springfield, Illinois, and their representative, Mr. Richard Brier; the Graessle-Mercer Company of Seymour, Indiana, for printing the book; and to Mr. Jack K. Bundy of the S. K. Smith Company for the covers.

Credit goes also to Jim Bruce and Herman Halcomb, ICC students; Mr. Brier, Bill Ehrich, and Nash Studios of Greenwood, Indiana, who did the photography.

And last but not least to the 1959 *Oracle* staff, I give acknowledgement:

<i>Sarah Repp</i>	<i>Editor-in-Chief</i>
<i>Etta Lou DeMoss</i>	<i>Associate Editor</i>
<i>Raeburn Chansler</i>	<i>Assistant Editor</i>
<i>Beverly Simon</i>	<i>Copy</i>
<i>Sandy Byrum</i>	<i>Organizations</i>
<i>Joe Lowry</i>	<i>Sports</i>
<i>Judy Burchard</i>	<i>Class</i>
<i>Pete Heller, Carolyn France,</i> <i>Edna Garrison, Carolyn Geier</i>	<i>Advertising</i>
<i>Dr. Keller, Parker Jordan,</i> <i>Professor Boyce</i>	<i>Faculty Advisors</i>
<i>Marilyn Krohne</i>	<i>Typist</i>
<i>Richard Shearer</i>	<i>Artist</i>

