



The ORACLE

1931

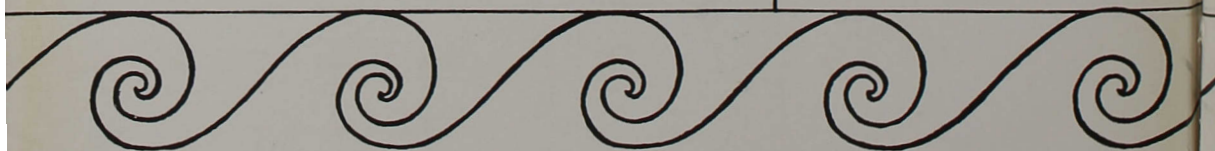


EX LIBRIS





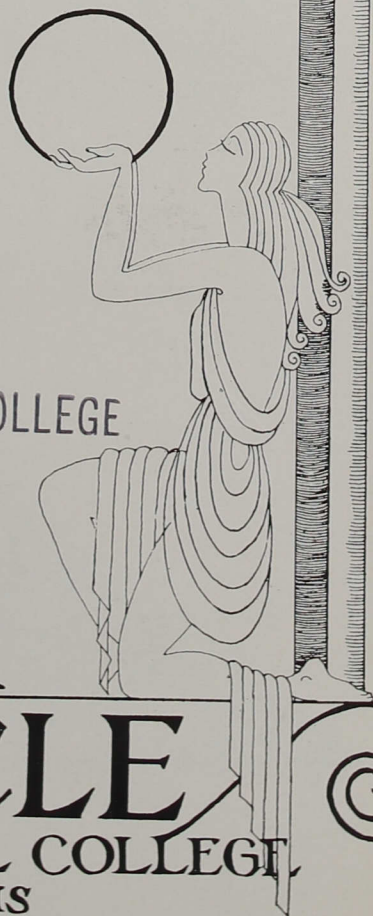
PUBLISHED
BY THE
CLASSES OF
1931
AND
1932



INDIANA CENTRAL COLLEGE
LIBRARY

The
1931

ORACLE
of INDIANA CENTRAL COLLEGE
INDIANAPOLIS



PREFACE

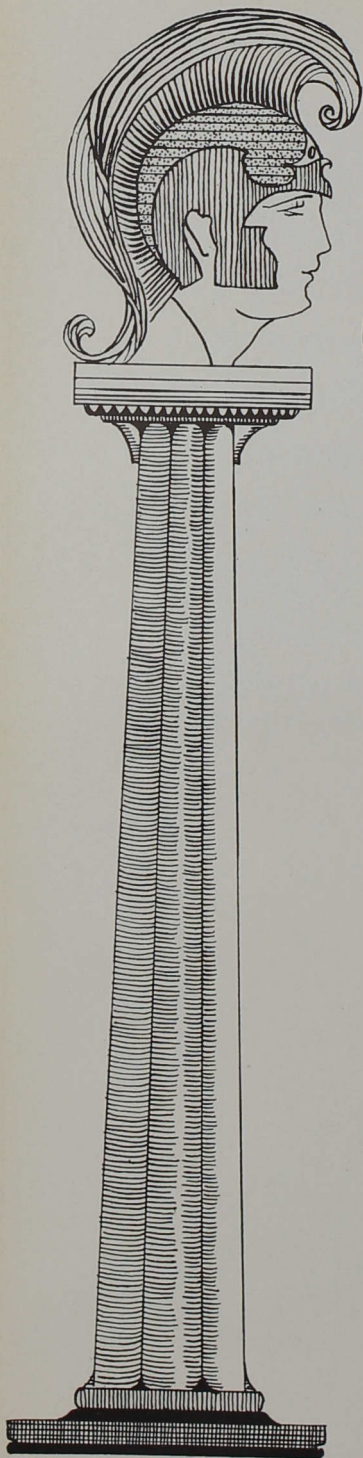
A goat-herder of Mt. Parnassus once observed that his goats reacted in a very strange manner to a peculiar vapor arising from a chasm in the mountain. Induced to test it himself, he inhaled the air and was likewise affected. The inhabitants of the surrounding country, unable to explain the circumstance, considered the ravings to which he gave utterance as being prophetic.



The news spread rapidly and soon a temple was erected over the chasm. Pythia was appointed priestess of the Oracle and crowned with laurels. Seated upon a tripod in the midst of the rising vapors which she inhaled, her strange words were thought to be of divine inspiration and were interpreted by priests as messages to those who came to consult the Oracle.

And as that Oracle of old brought its messages then, may this Oracle of 1931, when consulted through the passing years, bring forth its message of happy memories.





CHAPTERS

I COLLEGE

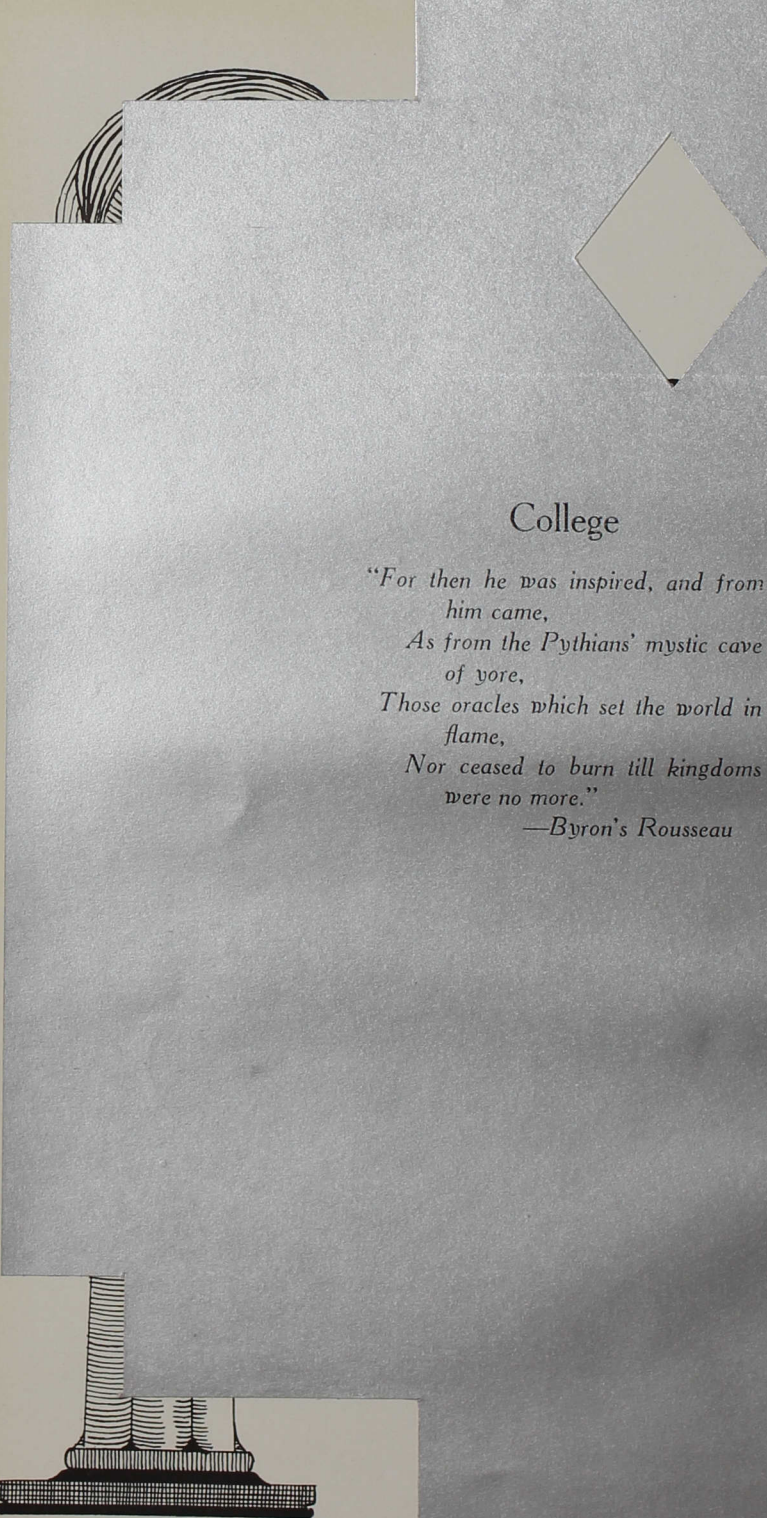
II ATHLETICS

III ACTIVITIES

IV FEATURES



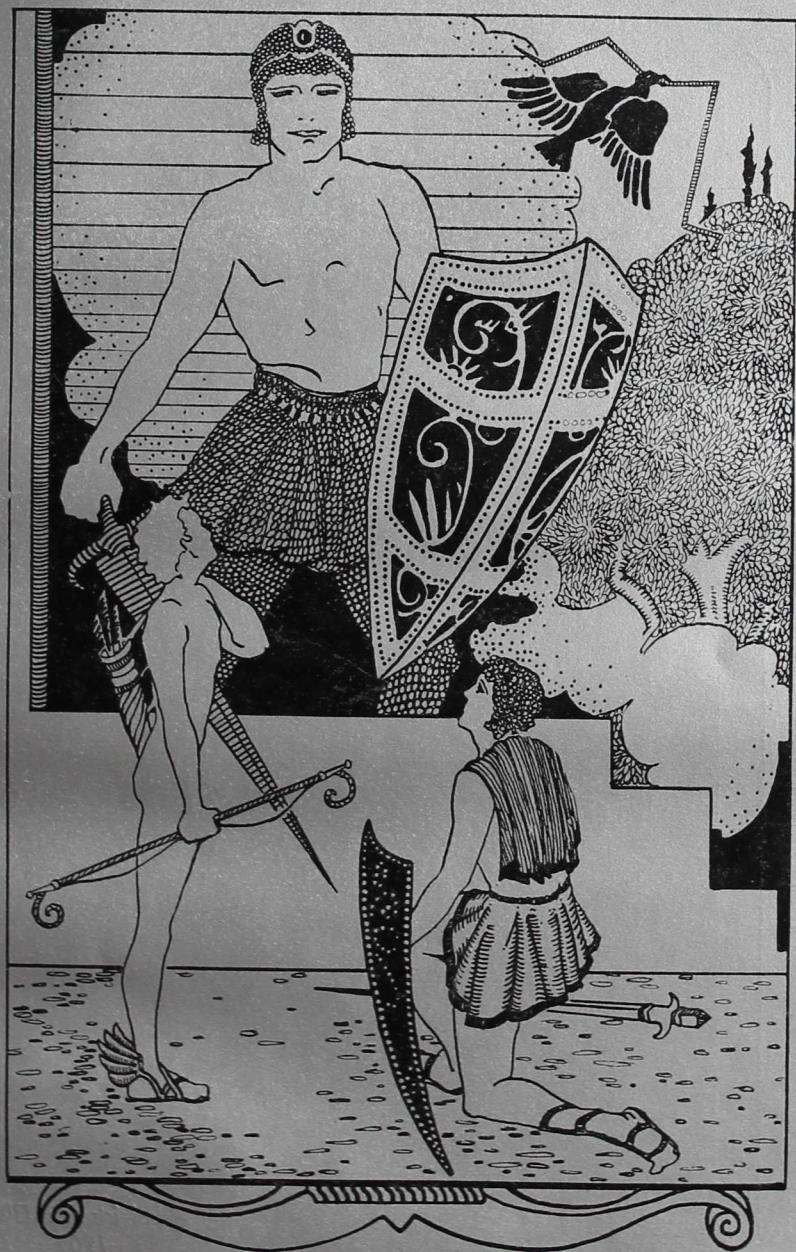
COLLEGE



College

*"For then he was inspired, and from
him came,
As from the Pythians' mystic cave
of yore,
Those oracles which set the world in
flame,
Nor ceased to burn till kingdoms
were no more."*

—Byron's Rousseau



COLLEGE



*Administration Bldg.
1905*

ADMINISTRATION

The administration of Indiana Central College, as it relates to curriculum, schedules, faculty, and student organization, discipline, and high scholastic endeavor, is comparatively simple and successful as long as the faculty and student body hold steadily to the high purposes that have characterized the spirit of this college. The year 1930-1931 is no exception in this regard.

In financial administration the year has been very difficult. The severe financial and industrial depression has seriously hindered the financial support of the college and prevented the attendance of many students who otherwise would have been enrolled. Unfortunately, too, the requirement of the State Board of Education that \$200,000 of endowment be raised during the year was impossible because of the panic conditions, but it was accepted by many as a threat against the accreditation of the college and made the problem more difficult.

However, through the giving of the members of the I. C. C. Fellowship which was organized last commencement to make monthly contributions and through the amounts contributed on I. C. C. Day, February 8, together with other payments on pledges, the income for the year will practically balance the expense. Rev. B. S. McNeely, Rev. A. B. Arford, and Professor D. H. Gilliatt have done very valuable field work during the year. The accreditation has been extended and the college authorities have adopted a plan of larger and more direct cooperation of the church conferences in providing funds and students in the future. While this is being done it is also planned to enlist financial support for the college from men and women of Indianapolis.

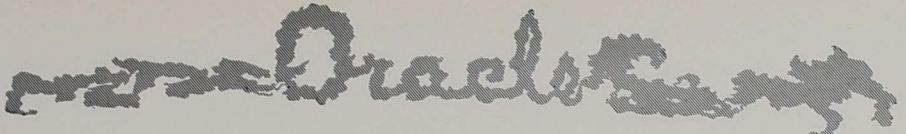
I. J. GOOD,
President

Orators



I. J. GOOD, A.B.; A.M.; L.L.D.
President





Faculty

Virginia Cravens, *Dean of Women*

W. Earl Stoneburner, *Sponsor of Men*

NOTE—The members of the faculty on the following pages, by inadvertence, are not strictly in the order of their seniority.



Faculty

John A. Cummins

Philosophy

A. B., 1887
A. M., 1890
Ph. D., 1911



Alvin H. M.
Stonecipher

Ancient Languages

A. B., 1913
A. M., 1914
Ph. D., 1917

Durward L. Eaton

Physics

B. S., 1907
A. M., 1908
Ph. D., 1927



Lyle J. Michael

Chemistry

B. S., 1919
M. S., 1920
Ph. D., 1929

William P. Morgan
Zoology and Physiology

A. B., 1919
A. M., 1922
Ph. D., 1926



D. Harvey Gilliatt
Religious Education

A. B., 1920
B. D., 1923
A. M., 1930

Floyd E. Beghtel

Botany

A. B., 1912
A. M., 1917
Ph. D., 1924



John J. Haramy

Political Science

A. B., 1918
LL. B., 1924
A. M., 1926



Drach

Deleth E. Weidler

Education

A. B., 1909

A. M., 1922



Mrs. Jane J. Burroughs

Head of Music Dept.

Voice

B. Mus., 1922

Student of

Theodore Harrison

Isadore Luckstone

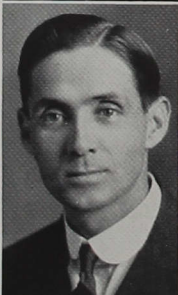
Virginia Cravens

Dean of Women

English

A. B., 1910

Completing A. M.



Loren S. Noblitt

Bible

B. Sc., 1918

M. Sc., 1924

Harry R. Mathias

Mathematics

A. B., 1923

A. M., 1925



Leona E. Stuart

Home Economics

B. S., 1916

A. B., 1921

A. M., 1928

Sibyl Weaver

English

A. B., 1916

A. M., 1918



W. Earl Stoneburner

Education

Sponsor of Men

A. B., 1924

A. M., 1927



Orchestra

Leora Weimar
Public Speaking
A. B., 1921
A. M., 1929



Harry C. Good
Physical Education
Athletic Coach
A. B., 1925
Coaching School
1927-28

Helen R. Smith
Ass't Education
B. S., 1927



Florence Holloway
Spanish
A. B., 1924
A. M., 1925

William H. Fox
Violin
B. Mus., 1927
A. M., 1930



Grace Hutchings
Piano
Student of
Ernesto Conselo,
E. Robert Schmitz,
Camille Decreus,
I. Phillipp.

Maxine S. Clark
Latin
A. B., 1923



Ethel P. Gilliatt
Voice and Piano
B. Mus., 1928
Student of Zerline
Muhlman Metzger

Maribel Wineinger
Art
A. B., 1925



Clarence Bookout
Accountant
A. B., 1929



Drach

Lucille Turner

English

A. B., 1929

A. M., 1930



Selma S. Searcy

Public School Music

B. Mus., 1928

Student of
Edward Nell

Burke H. Miller
Supervised Teaching

A. B., 1926

A. M., 1931

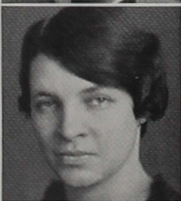


Donald Carmony

History

A. B., 1929

A. Bash Arford
Field Secretary



Marguerite H. Anderson

Librarian

A. B., 1924

B. S., 1930

Rev. G. L. Stine
College Pastor
B. D., 1908



Sheldon Key

Journalism

A. B., 1929

Evan Kek
Ass't Treasurer
A. B., 1930



Rev. B. S. McNeely

Field Secretary



Anna Dale Kek

Registrar



Orchestra



First row, Bessie Osgood, Glenn Ramsey, Lowell Lee, and Edgar Gault, chemistry; Helen Dunham, home economics.

Second row, Eunice Martin, Julia Good, Frances Wallace, Lucille Cook, and Edna Dickinson, music.

Third row, Dorcas Petty, zoology; Ernest LeRoy, physiology; Nila Daggy, Botany; and Ralph Hiatt, Arville Gibson, physics. Assistants not pictured, Paul Campbell, zoology; Donald Klopp, Victor Stech, botany; and Maurice Shadley, music.

STUDENT ASSISTANTS

Student assistants of the different departments are selected from those majoring in the subjects for which they are chosen. A keen interest in the work and a high scholastic standing are requisites of the position, for which not only additional credit is given but from which a large amount of experience is derived that will prove valuable in teaching.

In the science departments, it is the duty of the assistants to prepare laboratory experiments, handle the supplies, and type written matter to be used in the class work.

The music assistants have charge of the music store and practice rooms and sometimes teach classes. Miss Good had classes in harmony and in theory during the first semester.



HOMER ACHOR

Minister

622 Union Ave., Anderson, Ind.

History, English, Journalism

"The thing to be seized is that he had flint and iron in him, that he had character."

Bud is one of the most dependable fellows in school—conscientious, very intelligent and a capacity for leadership, together with a boyish smile and a zest for friendship. He has analyzed life and worked out his own philosophies.

Editor Oracle (4), Debate (3), Zetagea (1, 2, 3, Acting President 4), Reflector Staff (1, 2, 3), Cheer Leader (2), Press Club (1, 2, 3), Y. M. C. A. Cabinet (3).



CAROL BECHTOLT

Teacher

120 West Ave., Reedsburg, Wis.

Piano, English

"If you get simple beauty and naught else you get about the best thing God invents."

Few persons know Carol intimately—she has a rather dauntless poise and efficiency as well as her refinement and charm.

Girl's Glee Club (1, 2, 3), College Choir (1, 2, 3), Theatlosia (1, 2, President 3), Orchestra (3). Completed Course in Three Years.



GEORGE COLDREN

Business

916 East Taylor St., Kokomo, Ind.

Commerce, Psychology

"Principle is ever my motto, not expediency."

Red is doomed to be a business man, and we look forward to the day when we can visit him in his luxurious but conservatively furnished office and hear of his success. His ability coupled with a pleasant and likeable disposition "condemn" him to accomplishment.

Science Club (4), Tennis (1, 2), Track (1).



VIRGINIA AEPPLI

Teacher

5042 North Lawndale Ave., Chicago, Ill.

Voice, Public School Music, English

"Why do I remember you as a singing bird?"

A beautiful voice, a graciousness, and the happiness of songbirds. Virginia would make a charming hostess.

Y. W. C. A. Cabinet (2, 3), Girl's Glee Club (2, 4, President 3), College Choir (2, 3, President 4), Oracle Staff (3), Philalethea (2, 3, President 4).



Oracle

MARGARET BERDEL

1631 Lawrence Ave., Indianapolis

Art, English

"Bliss was in it that Dawn to be alive,
But to be young was very heaven."

Eagerly generous and sweet, Peg "loves life and friends
and joy." Few people ever know that they worry her.

Orchestra (3), Oracle Staff (3, 4).

Teacher



CHARLES BORCHERS

1325 Lawrence Ave., Indianapolis

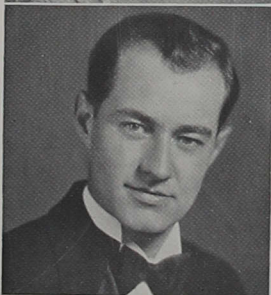
Social Science, Biology

"They that govern the most make the least noise."

Reserved, intelligent and very sane, Charles thinks much
and says little. Once a friend always a friend.

Zetagahea (2, 3, President 4), Science Club (4).

Teacher



BEATRICE CASTERLINE

1722 Andrew St., Fort Wayne, Ind.

Home Economics, English

With "the gentleness of twilight, and the virtues of
the saints."

There is another worldliness about Bea that seems to
set her apart from the rest of us. It is almost disconcerting
to suddenly find her human. Conscientious and very serious.

Y. W. C. A. Cabinet (4), Home Economics (3), Phila-
lethea (1, 2, 3, 4).

Teacher



LEONARD BAILEY

Churubusco, Ind.

Biology

"I shall pass this way but once."

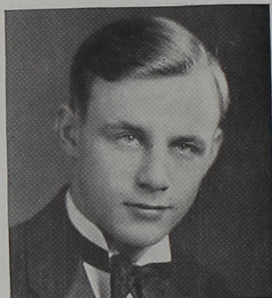
With jests and a happy-go-lucky bravado, Abe is care-
lessly indifferent, yet we know that his is an unusually keen
intellect—in spite of that laughing take-or-give, drink-and-
live, beg-or-borrow attitude.

Science Club (2), "C" Association (1, 2, 3, 4), Tennis
(1, 2), Track (2), Basketball (2, 3).

Teacher



Oracles



ROBERT DURHAM

Whiteland, Ind.

Insurance

Public School Music, Violin

"My only books were women's looks, and folly's all they've taught me."

There is a Bob of irresponsible frivolity, vivacity, and arrogance, and there is a Bob of artistic sensitiveness, sincere and serious.

Y. M. C. A. Cabinet (3, 4), Oracle Staff (4), Philomusea (1, 2, 3, President 4), "C" Association (3, 4).



HAZEL FOUTCH

Leipsic, Ind.

Teacher

Mathematics, English

"There is no wisdom like frankness."

A little chatterbox, with brains, an artistic temperament, and the gift of a repertoire. Hazel secretly desires sophistication. She's extremely frank and independent, but, believe it or not, we have seen her wistful.

Y. W. C. A. Cabinet (2, 3), Debate (3), Philalethea (1, 2, 3, President 4), Oracle Staff (3), Science Club (2, 3, 4).



ARVILLE GIBSON

Corydon, Ind.

Teacher

Mathematics, Physics

"Be resolutely and faithfully what you are."

"Hoot" is always willing to do those little things for which one gets small praise, but which have to be done. He is quite good humored and friendly—doubtless never had an enemy.

Men's Glee Club (2), College Choir (3, 4), Philomusea (3, 4), Science Club (2, 4, President 3).



HELEN DUNHAM

R. R. 1, Anderson, Ind.

Teacher

Home Economics, Biology

"Part of me is Martha
Troubled with many things;
But part of me is Mary,
With lovely shining wings."

There is a wistfulness and a gentle serenity about Helen that seems to fix her whole life as a consecration to her friends and her ideals. Laughingly sympathetic and home economical, she will make some man an excellent wife.

Home Economics Club (1, 2, 3, 4), Philalethea (1, 2, 3, 4), Science Club (1, 2, 3, 4).



Oracle

HELEN FORNEY

Etna Green, Ind.

Religious Education

English, Biology

"I love tranquil solitude
And such society,
As is quiet, wise, and good."

Helen seems older than the rest of us. We sometimes have a feeling that she cares not to engage in our foolishness. Always doing little kindnesses, and being sympathetic to others, she is loved in spite of her four walls, perchance even because of them.

Y. W. C. A. Cabinet (3), Press Club (1, 2, 3, 4), Philalethea (1, 2, 3, 4), Student Volunteers (President 4).



ALBERT FINDLEY

Muncie, Ind.

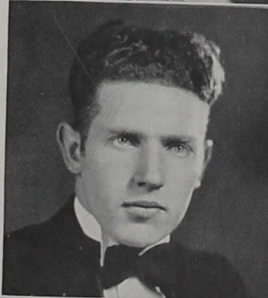
Chemist

Chemistry, English

"Talk to him of Jacob's ladder, and he would ask the number of the steps."

Quiet, a good friend, with a droll sense of humor, Albert is a calm steadiness of strength and sincerity.

Philomusea (3, 4), Oracle Staff (4), Booster Club (2, 3, President 4), "C" Association (3, 4), Baseball (3, 4).



NILA DAGGY

Rochester, Ind.

Teacher

English

"I would rather be a fool
Living in my Paradise,
Than the leader of a school,
Sadly sane and weary wise."

With a poetic sensibility that only her close friends see, Nila cares about dandelion gold and summer skies, but she usually hides it with a business-like practicability and industry.

Y. W. C. A. Cabinet (4), Girl's Glee Club (3, 4), Dramatic Club (4), Theacallosia (2, 3, President 4). Completed work in three years.



LOWELL GOOD

4202 Otterbein Ave., Indianapolis

Engineering

Physics

"Let us have faith that right makes might; and in that faith let us to the end dare to do our duty as we understand it."

Because of the barriers to surmount in being the President's son, Lowell is somehow held responsible to be twice as good as everyone else. Boyish and friendly, the best of him under the surface. Lowell is a clear and keen thinking fellow with high standards—best described as thoroughly a gentleman.

Y. M. C. A. Cabinet (3), Debate (4), Philomusea (1, 2, 3, President 4), Oracle Staff (4), "C" Association (4), Football (4).



Orchestra



WILLIAM HAMMERSLEY

Frankfort, Ind.

Pre-medic

Medicine

"Good qualities are the substantial riches of the mind; but it is good breeding that sets them off to advantage."

Bill isn't quite so well known to us, as he made his appearance on the campus only last year. Dignified, reserved, with good tastes, we are assured of his success as a physician. He came to us from the University of Maryland.



BERTHA LAMMERS

Teacher

R. R. 1, Indianapolis

Public School Music, English

"When she had passed, it seemed like the ceasing of exquisite music."

Bert's sweetness of disposition, her attractiveness, and her way of thinking quietly and talking gently have won her many friends. But her reserve has made it difficult for many to make her acquaintance so that those who do not know her well, know her not at all.

College Choir (2, 3, 4), Girl's Glee Club (2), Theatlosia (3, 4).



JOHN GORMLEY

Teacher

317 E. Sherman St., Marion, Ind.

History, English

"Time is but a stream I go a fishing in. I drink at it; but while I drink I see the sandy bottom and detect how shallow it is."

Regular song and dance man is Johnny. Looks as if he is, or should be, doing time with a vaudeville troupe. Very intelligent, but few people guess it, loyal and lovable to his friends, and always fair and square.

Band (1, 2, 3, 4), Orchestra (1, 2, 3, 4), Men's Glee Club (1, 2).



VESTA JACKSON

Teaching

Oakwood, Ohio

Public School Music, Piano

"To enjoy life, and help others to enjoy it, without harming anyone, herein lies the whole of morality."

Vesta, contrary to the general impression of her quiet behavior, believes thoroughly in having a good time. She knows well the art of being kind. Remembered for her jolly cheerfulness and contentment.

College Choir (1, 2), Dramatic Club (4), Philatheia (4), Crescendo Club (4), Boosters (4).



Oracle

LEONE GATWOOD

Albion, Ind.

Teacher

Public School Music

"Safe upon the solid rock
The ugly houses stand;
Come and see my shining palace,
Built upon the sand."

Sympathetic impulses, idealistic, tall and slender and poised. "Billy," versed in several branches of fine arts, is a pleasant companion in conversation to those who care to strike that secluded something which makes her what she is.

Girl's Glee Club (2, 3), College Choir (2, 3), Theatricals (2, 3), Orchestra (3), Dramatics (3). Completed work in three years.



CHRIS C. HUDDLESTON

1613 Fletcher Ave., Indianapolis

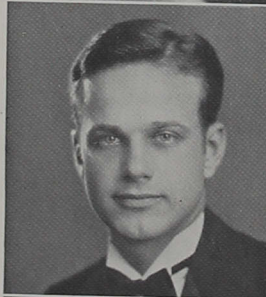
Teacher

Chemistry, Biology

"For I think that Thought is all;
Truth's a minion of the wind."

Chris is a young, optimistic, clean looking fellow, of quick and true understanding. Genuine, square, and loyal.

Class President (4), Men's Glee Club (2), Press Club (3), Philomusea (3, 4), Reflector Staff (4), "C" Association (4), Quartette (1, 2, 3), Basketball Manager (4).



JEAN LEWIS

Finley, Ind.

Teacher

Public School Music

"Thy soul was like a star, and dwelt apart;
So didst thou travel on life's common way
In cheerful godliness."

Thinking of Jean we invariably think of magic hands meditatively fingering piano keys. Jean should always play waltzes from the heart out. She is such a good humored person and easy to get along with, trying to please simply because she wants everyone to be pleased.

Girl's Glee Club (2, 3), Orchestra (2, 3), Philathea (1, 2, 3), Oracle Staff (3). Completed Work in Three Years.



MAX GORVIE

Sierra Leone, Africa

Religious Education

English, Psychology

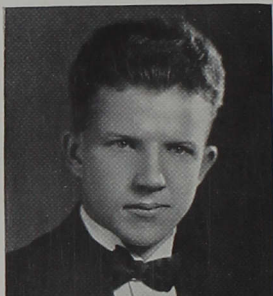
"I stood
Among them, but not of them; in a shroud
Of thoughts which were not their thoughts."

Perhaps it is difficult to understand Max because we do not understand his people, but that detracts nothing from our appreciation of him. We admire and marvel at his erudition and his memory. We value his good-naturedness, and we love to hear him laugh. Questioning seriousness, industry, consecration, and reverence are some of the qualities which characterize Max.

Philomusea (2, President 3), Science Club (2, 3).
Completing work in three years.



Orators



LESTER HONDERICKS

Minister

Marshall, Ill.

Psychology

"Dreams of doing good
For good-for-nothing people."

Industrious, responsible, good-hearted Red, who would do anything for anyone.

Y. M. C. A. Cabinet (1, 2, 3, 4), Zetagea (1, 2, 3, 4), Cheer Leader (1, 2, 3, 4).



DORCAS PETTY

Teacher

Peru, Ind.

Latin, English, Zoology

"Of science and logic she chatters."

Efficient, studious and conscientious, Dorcas always seems either happily busy or busily happy. She has prepared to teach but we wonder if perhaps she shouldn't have taken more home economics!

Y. W. C. A. Cabinet (4), Debate (2, 3), Girl's Glee Club (1, 2), Dramatic Club (4), Press Club (1, 2, 3), Thecallosia (2, 3, President 4), Science Club (2, 3), Booster Club (4), Lab. Assistant Zoology (4), Librarian (2, 3).



DELMER HUPPERT

Teacher

Dale, Ind.

Mathematics

Versatile in many forms of entertaining, Delmer has stood during his four years here, as one of the outstanding men to sing, preside at a banquet, or arrange a party. His good humor and pleasing personality have won many friendships, but a seeming disdain of the inferior has kept many from knowing him.

Y. M. C. A. Cabinet (2, 3, President 4), Men's Glee Club (2), College Choir (1, 2, 3, 4), Zetagea (1, 2, 3, President 4), Science Club (2, 3, 4), College Quartette (2, 3, 4), Music Club (3, 4).



ALMA JOYCE NOBLITT

Teacher

4257 Otterbein Ave., Indianapolis

Public School Music, Latin

"I shall go softly,
Singing life;
Forever singing, singing
Life..."

No one knows Alma very well, except maybe Ralph and Bea. Meek, studious, one remembers the simplicity of her, and a pair of quiet eyes.

Y. W. C. A. Cabinet (2), Girl's Glee Club (2, 3, 4), Alpha Psi Omega (3, 4), Philalethea (2, 3, President 4), Music Assistant (3), Booster Club (3), Music Club (3, President 4).



Oracle

MAURICE KERR

1532 Roosevelt Ave., Indianapolis

Minister

English

"Exhausting thought and having wisdom with each studious year."

His quiet reserve, his restless, all-devouring intellect and the conviction of his views—these personate Maurice Kerr.

Men's Debating (4), Student Pastor (1, 2, 3).



RUTH W. NOEL

Covington, Ind.

Teacher

Mathematics, English

"She could distinguish and divide a hair twixt south and southwest side."

Ruth always does all of her work. Being a math major she's practical and industrious and always glad enough about something or other to be smiling.

Y. W. C. A. Cabinet (3), Girl's Glee Club (2, 3, 4), Press Club (1, 2, 3), Philaethea (2, 3, 4), Reflector Staff (3), Science Club (2, 3, 4), Music Club (4).



ERNEST LE ROY

Athletic Director

37 Lake Ave., Williamson, N. Y.

Zoology, English, Journalism

"'Tis pleasant sure to see one's name in print."

A book's a book, although there's nothing in it."

A man of moods, of pride and vanity, and cynical defiance, combined with a mental energy and industry, scorn for hypocrisy, love of poetry.

Dramatic Club (2), Press Club (1, 2, 3, 4), Zetagathea (2, 3, 4), Reflector Staff (2, 3, 4), Editor of Reflector (4), Oracle Staff (4), Science Club (4), "C" Association (1, 2, 3, 4), Baseball (1, 2, 3, 4), Physiology Lab. Assistant (4).



MYRON K. LAMM

Danville, Ill.

Teacher

History, English

"A man he seems of cheerful yesterdays and confident tomorrows."

Myron is intelligent but he hides his real self. He is prone to think that people do not understand him because they are incapable of it. He is always probing at the subtle and we wonder if there are any anecdotes he has not heard.

Y. M. C. A. Cabinet (3), Class President (3), Dramatic Society (2, 3, 4), Alpha Psi Omega (3, President 4), Press Club (President 2), Zetagathea (1, 2, 3, President 4), Oracle Staff (3), "C" Association (3, 4).



Drachmans



GERTRUDE MCCONNELL
Flora, Ill.

Teacher

Home Economics, Dramatics

"I'd love to be a gypsy
With brown feet bare."

Gay and careless, Trudie should always be dancing in red slippers. She has an actress' state of mind relative to ribbons and bows, temperament, and excessive energy.

Alpa Psi Omega (4), Dramatic Club (2, 3, 4), Philalethea (3, 4), Home Economics (2, 3, 4).



ORVILLE E. MILLER
Mauckport, Ind.

Teacher

English, History, Botany

"Mind is the great lever of all things and human thought is the process by which human ends are ultimately answered."

Orville is brilliant and intelligent, with a subtle sense of humor, but is somewhat estranged, and bafflingly hard to know. To the men he is a quiet, pleasant fellow, and a good sport; but the girls just do not know him.

Baseball (4).



ARDIS V. SHAFER
Twelve Mile, Ind.

Teacher

English, Speech, Spanish

"Dowered with the hate of hate, the scorn of scorn, the love of love."

Ardis is witty and nice and human. You'd enjoy the tea-parties in her room. Ambitious, sincere, and a good sport, everyone who knows her, loves her.

Debate (4), Alpha Psi Omega (3, 4), Philalethea (1, 2, 3, President 4).



HOWARD ROSS
1407 N. Olney St., Indianapolis

Teacher

History, English

Red is the essence of reliability, yet there is nothing prosaic about him. Fair and square in sport; faithful, loyal, and of resolute courage, and dominant of all petty obstacles, Red leaves a good taste in our mouths as a morsel of good cheer.

Dramatic Club (3), "C" Association (3, 4), Baseball (3, 4), Football (3, 4).



MARJORIE SCOTT

Brazil, Ind.

Teacher

Public School Music, Latin

"The world is full of a number of things—
I'm sure we all should be as happy as kings."

There is a happiness about Marjorie that is contagious. Her's is a sort of work-hard, bear-all cheerfully, do-all bravely attitude, and to live for the morning mail!

Debate (1), Girl's Glee Club (1, 2, 4), Orchestra (1, 2, 4), Press Club (1, 2, 3, 4), Philalethea (1, 2, 3, 4), Music Club. Completed work in three years.



ROBERT L. VIALPANDO

Alcalde, N. M.

Teacher

History, Botany, Spanish

"Character is the sum of all we struggle against."

Coming all the way from New Mexico, Bob has brought his guitar and his cheerful "hello" to gladden many a Centralite who may have been blue. Sincere and loyal and amiable, he has been one of our best friends.

Student Pastor (1), Zetagathea (1, 2, 3, 4, Science Club (4).



BEATRICE YOUNG

Wabash, Ind.

Teacher

English, Biology, Religious Education

"To me the meanest flower that blows can give
Thoughts that do often lie too deep for tears."

Bea has found a meaning to religion not apparent to most of us, yet she is always ready for a bit of fun. We admire her adaptability to situations and her ever present eagerness to be pleasant.

President Y. W. C. A. (4), Girl's Glee Club (3), Philalethea (3, 4).



GEORGE SHEWMON

Kokomo, Ind.

Teacher

History, English

"The man who smokes, thinks like a sage, and acts like a Samaritan."

His personality contains a mixture of high seriousness and human understanding, of wit and satire, a hatred of sham and bigotry, and a live-and-let-live attitude. Few, if any persons, know him intimately but we can always rely upon his good-fellowship and loyalty.

President Press Club (4), Reflector Staff (4), Zetagathea (2, 3, President 4).





VEOLADA PEMBERTON

Minister

Terre Haute, Ind.

Bible, Religious Education

"They build too low who build beneath the stars."

Her personality is made up of faith in things—a high seriousness and a sort of ministering angel outlook.

Student Pastor (1, 2, 3, 4), Theaccolia (4).



LAWRENCE WERTZ

Minister

1325 West Ninth St., Anderson, Ind.

Bible, Philosophy

"Be patient, our playwright may show
In some fifth act what this wild drama means."

Larry is a dependable person, who believes in holding up for his convictions, whatever the cost. He has an almost impertinent humor, and the nicest laugh—the kind that is contagious. A loyal friend.

Dramatic Club (3, 4), Stage Manager (3, 4), Student Pastor (3, 4), Philomusea (1, 2, 3, President 4).



MARVIN SIBERT

Teacher

Sheldon, Ill.

Physics, Mathematics

"He was the mildest manner'd man
That ever scuttled ship or cut a throat."

Jolly, merry and likeable, just as he is true and staunch, and the personification of generosity. Everyone likes Sib around.

Science Club (2, 3).

HERMAN RIDER

Teacher

640 Caroline St., Gary, Ind.

Mathematics, Physics

Y. M. C. A. (3), College Choir (1, 2, 3, 4), Quartette (1, 2, 3), "C" Association (1, 2, 3, 4), Football (2, 3, 4), Basketball (1, 2, 3, 4), Tennis (2), Track (2, 3, 4).

ROBERT GEHLEBACH

Lawyer

Corydon, Ind.

Mathematics, English

EUNICE MARTIN

Teacher

R. R. 1, Indianapolis

Public School Music

Girl's Glee Club (1, 2, 3), Crescendo Club (3), College Choir (1, 2, 3).

Completed work in three years.



Oracle



Juniors

CLASS OFFICERS:

Ralph O'Dell, *president*

Christine Dalton, *vice-president*

Pauline Riley, *secretary-treasurer*



Orchestra

LOUISE ARFORD
1397 Russell Avenue
Indianapolis
Music, English

MARGARET
BROCKSMITH
Bicknell, Indiana
English, Social Science

ROY BOSSERMAN
Golva, North Dakota
History, Science

HARLEY CROUCH
Rural Route 1
Indianapolis
Mathematics

ARTHUR DeMEYER
Walkerton, Indiana
Biology, History

GENEVIEVE
DONALDSON
Casey, Illinois
Public School Music, Art



HEEDLIE COBB
Muncie, Indiana
Bible, Philosophy



HAZEL CARTER
1601 Edwards Avenue
Indianapolis
Speech, English



MARY ELIZABETH
COOK
Mooresville, Indiana
*Public School Music,
English, History*



CHRISTINE DALTON
Muncie, Indiana
English, History



EDNA DICKISON
Grass Creek, Indiana
Public School Music



ESTHER FRANKLIN
Frankfort, Indiana
Home Economics, English



Drachman

ARTHUR GARVIN
Hagerstown, Maryland
Bible



BEULAH GRIFFIN
Honey Creek, Indiana
History, Biology

RALPH HIATT
Portland, Indiana
Physics, Mathematics



EVELYN HORLACHER
Frankfort, Indiana
Public School Music, English

DOROTHY KEY
Evansville, Indiana
Home Economics, Art



HARRIETT KRAUSE
1627 Division Street
Indianapolis
English

BESSIE OSGOOD
Milford, Illinois
Chemistry



PAUL MILHOUSE
St. Francisville, Illinois
Bible, Philosophy

RAYMOND MILLER
Canton, Ohio
English, Journalism



RALPH O'DELL
Muncie, Indiana
Philosophy, Psychology

EUNICE MARTIN
Greenwood, Indiana
Public School Music, (Graduating 1931)



GLENN RAMSEY
Peoria, Illinois
Chemistry, Mathematics



ARTHUR RHOADES
Corydon, Indiana
Biology, Social Science

MARY ELLEN
SHAMBAUGH
Indianapolis
Speech

PAUL SHERRILL
Central, Indiana
Philosophy

RUTH WAGENER
726 Orange Street
Indianapolis
Public School Music

MAURICE SHADLEY
Greenwood, Indiana
Public School Music

FRANCIS WALTERS
Tippecanoe, Indiana
Botany, History

ROBERT WELLBAUM
Dayton, Ohio
Bible, Philosophy

PAULINE RILEY
Milford, Indiana
Biology, English

TAYLOR ROBERTS
1516 Edwards Avenue
Indianapolis
English

MARCELLE SMITH
Acton, Indiana
Latin, Public School Music

SAMUEL TAYLOR
Hillsdale, Indiana
Botany, History

LOIS TAYLOR
Potomac, Illinois
English

GHLEE WALKER
Montpelier, Indiana
Home Economics, English

ROBERT WINDHORST
52 Hoegen Avenue
Indianapolis
History, Chemistry





Underclasses

SOPHOMORES:

Gordon France, *president*

Nora Probst, *vice-president*

Dwight Thompson, *secretary*

Aubrey Davis, *treasurer*

FRESHMEN:

Glenn O'Dell, *president*

Grace Hicks, *vice-president*

Mary Villars, *secretary*

Roy Pownall, *treasurer*



Orchestra



Russell Abdon
Dorothy Aepli
Evelyn Bell
Alta Berger*

Henrietta Bixler
Elizabeth Breedlove
Opal Burch
Abbie Burwell*

Irene Carmony*
Hazel Carpenter
Irma Chambers
Ruth Cherry

Lucille Cook
Robert Cosselmon
David Cramer
Elizabeth Cramer*

Alice Davis*
Hilda Dewsnap*
George Dolby
Gordon France

Edgar Gault
Lloyd Gillingham
Ruth Griffith
Virgil Hague

Irene Hiatt
Mary Huddleston
Olive Jackson
Olive Jones

Shelton Kaiser*
Fred Koehn
Mary Esther Kemper
Lucille Kennell*

*Graduating from two year normal course

Sophomores



Drach

Lela Koffman*
Jennette Kurtz*
Lowell Lee
Marietta Leland

Ronald Lemme
Maxine Lightle
Violet Linson
Hulda Longacre

Francis Lutes*
Florence McOwen
Ruth Miller
Nedra Moudy*

Frances Noblitt*
Ernest Poe
Mary Esther Petty
Freda Phares*

Nora Probst
Mae Rife
Clarence Roberts*
Margaret Samuelson*

Rosa Scholl*
Olive Skillman*
Irma Small*
Julia Ann Sprague

Edgar Schade
Helen Schmidt
R. A. Shumaker
Dwight Thompson
Frances Wallace

Alva Ward
Mary White*
Junior Wilson
Caroline Wolff
Effie Belle Wolland



Sophomores

*Graduating from two year normal course



Orchestra



Grace Adams
Paul Ankney
William Arford
Virginia Bachtel

Anna Banta
Francis Belden
Ivan Bettner
Max Bell

Merle Biggs
Esther Bower
Noble Burkhardt
Kenneth Brice

Robert Carter
Winifred Chambers
Dellos Chiddister
Oliver Childs

Agnes Clements
Darline Clements
Merry Clouse
Hugh Cooper

Paul Cornelison
Catherine Cramer
Esta Cummins
Frances Dezarek

Mary Ducker
Josephine Eichmann
Arnold Elzey
Marie Fear

Clair Follick
Ruth Fredenberger
Harold Freshley
Alma Fuller

Eleanor Fullwider
Noel Genth
Robert Gilbert
Alberta Goss
Clarence Haight



Claude Brown

Freshmen



Drach

Kathryn Hachl
Herbert Hiatt
Grace Hicks
Addie Hill

Mary Hoth
Walter House
Mildred Lightle
Robert Lake

Louise Leland
Ray Linson
Dorothy Logan
Lois McKelfresh

George McCallister
Margaret McNabb
Anna Miller
Dorothy Millikan

Rhoda Mouer
Glenn O'Dell
Donald Partridge
Roy Pownall

Maxine Reed
Helen Scholer
Helen Scholl
Robert Schoonover

Prentice Seacat
Marie Shelton
Beulah Sibert
Wilma Simler

Ansel Simon
Helen Jane Smith
Alva Anna Swift
Dorothy Tohill

William Head
Helen Veach
Mary Villars
Alice Walts
Mary Ellen Weimar



Harry Harmon



Freshmen



378.05
I 390
23833



Students Not Pictured

JUNIORS

Benjamin Burchard, Hartford City, Ind.
Donald Carter, Indianapolis
Donald Klopp, Indianapolis
Paul Mellish, Indianapolis
Archer Shirley, Indianapolis
Ross Slabaugh, Elkhart, Ind.
Harold Smith, Marshall, Ill.
Lena Weller, Huntington, Ind.

SOPHOMORES

Ella Ahlf	Olive Kammerling
Thelma Brooks	Frances Killion
Paul Campbell	Mary Lashbrook
Robert Cook	Charles Lineback
Aubrey Davis	Florence McAra
Harold Emig	Delmar Moore
Robert Enyart	Daniel Nicodemus
Florence Featherstone	Laura Patton
Meredith Fink	Mildred Pogue
Elsie Gettinger	Arthur Rieman
Edith Hagelskamp	Martha Roney
Paul Huckriede	Margaret Shaw
Dwight Jackson	Victor Stech
Glenn Johnson	Caroline Wolff
Albert Judd	

FRESHMEN

Samuel Allen	James Lawrence
Matilda Anderson	Charles McMurray
Mildred Baldwin	Harold Maass
Elizabeth Blackman	Lewis Maxey
Oscar Bodenberg	David Owens
Ruth Clampitt	Coleman Pickens
James Currens	Kenneth Richter
Norman Eldridge	Mabel Scotten
Lloyd Freese	Edward Shaw
Raymond Girond	Emma Shannon
Mary Guthrie	John Simon
James Harper	Irene Tripplehorn
William Hatfield	Inez Weddell
Freda Hershaman	Marshall Whitaker
Russell Huffman	John Miller
Ronald Larsen	





ATHLETICS



Athletics

To Apollo, son of Jupiter, are ascribed the gifts of inspiration and prophecy to throw light on the dark ways of the future. Through his great skill he slayed the serpent Python and then founded the Pythian games in commemoration of his victory.



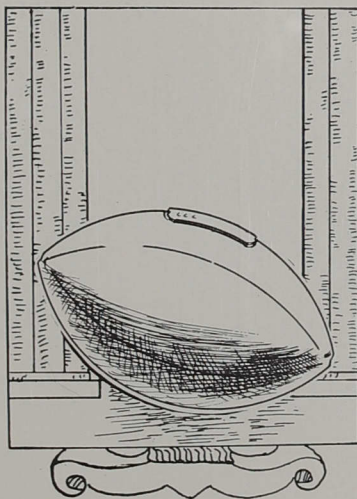


ATHLETICS



*Gymnasium 1921
Right, Men's Hall 1923*

Drach



Football

CAPTAIN RIDER



Track



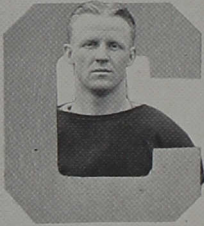
Rider



Wellbaum



Smith



Ross



Lemme



Simon

FOOTBALL 1930

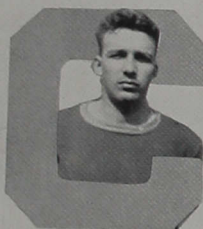
Although the 1930 season marked only the seventh season of football at Indiana Central, the same fighting spirit that has characterized former Central elevens was shown. The record in games won and lost was not the equal of other years but the Greyhounds played through a tough nine-game schedule against some of the strongest teams in the state despite the handicaps caused by injuries to several star players.

Central vs. Oakland City

The Indiana Central squad opened the season with a decisive 14-0 victory over the Oakland City pigskin warriors in a night game on the Central field. Follow-



Drachman



Doolittle



Stech



Linson

ing a scoreless first half, the Greyhounds came back strong. After a series of off-tackle plunges Lemme plunged over for the first marker of the game and also of the season. Ferguson tallied later for the second touchdown.

Central vs. Butler

The first meeting of a Central team against Butler on the gridiron occurred when the Greyhounds invaded the Butler bowl. Although out-weighted by every man, the Greyhounds managed to hold the more experienced Bulldog players during the first half. Injuries and lack of reserves finally succeeded in breaking down the Central squad as Butler triumphed 46-0.



Good



Moore



Lamm



Football



FOOTBALL SQUAD

First row, Gillingham, H. Smith, Good, Shaw, Moore, Ross, Bud Smith, Warner, Slabaugh (Junior manager).

Second row, Knierim, York, Eager, Freese, Cornelison, McCallister, Doolittle, Cryan, Haight (Freshman manager).

Third row, Osborn, Davis, Freshley, Boone, Hunter, Shanks, F. Smith, Childs, and Coach Good.

Central vs. DePauw

Handicapped by the loss of two varsity men, Central lost a hard game to DePauw on October 4, 39-7. The Tigers piled up a heavy score in the first half which the Greyhounds were unable to overcome. Frequent fumbles marred the game, as the Central men were still suffering from the effects of the hard Butler game.

Central vs. Franklin

The most evenly matched and hardest fought game ever played on Central field took place when the Greyhounds opposed the Franklin Grizzlies. The entire game was played in nearly mid-field with the exception of the latter part of the third quarter. Franklin scored the only touchdown of the game in this frame, enabling them to overcome Central 6-0.

Central vs. State Normal

The annual home-coming game played before a large crowd of alumni and former students resulted in an 18-7 defeat by the Indiana State Normal squad. The game was hotly contested and fought on even terms the entire time. Normal managed to score twice in the last quarter and overcame a one point lead held by Central.

Central vs. Rose Poly

Disastrous fumbles at critical moments cost the Cardinal team another game at Terre Haute resulting in a 19-0 victory for Rose Poly. The Engineers were in winning form and the Central eleven was unable to gain yardage.

Central vs. Earlham

After losing five consecutive games, the Greyhounds showed a complete reversal of form to defeat the Quaker gridmen 13 to 6. This was Indiana Central's second victory of the season and was featured by brilliant passing by both teams. Earlham's stiff forward wall frustrated Central's attempts to gain through the line.

Central vs. Manchester

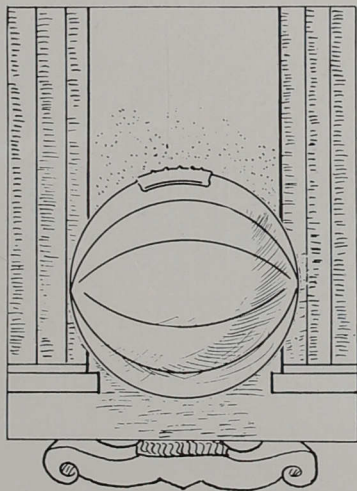
The Manchester Spartans invading the Greyhounds' lair for the last home game of the season proved their claim for high state honors by vanquishing the Centralites. Indiana Central, after a brilliant stand for forty minutes finally succumbed to a determined Manchester team 26-0.

Central vs. Muncie

Our Greyhound team carried the fight to Muncie for the final game of 1930. A superior Cardinal team smarting under last year's defeat by Central unleashed a furious attack in the closing moments of the game which netted them a 20-6 victory.



Drach



Basketball

CAPTAIN DURHAM



Track & Field



Durham



Wilson



Rider



Pickins

BASKETBALL

The 1930-31 basketball squad at Indiana Central came through one of the most successful campaigns ever staged on the hardwood at Central. Beginning the season with four regulars and with few experienced reserves, Coach Good succeeded in using Freshmen material to fill out the squad. After several weeks of hard work, a fighting aggregation of ball-hawks were turned out that ranked with the best in the state.

* * *

The Greyhounds journeyed to Muncie for the first game but lost after a valiant



Smith



France



Oracles



Swan



Mgr.
Huddleston



Judd

effort, 37-33. Durham showed best for Central.

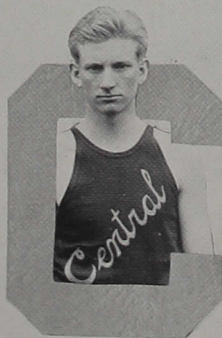
* * *

The fast Central quintet opened up the hardwood home season by drubbing the N. A. G. U. cagers. Rider and Pickens were the big guns.

* * *

In a fast game at Earlham the Greyhounds emerged victors in their third game 29-26. Several new players saw action.

For the first time in history Central dropped a Franklin cage team when the Greyhounds turned the trick here by a score of 41-39.



Hatfield



Linson



Genth





BASKETBALL SQUAD

Standing, Manager Huddleston, Hatfield, Swan, Durham, Rider, Emig, and Judd.

Kneeling, Linson, Gent, Smith, France, and Wilson.

Inset, Emig, captain elect.

In a nip-and-tuck return contest with Ball State the Central squad was nosed out 45-38 in the closing minutes.

After a slow start the Greyhounds again triumphed over N. A. G. U. on the Central floor 33-25. Nearly all the reserves saw action.

The fifth victory of the season was gained at the expense of the Indiana Law School five. Both teams played a slow brand of ball.

The Franklin Grizzlies were out for revenge on their own floor and took the Greyhounds into camp 36-22. Rider and Durham kept Central in the running.

The Manchester Spartans managed to drop through a two-pointer in the last minute of play that enabled them to squeeze out a 31-29 victory. The game was close the entire way.

After trailing at the half the Greyhounds managed to come back and defeat the Hanover Hilltoppers 30-24. Pickens and Durham were best for Central.

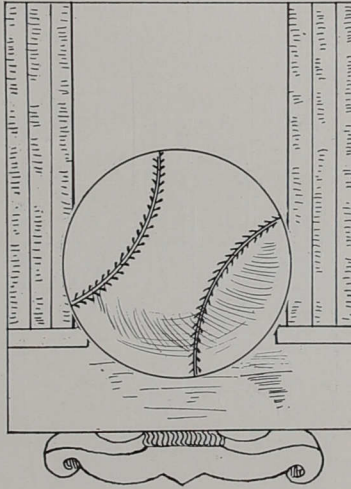
In the last home game of the season the Greyhound fighting five set back the Earlham Quakers 22-16. The game was close with neither team showing much the first half.

Playing the Hanover five off its feet during the first few minutes at Hanover enabled the Greyhounds to grab a substantial lead which was never headed, winning 30-24.

The ninth victory and last game of the season was chalked up against Manchester on their home floor. The Greyhounds were in command of the ball at all times and won 30-21.



Drach



Baseball

CAPTAIN JONES



Track and Field



Findley



Jones



Wilson



LeRoy



Simon

BASEBALL

Baseball at Central suffered a little drop in its record from the previous season but several new teams were played in the 1930 season that had not previously been scheduled. Athletic relations with Wabash college were established for the first time through the medium of baseball. Starting the season with only a few experienced men, Coach Good succeeded in developing some potential sluggers who managed to make



Drach



Ross



Swan

their opponents sit up and take notice during the latter half of the season.

* * *

After holding a safe lead for seven innings, the Greyhounds were overtaken by the Bonebrake Seminary horsehiders and nosed out 5 to 4. Nineteen Central men saw action during the afternoon melee.

* * *

The following week after the Bonebrake game saw a complete reversal in form. A determined Central team took the DePauw



Archibald



Shaeffer



Moore





DURING THE MUNCIE GAME

Tigers into camp 5-4 in spite of a three run rally in the seventh.

* * *
The second victory of the season was earned against the N. A. G. U. sluggers. Both teams displayed ragged fielding but Central managed to score twice in the first inning and three times in the fourth to clinch the game.

* * *
The first meeting with a Wabash team ended in a close defeat 9-8 after Central staged a rally in the eighth that fell one run short of tying the score.

* * *
Despite the fact that Central outthit the DePauw nine, the Greyhounds lost a heart-breaker to the invaders. DePauw gathered five hits but took advantage of errors to tally five runs to Central's four.

* * *
Ball State Teachers managed to bunch their hits in a contest on Ball field and downed the Greyhounds 5-1 for their fourth defeat of the season.

* * *
The Greyhounds broke even in a pair of ball games played with Manchester here. Both games were seven inning battles with Central winning the first after a belated start, 11-10. The second game was a pitchers' battle between LeRoy and Likens with Likens having the better end at the finish of the seventh, 4-3.

* * *
The next week the Greyhounds journeyed to North Manchester where they again broke even in the twin bill with the Dunkards. The Spartans copped the first battle 8-2, but Central came back to grab the second by a close margin, 1-0.

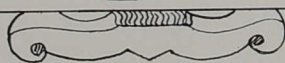
* * *
With Weiss pitching good ball, the N. A. G. U. ball players eked out a 7-1 victory over Central at the Riverside Park grounds. Central only managed to get two hits.

* * *
Playing a return game with Wabash at Crawfordsville resulted in a slaughter at the expense of the Greyhounds. The proteges of Coach Scholler hopped on to McCuen for twenty hits. The final score was 17-1.

* * *
In the final game of the season the Greyhounds lost to Ball State 5-3 after a hard fight. In spite of the defeat the large crowd of commencement visitors was rewarded by a real ball game.



Drach

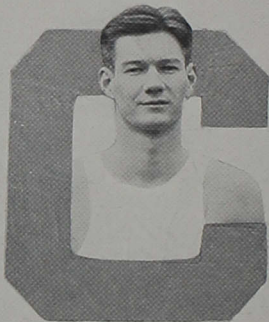


Track

CAPTAIN O. SMITH
(Not in Pictures)



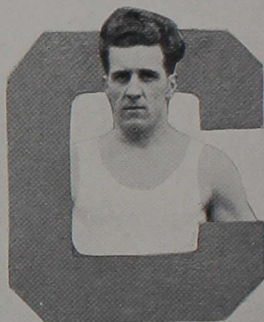
Track & Field



Rider



Lemme



Glassburn



Bailey



Poe



H. Smith

TRACK 1930

Although handicapped in practice, the 1930 Greyhound track squad managed to place well among the best of the small colleges in the state. Greyhound entries were listed in five meets during the season, including the little and big state meets.

In a triangular meet with State Normal and Butler, Central placed second. Oscar Smith was high scorer of the meet with 19 points. The second meet saw the Greyhounds drop a tough one to Earlham by the scant margin of one point. Captain O. Smith was again the star, capturing 25 points.

In the Little State meet the Greyhounds placed fourth. Rider and O. Smith were the only entrants in the annual state meet. Smith scored points in both the high and broad jumps, while Rider lost out in the javelin throw.



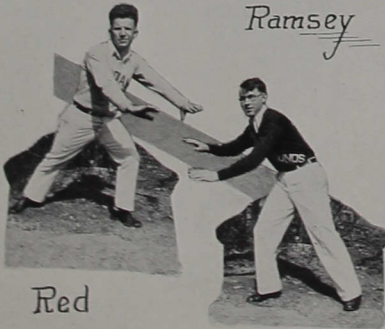
Drach



The Greyhound Bus

Harry C. Good is in charge of all athletics at Indiana Central and has produced teams that have ranked with the best in the small college class. He won several letters while a student at Central. He has studied coaching at Notre Dame, the University of Illinois, and at Wittenberg. We realize to some extent the difficulties he faces with the small school situation and express our true appreciation of his earnest efforts.

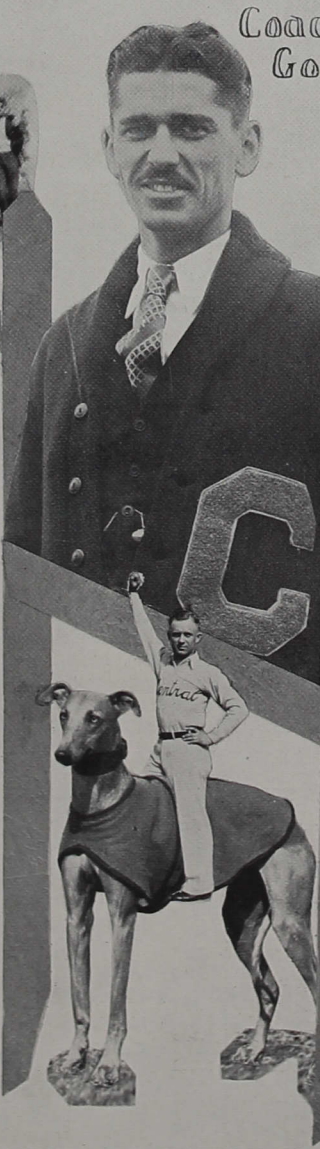
Too little praise it seems is given to the cheer leaders who with untiring effort have been successful in maintaining in the students the spirit for which Central is noted. Ramsey, the "senior" member of the cheer leaders, has introduced some new ideas this year. We extend our thanks to the three of them.



Red

Right:
Ramsey

Cooper



Coach
Good





CHAMPS

Genth, Bell, Seacat, O'Dell, and Whitaker.

INTRA-MURAL

Continuing the school's policy of the last two years in having intra-mural basketball for all men not on the varsity squad, ten teams were organized at the start of the season and played a complete round of nine games. Ross Slabaugh, intra-mural manager, divided the teams according to classes, having four Freshmen, two Sophomore, two Junior, and two Senior teams. Noel Genth's Freshman team tied Albert Findley's Senior team in the league standing but won the playoff 15 to 14 in a last minute rally.

Genth's team won the elimination tournament climaxing the season's competition. About seventy men took part in the intra-mural activities which attracted considerable attention on the campus due to the class rivalry.

TEAM STANDING

<i>Captain</i>	<i>W.</i>	<i>L.</i>	<i>Pct.</i>
Genth	9	1	.900
Findley	8	2	.800
Ross	6	3	.667
Davis	5	4	.556
Freese	5	4	.556
McCallister	5	4	.556
DeMeyer	5	4	.556
Lemme	2	7	.222
Ramsey	1	8	.111
Cornelison	0	9	.000

TEN HIGH INDIVIDUAL SCORES

	<i>Games</i>
<i>Points Played</i>	
Genth	78 9
Cooper	66 9
Gormley	59 8
Coldren	57 8
Findley	55 9
McCallister	54 9
Cornelison	54 9
Walters	53 9
Bittner	47 6
Currens	47 6



Manager Slabaugh





*First row, Biggs, Ruth Miller, Bower, Sibert, Villars, Leland, Millikan, Simler, and Petty.
Second row, Smith, Belden, Burch, Logan, Haehl, Fullwider, and Hoth.
Third row, Ann Miller, Veach, Baldwin, Longacre, Guthrie, Clouse, and Clements.*

GIRLS' GYM CLASS

Gym classes, which are required of all Freshman and Sophomore girls, include athletic games of various natures, and routine exercise drills. The student instructor is Hulda Longacre.



*First row, Belden, Clouse, Longacre, Huddleston (coach), Guthrie, and Clements.
Second row, Miller, Baldwin, Veach, and Smith.*

GIRLS' BASKETBALL TEAM

Indiana Central was represented by an organized girls' basketball team this year for the first time in the history of the school. The girls, handicapped by their late start and lack of experience, made an exceptionally good showing, winning half of their games. They played some of the best teams Indianapolis could offer, including the Hoosier Demons, the Riverside girls, and the Brookside girls. Chris Huddleston coached the team.



Track & Field



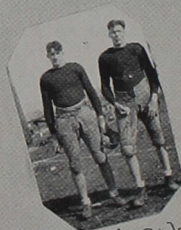
Slabaugh



Coldren



France



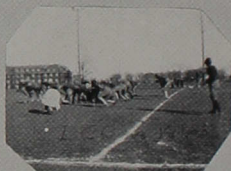
Smith & Rider



Vance - Coach - Reese



Lemme & Moore



ICC vs Valpo.



On the Defense



Another Strike-out

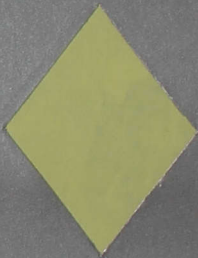
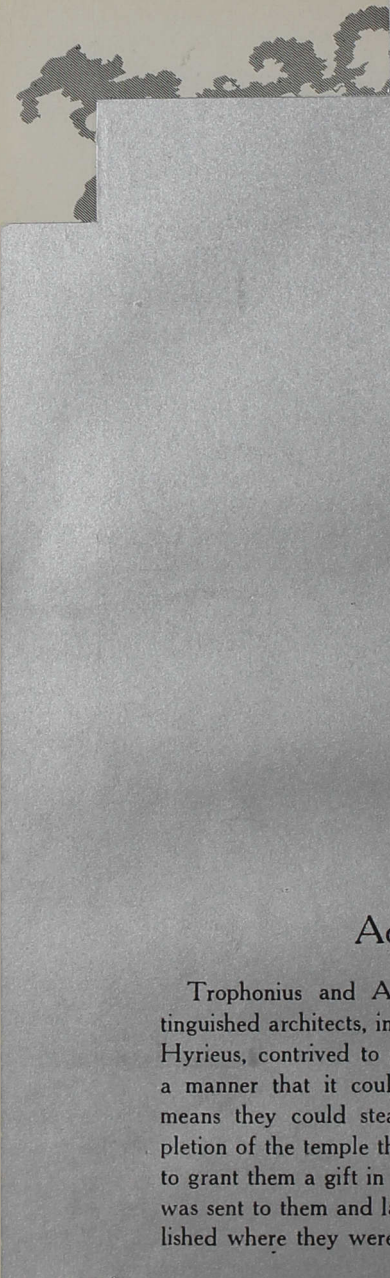


First Half at Muncie



Scrimmage at Earlham





Activities

Trophonius and Agamedes, brothers and distinguished architects, in building a treasury for King Hyrieus, contrived to place a certain stone in such a manner that it could be removed, and by this means they could steal the treasure. After completion of the temple the brothers prayed to the god to grant them a gift in return for their labor. Death was sent to them and later a cavernous oracle established where they were buried.



ACTIVITIES

Activities of the campus contribute nearly as much to a college education as the regular class room work itself. Practically all majors of the curriculum have definite organizations in connection with them whereby the students receive training and experience that will prove valuable to their interests in following out their profession.

Those interested in music have the opportunity to become a member of the Crescendo club, the college choir, the girls' glee club, the orchestra, the band, a trio, or a quartette.

Those concerned with public work may direct their attention to the literary societies, dramatics, or debating. Also the school publications, the science clubs, and the Christian Associations, offer development in still other channels.



THE BAND

First row, Schoonover, Chiddister, Brice, Bell, Hague, and House.

Second row, Nicodemus, Seacat, Ramsey, and Gormley.

Third row, Abdon, Milhouse, Cosselman, and DeMyer.

Inset, Maurice Shadley, director.



ORCHESTRA

Left to right, Abdon, Schoonover, Durham, Wallace, Chambers, Mary E. Cook, Gatwood, Hague, Parsons, Bell, Bechtolt, Dickinson, Fink, McKellfresh, Villars, Nicodemus, Scott, and Carter.

Insets, left, Prof. William Fox, director. Right, Maurice Shadley, assistant director and trombonist.





COLLEGE CHOIR

First row, Martin, V. Aepli, Krause, Burroughs (director), Mary E. Cook, Dickinson, Wolff, and Chambers.

Second row, Bechtolt, McEowen, Good (accompanist), Wallace, Rife, Donaldson, and Adams.

Third row, Head, D. Aepli, Gatwood, Wagener, and Gibson.

Fourth row, Hague, O'Dell, Elzey, Brice, Nicodemus, and Schoonover.

Back row, Huppert, Durham, Cosselmon, and Gilbert.



GIRLS' GLEE CLUB

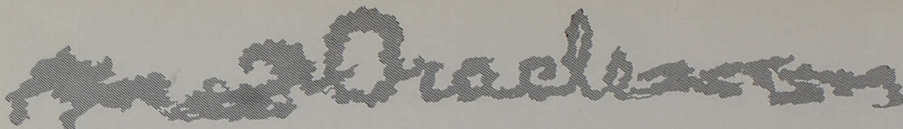
First row, Martin, Clements, Horlacher, Dickinson, Burch, Breedlove, Biggs, Scholer, Mary E. Petty, and Griffith.

Second row, Bachtel, Ann Miller, Moudy, Gilliatt (director), Millikan, Chambers, Probst, and Scott.

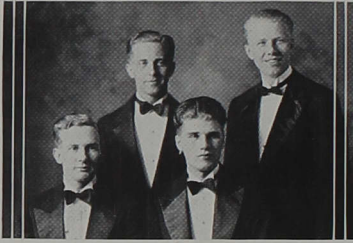
Third row, Reed, Wolff, Carpenter, Ruth Miller, Noel, Lucille Cook, and Rife.

Fourth row, Mary E. Cook, Krause, Dorothy Aepli, Walker, Adams, Wagener, and Virginia Aepli.





MUSICAL ACTIVITIES



GREYHOUND QUARTETTE

Huppert, Thompson, Cosselmon, and Shadley.

Burroughs, is one of the outstanding musical organizations. The personnel of the choir consists of thirty students who have had special training in voice. Programs have been given in Thorntown, Beech Grove, Shelbyville, and in several of the large churches in Indianapolis. Virginia Aeppli is president and Julia Good is accompanist.

The *Girls' Glee Club* is directed by Mrs. D. H. Gilliatt. Any girl in the college who passes the entrance examination is eligible for membership. Excellent training in choral singing is offered to the members. Two programs were given in chapel, and on April 16, the girls sang for the Indiana Federation of Music Clubs' Convention. Carolyn Wolff is president and Julia Good accompanist.

The *Orchestra*, directed by Prof. William H. Fox, offers valuable ensemble training to the students of the college. There are twenty-five members. In May the orchestra gave a program of operatic numbers. Leone Gatwood is president and Maurice Shadley is assistant director.

The *Band* directed by Maurice Shadley, is an outstanding booster for the college. Its music has created enthusiasm and school spirit at our games and pep sessions. April 10 one of the best musical programs of the year, the annual band concert, was given in the auditorium. Robert Cosselmon is president of the organization.

The *Girls' Trio* was organized September, 1930. The personnel includes Florence McEowen, soprano; Frances Wallace, first contralto; and Harriett Krause, second contralto, all residents of Indianapolis. The girls have had active program parts in Indianapolis and nearby towns. April 16 they sang for the Past Presidents' Frolic at the Indiana Federation of Music Clubs' Conventions.

The *Greyhound Quartette* represented the college in field work during the summer of 1930. In Indiana and Illinois they covered a distance of two thousand miles. The members are John Thompson, first tenor; Delmar Huppert, second tenor; Robert Cosselmon, baritone, and Maurice Shadley, bass. This year the Quartette has given a number of programs in and near Indianapolis. Jane J. Burroughs is the coach.

The *Troubadour Quartette* is a new organization on our campus. Its members are Arnold Elzey, first tenor; Roy Pownall, second tenor; Virgil Hague, baritone; and Kenneth Brice, bass. During the spring vacation the Quartette toured southern Indiana giving programs in many churches.



TROUBADOUR QUARTETTE

Elzey, Pownall, Hague, and Brice.



Draclet



First row, Thompson, Ramsey, Gilliatt (faculty advisor), France, R. O'Dell, Cooper, and Cobb.
Second row, Sherrill (president elect), Rhoades, Huppert (president), Durham, Hondricks, and Miller.

The Y. M. C. A. and the Y. W. C. A. have accomplished more in the building of ideals and character, and in developing the social and the religious life on the campus than any other organization. Students come in contact with the "Y" through its weekly meetings, its Buddy System, the Big Mixer, the Tug-o-War, the May Morning Breakfast, and the Faculty Parties. The "Y" solicits many of the leading chapel speakers, besides sponsoring Educational Week when nationally and internationally known speakers are brought to the campus for lectures and personal interviews. Prof. and Mrs. D. H. Gilliatt are the faculty advisors of the respective groups.



First row, Casterline, V. Aepli, Wolff, D. Petty, Donaldson, and Riley.
Second row, Young (president), Probst, Gilliatt (faculty advisor), Taylor, and Daggy.



Orators



Left to right, Kerr, Milhouse, Sherrill, O'Dell, Cobb, Good, (inset) Prof. Harmacy, coach.

The men's debating teams, coached by Prof. John J. Harmacy, debated the question, "Resolved, That upon the declaration of war with another nation, our government should use only conscripted wealth for all expenditures involved in the war." The team won three of the six decision debates.



Left to right, Walker, Miller, Kemper, Shafer, Osgood, Smith, Dalton, (inset) Leora Wiemar, coach. Louise Arford is not pictured.

The women's forensic team, which won two of their five decision debates, was coached by Prof. Leora Wiemar. The question debated was, "Resolved, That collegiate social fraternities should be abolished."



Oracles



Front row, Noblitt, Wolff, Shafer, Moudy, McConnell.
Second row, Lamm, Wertz, Rhoads, O'Dell.

The *Collegiate Dramatic Club* received their charter of the Gamma Theta cast of *Alpha Psi Omega*, an honorary dramatic fraternity, on March 10, 1930. Sixteen members affixed their names to the charter and Indiana Central College received its first national honorary fraternity. Only eleven of the original sixteen members returned to school last fall but this number was increased by seventeen at their initiation May 3. The club has presented three major performances during the past semester besides several short numbers.



Scene from "Captain Applejack."

The newly initiated members of Alpha Psi Omega are: Vesta Jackson, Leone Garwood, Hazel Foutch, Arville Gibson, Dorcas Petty, Nila Daggy, Maribel Wineinger, Louise Arford, Gordon France, Roy Bosserman, Jane Smith, Mary Ellen Shambaugh, Mary Esther Petty, Ross Slabaugh, Raymond Miller, Hulda Longacre, and Arnold Elzey.





Ernest LeRoy, editor; George Shewmon, columnist; Ralph O'Dell, manager; Raymond Miller, associate editor; and Ghlee Walker, society editor.

The *Reflector* is the bi-weekly publication of Indiana Central college and endeavors to reflect through its columns the life and activities of the student body, the administration, and the alumni.

Prof. Earl Stoneburner is faculty advisor.

BAND CONCERT
TODAY

THE REFLECTOR

BI-WEEKLY PUBLICATION OF INDIANA CENTRAL COLLEGE

EVERYBODY
OUT

VOL. IX
INDIANAPOLIS, IND. APRIL 10, 1931
No. 14

MORE THAN 900 VISITORS CROWD CAMPUS HIGH SCHOOL DAY

CENTRAL N

Hard Hitting an
Has For Se
Chaple I

The Indiana Central basketball team, tomorrow at Indianapolis when the Walnut College team, although back of practice, is getting ready to go off at the last game of the season. Coach Gled has twenty men and his boys of having for this week. He is not a defeat, as Howard Ross will be the last. However, Friedman has been in practice and interview with Ross.

Kilmer LeRoy, a member, or even, he will start the game. The Louisville TT has shown a vast amount, this past week, strengthened by the addition of Whitaker, a Freshman, which brings the number of candidates for this use: Maxwell Henderson


President's Message

Long before started this morning, some pictures in Illinois and in the northern and southern ends of Indiana were gathering together of high school students for the visit to the campus of Indiana Central College. It is never in the immediate west, and from the college, garden and school had reported that they would be on hand with about 400 young people, but the very small number of people yesterday morning and when the count was made it was estimated that well over 900 visitors mingled on the campus.


Of those that registered James (captain of McCann), Ill., with six young people has the record for distance traveled with over 800 miles for the record trip. This group was A. N. J. Jan, R. J. W. Hartman of Longview had the largest group from Illinois. W. C. Hayes of Louisville had four companions and Ben. Stang of Prairie, Ill., was on hand. Illinois had twenty-four visitors.

Rev. D. L. Stull from New Middlesboro, Ind., had thirty-six of his group registered. This was the largest group from Indiana. Carlisle, Kan. J. A. Smith of Geyden had twenty-one, while Ray. Craig, Birmingham and Chas. Turley of Pittsburg had sixteen. Other groups from Indiana

(Continued on Page 2)



ERNEST LE ROY
EDITOR



RALPH O'DELL
BUSINESS MGR.



The Oracle




Left to right, first row, Lowell Good, business manager; Margaret Brocksmith, literary editor; Jean Lewis, music editor; Margaret Berdel, art editor; and Ernest LeRoy, sports editor.


Second row, Robert Durham, joke editor; Homer Achor, editor-in-chief; Albert Findley, circulation manager.

Inset, Prof. W. P. Morgan, faculty advisor.



The Oracle is the college annual publication and is published jointly by the Junior and Senior classes. It purposes to bind in pictures and in a few words those memories of Indiana Central which are longest cherished.



HOMER ACHOR
EDITOR



LOWELL GOOD
BUS. MGR.

The
1931
ORACLE
OF INDIANA CENTRAL COLLEGE
INDIANAPOLIS





Left to right, Tripplehorn, Franklin, Weller, Walker (president), Dunham, Ahlf, Carpenter, Millikan, Hiatt, McConnell, and Key.
Inset, Prof. Leona Stuart, faculty sponsor.

The *Home Economics Club* was organized November 9, 1927. Its purpose can best be symbolized by the use of the six colors of the rainbow representing Strength of Character, Scholarship, Health, Beauty, Service, and Home. Its aim has been to acquaint the members with higher standards of living and nobler ideals of home life.



First row, R. Hiatt, Walker, Noel, Prof. L. J. Michael, Prof. D. L. Eaton, Osgood, Foutch, and Cramer.
Second row, Klopp, LeRoy, Huppert, Coldren, Gibson, Fink, and Gorvie.

The *Science Club* is composed of those who are majoring in science and interested in learning more about the scientific world than is in their own text book. The club attempts to find the more interesting phases of science and to present them, either in talks or papers, in their monthly meetings.



Orchestra



First row, LeLand, Forney, Goss, McNabb, Longacre, and Walker.

Second row, LeRoy, Huckriede, Shewmon (president), O'Dell, and Miller.

THE PRESS CLUB publishes the Reflector. It is composed of the editorial, business, and circulation departments and the reporters. The organization has regular meetings and several social functions each year.



First row, Dickinson, Horlacher, Jackson, Noblitt, Berger, and Casterline.

Second row, Milhouse (president), Poe, Noel, Miller, Hague, and Achor.

THE CHRISTIAN ENDEAVOR SOCIETY of the college plays an important part in the life of the students, cooperating with the "Y" in its work.



First row, Ducker, Forney, Cummings, and Jackson.

Second row, Honderich, Bosserman, Gorvie, and Enyart.

THE STUDENT VOLUNTEERS, a campus organization interested in foreign missions, is a unit of the State and National Volunteer movement.





*First row, Huddleston, Clouse, Jackson, Petty, Taylor, Cook, Sprague, and Ramsey.
Second row, Cramer, Findley (president), Lamm, Rhodes, and Bell.*

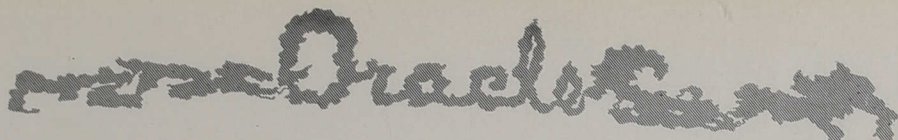
THE BOOSTER CLUB works for the betterment of our athletic program. It supplies the sweaters for our lettermen, feeds the team after games, and publishes the Greyhound. The members are representatives of the four classes and the different organizations.



*First row, Ross, Moore, Lemme, Poe, Judd, and Simon.
Second row, Bailey, Swan, Smith, Findley, and Durham.*

THE "C" ASSOCIATION represents the athletes of the school. All men earning a major "C" are initiated into this organization. It cooperates with the school in the building of a better type of athletic teams. Herman Rider is president (not in picture).





Literary Societies

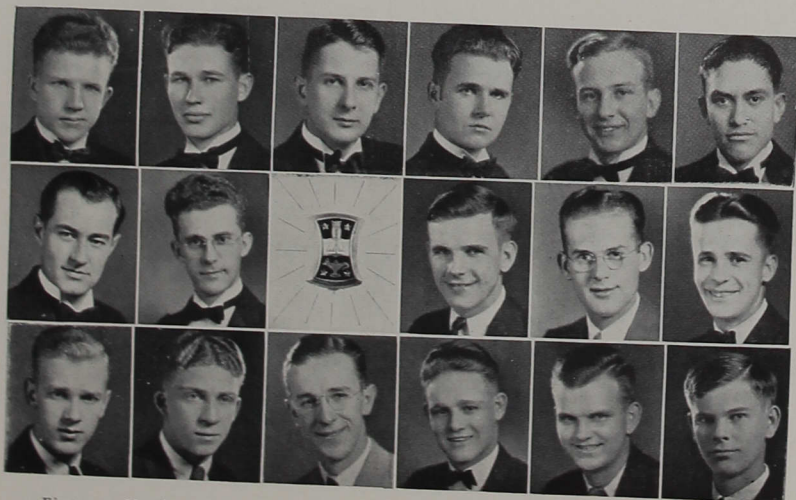
The purpose of the literary societies is to orientate the members in parliamentary drill and to give practical training for public appearances through the reading or productions, giving of impromptu speeches, and other similar procedure. They meet every Monday evening in their respective halls.

ZETAGATHEA

"Seekers of Good"

Press on! If fortune play thee false
 To-day, to-morrow she'll be true;
 Whom now she sinks, she now exalts,
 Taking old gifts and granting new,
 The wisdom of the present hour
 Makes up the follies past and gone;
 To weakness strength succeeds, and power
 From frailty springs! Press on, press on!

—Benjamin



First row, Honderich, Achor, Shewmon, Lamm, Huppert, and Vialpando.

Second row, Borchers, LeRoy, R. Hiatt, Windhorst, and Hague.

Third row, France, Wilson, Gilbert, Bell, McCallister, and H. Hiatt.

Not in picture, Huckriede, Johnson, Stech, Cook, Shirley, Davis, Owens, Moore, and Smith.



Orchestra

THEACALLOSIA

"Labor Conquers All"

Labor is rest—from the sorrows that greet us,
Rest from all petty vexations that meet us,
Rest from sin-promptings that ever entreat us,
Rest from world-sirens that lure us to ill.
Work—and pure slumbers shall wait on thy pillow;
Work—thou shalt ride over Care's coming billow;
Lie not down wearied 'neath Woe's weeping willow!
Work with stout heart and a resolute will.

—Osgood



First row, Daggy, Brocksmith, Gatwood, Bechtolt, Franklin, Lammers, and Petty.

Second row, Horlacher, Smith, Walker, Donaldson, Marietta Leland, Rosa Scholl, and Lightle.

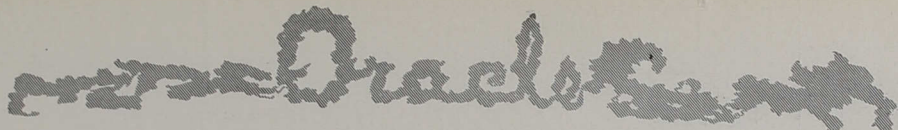
Third row, Hiatt, Taylor, Probst, Longacre, Cherry, and Pemberton.

Fourth row, Rife, Carter, Clouse, Miller, Weimar, Fullwider, Helen Scholl, and Belden.

Fifth row, Hoth, Louise Leland, Kemper, Haehl, Jackson, Fuller, and Hicks.

Not in pictures, Shaw, Patton, and Weller.





PHILALETHEA

"Lovers of Truth"

She is an adorer of chaste truth,
And speaks religiously of every one;
She will not trust obscure traditions,
Or Faith implicit, but concludes of things
Within her own clear knowledge; What she says
You may believe, and pawn your soul upon 't.
(With apologies to Shirley)



First row, Shafer, Dunham, Lewis, Alma Noblitt, Virginia Aepli, Forney, Foutch, and Arford.

Second row, Riley, Noel, Scott, McConnell, Griffin, Osgood, Bell, Dorothy Aepli, Huddleston, and Young.

Third row, Cramer, Dickinson, Moudy, Berger, Burwell, Martin, Miller, Frances Noblitt, and Breedlove.

Fourth row, Wolff, Carmony, Burch, Jackson, Sprague, McKelfresh, Veach, Darline Clements, Agnes Clements, and Simler.

Fifth row, Bachtel, Reed, Chambers, Dalton, Biggs, Adams, Scholer, Smith, Dewsnap, and Villars.

Not in pictures, Blackman.

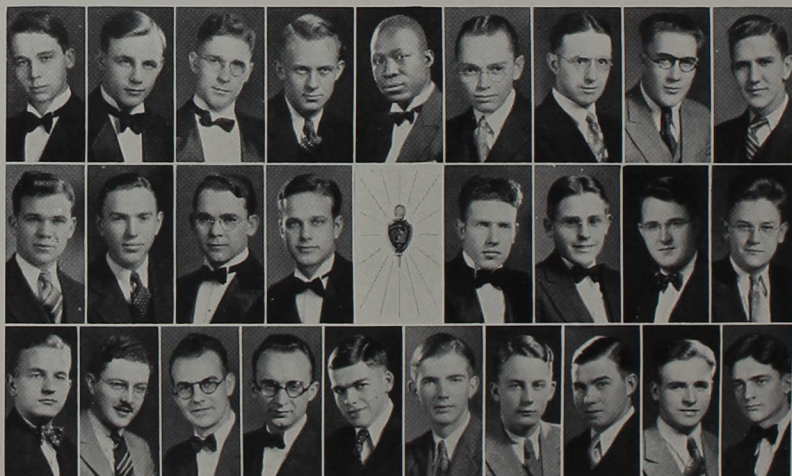


PHILOMUSEA

"Here We Prepare for Life"

For the structure that we raise,
Time is with materials filled;
Our to-days and yesterdays
Are the blocks with which we build.
Truly shape and fashion these;
Leave no yawning gaps between;
Think not, because no man sees,
Such things will remain unseen.

—Longfellow



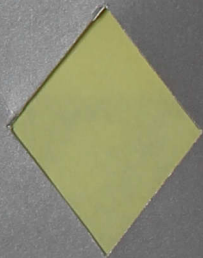
First row, Good, Durham, Wertz, Ramsey, Gorvie, Cobb, Miller, Bosserman, and O'Dell.

Second row, Rhodes, DeMeyer, Gibson, Huddleston, Findley, Roberts, Lee, and Ward.

Third row, Cramer, Dolby, Milhouse, Sherrill, Gault, Partridge, Simons, House, Carter, and Cornelson.

Not in pictures, Burchard, Slabaugh, Klopp, Swan, and Enyart.





Features

Apis, the Bull of Memphis, begotten by a deity, was worshiped by the Egyptians. By the acceptance or rejection of their sacrificial offerings, he gave answer to those who entreated his wisdom, and through their sacred rites and festivals held in his honor, happiness and prosperity descended upon the people.



FEATURES

Still outside the class room and the various organizations are many features which make up the whole of the college life at Indiana Central. An attempt is made on the following pages to give a cross section of these features.

The Oracle is printing a directory of alumni who have graduated in the last few years. For the first time, all students who appear in pictures are indexed in the back of the book.

A few groups are shown, and glimpses are seen and described of high school day, May day, and Commencement activities.

Although falling far short of the staff's desires, the pictures are as representative of the campus as was possible.

Drachmas



Verd^{na}, Phil



Lucy & Smitty



The Perkins



"Eva & Craig"



Don



"I now pronounce You"



"Gla"



Rev. Barrick



"Bess"



"Remember?"



"Jerry"



U. M. S.

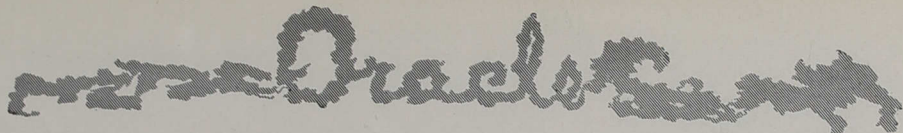


"Mr. & Mrs."



"The Old Gang"





Dear Alumni

Many things about dear old Central have changed since you were a member of the campus group. New faces pass to and fro. Buildings have been constructed or rebuilt. Trees are gone and the scenery has taken on a new aspect.

You also have changed. You are no longer a student of books, but are a more earnest student pursuing life's work. Some of you are teachers, others have entered business and still others have become active in the ministry. Some have even become members of a matrimonial partnership. Your interest for Indiana Central college may be hidden deep under these others which you face from day to day, but it is there.

And although much is different, there is much that is the same. Remember the splendid atmosphere that made you feel you all belonged to one family? That same Central spirit continues to live. Remember your excitement when Central was two runs behind with the bases loaded in the ninth—and two strikes and no balls charged to the batter? The excitement still surges high.

Why, so many things are just as they used to be!!! The professors still enjoy giving examinations. The Freshmen still delight in green paint. The girls still cross the campus to "fetch" soft water. The professors still bore you in chapel. And, in the spring, that softly babbling Lick Creek with its lazy breezes remains the favorite haunt of the campus couples.

And so, we dedicate these pages to you, dedicate them to the memories which are so much a part of you. For those graduating in the last three years we are giving a directory, furnished by the courtesy of the registrar. Turn to the back of the book and there find the alumnae and alumni of '28, '29, and '30. Learn what your old friends are doing and where they are doing it. Then, why not sit down and write them a line? Keep the Central tie, tied, says we.

Sincerely,

The Editor



Orchestra



a gang of girls
(1)



and
a gang of fellows
(2)



Dinning Room Force
(3)



"Dishwashers"
(5)



The Looks
(4)



When the Freshies Got Wet!
(6)



Presbie Waitresses at the
May Morning Breakfast
(7)

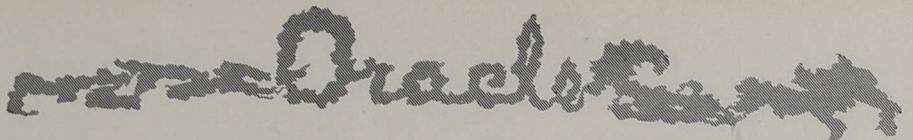


Normal Class
(8)



Vacation!
(9)





Around the Campus

(Pictures on opposite page)

"Birds of a feather flock together," and so do some of the girls and fellows, especially when there is a camera around. It's a great life! (1) and (2).

About three times a day, as regularly as one would eat his meals you might say, these girls, and !!!!!, (3) don the white. They're the serving force of the dining room, and, oh, how they carry on! And what they carry on, too! Then there are the cooks (4) that supervise and sample. Mrs. Maude Coake, left, has efficiently managed the kitchen work for several years. Miss Martha Cravens, right, better known as "Aunt Martha," has been her valuable assistant. Her cherry pies are great! In the picture numbered (5), we see the dishwashers have come out in the open, for once at least! The kitchen affords a large opportunity whereby students help in financing their way through school.

The annual tug-o-war (6) is the big show between the Freshies and the Sophomores and is followed by the Freshmen-Sophomore football game. The picture shows the Frosh crew getting their spirits dampened during the affair last fall at Lick Creek. It so happened that experience had been a good teacher for the Sophs and they had not only dug footholds on their side but had also poured water over the green and grassy side of the Freshies. The pull was followed by the traditional love feast and burying of the hatchet.

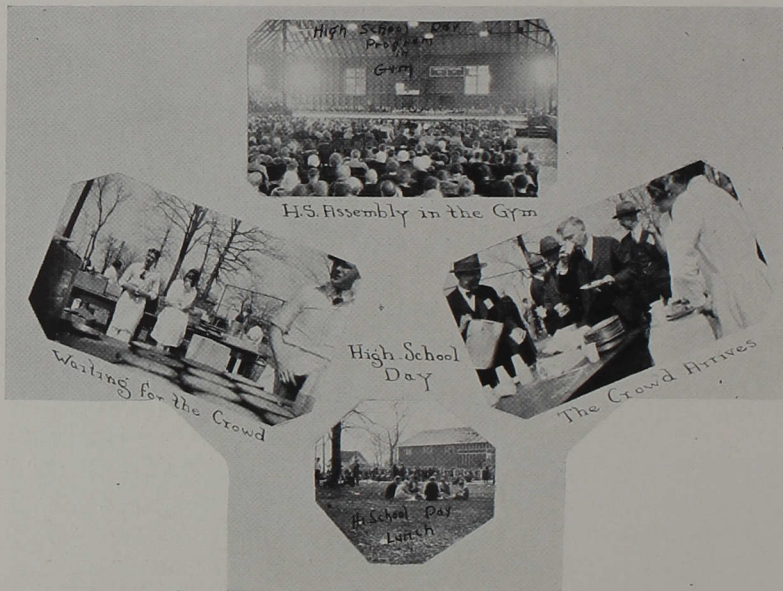
Each year the Y. W. C. A. sponsors the May morning breakfast, the proceeds of which enable one of the students to visit Lake Geneva. We hand it to the Freshman girls of last year (7) for having the attractive booth.

Last fall the two-year normal class decided to organize separately in order to attract more attention and build more prestige for that department. In another year perhaps the staff can give these students more recognition. Part of them are shown on the opposite page (8).

Some of the students waiting for the bus to start them on their homeward journey at vacation time (9) were caught by an alert cameraman, just before the holidays.



Oracle



HIGH SCHOOL SENIORS

No doubt many of you are planning to go to college. Some of you have definitely decided to come to Indiana Central. Others are still undecided. Still others plan to go elsewhere. There are some perhaps who have no such intentions, largely because they do not realize just what college is, and its value.

The administration in 1929 introduced upon our campus what is fast becoming a tradition—*High School day*. About eight hundred visitors came for the first affair, and the following year found approximately two hundred more. Most of them were high school students from all parts of Indiana, Illinois, and surrounding states.

The Oracle staff is proud to make known that Indiana Central college is constantly growing in prestige throughout this territory. Consequently we extend to you a hearty welcome to visit our campus, feel the splendid spirit that characterizes the student body, see our athletic games, visit our class rooms, and become acquainted, if possible, with the campus life.

To the prospective student we dedicate this page and say, "See you next fall!"

Yours for Indiana Central,

The Staff



Drach



Det. '31



May Queen
Bertha Lammers



Faye - '30



May-Day Scenes



You must wake and call me
early, call me early, moth-
er dear;
To-morrow 'll be the happi-
est time of all the glad
new year—
Of all the glad new year,
mother, the maddest, mer-
riest day;
For I'm to be Queen o' the
May, mother, I'm to be
Queen o' the May.
—Tennyson



Drachman



Commencement Scene

Below: May Morning
Breakfast Scene



Hon. Albert Stump
Commencement speaker
Rev. J.B. Parsons
Pres. I.J. Good



A Scene from
"The Road to Yesterday"
Senior Class - 1930

Right: Commencement Procession





Commencement Week

The twenty-fifth annual commencement last year marked the largest graduating class in the college history, as ninety-four students were eligible to participate in the graduation exercises. Seventy-four received degrees for the four-year courses and sixteen were presented with the two-year normal certificates.

Commencement week was one of the busiest of the year. Open sessions were held by all the literary societies at the first of the week. A final farewell program for the Seniors was presented by the "Y" associations Wednesday night, followed by the first presentation of the Senior class play, "The Road to Yesterday."

"The Road to Yesterday" attracted a large crowd, combining settings of both to-day and the year of 1603 into a tense romantic drama. Walter Hauswald and Martha McCoy played the leading roles. The second performance Saturday evening was preceded by the annual musical recital Friday night.

The May Day pageant, "Through Twenty-five Years with I. C. C.," was an outstanding feature of the week's activities. This annual affair, in which all co-eds of the school take part, depicted the growth of Indiana Central College through its twenty-five years. Faye Findley was honored as Senior May Queen, and Bertha Lammers was crowned to succeed her. The pageant was written by Kathleen Heffley, Sophomore, Martinsville, Ill.

The noon-day alumni luncheon and annual meeting was followed by a baseball game with the Ball State nine, which the Greyhound batsmen dropped in the last innings 5 to 3.

Rev. J. B. Parsons, superintendent of White River Conference, delivered the Baccalaureate sermon in the gymnasium Sunday afternoon, June 1, at 2:00 o'clock.

The Hon. Albert Stump, Indianapolis attorney and former professor of Indiana and Butler universities, addressed the graduating class in the final commencement exercise Monday morning at 10:30. Pres. I. J. Good presented the diplomas.





*South Entrance
Administration Bldg.*

Patronize

Our Advertisers

Whose contribution to this
publication is greatly
appreciated

And Read

A BIT OF SPICE
Between the lines.

Orchestra



What! Milkmaids!



The awakening



Campus Flowers



Looks like



Curves Ahead



'Way back when



"Max"



The impossible



Mary Ellen as "Pollyanna"



Catching Crayfish



"Pals"



Prophetic or Pathetic?



If it could talk!



Freshies cleaning off paint



All feet?

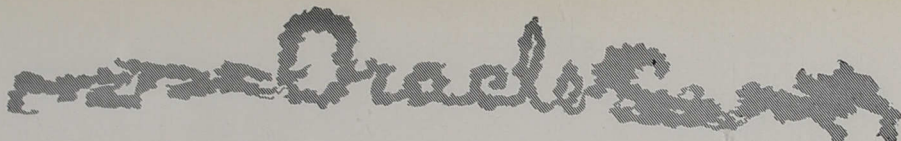


Back to the farm!



Just a bunch of fodder





FIVE YOUNG MEN

George loses his job,
David never had one,
The Twins' allowance is stopped,
And then Austin inherits a girls' school!

ROMANCE AND RIOTOUS COMEDY

You'll want to see what follows

- in -

"THE CHARM SCHOOL"

SENIOR CLASS PLAY

Directed by Leora Weimar

Kephart Auditorium

Friday and Tuesday, May 29 and June 2 — 8:00 P. M.



Say

it with artistic flowers
from Large Producers

BERTERMANN'S

241 Massachusetts Avenue

INDIANAPOLIS

Flowers Telegraphed

Riley 7535



THE MAIL PRESS

PRINTERS -- PUBLISHERS

We Print the Reflector

314 East Market Street

Phone: Lincoln 7196

INDIANAPOLIS

BAKER BROS.

FURNITURE

233 E. Washington St.

Eager: "Does Hermie borrow much from you?"

Shadley: "Does he? Why, I feel more at home in his room than in my own."

Stoneburner: "Did you ever notice, my dear, that a loud talker is generally an ignorant person?"

Mrs. Stoneburner: "Well, you needn't shout so; I'm not deaf."

Shadley: "There goes the ugliest man I know."

Virginia: "Hush, honey, you forget yourself."

Doctor: "I'm afraid I have bad news for you. You will never be able to work again."

Hatfield: "Wadda you mean, bad news?"

The rather boring young professor of history was talking to the bright young girl at a dinner party.

"Do you know, my dear," he said, "that Columbus traveled two thousand five hundred miles *al a galleon*?"

"Go on," scoffed the young lady. "You don't believe all those stories you hear about them baby cars, do you?"

Sixty-Three Years of Old Line Service

EQUITABLE LIFE OF IOWA

JOHN W. GEORGE
RI 4620—DR 7857-3

811 Board of Trade Building
INDIANAPOLIS, IND.

Also—FIRE and OLD TRAILS AUTO INSURANCE



This book is cased in an S. K. Smith cover—

Send for
information
and prices to

a cover that is guaranteed to be satisfactory and is created and SMITHCRAFTED by an organization of craftsmen specializing in the creation and production of good covers. Whatever your requirements may be, this organization can satisfy them.

THE S. K. SMITH COMPANY

213 Institute Place

Chicago

Chris: "They are now waging a vigorous battle against Malaria."

Merry: "What have the Malarians done now?"

Ethel: "I cook and bake for you and what do I get? Nothing."

Harvey: "You're lucky. I get indigestion."

A collegian, badly mangled in a train wreck, could not be identified. The clothes he was wearing came from all parts of the dormitory.

Genth: "Your suit is beginning to look rusty."

Freshley: "Yes, the tailor said it would wear like iron."

Gormley: "Yeh, I'm a big gun at school now."

Mother Gormley: "Well, then, I'd like to hear some better reports from now on."

Haramy: "If Columbus were alive today would he be looked on as a remarkable man?"

Christine: "Yes, he'd be five hundred years old."

"Complete Service"

Madison Avenue State Bank

1377 Madison Avenue, Indianapolis

UNIVERSITY HEIGHTS

Sheet Metal Shop

Niagara Hot Air Furnaces

Gutters, Down Spouts and Sheet Metal
Work of All Descriptions

J. E. Bossingham 4024 Madison Ave.

"QUALITY WILL SHOW—IT CAME FROM EM-ROE"
HEADQUARTERS
— FOR —

Finest Quality Sporting Goods

ATHLETIC SUPPLIES

SPORT EQUIPMENT

EM-ROE SPORTING GOODS CO.

209 W. Washington St.
[Opposite the State House]



Visit our exposition of bath-
room and kitchen fixtures — the
combined display rooms of a thou-
sand merchant plumbers. We will
be glad to suggest the equipment
you need.



Central Supply Company

210-238 South Capitol Ave.
Ri 2383 Indianapolis

Mrs. Solomon 1st: "Knowest thou how
to bringge uppe thye childe?"

Mrs. Solomon 2nd: "Certainly, busy-
body."

Mrs. Solomon 1st: "Then snappe to.
Thy childe is at the bottom of yon cis-
tern."

Tramp: "Please, kind gentleman, could
you help a poor blind man?"

Bookout: "How am I to know you are
blind?"

Tramp: "Because I called you a gentle-
man."

"Are you sure that was a marriage li-
cense you gave me last month?"

"Of course. What's the matter with it?"

"Well, I thought there might be some
mistake. I've been living a dog's life ever
since."

Prof. Carmony: "Waiter, there's a fly
in my ice cream."

Waiter: "Serves him right, let him
freeze."

Ramsey (after being struck by lightning):
"That's what I get for being so attrac-
tive."

KINGAN'S

"Reliable"

HAMS and BACON

Made from choice corn-fed hogs

Each piece carefully selected

Lean and fat properly proportioned

Cured by special mild-cure formula

Smoked slowly with hickory wood

Sweet, juicy and tender—delicious

KINGAN & Co.

PORK AND BEEF PACKERS

INDIANAPOLIS





Shewman: "I don't know the meaning of fear."

Kemper: "Well, I wouldn't let a little word like that stump me. Look it up in the dictionary."

Emig: "You must have a wonderful memory to keep all that knowledge in your head."

Judd: "Yes, I never forget anything when I once get it in my head."

Emig: "Well, old man, how about the five dollars I lent you some time ago?"

Judd: "Oh, that's different. I put that in my pocket."

Graduate: "I'm looking for a job, sir."

Prexy: "You look pretty good to me, but we can't afford any more help at present."

Graduate: "But I won't be much help, sir."

Smith: "Have you heard the one about the Scotchman and his oatmeal?"

Sibert: "I don't like cereal stories."

And did you hear of the girl who collected pistols and guns, because she liked to have arms around her all the time?

GOING TO TOWN?

Motor coaches leave Indiana Central every 30 minutes all day long, and every five minutes when traffic is heavy and in a hurry.

There's no other way to get to Indianapolis so cheaply, quickly, and safely.

Interstate furnishes luxurious special coaches for team trips, class journeys, band and glee club travels. Colleges are offered a specially attractive low rate making travel by coach more economical than in private cars.

For information telephone
Ri 8461, Traffic Department

Public Service Company of Indiana

(Formerly Interstate Public Service Company)

We Wish You Health and Success
Through Life



POLKS SANITARY MILK CO.

1100 E. 15TH STREET

INDIANAPOLIS



Drachman

Campus Scenes



South View of
Front Entrance



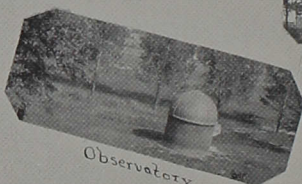
Front Entrance of
Ad. Building



South View



Gym



Observatory



Darley Hall



Residence Hall



Flaxet of Men's
Hall



Men's Hall



Luck Creek



Campus View



Honderich: "Did you hear about my terrible operation?"
Cooper: "No, what happened?"
Honderich: "Dad cut off my allowance."

Bob Durham: "Two tickets, please."
Ticket Seller: "What date?"
Bob (absently): "Ann, again."

"What are you crying about?"
"I was married last night."
"Oh, I see—your wedding mourn."

Beghtel: "Mr. Currens, how would you spell 'vallisneriaceus'?"
Jimmie: "Very poorly, sir, very poorly."

Quality Above All

HERFF - JONES CO.

INDIANAPOLIS

❖ ❖ ❖ ❖

Designers and Manufacturers

of

SCHOOL AND COLLEGE JEWELRY

and

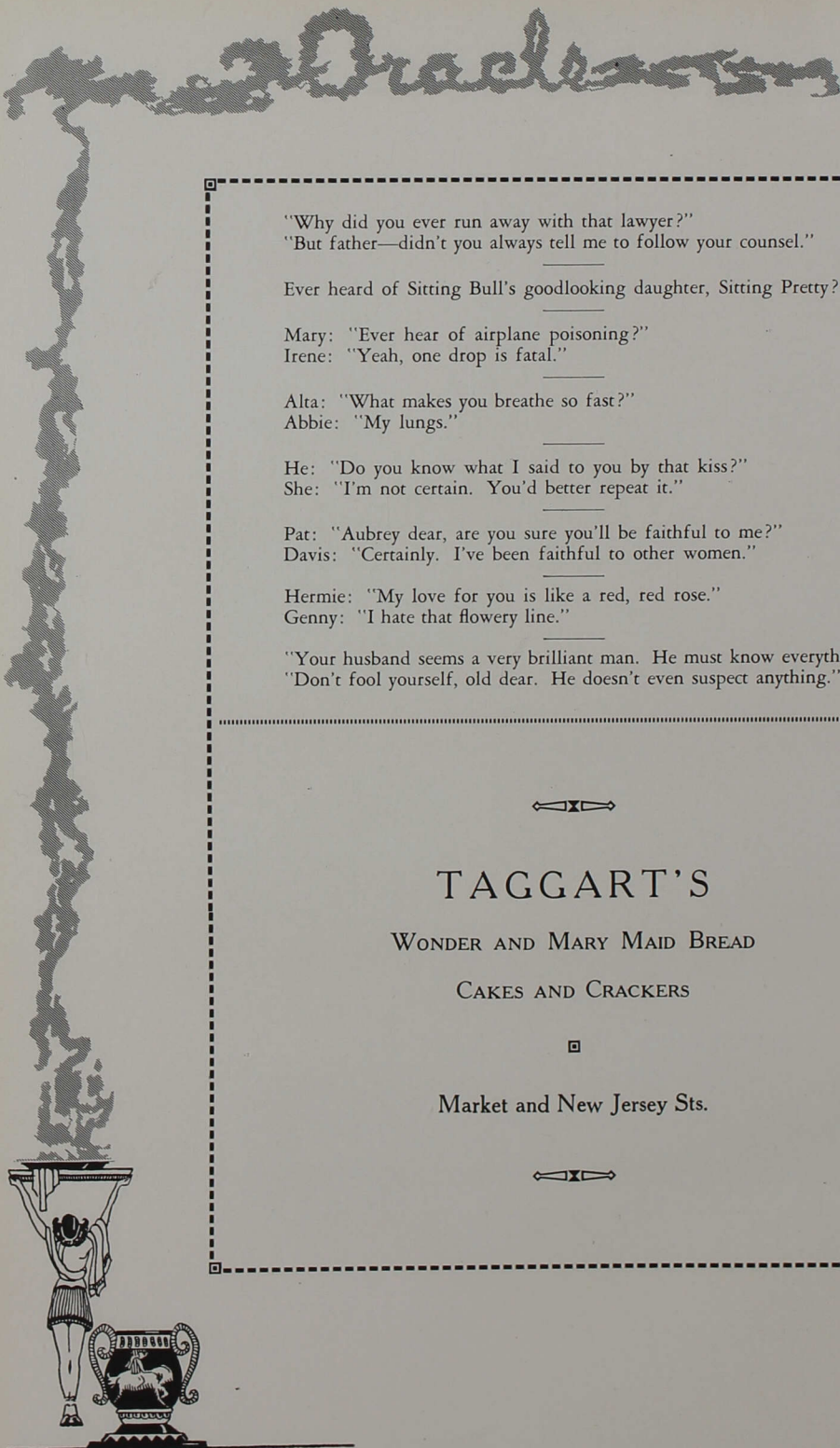
COMMENCEMENT INVITATIONS

❖ ❖ ❖ ❖

Official Jewelers to

Classes of 1926, '27, '28, '29, '30, '31





"Why did you ever run away with that lawyer?"
"But father—didn't you always tell me to follow your counsel."

Ever heard of Sitting Bull's goodlooking daughter, Sitting Pretty?

Mary: "Ever hear of airplane poisoning?"
Irene: "Yeah, one drop is fatal."

Alta: "What makes you breathe so fast?"
Abbie: "My lungs."

He: "Do you know what I said to you by that kiss?"
She: "I'm not certain. You'd better repeat it."

Pat: "Aubrey dear, are you sure you'll be faithful to me?"
Davis: "Certainly. I've been faithful to other women."

Hermie: "My love for you is like a red, red rose."
Genny: "I hate that flowery line."

"Your husband seems a very brilliant man. He must know everything."
"Don't fool yourself, old dear. He doesn't even suspect anything."



TAGGART'S

WONDER AND MARY MAID BREAD

CAKES AND CRACKERS



Market and New Jersey Sts.



Every day more people say QUICK TIRE
Better prices, better quality, and better service cannot be
found in Indianapolis.

Quick Tire Service, Inc.

936 N. Meridian

Distributors of

U. S. TIRES *and*

QUICK TIRE BATTERIES

GASOLINE, OIL, AND COMPLETE LUBRICATION

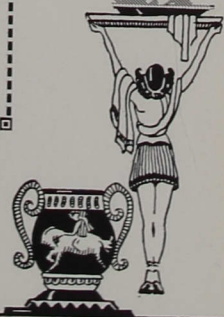
KO-WE-BA

QUALITY FOOD PRODUCTS

THE CUP DELICIOUS

IMPORTED, MANUFACTURED,
AND
DISTRIBUTED
BY

KOTHE, WELLS & BAUER CO.
INDIANAPOLIS — KOKOMO — WABASH



Oracles

In - one

by
one

Out - two

by
two



More



Campus



Scenery



Drac

INDUSTRIAL MILL WHITE

NU-DA HOUSE PAINT

DRI-BRITE WAX

IRON-AGE GRAPHITE PAINT

ARDMORE COTTAGE COLORS

NU-DA ENAMEL

AD-ONE SEMI-PASTE

CAPITAL CITY PAINT

EASY GLOSS FURNITURE POLISH

NU-DA CLEAR VARNISH

TRAFFIC PAINT

RAPID PAINT & VARNISH REMOVER

ARDMORE BARN PAINT

LONG-LIFE SPAR VARNISH

"GOOD GOODS"

INDIANAPOLIS PAINT AND COLOR
COMPANY

Indianapolis



Indiana's Largest Dry Cleaners

GARMENTS RUGS CURTAINS DRAPERIES

GREGG & SON, INC.

Pickup and
Delivery Service

Cash and Carry
Service

Goodness!

-- Plant --

DREXEL

Gracious!

1004 MADISON AVENUE

5050

Greggorize!

UNIVERSITY PRESS

Book and Job Printing
"of Distinction"



1207 Edwards Ave.
(University Heights)
Indianapolis

*"If it's a Laundry or Dry
Cleaning Service, We Have It"*

Riley 7373

INDIANA'S LARGEST LAUNDRY

Progress
the Soft Water LAUNDRY

430 EAST MARKET STREET

"You can say all the mean things about Jack that you want to, but you'll have to admit he's a good loser."

"Oh Yeah. Well, practice makes perfect."

She's so dumb, she thinks the hyphen in "bird-cage" is for the bird to sit on.

Huppert: "I'm a terrible ladies' man."
Lamm: "Well, whadaya wanna hang around terrible ladies for?"

Max Bell: "I can't eat this steak. Call the manager."

Waiter: "It's no use. He won't eat it either."

Photographer: "Do you want a large or small picture?"

Elzie: "A small one."

Photographer: "Then close your mouth."

Sherrill: "I'm not myself to-day."

Bosserman: "No matter who you are now—you made a good change."

"Your teeth are like pearls."

"Indeedy they're not. Pearl can take hers out every night and I can't."

Compliments of

The Pants Store Co.

"Ready-to-Wear Trousers for
Every Purpose"

48 West Ohio St. Phone RI. 2616

**SOUTHPORT LUMBER
COMPANY**

The Builder's Store

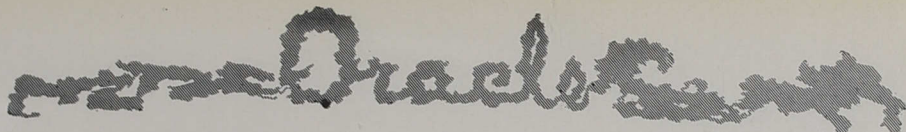
Southport, Ind.

- Phone -

Southport 3

"Only Eight Miles South of the Circle,
Just East of Madison Road"





OSCAR D. LUDWIG, M. D.

Office Hours: P. M., 2:00-4:00; 7:00-8:00

Sundays by Appointment

5433 Madison Avenue at Epler

Indianapolis, Indiana

PHONE: SOUTHPORT 143

"Isn't your little son sweet? He told me I was pretty."
"Did he? I must take him to an oculist."

"What are you doing at this party?"
"I'm looking for my husband."
"What's his name?"
"I don't know yet."

Pauline Riley, upon arriving home from college: "Yes, Father, I know you'll like Gordon. He's such a wonderful young man."

Mr. Riley, looking interested: "Has he any money?"

Pauline: "Oh, Dad, you men are all alike. You're so curious. Gordon asked me the same thing about you."

Rhoades: "And what did you tell your dad when he suggested you go to work in a drug store?"

Huckriede: "I said it was a vial occupation."

She asked for a book on what every young girl should know before marriage—and to her great consternation was handed a cook book.

M. B. PAYNTER, M. D.

SOUTHPORT, INDIANA

PHONE 142

Office Hours: P. M.—2-4; 7-8

Sundays by Appointment

Community Shoe Repairing

We Solicit Student's Trade

JOHN REED

1406 Castle Avenue

BUY CHEVROLET FOR ECONOMICAL TRANSPORTATION
— FROM —

KELLY SALES CO.

Telephone No. 10

Ask About Our Service

Greenwood, Ind.

IF YOU ARE GOING TO BUILD NEW OR REPAIR—CALL
GREENWOOD LUMBER COMPANY

Cement

Lime

Plaster

Builders' Hardware

Telephone: 196—Reverse Charge

GREENWOOD, INDIANA



Fashion Tailored Clothes for Men

*Are Correctly Styled
of 100% Woolen Fabrics
And Guaranteed*

\$21⁵⁰



—Sears' Clothes are the result of a determination to produce the greatest clothing values in America at a popular price. Style, quality, and workmanship are the outstanding features in Fashion Tailored Clothes. Sears' price tells its own story of economy.

Fabrics are given a double test—boiling and acid. Not a thread of cotton is permitted in Fashion Tailored Clothes.

Warp, filling, and lining are given a thorough test for strength and durability. All fabrics are subjected to a color Fade-o-meter test. Then comes the test for shrinkage.

Fashion Tailored Clothes are comparable to suits sold elsewhere at \$30. Smartly styled—perfect fitting. Navy blue and the latest novelties.

SEARS, ROEBUCK AND CO.

WE GUARANTEE SATISFACTION OR YOUR MONEY BACK

Massachusetts Avenue at Alabama Street



Drach

Don't Worry—

We Hurry!



"Bill"

"Claude"

"Bill"

Service With a Smile!

WE SERVICE I. C. C. CARS

REPAIRING, TIRES, ACCESSORIES,

BATTERY SERVICE, AND TOWING

BAKER BROS. GARAGE

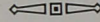
4015 Madison Ave.

Phone, DRexel 3656



Unlimited Variety

at moderate prices



A single piece of furniture may easily cost far more than a new ceiling fixture, yet contribute less to the modernizing of a living room. A good rug whose very beauty will go for naught in poor lighting will cost as much, in many cases, as modern fixtures for every room in the home. Prices of well designed lighting fixtures, table and floor lamps today are surprisingly moderate and the variety and interest of new designs now available will astonish you.



Indianapolis Power & Light Company

48 Monument Circle

Bring Your Head to Krause Bros.

- for -

A NIFTY CAP OR HAT AT SAVING PRICES
WE CAN TAKE CARE OF YOU FROM YOUR SOCKS UP



"The Store for Values"



KRAUSE BROS.

"Court House Is Opposite Us"

Indianapolis



Alumni Directory

Achor, Harold E., '28—Bloomington, Ind.—Student.

Albright, Marguerite Brockschmidt, '28—Cayuga—Teacher (housewife).

Alford, Carl, '30—Indianapolis, Ind.—Y. M. C. A.

Alger, Doris, '29—Fairmount Orphans' Home—Alliance, Ohio.

Allen, Irene, '28—Palestine, Ill.—Teacher.

Armstrong, Helen M., '28—Warsaw, Ind.—Teacher.

Ashmore, Mabel I., '30—Noble, Ill.

Babbitt, Paul E., '29—Dayton, Ohio—Minister.

Bailey, Mabel E., '29—Monroeville, Ind.—Teacher.

Bailey, Paul L., '29—I. C. C.—Commercial Art.

Ballard, Bess M., '29—Hysham, Mont.—Teacher.

Barkley, Wm. L., '30—Linton, Ind.—Minister.

Barnhizer, Pauline, '29—Alliance, Ohio—Fairmount Orphans, Home.

Barrick, Milford, '28—Indianapolis, Ind.—Y. M. C. A.

Beck, Ruth L., '28—Rochester, Ind.—Teacher.

Benson, Georgia I., '29—Franklin, Ind.—Teacher.

Bilby, Margaret Haworth, '28—Canton, Ohio—Teacher (housewife).

Bilby, P. M., '28—Canton, Ohio—Minister.

Bish, Wm. Everitt, '30—Marion, Ind.—Student.

Bixler, P. M., '30—Indianapolis, Ind.—Student.

Blakney, Mrs. Carolyn, '28—Westfield, Ill.—Teacher.

Bookout, Clarence H., '30—Indianapolis, Ind.—Accountant, I. C. C.

Borchers, Herman E., '29—Chicago Hts., Ill.—Chemist.

Brandenburg, Craig, '30—Paoli, Ind.—Minister.

Branson, V. M., '28—Frankfort, Ind.

Breneman, Raymond, '30—Bloomington, Ind.—Student.

Breneman, Mary Alice, '30—Macey, Ind.—Teacher.

Brengham, Esther Snyder, '28—Corydon, Ind. (housewife).

Bright, Arthur J., '29—Cadiz, Ind.—Teacher.

Briscoe, Lillian, '28—Westfield, Ill.—Teacher.

Carmony, Donald, '29—I. C. C.—Instructor.

Carver, Floy E., '29—Wabash, Ind.—Teacher.

Chrysler, Clare, '28—Sandborn, Ind.—Teacher.

Clarno, Clarence C.—Winslow, Ill.—Teacher.

Coake, Orville O., '28—Danville, Ill.—Engineer.

Cooper, Emil, '30—Bloomington, Ill.—Student.

Copeland, Randolph, '30—East Chicago—Chemist.

Cornet, E. E., '30—Elkhart, Ind.

Curk, Ralph D., '28—Dayton, Ohio—Teacher.

Daniel, Raymond S., '30—Dayton, Ohio—Seminary Student.

Davidson, Harry R., '28—Tell City, Ind.—Teacher.

Deck, Lee, '28—Fordsville, Ind.—Teacher.

Deck, Mildred Odum, '28—Fordsville, Ind.—Housewife.

DeWeese, Pearl, '30—Flora, Ill.

Dumph, Lorene, '28—Bremen, Ind.—Teacher.

Dunbar, Leila, '29—Odon, Ind.—Teacher.

Dunn, Ellis M., '29—Indianapolis.

Dawson, Hazel F., '28—Highwood, Ill.—Teacher.

Dye, Walter E., '28—Lincoln, Neb.—Minister.

Eastridge, Omer W., '29—West Lafayette, Ohio—Teacher.

Eaton, C. A., '28—Dayton, Ohio—Minister.

Eiler, Thelma, '30—Rochester, Ind.

Ellis, Chester H., '29—Russiaville, Ind.—Teacher.

Emmert, Alfred L., '28—Dayton, Ohio—Minister.

Eviston, Eloise, '29—New Salem, Ind.—Teacher.

Ewert, W. H., '28—Lexington, Ill.—Minister.

Fawley, P. L., '29—Roberts, Mont.—Teacher.

Findley, Faye, '30—Williamsburg, Ind.—Teacher.

Ford, Russell, '30—Terre Haute, Ind.—Minister.

Franklin, Bernie, '30—Wawaka, Ind.—Teacher.

Fulp, Bennett, '28—Indianapolis, Ind.—Pastor.

Garwood, Hilda M., '29—Albion, Ind.—Teacher.

Girton, Wm. R., '30—Indianapolis, Ind.

Glassburn, Orvel, '30—Economy, Ind.—Teacher.

Good, Julia, '30—Indianapolis—Student.

Grovenor, A. P., '30—Bloomington, Ind.—Student.

Hancock, Gladys, '30—Greenfield, Ind.

Haramy, Shukry J., '28—Jerusalem, Palestine—Teacher.

Harrell, J. H., '28—Cory, Ind.—Minister.

Harvey, Pauline Sharpe, '28—Chesterton, Ind.—Housewife.

Harvey, Raymond W., '28—Chesterton, Ind.—Teacher.

Hatfield, R. D., '30—Terre Haute, Ind.—Salesman.

Hauswald, W. E., '30—Beardstown, Ill.—Teacher.

Hawkins, J. O., '28—Casey, Ill.—Teacher.

Hayter, R. C., '29—Indianapolis—Laborer.

Heaberlin, Alberta Wolf, '28—Russell, Ky.—Teacher.



INSURANCE FOR CHURCH MEMBERS

Clergymen or Laymen



Organized 1912. Incorporated under Insurance Laws of Indiana. Full legal reserve maintained. Life Insurance from \$500 to \$5,000. We write term Life, Ordinary Life, 20-Pay Life, 20-Year Endowment, Endowment at 65, and Endowment at 70. Disability and Double Indemnity may be included for a nominal cost in all policies, excepting Term Insurance. We issue a Single, Double, or Triple Accident and Health Policy with or without Burial Insurance. Sickness Benefits \$5.00 to \$31.50 per week, Accident Benefits \$5.25 to \$41.25 per week, Accidental Death Indemnity \$200 to \$7,500. \$100 to \$500 Burial Insurance may be included in Health and Accident Policy or issued separately, cost is nominal. Membership Fee, \$3.00 Single Policy, \$5.00 Double, \$7.00 Triple, with or without Burial Insurance pays cost first three months. Terms to clergy men.

For particulars write us, giving date of birth

Address

Church Members Relief Association

J. K. Ake, President

827-30 Occidental Bldg.

Indianapolis, Ind.

Printing of Quality

Is a Regular Product of

CENTRAL PUBLISHING COMPANY

546 South Meridian St.

INDIANAPOLIS, IND.

Call us at Riley 3030 for an estimate upon your work.

Our ideas may be helpful in your planning.



Drach

Hearwole, Woodie, '28—Akron, Ohio—Deaconess.

Herrin, Homer, '28—Mt. Carmel, Ill.—Minister.

Hiatt, Mary, '29—Dayton, Ohio—Teacher.

Hornberger, Lucille, '30—Vermillion, Ill.

Hottel, F. M., '28—Winchester, Ind.—Teacher.

Howard, C. E., '30—Dayton, Ohio—Seminary Student.

Howe, Margaret, '29—Wood River, Ill.

Humbert, Kenneth W., '29—Saginaw, Mich.—Teacher.

Inman, George, '30—Vincennes, Ind.—Teacher.

Jensen, Dorothy, '29—Albany, Ind.—Teacher.

Jensen, Kenneth H., '28—Odon, Ind.—Teacher.

Johnson, Eleanor, '30—North Vernon, Ind.—Teacher.

Johnson, Muchycle, '30—Bloomington, Ind.—Student.

Johnson, Phyllis, '29—Canton, Ill.

Jones, J. A., '30—Greenville, Ill.—Teacher.

Kek, Anna Dale, '28—Indianapolis—I. C. C.

Kek, Evan R., '30—Indianapolis, I. C. C.

Key, Amza, '29—Georgetown, Ind.—Teacher.

Key, Sheldon, '29—Indianapolis—Newspaper work.

Killion, Evelyn Mae, '30—Winslow, Ind.

Kirk, Raymond, '29—Stockwell, Ind.—Teacher.

Krider, P. A., '28—Akron, Ohio—Minister.

Kunkel, Esther, '30—Waynetown, Ind.

Lemme, Earl F., '29—Kennard, Ind.—Teacher.

Line, Olive, '30—Indianapolis—Teacher.

Lively, Gladys M., '29—Mendon, Ill.—Teacher.

Long, Blanche Ada, '28—Indianapolis.

Long, Beulah Shaw, '28—Peru, Ind.—Teacher.

Longenbaugh, Vern, '28—Macomb, Ill.—Minister.

Lowry, G. E., '30—Southport, Ind.

Lynch, Eva Mae, '28—Fairmount, Ill.—Teacher.

McAhren, Geo. H., '29—Dayton, Ohio—Minister.

McAhren, Harriette Gillingham, '29—Dayton, Ohio.

McCormick, D. H., '28—Washington, Ind.—Minister.

McDonald, Pauline, '29—Linton, Ind.

McIntyre, Augusta, '29—St. Paul, Ind.—Teacher.

Mahin, A. R., '30—Otterbein, Ind.—Teacher.

Martin, Frances, '28—W. Lafayette, Ind.—Teacher.

Martens, J. Louis, '30—Bloomington, Ind.—Student.

Mendenhall, Clara, '28—Dallas City, Ill.—Teacher.

Merryman, K. K., '28—Dayton, Ohio—Minister.

Messer, May, '29—Wabash, Ind.

Middleton, Gerald, '29—Bloomington—Student.

Miller, Edna, '28—Lebanon, Ohio—Governess.

Miner, Wallace, '29—Union City—Teacher.

Montgomery, Herbert, '30—Southport, Ind.—Teacher.

Morgan, Mary Elizabeth, '30—Indianapolis.

Moyer, Grace, '28—Laketown, Ind.—Teacher.

Mylin, Maynard, '28—Marion, Ind.

Nall, J. Kephart, '29—Sheridan, Ind.—Teacher.

Orr, Wilma, '28—DeSoto, Ind.—Teacher.

Parker, Clifford L., '30—Bloomington, Ind.—Student.

Parker, Esther, '28—Butler, Ind.—Teacher.

Parks, C. E., '28—Hartford City, Ind.—Minister.

Parsons, Esther E., '30—Indianapolis, Ind.—Student.

Parsons, Hope Taylor, '28—Sierra Leone, West Africa—Missionary.

Parsons, J. M., '28—Dayton, Ohio—Minister.

Parsons, Karl, '28—Moorhead, Minn.—Student.

Patton, Helen Phipps, '28—Nashville, Ind.—Teacher.

Patton, Howard, '28—Bloomington, Ind.—Scout Commissioner.

Pellet, Winifred, '30—Indianapolis, Ind.

Perkins, Genevieve Washburn, '30—Indianapolis, Ind.—Housewife.

Perkins, L. L., '28—Indianapolis—Teacher.

Proctor, Clara E., '28—Washington, Ind.—Teacher.

Purcell, Kathryn, '30—Carlisle, Ind.

Quackenbush, Cloyce, '29—Orleans, Ind.—Teacher.

Ragains, Corrine Snyder, '28—Zionsville, Ind.—Teacher.

Ragains, J. M., '29—Lizton, Ind.—Teacher.

Ragains, Lillian, '28—Indianapolis—Teacher.

Ragains, R. A., '28—Zionsville, Ind.—Teacher.

Rapp, Virga M., '30—Dayton, Ohio.

Ray, Mamie, '30—Philpot, Ky.

Reese, Clifford, '30—Muncie, Ind.—Student.

Reese, C. E., '28—Brownsburg, Ind.—Teacher.

Richard, Avyce L., '29—South Whitley, Ind.—Teacher.

Rice, Gladys, '30—Crawfordsville, Ind.

Rivir, Lowell, '28—New Augusta, Ind.—Teacher.

Rivir, Verda, '30—Remington, Ind.

Sackmire, Harold M., '29—Aurora, Ind.—Teacher.

Saulo, Julio, '28—Santa Rosa, Nueva Ecya, Philippine Islands—Plantation Manager.

Schmidt, Nora E., '28—Tyner, Ind.—Teacher.

Scholl, H. E., '29—Dixon, Ill.—Student.

Scull, David L., '29—New Middletown, Ind.—Minister.



Shewmon, Joe, '30—Terre Haute, Ind.—Advertising.
 Shirley, Mildred, '28—Allendale, Ill.—Teacher.
 Shrigley, Irene, '29—Dunkirk, Ind.—Governess.
 Sickafoose, Paul, '30—Elkhart, Ind.—Accountant.
 Sims, Melba, '30—Frankfort, Ind.—Teacher.
 Smith, Elmer, '29—Piqua, Ohio—Minister.
 Smith, Eugene, '30—Loda, Ill.
 Smith, Oscar, '30—N. Madison, Ind.—Teacher.
 Smith, R. D., '28—Peru, Ind.—Minister.
 Childs, Winifred S., '28—Matthews, Ind.—Teacher.
 Stine, Freda Rider, '28—Dayton, Ohio—Teacher.
 Stine, Katherine, '30—Villa Grove, Ill.—Teacher.
 Stine, Lorin S., '29—Dayton, Ohio—Minister.
 Sutton, Verna, '29—Alliance, Ohio—Child Welfare Worker.
 Thompson, Clara La Vonne, '29—Tangier, Ind.—Teacher.
 Thompson, John M., '29—Indianapolis, Ind.—Manager, Hanover Shoe Store.

Tienken, Ida, '28—Quincy, Ill.—Teacher.
 Tinnerman, Audrey, '28—Dayton, Ohio—Teacher.
 Tobias, Joyce, '30—Remington, Ind.—Teacher.
 Traylor, Eva, '30—Petersburg, Ind.
 Turner, Vera Arbogast, '29—Pittsboro, Ind.—Teacher.

Vance, Dave, '30—Deputy, Ind.—Teacher.
 Varner, Fanny, '28—Butler, Ind.
 Velander, Ruby, '30—Vermillion, Ill.

Weber, J. A., '29—Dayton, Ohio—Minister.
 Whitecotton, Earl B.—Elkhart, Ind.
 Williams, Amos, '28—Dayton, Ohio—Minister.
 Williams, Clyde L., '30—Paoli, Ind.—Teacher.
 Wilson, Alberta, '30—Fortville, Ind.
 Wilson, Oscar, '30—Wabash, Ind.
 Wilson, Zoe F., '30—South Bend, Ind., Librarian.
 Wohlford, Ralph, '29—Anchor, Ill.—Teacher.
 Wolfe, R. M., '29—Urbana, Ill.—Student.

York, A. W., '28—Dayton, Ohio—Minister.
 Young, Wm., '29—Dayton, Ohio—Minister.

COMMERCIAL SERVICE COMPANY

♦♦ A MODERN PRINTING ESTABLISHMENT SKILLFULLY MANNED.
 A COMPLETE SERVICE IN—
 LAYOUT - ART - ENGRAVING - COPY
 TYPOGRAPHY - PRINTING AND BINDING - ALL WITHIN OUR OWN PLANT
 NOT "CHEAP" PRINTERS BUT ECONOMICAL

♦♦
 FIFTH AND CHESTNUT STREETS
 ANDERSON, INDIANA

GOSPEL TRUMPET COMPANY BUILDING
 ♦♦





WE ARE PROUD of the fact that we are among the chosen craftsmen privileged to display this emblem in our studio, and use it in our solicitations.

This is an indication that we have subscribed to the exacting standards of the Photographers Association of America; an indication of outstanding ability, plus unquestioned business integrity.

“Thank You!”

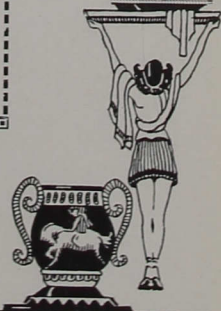
Just a little message to tell you that we deeply appreciate the privilege of fashioning these photographic portraits.

We thank you for your confidence and kindly cooperation. And you will, we feel, thank us increasingly each year for having created so faithful a likeness.

VOOHRIS STUDIO

611 N. Illinois St.

Indianapolis



Constantly Searching



FOR centuries astronomers have looked into the skies searching for new worlds, constellations and stars. Aside from their interesting research work, they have learned much that is of practical scientific value.

Similarly, in the field of student publications, the Indianapolis Engraving Company searches constantly for new ideas, plans and methods that will assist year-book staffs to publish successfully books characteristic of their school and community. The results of these efforts are gratifying.

The Annual Planning and Designing Department welcomes your inquiries for further information.

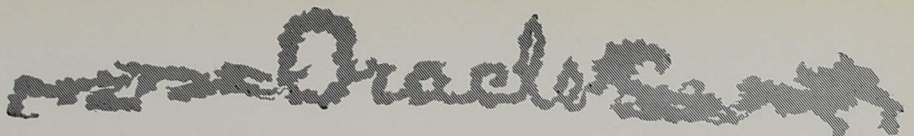
Established 1895

INDIANAPOLIS ENGRAVING COMPANY

Department of Annual Planning and Designing

INDIANAPOLIS, INDIANA





Individual Student Index

SENIORS

- Achor, Homer—15, 16, 63, 65, 67
Aeppli, Virginia—16, 57, 59, 69
Bailey, Leonard—17, 66, 50
Bechtolt, Carol—16, 56, 57, 68
Berdel, Margaret—17, 63
Borchers, Charles—17, 67
Casterline, Beatrice—15, 17, 59, 65, 69
Coldren, George—16, 64
Daggy, Nila—14, 18, 59, 68
Dunham, Helen—14, 64, 69
Durham, Robert—19, 41, 42, 44, 56, 57, 63, 66, 70
Findley, Albert—18, 63, 66, 70, 46
Forney, Helen—18, 65, 69
Fouth, Hazel—19, 64, 69
Garwood, Leone—21, 56, 57, 68
Gelback, Robert—26
Gibson, Arville—14, 57, 64, 70
Good, Lowell—18, 39, 40, 60, 63, 70
Gormley, John—20, 56
Gorvie, Max—21, 64, 65, 70
Hammersley, William—20
Honderich, Lester—22, 59, 65, 67, 51
Huddleston, Chris—15, 21, 43, 44, 53, 66, 70
Huppert, Delmar—22, 57, 57, 59, 64, 67
Jackson, Vesta—20, 65, 66, 69
Kerr, Maurice—23, 60
Lamm, Myron—23, 39, 61, 66, 67
Lammers, Bertha—20, 68, 77
LeRoy, Ernest—14, 23, 62, 63, 64, 65, 67, 46
Lewis, Jeane—21, 63, 69
Martin, Eunice—14, 26, (picture 29), 57, 69
McConnell, Gertrude—24, 61, 64, 69
Miller, Orville—24
Noblitt, Alma—22, 61, 69
Noel, Ruth—23, 57, 64, 65, 69
Pemberton, Veolada—26, 68
Petty, Dorcas—14, 22, 59, 66, 68
Rider, Herman—26, 37, 42, 44, 38, 50
Ross, Howard—24, 40, 47, 66, 38
Scott, Marjorie—25, 56, 57, 69
Shafer, Ardis—24, 60, 61, 69
Shewman, George—25, 62, 65, 67
Sibert, Marvin—26
Vialpando, Robert—25, 67
Wertz, Lawrence—26, 61, 70
Young, Beatrice—15, 59, 69

JUNIORS

- Arford, Louise—28, 69
Bosserman, Roy—28, 65, 70
Brocksmith, Margaret—28, 68
Burchard, Benjamin—70
Carter, Donald—
Carter, Hazel—28, 68
Cobb, Heedlie—28, 59, 61, 70
Cook, Mary Elizabeth—28, 56, 57
Crouch, Harley—28
Dalton, Christine—28, 60, 69
DeMeyer, Arthur—28, 56, 70
Dickinson, Edna—14, 28, 56, 57, 65, 69
Donaldson, Genevieve—28, 57, 59, 68
Franklin, Esther—28, 64, 68
Garvin, Arthur—29
Griffin, Beulah—29, 69
Hiatt, Ralph—14, 29, 64, 67
Horlacker, Evelyn—29, 57, 65, 68
Key, Dorothy—29, 64
Klopp, Donald—64, 70
Krouse, Harriett—29, 57
Mellish, Paul—
Milhouse, Paul—29, 56, 61, 65, 70
Miller, Raymond—29, 59, 62, 65, 70
O'Dell, Ralph—27, 29, 59, 61, 62, 65, 70
Osgood, Bessie—14, 29, 60, 64, 69
Ramsey, Glenn—14, 29, 56, 59, 66, 70, 51
Rhodes, Arthur—30, 59, 61, 66, 70
Riley, Pauline—30, 59, 70
Roberts, Taylor—30
Shadley, Maurice—30, 56, 58
Shambaugh, Mary E.—30
Sherrill, Paul—30, 59, 61, 70
Slabaugh, J. Ross—40, 70, 52
Smith, Harold—40, 42, 44, 66, 67, 38, 50
Smith, Marcelle—30, 68
Taylor, Lois—30, 59, 66, 68
Taylor, Samuel—30
Wagener, Ruth Ann—30, 57
Walker, Glee—30, 57, 60, 62, 64, 65, 68
Walters, Francis—30
Welbaum, Robert—30, 38
Weller, Lena—64, 68
Williams, Norman—
Windhorst, Robert—30, 67

SOPHOMORES

- Abdon, Russell—32, 56
Aeppli, Virginia—32, 57, 69
Ahl, Ella—64
Bell, Evelyn Grace—32, 69
Berger, Alta—32, 65, 69
Bixler, Henrietta—32
Breedlove, Elizabeth—32, 57, 69
Brooks, Thelma—
Burch, Opal—32, 53, 57, 69
Burwell, Abbie—32, 69
Campbell, Francis—
Carmony, Irene—32, 69
Carpenter, Hazel—32, 57, 64
Chambers, Irma—32, 56, 57, 69



Drachmen

Cherry, Ruth—32, 68
 Cook, Lucille—14, 32, 57, 66
 Cook, Robert—67
 Cosselman, Robert—32, 56, 57, 58
 Cramer, Elizabeth—32
 Cramer, David—32, 64, 66, 90
 Davis, Alice—32
 Davis, Aubrey—40, 67
 Dewsnap, Hilda—32, 69
 Dolby, George—32, 70
 Emig, Harold—44
 Enyart, Robert—65, 70
 Featherstone, Florence—
 Fink, Merideth—56, 64
 France, Gordon—32, 42, 44, 67
 Gault, Edgar—14, 32, 70
 Gettinger, Elsie—
 Gillingham, Loyd—32, 40
 Griffith, Ruth—32, 57
 Hagelskamp, Edith—
 Hague, Virgil—32, 56, 57, 58, 65, 67
 Hiatt, Irene—32, 64, 68
 Huckriede, Paul—65, 67
 Huddleston, Mary—32, 69
 Jackson, Dwight—
 Jackson, Olive—32, 68
 Johnson, Glenn—67
 Jones, Olive—32
 Judd, Albert—43, 44, 66
 Kammerling, Olive—
 Kaiser, Shelton—32
 Keller, Maxine—
 Kemper, Mary E.—32, 60, 68
 Kennel, Lucille—32
 Killion, Frances—
 Koehrn, Fred—32
 Koffman, Lela—33
 Kurtz, Jennette—33
 Lashbrook, Mary—
 Lee, Lowell—14, 33, 70
 Leland, Marietta—33, 65, 68
 Lemme, Ronald—33, 66, 38, 50
 Lightle, Maxine—33, 68
 Lineback, Charles—
 Linson, Violet—33
 Longacre, Hulda—33, 53, 65, 68
 Lutes, Francis—33
 McAra, Florence—
 McEowen, Florence—33, 57
 Miller, Ruth—33, 53, 57, 65, 69
 Moore, Delmar—39, 40, 47, 66, 67
 Moudy, Nedra—33, 57, 61, 69
 Noblitt, Frances—33, 65, 69
 Nicodemus, Daniel—56, 57
 Patton, Laura C.—68
 Petty, Mary E.—33, 53, 57
 Phares, Freda—33
 Poe, Ernest—33, 65, 66, 50
 Probst, Nora—33, 57, 59, 68
 Rife, Mae—33, 57, 68
 Roberts, Clarence—33, 70
 Samuelson, Margaret—33
 Scholl, Rosa—33, 68
 Shaw, Margaret—68
 Skinner, Olive—33
 Small, Irma—33
 Schade, Edgar—33
 Schmidt, Helen—33
 Shumaker, R. A.—33
 Sprague, Julia Ann—66, 69
 Stech, Victor—39, 67
 Swan, Orville—43, 44, 47, 66, 70
 Thompson, Dwight—33, 59
 Wallace, Frances—14, 33, 56, 57
 Ward, Alva—33, 70
 White, Mary—33
 Wilson, Junior—33, 42, 44, 67
 Wolff, Caroline—33, 57, 59, 61, 69
 Wolland, Effiebell—33

FRESHMEN

Adams, Grace—34, 57, 69
 Ankney, Paul—34
 Arford, William—34
 Bachtel, Virginia—34, 57, 69
 Baldwin, Mildred—53
 Banta, Anna—34
 Belden, Frances—34, 53, 68
 Bell, Max—34, 56, 66, 67, 52
 Bettner, Monroe—34
 Biggs, Merle—34, 53, 57, 69
 Blackman, Elizabeth—69
 Bower, Esther—34, 53, 68
 Brice, Kenneth—34, 56, 58
 Brown, Claude—34
 Burkhart, Noble—34
 Carter, Robert—34, 56, 70
 Chambers, Winifred—34
 Chiddister, Dellos—34, 56
 Childs, Oliver—34, 40
 Clements, Agnes—34, 53, 69
 Clements, Darline—34, 57, 69
 Clouse, Merry—34, 53, 66, 68
 Cooper, Hugh—34
 Cornelison, Paul—34, 40, 70
 Cramer, Catharine—34
 Cummings, Esta—34, 65
 Dezarek, Frances—34
 Doolittle, —39, 40
 Ducker, Mary E.—34, 65
 Eickmann, Josephine—34
 Elzey, Arnold—34, 57, 58
 Fears, Marie—34
 Freese, Lloyd—40
 Fredenberger, Ruth—34
 Freshley, Harold—34, 40
 Fulwider, Eleanor—34, 53, 68
 Fuller, Alma L.—34, 68
 Genth, Noel—34, 43, 44, 52
 Gilbert, Robert—34, 57, 67
 Goss, Alberta—34
 Guthrie, Mary—53, 65
 Hael, Kathryn—35, 53, 68
 Haight, Clarence—34
 Harmon, Harry—35
 Hatfield, William—43, 44
 Head, William—35, 57



Diado

Hiatt, Herbert—35, 67
 Hicks, Grace—35, 68
 Hill, Adie—35
 Hoth, Mary—35, 53, 68
 House, Walter—35, 56, 70
 Lake, Robert—35
 Leland, Louise—35, 53, 68
 Lightle, Mildred—35
 Linson, Ray—35, 39, 43, 44
 Logan, Dorothy—35, 53
 McCallister, George—35, 40, 67
 McKelfresh, Lois—35, 56, 69
 McNabb, Margaret—35, 65
 Miller, Anna—35, 53, 57, 60, 68
 Miller, John—
 Millikan, Dorothy—35, 53, 57, 64
 Mouer, Sara Roda—35
 O'Dell, Glenn—35, 57, 60, 52
 Owens, David—67
 Partridge, Donald—35, 70
 Pickens, Coleman—42, 44
 Pownall, Roy—35, 58

Reed, Maxine—35, 57, 69
 Richter, Kenneth—
 Sholer, Helen—35, 57, 69
 Scholl, Helen—35, 68
 Schoonover, Robert—35, 56, 57
 Seacat, Prentice—35, 56, 52
 Shannon, Emma—35
 Shelton, Marie—35
 Sibert, Beula—35, 53
 Simler, Wilma—35, 53, 69
 Simon, Ansel—35, 70
 Simon, John—46, 38
 Smith, Helen Jane—35, 53, 60, 69
 Swift, Alva—35
 Tohill, Dorothy—35
 Tripplehorn, Irene—64
 Veach, Helen—35, 53, 69
 Villars, Mary—35, 53, 56, 69
 Weimar, Mary Ellen—35, 68
 Whitaker, Marshall—36, 52
 Walts, Alice Fay—35

This
 and
 That



In Closing

We, the staff, wish to express our gratitude to all those who have helped in this publication. We have tried to bind between its covers those things of Indiana Central life that will in after years recall your happiest and richest hours spent here. We are not satisfied with the work we have done. There are many things we would like to have added and some that perhaps we would like to change, but time and expense do not permit it.

We wish to particularly thank the following:

Dr. W. P. Morgan, faculty advisor, for his splendid cooperation in giving timely advice and suggestions.

Noble Ropkey, Joe Todd, and Fosdick Goodrich of the Indianapolis Engraving company for their development of the art theme, their efforts to hurry our late material through, and their aid in cutting our expenses to a minimum.

Voohris studio for the production of what we feel to be a very high grade of photography; also their patience in handling rush orders.

Mr. James Daly of the Commercial Service company for his helpful suggestions and efforts to get the Oracle out in time.

Personally, *the editor* wishes to express his appreciation to the following:

Lowell Good, as business and advertising manager, for his successful sale of advertising and help in all departments.

Margaret Berdel for her willingness to cooperate at all times as art and snapshot editor.

Margaret Brocksmith for her literary work and the mounting of photos.

Ernest LeRoy for his contribution as sports editor.

Robert Durham for his jokes and for typing.

Jean Lewis for prompt service as music editor.

Albert Findley for his work as circulation manager.

Delmar Moore and Julia Ann Sprague for typing. Although not members of the staff, they were willing to help at all times.

My roommates for bearing with my occasional touches of ill humor!!

We began late. It is late now, very late. Somewhere a clock is striking the wee hours that follow midnight. It is a familiar sound. I have heard it quite regularly of late.

But now the task is finished and I heave a sigh of relief. Relief? Yes, but you may also detect a prominent strain of regret. It has been great, but—

Think I shall take off my shoes and get some sleep.

Good night,

"Bud"



157
AUG 23 '56

INDIANA UNIVERSITY COLLEGE
LIBRARY

