

1939

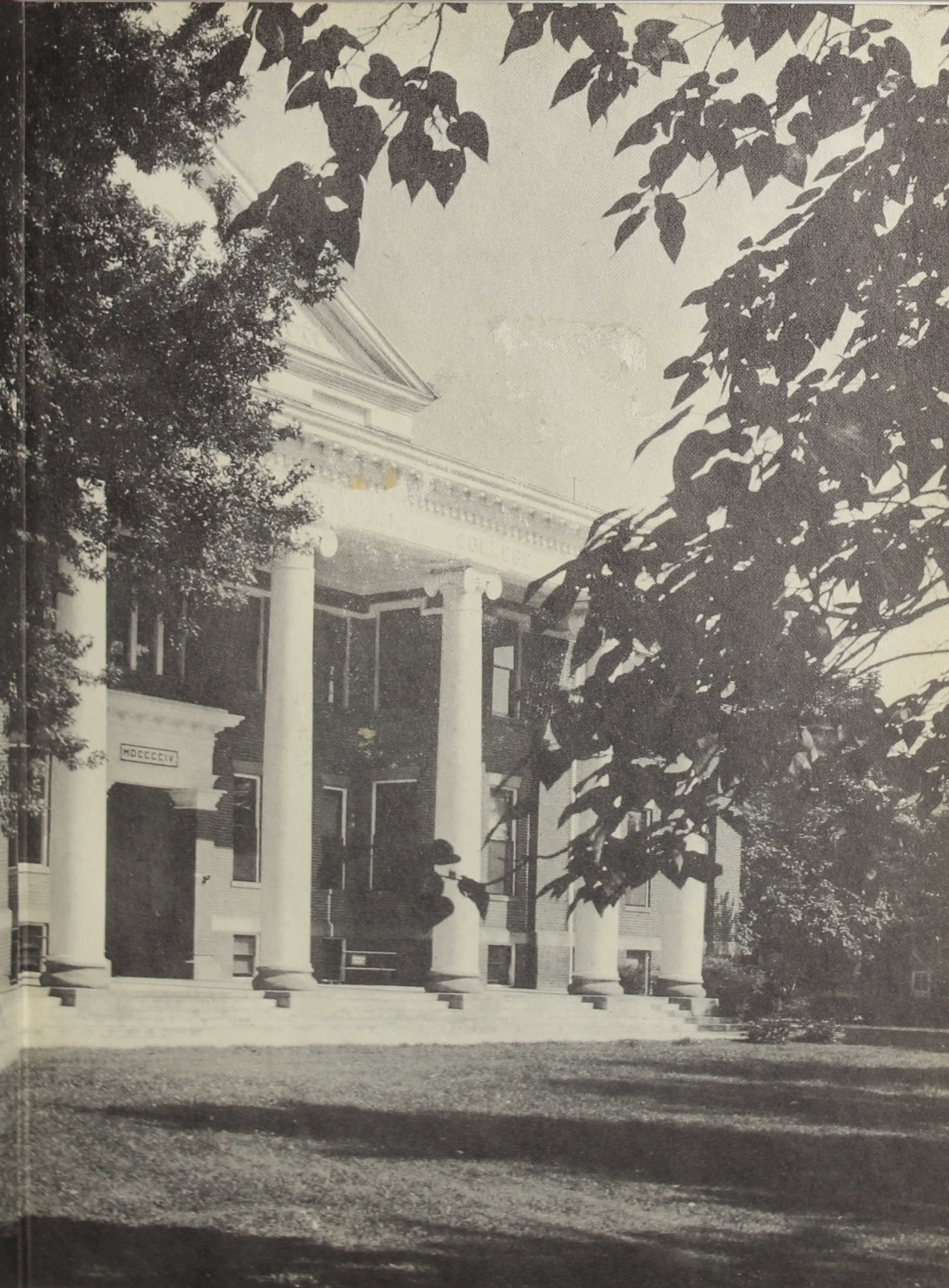
THE ORACLE





I.C.U.  
ARCHIVES  
DVP





# *The* ORACLE

1939





1939

ORACLE


*Published by*

JUNIOR CLASS

OF

INDIANA CENTRAL

COLLEGE



MARSHALL CHAMBERS

*Editor*

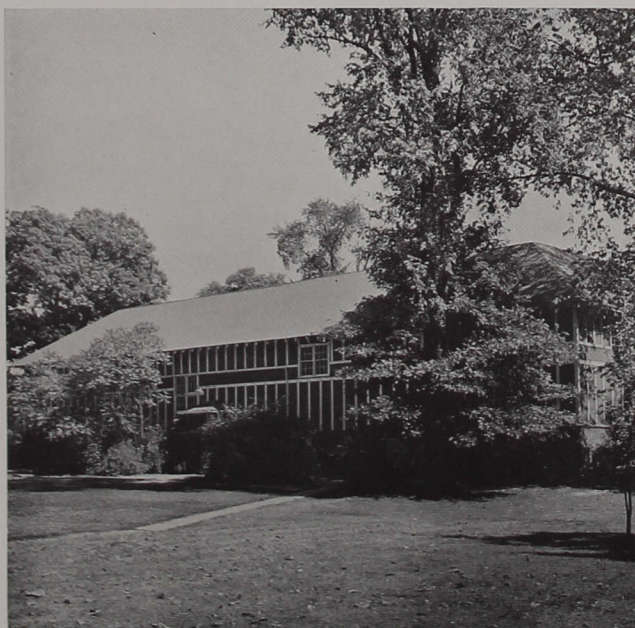
MARK BRADFORD

*Bus. Mgr.*



# *Foreword...*

In future years when you are comfortably established in your own homes, it is the hope of the staff that you will draw your family together around the fireplace and while scanning the pages over you will re-live the many pleasant memories which you shared as illustrated in this Oracle.







## *C h a p t e r s . .*

Administration

C l a s s e s

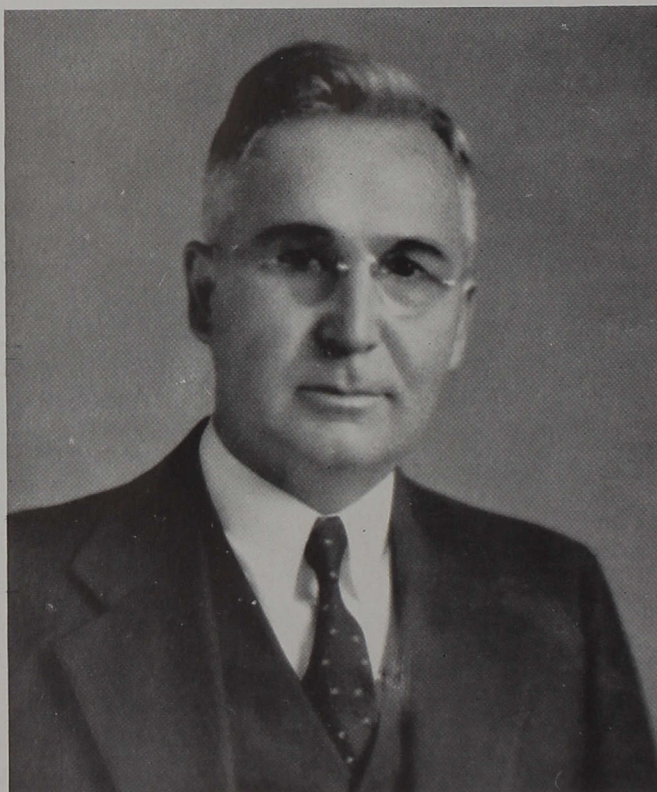
A t h l e t i c s

Organizations

Campus Life



*Administration . . .*



PRESIDENT I. J. GOOD, A. B., A. M., LL. D.

We, the Junior class, wish to dedicate this page to President Good, who for the past twenty-five years has so faithfully and untiringly helped to make this college such an admirable institution.



## Faculty...

J. A. CUMMINS, Ph. D.  
*Philosophy, Psychology.*



W. P. MORGAN, Ph. D.  
*Biology, Physiology.*

SIBYL WEAVER, A. M.  
*English, Literature.*



J. J. HARAMY, Ph. D.  
*Social Science, Government, History.*

D. H. GILLIATT, Ph. D.  
*Bible, Religion.*



LEORA WEIMAR, A. M.  
*Speech, Journalism.*

VIRGINIA CRAVENS, A. M.  
*Literature, Dean of Women.*



W. EARL STONEBURNER, A. M.  
*Education, Dean of Men.*

## Faculty...



HARRY C. GOOD, A. M.  
*Physical Education, Athletics.*



ANNA DALE KEK, A. M.  
*Latin, Registrar.*



ETHEL GILLIATT, B. Mus.  
*Voice, Choir.*



EVAN R. KEK, A. B.  
*Treasurer.*



IRENE M. PRICE, B. P. E., B. A.  
*Physical Education.*



LOIS TAYLOR, A. M.  
*English, Education.*



ESTHER BECKER,  
*Voice.*



WILHELMINA M. FEEMSTER,  
A. M.  
*History, Geography.*



## Faculty...

R. V. DAVIS, A. M.  
*Education.*



P. M. STRICKLER, Ph. D.  
*Mathematics, Physics.*

BERYL HOYT, A. B., B.L.S.  
*Librarian.*



S. A. DURBAN, Ph. D.  
*Chemistry, Geology.*

MARTHA STORM, A. B.  
*Art.*



P. O. TURNER, A. M.  
*Business, Economics.*

MARY HUEY, B. S.  
*Home Economics.*



HELEN HAMM, B. Mus.  
*Piano, Music Theory.*

## Faculty...



E. W. EMERY, A. M., D. D.  
*Field Secretary.*



R. H. TURLEY, B. D., D. D.  
*College Pastor.*



ELMER SMITH, A. B., B. D.  
*Field Secretary.*



ELSIE MACGREGOR  
*Organ.*



MAURICE SHADLEY, A. B., B. Mus.  
*Band, Instrumental Instruction.*



ANNA HAWK  
*Matron of Dailey Hall.*



HELEN STRICKLER, A. B.  
*French.*



MARIE TURNER, A. B.  
*Business Laboratory Assistant.*



D. F. CARMONY, A. B., A. M.  
*History, Social Science.*



# *Classes...*





LOWELL BRUCE WRIGHT

A. B.

Majors: *Latin, English.*

Intramural Sports 2, 3, 4; Speech Arts Honor Society 2, 3, 4; Zetaganthea 4; Y.M.C.A. Cabinet 3, 4; Orchestra 1; Student Volunteers 1; Editor of Oracle 3; Class President 4; Latin Club 4; Dormitory President 4.



STEPHEN GUBI

A. B.

Majors: *Religion, Philosophy.*

Student Pastor 2, 3, 4; Evangelical Theological Seminary.



ESTHER RUTH SMITH

B. S. in Education.

Major: *Education.*

Glee Club 4; Class Secretary 4.



BENNIE THOMAS MORGAN

A. B.

Majors: *History, English.*

Intramural sports 1, 2; Student Volunteers 2; Student Pastor 1, 2, 3, 4; Asbury College 1, 2.



DWIGHT HAROLD BARKER

B. S. in Education.

Major: *Elementary Education.*

Intramural sports 1, 2, 3, 4; Philomusea 1, 2, 3; President 4; Glee Club 1, 2.



HAROLD LEO GODWIN

A. B.

Majors: *Physical Education, History.*  
Intramural Sports 1, 2, 3, 4; Basketball 1, 2, 3, 4; "C"  
Association 3, 4.



FRANCES BERNICE SNODDY

A. B.

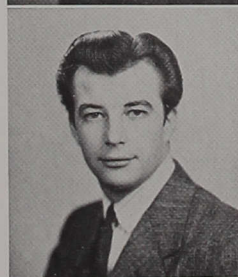
Majors: *Mathematics, Physical Education.*  
Dramatics 2, 3, 4, President 4; Oracle Staff 3; Booster Club 3; Class Vice-President 3, 4; Revel of the Roses, Queen 3, 4; Theacallosia 4.



NELSON DARRYL FAITH

A. B.

Majors: *History, English.*  
Intramural Sports 1, 2, 3; Dramatics 2, 3, 4; Reflector Staff 4; Alpha Psi Omega 4, Treasurer 4.



FRANCES ELIZABETH BRAZEAL

A. B.

Majors: *Mathematics, Physical Education.*  
Booster Club 2, 3, 4; Class Vice-President 2.



WILLIAM DAYTON SHARPE

A. B.

Majors: *Physical Education, History.*  
Baseball 1; Basketball 3, 4; "C" Association 3, 4.





PAUL KENNETH SMITH

A. B.

Major: *Physics*.

Intramural Sports 1, 2, 3, 4; Dramatics 1, 2, 3, 4;  
Philomusea 2, 3, President 4; Track 3, 4; Cross  
Country 3.



WILLIAM HAROLD ZIMMERMAN

B. S.

Majors: *Chemistry, Biology*.

Intramural Sports 3; Student Volunteers 1, 2, 3, 4;  
Reflector Staff 2, 3; C. E. President 4.



MARY ELLEN ANDREW

A. B.

Majors: *History, English*.

Theacallosia 3, 4; Student Volunteers 1, 2, 3, 4; Re-  
flector Staff 3.



PAUL EMERSON DUCKER

A. B.

Major: *Chemistry*.

Philomusea 1, 2, 3, President 4; Student Volunteers  
1, 2, 3, 4; Reflector Staff 1, 2, 4; Student Pastor 3.



MARVIN LENARD HENRICKS

A. B.

Major: *Philosophy*.

Intramural Sports 1, 2, 3, 4; Dramatics 4; Zetagathea  
2, 3, President 4; Y.M.C.A. Cabinet 2; Glee Club 1, 2,  
3; C. E. Cabinet 2; Quartet 3, 4; Student Volunteer  
Cabinet 2; Booster Club 2, 3, 4; Class President 2;  
Yell Leader 1, 2, 3, 4.



HENRY EDWARD POTTER

A. B.

Majors: *History, Physical Education.*

Baseball 1, 2, 3, 4; Basketball 3, 4; "C" Association  
1, 2, 3, 4.



GEORGE AUGUSTUS GARRIOTT

A. B.

Majors: *English, History.*

Intramural Sports 1, 2, 3, 4; Dramatics 1, 2, 3, 4;  
Philomusea 1, 2, 3, President 4; Y.M.C.A. Cabinet 1,  
2; Orchestra 1; Glee Club 3.



SHEREEN LANETTE MCGEE

A. B.

Majors: *Home Economics, Latin.*

Latin Club President 4; Theacallosia 4.



CARLETON HARVEY FRANKS

B. S. in Education.

Majors: *Education, Physical Education.*

Intramural Sports 1, 2, 3, 4; Zetagea 3, 4.



ROBERT LEE GILLAN

A. B.

Majors: *Public School Music, English.*

Band 1, 2, 3, 4; Orchestra 1, 2, 3; Glee Club 2, 3;  
Quartet 4; Student Volunteers 1, 2, 3, 4.





RALPH WILLIAM SMITH

A. B.

Majors: *Religion, Philosophy.*

Intramural Sports 1, 2, 3, 4; Dramatics 3, 4; Director Major Production 4; Philomusea 1, 2, 3, President 4; Y.M.C.A. Cabinet 2, 3; Glee Club 1, 2, 3; Choir 1, 2; Student Pastor 3, 4; Quartet 2; Octet 3, 4; Student Volunteers 1, 2; Oracle Staff 3.



CLARA JANE HICKMAN

A. B.

Majors: *English, Public School Music.*

Dramatics 2, 3, 4; Glee Club 1, 2, 3; Reflector Staff 3; Theacallosia 4.



LELAND NEWELL SWENGEL

A. B.

Majors: *Chemistry, Mathematics, History.*

Intramural Sports 1, 2, 3, 4; Zetagea 1, 2, 3, President 4; Reflector Staff 3; Oracle Staff 3; Y.M.C.A. Cabinet 3, President 4.



IDA MAE GOOD

A. B.

Majors: *Applied Music, English.*

Philaethea 1, 2, 3, 4, President 3; Y.W.C.A. Cabinet 3, 4; Orchestra 1, 2; Glee Club 1, 2, 3, 4, President 1; Choir 1, 2, President 1; String Quartet 1; Recital 2; Church Choir 1, 2, 3; Quartet 3, 4; Octet 3, 4; Student Volunteers 3.



JOSEPH EDWARD BOHR

A. B.

Majors: *History, Physical Education.*

Intramural Sports 3; Baseball 3; Basketball 1, 2, 3, 4; Class Vice-President 1; "C" Association President.

## The Oracle . . . 1939

---



OTIS MELROY BAKER

A. B.

Majors: *Religion, Philosophy.*

Intramural Sports 1, 2, 3, 4; Philomusea 1, 2, 3, President 4; Glee Club 1, 2.



ELSIE MILDRED BECK

A. B.

Majors: *History, English.*

Speech Arts Honor Society 2, 3, 4; Chairman 2, 3, 4; Theacallosia 1, 2, 3, 4, President 3; Y.W.C.A. Cabinet 2, 3, 4, President 4; Student Volunteers 1, 2, 3, Vice-President 3; Booster Club 1.



ORA LOUIS CLAYTON

A. B.

Major: *Physical Education.*

Intramural Sports 1, 2, 3, 4; Baseball 2, 3, 4; "C" Association Vice-President.



ETHEL EILEEN LAMB

A. B.

Majors: *History, Physical Education.*

Intramural Sports 2, 3, 4; Theacallosia 2, 3, 4, President 3; Dormitory President 4; Western Illinois State Teacher's College 1; Revel of the Roses 2.



OREN RAYMOND RUFF

A. B.

Major: *History.*

Intramural Sports 2, 3, 4; Class Treasurer 2; Class President 3; College Bookkeeper 2, 3, 4.





HERMAN ORVAL MOORE

A. B.

Majors: *Religion, Philosophy.*

Intramural Sports 1, 2, 3, 4; Dramatics 3, 4; Student Pastor 3, 4; Philomusea 4.



FLORENCE OLETA DUCKER

A. B.

Major: *Religion.*

Dramatics 3, 4; Philalethea 2, 3, 4; Student Volunteers 1, 2, 3, 4; Student Pastor 3.



ARTHUR THOMAS MOFFATT

A. B.

Majors: *Religion, Philosophy.*

Intramural Sports 2, 3, 4; Dramatics 3; Philomusea 2, 3, 4; Y.M.C.A. Cabinet 3; Glee Club 4; Student Volunteers 2, 3, 4; Reflector Staff 3; Student Pastor 3, 4.



ANITA ERMA POWELL

A. B.

Majors: *Home Economics, English.*

Philalethea 2, 3, 4; Student Volunteers 3; Reflector Staff 3; Platteville State Teacher's College 1.



WILFRED ELZA LOOMIS

A. B.

Major: *Philosophy.*

Intramural Sports 1, 2, 3, 4; Track 1; Student Volunteers 1, 2, 3, 4; Student Pastor 2, 3, 4.

## FRANKLIN FREDERICK BORG

A. B.

Major: *Physics*.

Intramural Sports 1, 2, 3, 4; Zetagea 2, 3, 4; Booster Club 2.



## NINA ALBERTA SHAKER

B. S. in Education.

Major: *Education*.

Philaethea 1, 2, 3, President 4; Y.W.C.A. Cabinet 4; Glee Club 1; Student Volunteers 1, 2; Revel of the Roses 2; Dormitory President 4.



## JOHN MEREDITH KIRKPATRICK

A. B.

Majors: *Religion, History, English*.

Intramural Sports 1, 2, 3, 4; Y.M.C.A. Cabinet 4; Reflector Staff 3; Oracle Staff 3; Dormitory Council 1; Student Pastor 2, 3, 4.



## ARABELLE A. ENYART

B. S.

Major: *Education*.

Student Volunteers 1, 2, 3, 4; Cabinet 3, 4; Reflector Staff 3.



## LOREN E. LONGENBAUGH

A. B.

Majors: *History, Physical Education*.

Intramural Sports 1, 2, 3, 4; Dormitory Council 1.



HAROLD WILBUR EVERITT

A. B.

Major: *History*.

Intramural Sports 1, 2, 3, 4; Philomusea 2, 3, President 4; C. E. Cabinet 4, President 4; Dormitory President 4; Track 2, 4; Student Volunteers 1, 4; Booster Club 3, President 4.



HELEN SOLOMON

A. B.

Major: *Home Economics*.

Speech Arts Honor Society 3, 4; Philaethea 3, 4; Student Volunteers 1, 2, 3, 4; C. E. Cabinet 4.



MITCHELL GEORGE OSMAN

B. S.

Major: *Chemistry*.

Zetagathea 1, 2, 3, 4; American Chemical Association 1, 2, 3, 4.



HELEN TODD HUEHLS

B. S. in Education.

Majors: *Elementary Education, English*.

Debating 2; Speech Arts Honor Society 2, 3, 4; Y.W.C.A. Cabinet 3; Reflector Staff 2, 3; Oracle Staff 3; Earlham College 1; Philaethea 2, 3, 4.



OWEN BERT KEENE

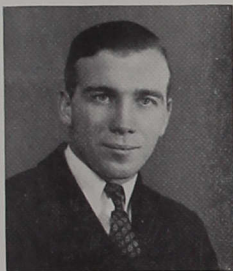
A. B.

Majors: *History, Physical Education*.

Intramural Sports 1, 2, 3, 4; Baseball 1, 2, 3, 4; Track 4; "C" Association 1, 2, 3, 4.







MARION WALLACE COPLEN

A. B.

Major: *History.*

Dramatics 1, 2, 3; Philomusea 2, 3; Glee Club 1, 2, 3;  
 Quartet 2, 3; Octet 2, 3; Student Volunteers 2, 3;  
 Reflector Staff 2, 3.

## Class Officers:

President.....BRUCE WRIGHT

Secretary.....ESTHER SMITH

Vice-President.....FRANCES SNODDY

## NOT PICTURED

ESTA McDONALD

B. S. in Education.  
 Intramural Sports 1, 2.

GEORGE C. RILEY

B. S. in Education.  
 Majors: *Education,*  
*Physical Education.*

WILLIAM ORME

B. S. in Education.  
 Major: *Education.*

MYRON J. LOWE

A. B. Degree  
 Majors: *History, Eng-*  
*lish.*

Intramural Sports 1, 2,  
 3; Philomusea 1, 2, 3,  
 President 4; Glee Club 1,  
 2, 3; Baseball Manager  
 1, 2, 3, 4; Octet 3; Stu-  
 dent Volunteers 1, 2.



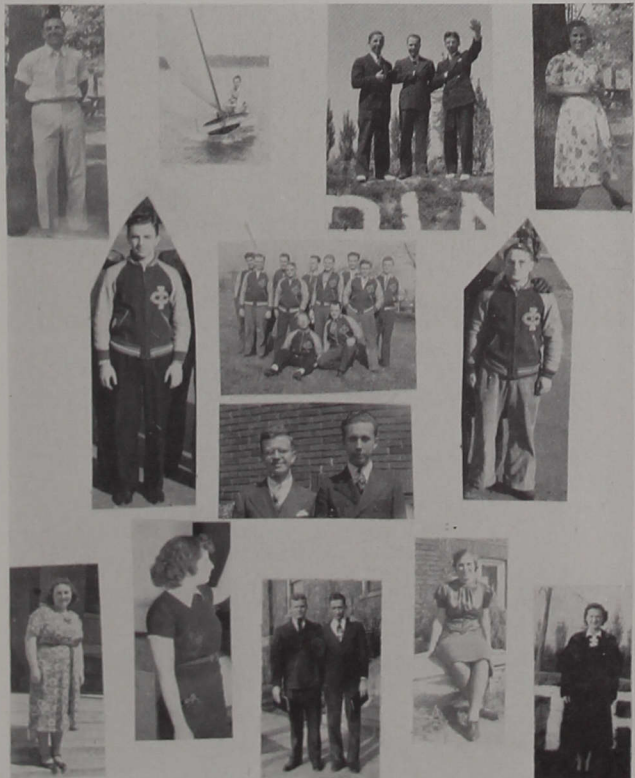


*Class of  
1940*

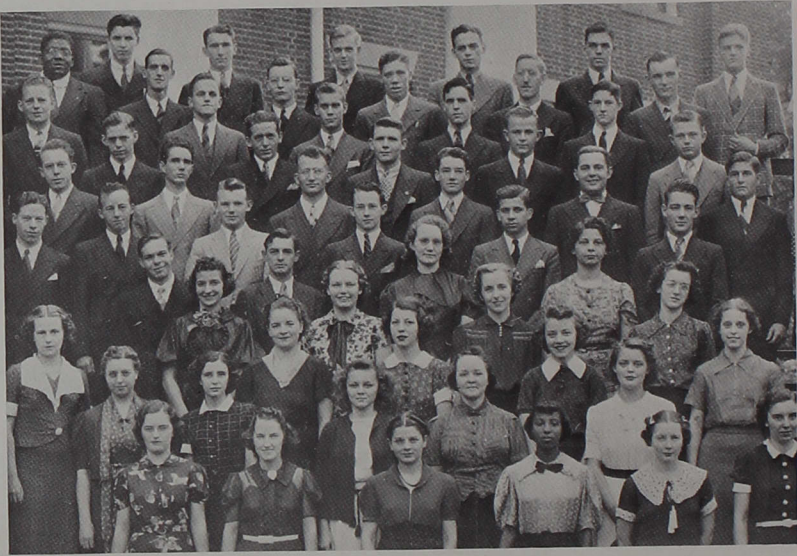
*Row One:* Merlin Dipert, Geraldine Gilliatt, Phoebe Wilson.  
*Row Two:* Helen Callison, Elva Thurston, Ruth Quakenbush.  
*Row Three:* Marjorie Hunt, Martha Shepherd, Anna Mary Glick.  
*Row Four:* Ralph Hudson, Deloris Stickney, Lester Kirk.  
*Row Five:* Omar Breedlove, Daniel Rothenberger.  
*Row Six:* Eleanor Phillips, David Livengood, George Hinshaw.  
*Row Seven:* Charlotte Wallace, Roma Slabaugh, Bonnie Meers, Harold Gantz.  
*Row Eight:* Lloyd Hiatt, Mark Braford, Clara Powell.  
*Row Nine:* Robert Wagner, Thomas McCubbins, Arthur Weddell, James Horner.  
*Row Ten:* William Spray, Millard McCubbins, George Riley.  
*Row Eleven:* Dwight Smith, Lavern Beitler, Robert Rice, Marshall Chambers.

## Class Officers:

*President*.....DANIEL ROTHENBERGER  
*Secretary*.....DAVID LIVENGOOD  
*Vice-President*.....JAMES HORNER







## *Class of 1941*

- Row One:* Helen Gonser, Rose Lynch, Ruth Thomson, Doris Brown, Harriet Hancock, Mabel Mitchell.
- Row Two:* Frances Brown, Lois Lee Moyer, Aileene Brazeal, Ruth Howard, Juanita Smith.
- Row Three:* Elizabeth Maass, Henrietta Rider, Clarena Schlegel, Ruth Chambers, Maxine Black.
- Row Four:* Fern Hague, Kathryn Nicodemus, Margaret Montgomery, Marjorie Eaton.
- Row Five:* Howard Simmerman, Merrill Underwood, Wavelene Babbitt, Frances Radez.
- Row Six:* Ralph Swisher, Emerson Barker, Chester Klingerman, Marion Truesdale, Derrill Ratliff, Alva Stoneburner.
- Row Seven:* Chester Davis, Maurice Hartsock, Martin Mumaw, Eugene Garriott, DeLoss Donham, William Harritt.
- Row Eight:* Thomas Keefe, Kenneth Brooks, Richard Griffith, Norris Trowbridge, Mervin Holzhausen.
- Row Nine:* Harvey Showalter, Walter Brenneman, Hershel Eaton, Donald Emery, Leon Willhite.
- Row Ten:* Scott Eberhardt, Orville Salzman, Wilbur Kenoyer, Tracy Turner, Fred Edge, George Hommel.
- Row Eleven:* Lowell Bedwell, Carl Adams, Ralph Frey, Donald Thomas, Cloyd Rose, Joel Wilson.

## Class Officers:

President.....RALPH FREY  
Secretary.....WALTER BRENNEMAN  
Vice-President.....AILEENE BRAZEAL





## *Normal Class of 1938*

*First Row:* Dorothy Milhouse, Myra Annear, Frances Whiteman, Ethel Pfeiffer, Ellen Mitchell, Margaret Herd, Phoebe Wilson.

*Second Row:* Hazel Mullins, Dorothy Turner, Ruth McDonald, Eulala Graham, Elsie Weekly, Wilma Smith, Esther McKain, Anita Mitchell.

*Third Row:* Pauline Waitt, Lolamae Anderson, Neva Funk, Decemma Martinie, Mary Margaret Shatto, Roma Belle Slabaugh, Elizabeth Smith, Ershel Miller, Virginia Gates.





## Class Officers:

President.....WILMA SMITH  
Secretary.....LAVERNE HARROD  
Vice-President.....ERSHEL MILLER





## Class of 1942

*First Row:* Annette Jackson, Aldean Painter, Wilma Welling, Violet Throm, Virginia Pettes, Irene Zeider, Doris Potts.

*Second Row:* Mary Dunville, Maribelle Johnson, Beatrice Sullivan, Lillian Hart, Sarah Montgomery, Maryellen McKenzie, Treva Shoemaker.

*Third Row:* LaDonna Willman, Martha Lois Addison, Geneva Wilkins, Eva Daugherty, Cherry Brown, Viola Hose, Ruth Nicodemus.

*Fourth Row:* Carrol Eichhorst, Paul Tryon, Verdun LaChance, Betty Haberman, Dorothy Bonne, Daisy Perry, Annabel Robb.

*Fifth Row:* Lucille Nice, Vera Freed, Fausttanna Brinson, Charles Apple, Dorothy Swindell, Ann Morgan, Pauline Wolfe.

*Sixth Row:* Maxine Davis, Charles Bowers, Floyd McShirley, William Wittenauer, Ray Lightbody, Leland Stickler, Clyde Holzhausen.

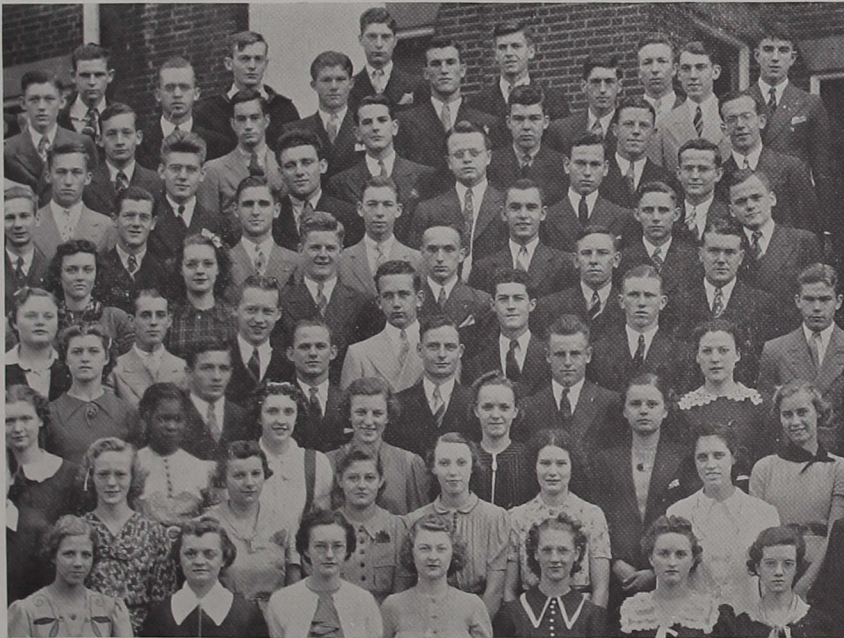
*Seventh Row:* Victor Gross, Harold Beason, Gordon Core, John Birden, Rebecca Peter.

*Eighth Row:* Ralph Davis, Orville Cole, Paul Nierstheimer, Angus Nicoson, Ival Witsman, James Sipe, Lester Gillan.

*Ninth Row:* Lucian Bare, Herschel Grose, John Norwalk, Clifton Adams, Dale Cook, Gale Miller, Milton Kellum.

*Tenth Row:* James Piepenbrok, James McDonald, Julius Adams, Raymond Bloomingdale, Oris Pinkstaff, Philip Stone, Benjamin Shaw.

*Eleventh Row:* Jack Moore, Elwyn Hoot, Robert Ashe, Luther Spangler, Donald Gorbett, Robert Arford, Harold Conkle.



## *Class of 1942*

*First Row:* Ruby Everitt, Evelyn Greek, Mary Sprenger, Frances Kritsch, Imo Gene Snyder, Roma Wilson, Birdie Oldaker.

*Second Row:* Vernice Seymour, Virginia Rose, Betty Jo Bennett, Gene Harvey, Hope Bean, Carol Ramsey.

*Third Row:* Marjorie Hill, Pearl Johnson, Florence Kerkhoff, Marian Boatman, Edna Meyers, Dorothy Petty, Juanita Fenton.

*Fourth Row:* Mary Sidebottom, Arthur Heller, John Schnitzius, William Brett, Kenneth Sidebottom, Alice Smith.

*Fifth Row:* Jane Durham, Charles Peak, Forrest Eherenman, Frank Leslie, Arbon Orahood, Frederick Wilt, William Fredenberger.

*Sixth Row:* Wilma Tilley, Jane Ringo, Robert Painter, George Jacobs, Robert Johnson, Kenneth Stuckey.

*Seventh Row:* Adolph Walker, Myron Lewis, Dwight McCrocklin, Steward Davis, Lowell Rice, Dale Hamner, Marshall Piercefield.

*Eighth Row:* George Smith, Robert Rooker, Charles Long, Paul Haynes, Austin Pellett, John Andrews.

*Ninth Row:* James Miller, Ray Van Deusen, John Knecht, Blake Turner, Virgil Hillard, Ernest Schenk.

*Tenth Row:* Harold Criswell, Sherman Cravens, John Fredenberger, Lee Perry, John Schmidt, Robert Jordan.

*Eleventh Row:* John Snyder, William Bushee, Leland Carnes, Allen Grinyer, Raymond Green, Wendell Baker.

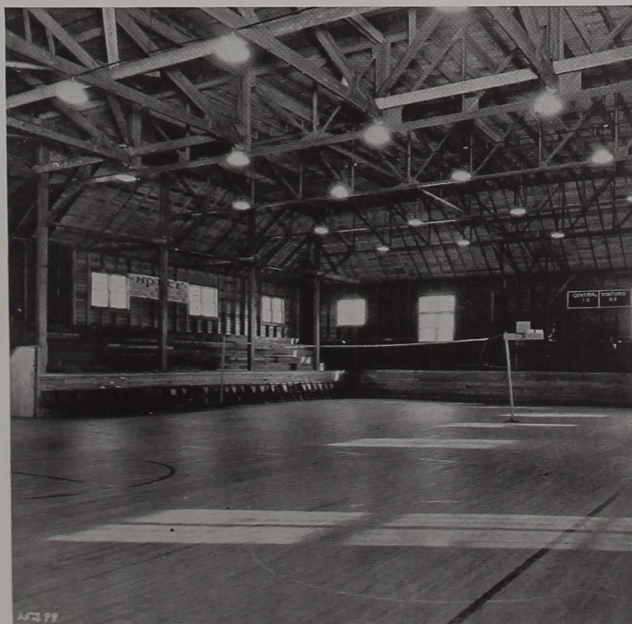


## Class Officers:

*President*.....SHERMAN CRAVENS  
*Secretary*.....RUBY EVERITT  
*Treasurer*.....VERNICE SEYMOUR  
*Vice-President*.....ROBERT PAINTER



# *Athletics...*

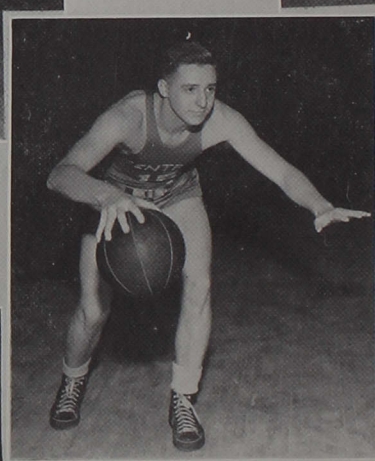




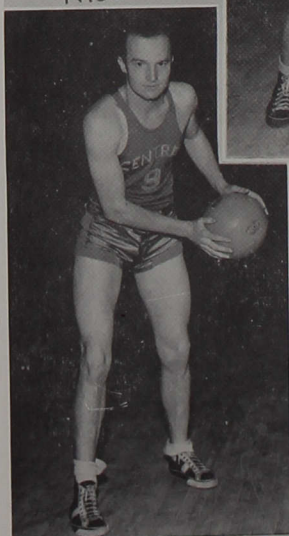
Bohr



Godwin



Potter



Rice



Sharpe



## HAROLD GODWIN

"Jake" won his basket-ball letter in his Junior year and has proved to be a valuable player many times. Although this is Jake's last year to wear the Cardinal and Gray, he will long be remembered for his ability and sportsmanship. We wish you well, Jake.

## JOE BOHR

Joe has been a steady, dependable player for the three years that he has been a letter man. Not only was Joe a good defensive man, but also had the ability to "hit the hoop" and roll up the points for the Cardinal and Gray. Joe has been just as popular off the hard-wood floor as he has been while playing. Good luck to you, Joe.

## HENRY POTTER

Better known as "Hank". Hank is the fulfillment of the old prophecy, "Little, but mighty". Wherever there is action on the floor, Hank generally is in the midst of it. His speedy dribbling and snappy passing have accounted for many points for Central. Hank has played for the past two years as a letter man and now goes the way of all seniors. We're pulling for you, Hank.

## WILLIAM SHARPE

Tony won his letter last year and has really showed his colors ever since. It seems that Tony might well be given the title of "Dead-eye Dick", for he always seemed to know just where the hoop was, and rang the bell a good many times for Central. Tony was fast and a good dribbler, always in the thick of the fight. He also leaves us, and with his leaving we are wishing for him success.

## ARTHUR WEDDELL

"Mose" is a steady, dependable guard. Not many of them get around him. His size counts in taking the ball on rebounds. He has one more year with us and we're counting on much from him.

## RAY BLOOMINGDALE

Ray comes to us from the good old northern part of Indiana, and has really upheld the ability of northerners to play on the hard wood. Ray soon hit his stride and with his size and ability to take the ball off the board has won a place on the varsity squad. He came through with many points just when they were most needed. We're expecting much from you next year, Ray.

## LEE PERRY

Another of our promising Freshmen is Lee. As a reserve player, he has been a very capable man to fall back upon. His height and aggressiveness make him a dangerous man for the opposition. We know that he'll be in there batting away for the Cardinal and Gray next year.

## WALTER BRENNEMAN

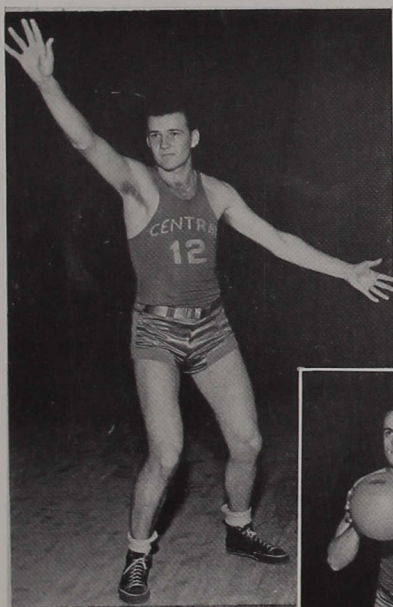
Walt is a Sophomore reserve man who can hold his own whenever called upon. His size and power of drive under the basket reminds us that he has two more years to play for Central. Walt is equally as well liked off the floor for we find him a jolly good fellow. More power to you next year, Walt.

## ANGUS NICOSON

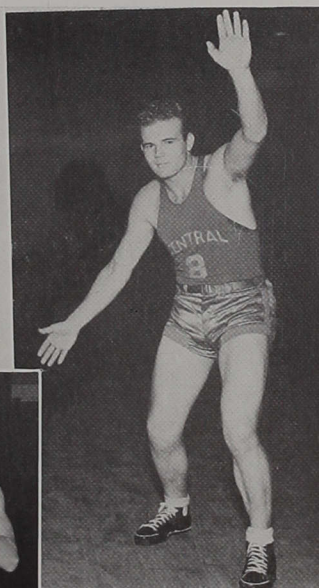
Another of our Freshmen, who has proved his ability as a basket-ball player, is Nic. He is a dependable player as well as a good dribbler and a speedy driver. His keen eye has located the basket more than once, and his quickness to snatch the ball from the opponent has brought cheers from the fans many times. We want to see you "on the ball" next year.

## ROBERT RICE

Bob is a steady, dependable reserve man who can be counted on to do his part whenever called upon. His drive and ability to rebound the ball have won the respect of many fans. He goes the way of all Seniors and we're pulling for you, Bob.



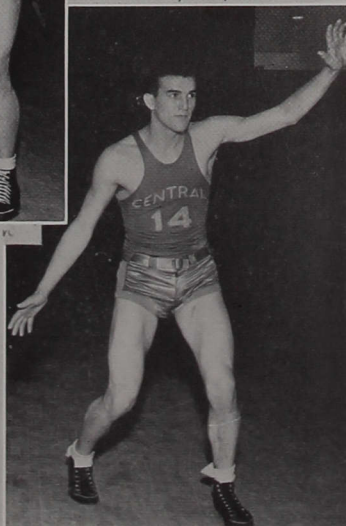
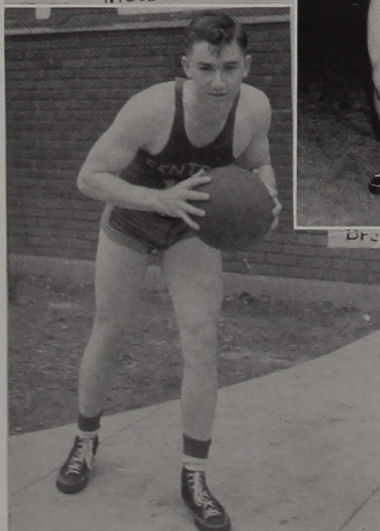
Bloomingdale  
Nicolson



Weddell  
Perry



Drenneman







*First Row:* Turner, Frey, Perry, Hillard, Bloomingdale, Nicoson, Eaton.  
*Second Row:* Weddell, Potter, Godwin, Bohr, Sharpe, Rice, Brenneman.  
*Third Row:* Stickler, Spangler, Baker, Carnes, Moore, J. Fredenberger, G. Smith, Johnson,  
Coach Good.

## Basketball Squad

### GAME RESULTS

NOV. 11th

The 1938-39 edition of Indiana Central basket-ball was introduced on the Taylor University court as Coach Harry Good used fourteen men in the contest to win by a decisive margin of 59 to 25.

NOV. 19th

Using twenty players, Good's Greyhounds won their second basket-ball game of the season by downing Huntington College 38-20.

DEC. 2nd

Led by Brenneman, who scored five field goals, the Central cagers displayed a fast attack to again defeat Huntington, 48 to 26 at the Heights gym for their third straight victory.

DEC. 10th

Indiana Central's Greyhounds met their first defeat at the hands of the Ball State Cardinals at the Ball State Gymnasium 45 to 37.

DEC. 14th

The Franklin Grizzlies outscored the Cardinals 44 to 34 in a rough encounter at Franklin. Bohr's accurate sniping led Central's attack with four field goals and three free throws.

DEC. 15th

The Greyhounds at no time relinquished the lead as they handed the Hanover Panthers a 39 to 34 setback at Hanover, with Potter accumulating fifteen points.

JAN. 7th

The "Good men" returned from the vacation to turn back Taylor by a score of 47 to 26 at the local gym. Nicoson paced the Greyhounds' attack with six field goals and a charity toss.

JAN. 14th

Hanover got their revenge by defeating the Greyhounds in a ragged but hard fought game at the Heights by a score of 43 to 36. The reserves defeated the Kokomo Junior College on Jan. 16th in the local gym 55 to 17.

JAN. 21st

Manchester again visited us on our annual Homecoming day, but this time the tables were turned and the Greyhounds defeated the Spartans in a hard fought, rough and tumble game in the overtime period with a score of 54-50.

FEB. 1st

Two field goals in the last 30 seconds of play gave Central a 43 to 39 victory over Valparaiso's defending champions in a very close battle. Bohr led the scoring with eleven points.

FEB. 3rd

The Indiana Central quintet turned back the Indiana State Sycamores by a score of 37 to 22 in a fast game at the University Heights gymnasium. Sharpe scored seven field goals.

FEB. 8th

The Central snipers roared to a decisive victory over Franklin in a home game, 60 to 36, in which twenty Central men saw action. The half-time score was 35 to 9.

FEB. 11th

In the game at the Butler Fieldhouse, the Bulldogs gained an early lead which they did not relinquish although it was threatened on numerous occasions. A final rally by the Greyhounds was warded off by stalling, and Butler won 37 to 33.

FEB. 14th

Indiana Central grabbed an early lead and remained well out in front during the entire contest to gain a 39 to 29 triumph over Indiana State at Terre Haute.

(Continued on Page 40)



Row One: J. Wagner, Shepard, Salzman, Hose, M. Holzhausen, Wills, Crowe.

Row Two: Sharpe, Weddell, Keene, Dorton, Clayton, Potter, Bohr.

Row Three: R. Wagner, Trowbridge, Rice, Morgan, Brenneman, Wilson, Griffith, Coach Good.

## Baseball

April 19—Central.... 6	N. C. A. G. U.... 1	May 5—Central.... 7	Bonebrake ..... 6
April 21—Central.... 8	N. C. A. G. U.... 5	May 7—Central.... 2	Earlham ..... 7
April 22—Central.... 5	Butler ..... 6	May 10—Central....19	Franklin ..... 7
April 23—Central....15	N. C. A. G. U.... 1	May 11—Central.... 5	Hanover ..... 2
April 25—Central.... 8	Taylor ..... 9	May 13—Central.... 3	Franklin ..... 1
April 26—Central.... 4	Ball State..... 8	May 19—Central.... 7	Ball State..... 4
April 29—Central.... 8	Hanover ..... 2	May 20—Central.... 2	Earlham (14 Inn) 2
April 30—Central.... 5	N. C. A. G. U.... 6	May 24—Central.... 4	Butler ..... 3
May 2—Central....14	Taylor ..... 6	May 26—Central— 0	Butler ..... 1
May 3—Central.... 3	Butler .....14		





*First Row:* Brett, Apple, Rothenberger, R. Smith, captain.  
*Second Row:* Garriott, Hiatt, J. Miller, Wilt, Hinshaw.

## Cross Country

Although this organization is only two years old on our campus, this second year has proved to be a very successful one.

When the call for runners was given, in addition to the several veterans of last year's team, there were several very promising freshmen who responded.

R. Smith, captain and coach of this year's team could always be counted on to come through for Central. Perhaps most promising of the freshmen was Fred Wilt of whom we will expect much in track this spring.

Perhaps the one thing that contributed most to the "cross-country" spirit on our campus this year was the fact that we had a course laid out on our campus where we held two meets, including the Little State.

## Results of Cross Country

The first cross country meet of the year was a three-way meet with DePauw and Butler at Butler. Central won second place by one point as well as being beaten by that same margin. The scores were Butler 37, Central 38, and DePauw 39.

Although Central took the first two places in a meet with Ball State, October 26 on the new course laid out on the Indiana Central Campus, Ball State managed to squeeze out a 27 to 28 victory. Wilt and R. Smith finished first and second.

On October 29, the Central harriers journeyed to Earlham where they won easily, 15 to 40. Central runners won the first five places in this meet.

Next to fall before Central were the Little Giants of Wabash on their own course. The score again was 15 to 40, Central winning the first five places.

In the Big State meet held at Butler, November 12, Central, in competition with seven other colleges and universities finished third. With R. Smith finishing ninth and Wilt eleventh, Central managed to nose out Butler 106 to 107. Indiana finished first with 23 points and Purdue was second with 63.

On November 19th, as host to the other colleges of the state in the Little State meet, Central carried off the honors by taking first place with 33 points. Ball State was second with 40, and Butler was third with 58 points. Southworth of Butler finished first, closely followed by Wilt of Central, with R. Smith taking third place.

## Basketball Results

(Continued from Page 37)

FEB. 17th

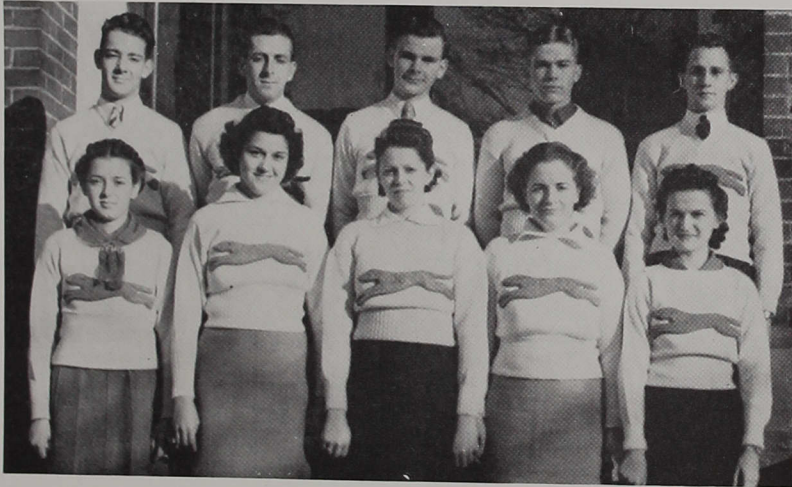
Manchester turned back the Greyhounds at the North Manchester gym in a free scoring game by a score of 64 to 61. Joe Bohr lead the scoring with twenty-two points to his credit.

FEB. 23rd

Next in line to fall under the mighty Greyhounds was Kokomo College. The second team lead Central to an easy victory with a score of 42-32.

MARCH 1st

In the last game of the season the Greyhounds again came through with a victory over Ball State. The game was rough and tumble, but neither team seemed to be playing real ball until the second half. The score at no time was one-sided, but after a hard fought game Central finished at the top of the list by a margin of 45-39. Farewell to the Senior players and may their teams be equally as successful as our team in the Cardinal and Gray.



*First Row:* S. Montgomery, Slabaugh, F. Brazeal, H. Rider, Gilliatt.  
*Second Row:* Stoneburner, Everitt (President), Hiatt, Fredenberger, Truesdale.

## Booster Club

Each college class chooses two members, a boy and a girl, to represent them in the Booster Organization. The Cheer Leaders are automatically members by virtue of their position. Other college groups have the privilege of choosing representatives to the organization. The various representatives meet and organize; choosing a President from their own number who directs the activities of the group. Dr. Morgan, chairman of the Athletic Committee, ably fills the position of Faculty Advisor.

The main purpose of the Booster Club is to raise funds to provide, not necessities, but desirable additions to athletic equipment and recreational facilities. These funds are raised mainly through the sale of pop, ice cream, and candy, at the ball games and in various dormitories.

In the last two years the Booster Club has purchased thirty pair of roller skates to supplement those furnished by the "Y" organizations. It purchased brilliant new "warm up" jackets for the basketball squad, provided heavy "C" sweaters for all new lettermen, and has purchased almost seventy dollars worth of archery equipment for the girls.



## "C" Association

The "C" Association has done progressive work in aiding proper development and creating wholesome athletics in our college and respective high schools. It was organized in September, Nineteen Hundred and Twenty-Seven; and consists of the college president, the faculty athletic committee, and all students who have earned a varsity letter in any major sport. Those "C" men who have graduated are associate members. Great achievements and rewards have come from the work of every member.

*Top Row:* Keene, Weddell, Godwin, Bohr, G. Smith.  
*Second Row:* Clayton, Potter, Sharpe, Stoneburner, Rothenberger.





Showalter



Ward

	won	Lost
Barker	6	0
Kirk	2	1
Trowbridge	3	2
Wright	3	2
Showalter	3	2
Truesdale	2	3

	won	Lost
Henricks	2	3
Hudson	2	3
Ward	2	3
Everitt	1	3
Spray	1	4
Rothenberg	0	3

## INTRA-MURAL BASKET BALL



Rothenberg



Henricks



Spray



Kirk



Wright



Trowbridge



Hudson



Barker



Truesdale

Captain	—	Won	—	Lost
Smith		7		1
Weddell		7		2
Swengel		2		2
Kirk		4		2



Smith

Captain	—	Won	—	Lost
Bohr		3		4
Sharpe		3		4
Ward		1		6
Rice		1		6



Sharpe

INTRA-MURAL  
SOFT BALL



Kirk



Rice



Ward



Weddell



Swengel



Bohr



# *Organizations . . .*





*First Row:* Campbell, Davis, Nice, Wilkins, Chambers, Callison, Hunt, Herd, Weekly, Milhouse.

*Second Row:* Donaldson, M. Montgomery, Glick, McGee, Phillips, Andrews, Seymour, McKenzie, Mullins, W. Smith, Snoddy.

*Third Row:* Stickney, Beck, Anderson, Lamb, Funk, E. Smith, Slabaugh, Ringo, Haberman, Wallace, Babbitt, Bonnie.

## Theacallosia

" . . . in order to develop ideals of truth and beauty in literature and to perfect in the mechanics of routine and government . . ." This is the part a literary society plays in the life of every college student. The valuable training in these fields along with pleasant friendships formed will always be remembered and always remain beneficial. Instruction, experience, and entertainment are the three things emphasized in the society.

A former Theacallosian, Mrs. Anna Dale Kek, is the sponsor.

## Zetagathea

*"May we always hold in memory a place for you  
Dear old Zetagathea here's to you."*

Zethagathea Literary Society meets every Monday to learn and to appreciate the aesthetic side of life which deals with literary art and speech. At the same time parliamentary law receives its due consideration. Zetagathea encourages a wide variety of literary accomplishments. Whether it be essays, poetry, book-reviews, addresses, or debates, every true Zetagathean strives to bring forth the best that is in him.

May it always be said of every true Zetagathea, "A friend of man was he, and thus, he was a friend of God."

*Top Row:* Criswell, Edge, Miller, Thomas, Rice, T. McCubbins, Brenneman, Eaton, Emery, Showalter, Spray.

*Second Row:* Arford, Wright, Henricks, Griffith, M. McCubbins, Wilson, McCrocklin, M. Holzhausen, Ward, Barker.

*Third Row:* Osman, Borg, Braford, Hiatt, Truesdale, Donham, Franks, Klingerman, Kirk.







*First Row:* S. Montgomery, Hart, Painter, Howard, Gonser, Moyer, Hancock, Myers, Gilliatt, P. Wilson, Greek.  
*Second Row:* Eichhorst, Ducker, Boatman, Annear, Schlegel, Rider, Sutton, Harrod, Black, McKain, Quakenbush, E. Mitchell.  
*Third Row:* Huehls, Freed, Enyart, Shaker, Good, Meers, Shatto, Hague, Powell, M. Mitchell, Waitt, Nicodemus, Solomon.

## Philalethea

“Be it thy pride to strengthen  
The womanhood of all  
Who come within thy portals,  
And answer to thy call.”

Philalethea endeavors to fulfill her purpose, printed above, by commanding the best that her members can give in parliamentary order, productions, extemporaneous and impromptu speaking, orations, and music.

Because of the ideals of the society, the members feel it is their privilege as well as responsibility to uphold the standards. Philalethea has a rich heritage and she is justly proud of her former members who have proven themselves since leaving the society hall.

The sponsor of the society is Miss Weaver, who has been very kind and helpful for the unfailing advice she has given.

## Philomusea

Philomusea, the black and gold,  
Our hopes, our fears are thine;  
Round every earnest, trusting son  
Thy sheltering arms entwine.  
We cherish thee in faith and hope,  
To thee our laurels bring;  
In token of our loyal love  
This song of praise we sing.

The excellent training and pleasure derived from the fellowship within a literary society is without question one of the greatest benefits to college life and a great source of pleasant memories. Friendships are made even more lasting by the fellowship shared here. While reminiscing over our college life some of the most outstanding and helpful experiences were met here.

Training the members in parliamentary law, and giving practice in literary productions, as: written and musical productions, extemporaneous speaking, and impromptus all prove to be very valuable.

With nothing but praises for Philomusea, we are hoping that this year will be another stepping stone to the oncoming years.

*Top Row:* P. Smith, Rose, Beitler, VanDeusen, Cravens, D. Smith, Pellett, Bushee, Kenoyer, Gorbett, Willhite.

*Second Row:* Andrews, Hamner, Cook, Ducker, G. Smith, Brooks, Mumaw, Walker, Long, Chambers.

*Third Row:* Cole, Moore, Jacobs, Dipert, Livengood, Horner, A. Garriott, Hudson, E. Garriott.

*Fourth Row:* Orahood, Breedlove, R. Smith, Simmerman, LaChance, Baker, Brett, Rothenberger, Everitt, Harritt.





*First Row:* Gilliatt, Beck (President), Chambers.  
*Second Row:* Montgomery, Rider, Black, Milhouse.  
*Third Row:* Miss Taylor (Sponsor), Shaker, Slabaugh, Good, K. Nicodemus.

## Y. W. C. A.

"To promote the all-round welfare of young women, to develop the culture of its members, and the propagation of knowledge, morality, and friendship."

This is the purpose of our Y.W.C.A. We attempt to achieve these goals through our varied weekly programs of music, book reviews, plays, inspiration, recreations, and talks on current affairs and problems.

We cooperate with the Y.M.C.A. in promoting the social activities on the campus. These have included this year the big mixer, banquets, skates, and the spring festival.



## Y. M. C. A.

When speaking of the Y.M.C.A. of Indiana Central, it must be remembered that we are first, last and always a Christian organization. The Y.M. at Central is very closely linked with the State and National Y.M.C.A. organizations. Through these channels it has been possible for us to bring outstanding speakers and entertainers to our campus for the benefit of all.

The Y.M.C.A. is purely a student organization and is controlled by a student cabinet. On our campus this year the Y.M., in cooperation with the Y.W.C.A., has tried to provide not only a program of Christian living, but also one of social activity.

When thinking of the Y.M.C.A., its influence and work on the campus, let us first consider this verse of scripture: "Seek ye first the Kingdom of God and His righteousness and all these things shall be added unto you."

*Top Row:* Kirkpatrick, Rose, D. Smith, Frey, Brenneman, Wright.

*Second Row:* Dr. Gilliatt (Advisor), Brooks, Chambers, Swengel (President), Livengood.





*First Row:* Hancock, Andrew, Brown, Thomson, Pres.

*Second Row:* Hoyt, (Advisor) Nicodemus, Rothenberger, Chambers, Black.

*Third Row:* Brooks, Horner, Cravens, Enyart, Dr. Turley (Advisor), Livengood.

## Student Volunteer Cabinet

The Student Volunteers, a group of Christian young people, who are directing their lives into Christian service in church, school, and business, assemble in the local church auditorium every Thursday evening for a program of devotions and inspiration.

The Volunteer group sponsors a World Friendship project on the campus which helps support a student missionary in Africa, conducts a monthly service at Wheeler Mission, and sends deputation groups to put on programs in churches in the state. This group is doing a fine piece of work on the campus and is giving much needed experience to young Christian workers.

## Christian Endeavor Cabinet

The College Christian Endeavor provides an opportunity for interesting discussion of topics pertaining to general Christian living. It enables many to participate in its meetings who would not otherwise have an opportunity to express their views. The Endeavor is also of value in that it promotes and encourages those to take part who have ability and experience. Those attending regularly may obtain much experience for later religious work.

The president of the organization is chosen by the retiring Cabinet. He, or she, then selects the new cabinet members, with the approval of the retiring Cabinet. The Christian Endeavor is an active and consistent organization.

*Top Row:* Brooks, Zimmerman, Kenoyer, Everitt, Pres.

*Second Row:* Milhouse, Brown, Solomon, Howard.







*First Row:* Gilliatt, M. Davis, Myers, Chambers, Gilliatt (Director), Glick, Snyder, S. Montgomery, Greek.  
*Second Row:* McKain, Donaldson, Schlegel, Seymour, Haberman, Ringo, E. Smith, B. Smith, Rider, Hart.  
*Third Row:* Breedlove, Tryon, Brooks, Kenoyer, W. Baker, Good, Rose, Pellett, Bare, Jacobs, Eherenman, Ratliff.

## Chorus

Under the direction of Mrs. Ethel Gilliatt, the chorus has progressed splendidly this year, singing for the most part sacred selections. The group sings many of their selections a capella.

One of the most appreciated programs of the group was the presentation of the "Messiah" by Handel during the Christmas season. This same program was also given at the Southport Presbyterian Church. The chorus has also put on programs in the following places: First Baptist Church, First United Brethren Church, Broadway Methodist Church, and the Irvington Methodist Church. All these churches are in the city.

The final program of the chorus was given on the evening of May twelfth.

## Band

Although the number of pieces in the band has been decreased this year over past year, the band has had quite a successful year, creating the most interest at the basketball games. The personnel is made up largely of underclassmen which means better bands in the future.

We believe, that under the splendid leadership of Professor Shadley, and with the inauguration of the new letter-honor system, the band will be a fine asset on our campus.

Professor Shadley is seen standing in the rear at the right.





*Tenors:* Paul Tryon, David Livengood.  
*Sopranos:* Maxine Black, Geraldine Gilliatt.  
*Altos:* Ruth Chambers, Ida Mae Good.  
*Basses:* Marshall Chambers, Ralph Smith.

## Madrigal Singers

Under the able leadership of Mrs. Ethel Gilliatt, the Madrigal Singers have fulfilled many engagements during the college year, giving both secular and sacred numbers. In October, the Madrigal Singers travelled to the Elkhart Castle United Brethren Church to give a full program. Again in January the group travelled to the New Salem high school to give a similar program. This group also appeared in the city on several occasions, as well as putting on programs in chapel, giving the final program in March.

Miss Helen Thomas Martin was the accompanist during the first semester, and Miss Kathryn Nicodemus filled this position the second semester.



## Concert Mixed Quartet

The Concert Mixed Quartet is endeavoring to carry out the spirit of the college through its musical programs and contacts with young people in churches, schools, and clubs.

Over fifty appearances have been made this school year in the various churches throughout the constituency. Just now the group is planning a extensive tour for the summer months.

A display of college pictures, literature, and banners, help to create educational interest in each program as well as an interest in the college.

Eugene Mogle, Manager and Tenor; Ruth Chambers, Soprano; Kathryn Nicodemus, Accompanist; Ida Mae Good, Alto; Wilbur Kenoyer, Bass.





## Gospel Team

DeLoss Wonham, Manager, Marimba, Pianist.  
Anna Mary Glick, Violinist, Pianist.  
Lillian Hart, Pianist, Contralto Soloist.  
Austin Pellett, Trombonist.

## Latin Club

*Top Row:* Andrews, Peters, Wright, Meers, McCubbins, Cook.

*Second Row:* Mrs. Anna Dale Kek (Sponsor), Petty, Montgomery, Hill, Phillips, Perry.

*Third Row:* Harvey, McGee, Wilkins, Glick, Brown.



## Oracle Staff

The editing of a year book is far from being the work of one person. Editing a book is similar to playing basketball: If we intend to succeed, we must all work together for a common good. This year the Oracle Staff has been a nice and an easy group with which to work. Each one has done his or her work without offering a complaint, but rather with the idea that "this is our work; let's do it."

I, as editor, wish to thank Mr. Kek most graciously, not only for the patience in advising, but also for the time he spent in taking so many of the group pictures. We really appreciate your work, Mr. Kek.

Personally, I wish to thank all the members of the staff, who have worked so well in their various capacities: Mark Braford, Business Manager; Ralph Hudson and Martha Shepherd, Snap-shot Editors; William Spray and Omar Breedlove, Sports Editors; Ben Miller and Lois Fruth, Joke Editors; Geraldine Gilliatt and Elva Thurston, Calendar Editors; James Horner and Charlotte Wallace, Literary Editors; and Dwight Smith, Associate Editor. Again I wish to thank Charlotte Wallace for helping me in typing the write-ups. Each one of your subscriptions has helped in making this Oracle possible.

I am sure that I speak for the staff when I say that we have not regretted so single moment spent in working on this book. It has meant long hours and hard work, mingled with worries, but if you receive any enjoyment from looking through the Oracle of nineteen hundred and thirty-nine, we will feel that our time has been well spent.

*Top Row:* Chambers, Editor; Spray, B. Miller, D. Smith, Horner, Braford.  
*Second Row:* Gilliatt, Thurston, Livengood, Wallace, Breedlove, Shepherd.







*First Row:* Frances Snoddy, Geraldine Gilliatt, Marjorie Hunt, Martha Shepherd, Frances St. John, Juanita Smith.  
*Second Row:* Anna Mary Glick, David Livengood, George Garriott, Roma Belle Slabaugh, Darryl Faith, Eleanor Phillips, Ralph Smith.

## Dramatics Club

Scene: "The Taming of the Shrew."



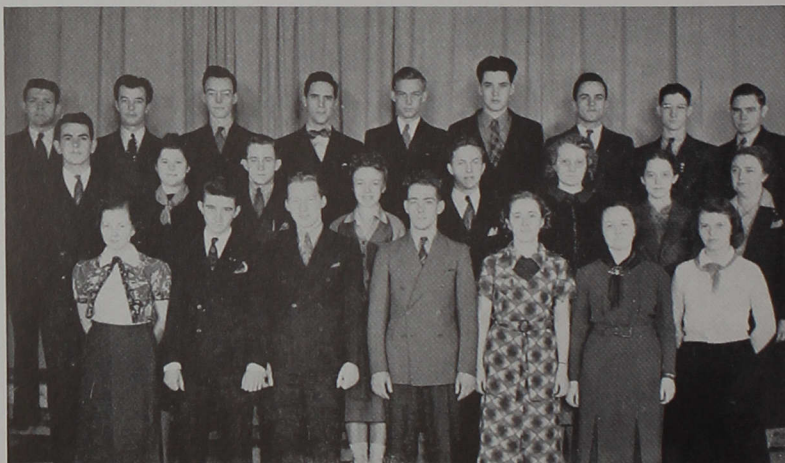


*First Row:* Maxine Black, Helen Solomon, Helen Todd Huehls, Juanita Smith.  
*Second Row:* David Livengood, Elsie Beck, chairman, Bruce Wright, Marion Truesdale.

## Speech Arts Honor Society

Scene from Senior Play "Outward Bound."





*First Row:* Hancock, LaChance, Eherenman, Stoneburner, Montgomery, Howard, Annear.  
*Second Row:* Knecht, Waitt, Truesdale, Chambers, Livengood, Babbitt, Black, Miss Weimar, faculty advisor.  
*Third Row:* Griffith, Editor, Faith, Kenoyer, Emery, Frey, Bedwell, Brenneman, Willhite, V. Grose.

## Reflector Staff

The Reflector is the monthly publication of the student body of the college. Its total circulation averages about four thousand copies each month. Each student receives a copy, and the rest are mailed to alumni, pastors, former students, and prospective students.

This year a different plan was used in getting the copy written. Formerly, staff members were chosen by the editor. During the first semester every member of the journalism class was automatically on the Reflector staff. Class assignments were stories for the paper, which gives the students practical experience in usage of correct English and good composition.



# *Campus Life . . .*





Heavy Load



Dopes



Miss Hoyt



Gym Class



Grins



Nutty Gang



Be Careful



Sunny Day



Squirrels



Whee!



Come Gals



Soup's On



Take Note

Big Shot  
(Bonham)



????



Sh-h



Window  
Gazers



"Y.W."



Pals

## Highlights of Our College Year

By GERALDINE GILLIATT and ELVA THURSTON

On the twelfth of September we all did come back  
To meet our old friends and new ones right soon,  
To get some more knowledge and gain some more facts.

The walk-outs were grand and we came to know  
Our freshies and thought they were some  
And at the big mixer were new and old beaux  
With all their fine ladies, and did we have fun!

Next in events and to our amaze  
The sophs were pulled in at Longacre Creek,  
Then 'round the bonfire our voices we raised,  
In songs and shouts and laughter and speech.

Then to the gym to try once more  
Our luck and skill at the skates of last year  
With bouncings, slips, and spills on the floor  
Signs of torn clothes and sore knees soon appeared.

In the month of October our freshies came out  
To the upperclass parties given for their stead,  
And the faculty entertained without any doubt  
In a most royal manner, everyone said.

The Thanksgiving banquet on Tuesday night  
Was given for students, faculty, and all;  
A waiter and waitress in black and white  
Carried the food to the dining hall.

The Choir gave The Messiah on Sunday night  
The dorm parties followed with their Christmas cheer.  
We all sang carols in the bright moonlight,  
Vacation, merry Christmas, and happy New Year.

The Major Production was "Taming the Shrew",  
A maid in an elegant costume was dressed,  
She frightened her kin and the servants too,  
Then taught by her lord she behaved at her best.

Old friends came back for the homecoming day,  
Then after the banquet for all our guests  
Central beat Manchester in an over-time play,  
Then 'twas time for the final exams and tests.

At our "Sweetheart Banquet" the girls played host  
While the fellows displayed in a handsome way  
Their artistic ability of which many did boast  
Thus ended the fun of four leap days.

The Y Banquet followed on Wednesday night,  
Inaugurating each president for the coming year.  
The poetry speaking was next on our college lights  
And the concert by the octet was quite pleasing to hear.

Easter Vacation was early in the Spring,  
A nice long week, then return Sunday night.  
The literary banquet was a beautiful thing,  
All the girls in their formals with flowers so bright.

The Major Production was especially good,  
Hickman and Riley gave a recital in May,  
The May Morning Breakfast was one that could  
Be eaten and liked on every day.

The Juniors and Seniors went to Hollyhock Hill  
To the final banquet for our Senior Pals  
The Y gave a festival which lasted till  
We had had the most fun and the biggest smiles.

The Honors Day Program took place very soon,  
Then the Senior play which we long shall remember  
Commencement, baccalaureate on the ninth day of June,  
'Twas farewell to our friends 'til the next September.





Dicks' Lambs



In Go The Sophomores



Happy?



What a Pose



A Short, Short Story



"Chummy"



Lab Helpers



Summer Travelers



Studious?



Mens Hall Lake



Contented



Contented



Cooks



Two Roses



Happy?



Uncle Elmer



Bean Pitchers



"Shoot 'em"



Worker



Good Bye



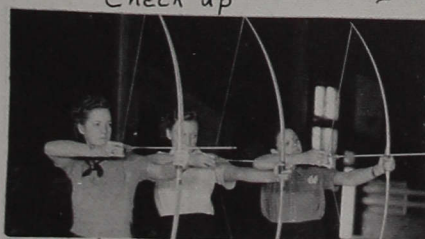
"Check up"



Hot Dog!



"Pals"



"Bull's Eye"



Myrtle



High



School



Day

## College Humor

By BEN MILLER and LOIS FRUTH

Aldean Painter: "Do you serve crabs here?"

Waiter: "We serve anyone; sit down!"

Hep Rider: "What are the people of Illinois noted for?"

Showalter: "The people of Illinois are known for their stupidity."

Hep: "Wherever did you get that information?"

Harve: "From our book. It says the population of Illinois is very dense."

Census-taker: "How many in your family?"

D. Bonne: "Five. Me, the old man, the kid, cow, and cat."

Census-taker: "And the politics of the family?"

D. Bonne: "Mixed. I'm a republican, the old man's a democrat, the kid's wet, the cow's dry, and the cat's a communist."

1905: "Look, look! There's an auto."

1930: "Look, look! There's a horse."

1945: "Look, look! There's a pedestrian."

Haramy: "We have heard all about the duties of the senators and congressmen. Miss Potts, can you tell us the duties of the chaplain?"

Doris Potts: "The chaplain looks the senators all over and then prays for the country."

Overheard in the club:

Junior: "You can sure tell this is a Christian institution."

Freshman: "How?"

Junior: "We have a burnt offering every day."

Miss Taylor assigned a composition to be written, containing 250 words. The next morning Jim Miller was asked to read his. This is what he had written:

"My uncle was driving his new car one day, and he had a puncture. . . The other 236 words are not fit for publication."

D. Smith: "Indiana Central is a match making institution."

M. Annear: "Yes, and it just burns me up."

He had proposed, and the girl had turned him down.

Marsh Chambers: "Oh, well, I suppose I'll never marry now."

Maxine Black: "You silly boy, just because I turned you down, that doesn't mean that other girls will do the same."

Marsh: "Of course it does, if you won't have me, who will?"

Jane H.: "Isn't it a pity that handsome men are always so conceited?"

Hershel Eaton: "Not always, little girl; I'm not."

Ora Clayton: "What's the matter, Joe?"

Joe Bohr: "I am so worried. I wrote two notes, one to my broker asking him if he thought I was a fool, and the other asking my girl if she would marry me. While I was out somebody telephoned 'Yes', and I don't know which of them it was!"

Can you solve this?

X equals boy

Y equals girl

Z equals chaperon

XYZ equals misery

XY—Z equals Bliss.

Miss Weaver: "Name two famous poems by Homer."

W. Kenoyer: "The Idiot and the Oddity."

Horried father: "Engaged to four girls at once! How do you explain such shameless conduct?"

Ray Ruff: "I don't know. I guess Cupid must have shot me with a machine gun."





Gubi Helen



"Donny'll Winnie yet"



Rose'll Carole

# MATCH FACTORY RESULTS

or

## THE BEST IN LIFE



Mabel + Gus



"I DO"



"Le-lands Margare"



"What a racket"



"Black Marsh"



Dave + Ruth  
(Northern Ind)



Brenny-Jane



Wedding  
Bets



Don't do That



"Bobbs Soon"



Shep-Art



S. E. Montgomery



"Hep"



D. Bonine



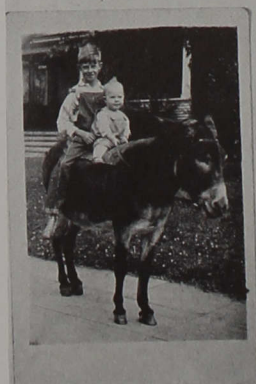
Harvey



"J. A. C."



"Everitt"



Mary (in Overalls - and ears)



"Hank"



"Dorothy"



Ruth Howard



Swinnell



Mcete



Bohr



"Danny"



"Brenne"



"A little Faith"



Stone



B. Smith



Ruby Everett



Marjorie May



J. Wilson: "Whenever I have to borrow money I try to get it from a pessimist."

B. Wagner: "Why?"

J. Wilson: "A pessimist never expects to get it back."

Hoot: "Over in Illinois we've got a lilac bush fifty feet high."

A. Morgan: "I wish I could lilac that."

Borg: "Ouch! I bumped my crazy bone!"

Thomas: "Oh, well, comb your hair right and the bump won't show."

Coach Good: "Can you give me an example of wasted energy?"

Potter: "Yes, telling a hair-raising story to a bald-headed man."

Ratliff: "Miss Hague, er, Fern, there's a question I've been wanting to ask you for weeks."

F. Hague: "Carry on, old thing, the answer's been waiting for months."

A bore is someone who insists upon talking about himself when you want to talk about yourself.

Griffith: "I hear your friend 'Lefty' has a job."

LaChance: "Yeah, ain't it funny what some folks will do for money?"

Donham: "I'm just a poor boy trying to get ahead."

Shadley: "That's fine; you certainly need one."

Dave Livengood: "Why is a newspaper like a woman?"

Ruthie T.: "Because every man should have one of his own and not look at his neighbor's."

Parting is such sweet sorrow. I think we'll part again tomorrow.

Prof. Durban (to his chemistry class): "Anybody here absent?"

Alice: "John! John! Wake up, John, there are burglars in the pantry and they are eating all my pies."

John: "Well, what do we care, so long as they don't die in the house?"

Haramy: "What did you say?"

Keene: "Nothing!"

Haramy: "Yes, I know, but just how did you say it this time?"

Conversation overheard in a chicken incubator: "Come on, fellows, let's go! Last one out is the rotten egg."

Prof. Davis (shooting the breeze in Geography): "How proudly the flag waves over this beautiful land. But she ought to wave over other lands, too. Why doesn't she wave over Kataganzu, Lollapalooza, the Islands of Bazzazza? Why—?"

Bitsy Brazeal: "Perhaps they aren't getting as much wind as we are in this land."

Question: What is a tactful way for a girl's father to let her boy friend know that it's time for him to be going home?

Answer: Father may casually walk through the living room with a box of breakfast food held conspicuously in his hand.

Taylor: "Willie, your answer is almost as clear as mud."

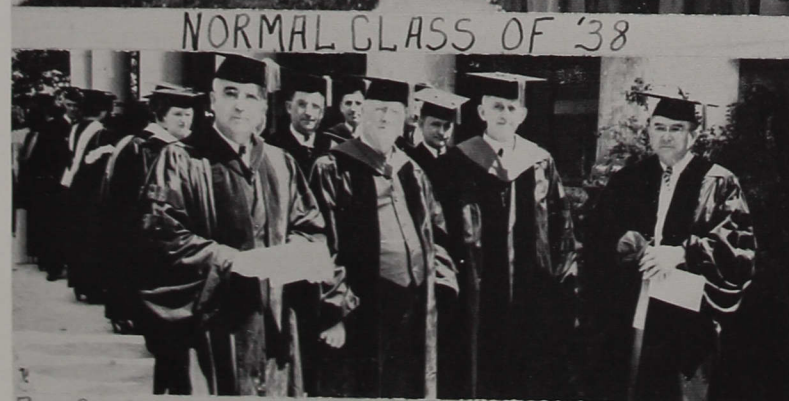
Fredenberger: "Well, that covers the ground, doesn't it?"

Don Emery to Dr. Morgan: "Oh, Prof., I saw such a funny old fossil in the Museum today. I thought of you at once."

Haramy: "Can you give the contents of the Monroe Doctrine?"

G. Smith, in answering the question, wrote: "Yes!"

Those who pride themselves on being hard-boiled usually are only half-baked.



Pres. Good - Dr. Lake - Bishop Fout - Hon. Fred Hoke (Speaker)



## Seniors

Andrew, Mary Ellen	Clay City, Ind.	Longenbaugh, Loren	Huntington, Ind.
Baker, Otis	Decatur, Ind.	Loomis, Wilfred Elza	Butler, Ind.
Barker, Dwight	Bloomfield, Ind.	Lowe, Myron	Butler, Ind.
Beck, Elsie	Minneapolis, Minn.	McDonald, Esta	Linton, Ind.
Bohr, Joseph	Hartford City, Ind.	McGee, Shereen	Greenwood, Ind.
Borg, Franklin	Rochester, Minn.	Moffatt, Arthur	Monessen, Pa.
Brazeal, Frances	Indianapolis, Ind.	Moore, Orval	Indianapolis, Ind.
Clayton, Ora	Greenfield, Ind.	Morgan, Bennie	Clayton, Ind.
Ducker, Florence	Rochester, Ind.	Osman, Mitchell	Indianapolis, Ind.
Ducker, Paul	Rochester, Ind.	Potter, Henry	Paragon, Ind.
Enyart, Arabelle	Lucerne, Ind.	Powell, Anita	Hillpoint, Wis.
Everitt, Harold	Mason City, Ill.	Riley, George	Lawrence, Ind.
Faith, Darryl	Corydon, Ind.	Ruff, Raymond	Plymouth, Ind.
Franks, Carleton	Corydon, Ind.	Shaker, Alberta	Hillsboro, Wis.
Garriott, Augustus	Scottsburg, Ind.	Sharpe, William	Rushville, Ind.
Gillan, Robert	Thorntown, Ind.	Smith, Esther	Indianapolis, Ind.
Godwin, Harold	Washington, Ind.	Smith, Paul	Indianapolis, Ind.
Gubi, Stephen	Pershing, Ind.	Smith, Ralph	Corydon, Ind.
Henricks, Marvin	Minneapolis, Minn.	Snoddy, Frances	Indianapolis, Ind.
Hickman, Jane	Indianapolis, Ind.	Solomon, Helen	Plymouth, Ind.
Huehls, Helen (Todd)	Indianapolis, Ind.	Swengel, Leland	Seymour, Ind.
Keene, Owen	Indianapolis, Ind.	Wright, Bruce	Clay City, Ind.
Kirkpatrick, John	Frankfort, Ind.	Zimmerman, William	Syracuse, Ind.
Lamb, Ethel	Chicago, Ill.	Orme, William	Indianapolis, Ind.

## Juniors

Beitler, Lavern	Geneva, Ind.	Miller, Ben	Tyner, Ind.
Braford, Mark	Austin, Minn.	Mogle, Eugene	Indianapolis, Ind.
Breedlove, Omar	Indianapolis, Ind.	Phillips, Eleanor	Central Square, N. Y.
Callison, Helen	Fort Wayne, Ind.	Powell, Clara	Clay City, Ill.
Chambers, Marshall	Elkhart, Ind.	Quakenbush, Ruth	Shoals, Ind.
Dipert, Merlin	Grovertown, Ind.	Rice, Harold	Aurora, Ind.
Fruth, Lois	Crawfordsville, Ind.	Rothenberber, Daniel	Pierceton, Ind.
Gilliatt, Geraldine	Indianapolis, Ind.	Rucker, Paul	Cortland, Ind.
Glick, Anna Mary	Young America, Ind.	Shaffer, Lee	Brookville, Ind.
Green, Frank	Indianapolis, Ind.	Shepherd, Martha	Greenwood, Ind.
Hiatt, Lloyd	Portland, Ind.	Slabaugh, Roma	Elkhart, Ind.
Hinshaw, George	Gary, Ind.	Smith, Dwight	Cincinnati, Ohio
Horner, James	Bedford, Ind.	Spray, William	Medora, Ind.
Hudson, Ralph	Decatur, Ill.	Stickney, Deloris	Indianapolis, Ind.
Hunt, Marjorie	Lebanon, Ind.	Thurston, Elva	Shelbyville, Ind.
Kirk, Lester	Hazleton, Ind.	Underwood, Merrill	Indianapolis, Ind.
Livengood, David	Warsaw, Ind.	Wallace, Charlotte	Indianapolis, Ind.
McCubbins, Thomas	Indianapolis, Ind.	Ward, Edward	Trotwood, Ohio
McCubbins, Millard	Indianapolis, Ind.	Weddell, Arthur	Medora, Ind.
Meers, Bonnie	Bloomington, Ill.	Riley, George	North Webster, Ind.

## Sophomores

Adams, Russell	Acton, Ind.	Babbitt, Wavelene	Dunkirk, Ind.
Anderson, Lolamae	Hammond, Ind.	Barker, Emerson	Bloomfield, Ind.
Annear, Myra	Richland Center, Wis.	Bedwell, Lowell	Linton, Ind.
Babb, Jackson	Fort Wayne, Ind.	Black, Maxine	Lafayette, Ind.



Brazeal, Aileene	Indianapolis, Ind.	Milhouse, Dorothy	St. Francisville, Ill.
Brenneman, Walter	Wakarusa, Ind.	Miller, Erschel	Laconia, Ind.
Brooks, Kenneth	Bloomington, Ill.	Mitchell, Anita	Hardinsburg, Ind.
Brooks, Lillian	Indianapolis, Ind.	Mitchell, Ellen	Scottsburg, Ind.
Brown, Doris	Indianapolis, Ind.	Montgomery, Margaret	Bloomington, Ill.
Brown, Frances	Decatur, Ill.	Moyer, Lois Lee	Clay City, Ind.
Chambers, Ruth	Elkhart, Ind.	Mullin, Hazel	Brookville, Ind.
Core, Gordon	Blue River, Wis.	Mumaw, Martin	Odon, Ind.
Davis, Chester	Indianapolis, Ind.	Myers, Mildred	Lebanon, Ind.
Donaldson, Ruth	Oxford, Ind.	Nicodemus, Kathryn	Nappanee, Ind.
Donham, DeLoss	New Castle, Ind.	Pfeiffer, Ethel	Star City, Ind.
Eaton, Hershel	Walkerton, Ind.	Radez, Frances	Indianapolis, Ind.
Eaton, Marjorie	Battle Creek, Mich.	Ratliff, Derrill	Hartford City, Ind.
Eberhardt, Scott	Indianapolis, Ind.	Rider, Henrietta	Westfield, Ill.
Edge, Fred	Buchhannon, W. Va.	Rose, Cloyd	Olney, Ill.
Emery, Donald	Indianapolis, Ind.	Salzman, Orville	Bloomington, Ill.
Frey, Ralph	Danville, Ill.	Schlegel, Clarena	Clay City, Ind.
Funk, Neva	Kewanna, Ind.	Shatto, Margaret	Upland, Ind.
Garriott, Eugene	Scottsburg, Ind.	Showalter, Harvey	Richmond, Ind.
Gates, Virginia	Kokomo, Ind.	Simmerman, Howard	Pendleton, Ind.
Graham, Eulala	Pendleton, Ind.	Smith, Juanita	Indianapolis, Ind.
Griffith, Richard	Durham, Calif.	Smith, Julia Elizabeth	Calumet City, Ill.
Hague, Fern	Chicago, Ill.	Smith, Wilma	Thorntown, Ind.
Hancock, Harriet	Marion, Ind.	Stoneburner, Alva	Indianapolis, Ind.
Hannon, Joseph	Indianapolis, Ind.	Swisher, Ralph	Columbus, Ind.
Harrod, LaVerne	Scottsburg, Ind.	Thomas, Donald	Rochester, Minn.
Hartsock, Maurice	Indianapolis, Ind.	Thomson, Ruth	Janesville, Wis.
Herbert, Glendon	Greentown, Ind.	Trowbridge, Norris	Palmyra, Ind.
Herd, Margaret	Kewanna, Ind.	Truesdale, Marion	Billingham, Wis.
Hines, Tom	Indianapolis, Ind.	Turner, Dorothy	Long View, Ill.
Holzhausen, Mervin	Greenfield, Ind.	Turner, Tracy	Richmond, Ind.
Hommel, George	Indianapolis, Ind.	Wagner, John	Kokomo, Ind.
Howard, Margaret	Hartford City, Ind.	Wagner, Robert	Kokomo, Ind.
Keefe, Thomas	Veedersburg, Ind.	Waitt, Pauline	Sheridan, Ind.
Kenoyer, Wilbur	Highland, Ind.	Weekly, Elsie	Cortland, Ind.
Klingerman, Chester	Plymouth, Ind.	Whiteman, Frances	Frankfort, Ind.
Long, Charles	Syracuse, Ind.	Willhite, Leon	Veedersburg, Ind.
McKain, Esther	Huntington, Ind.	Wilson, Joel	South Bend, Ind.
Maass, Elizabeth	Indianapolis, Ind.	Wilson, Phoebe	Wabash, Ind.
Martinie, Decemma	Longview, Ill.		

## Freshmen

Adams, Clifton	Acton, Ind.	Bonne, Dorothy	Noblesville, Ind.
Adams, Julius	Acton, Ind.	Bowers, Charles	Middletown, Ind.
Addison, Martha	Indianapolis, Ind.	Brett, William	Vevay, Ind.
Andrew, John	Clay City, Ind.	Brinson, Jane	Linton, Ind.
Apple, Charles	McCordsville, Ind.	Brown, Cherry	Indianapolis, Ind.
Arford, Robert	Odon, Ind.	Bushee, William	Ossian, Ind.
Baker, Wendell	Orleans, Ind.	Campbell, Annabelle	Butler, Ind.
Bare, Lucian	Clay City, Ind.	Carnes, James	Indianapolis, Ind.
Bean, Hope	Liberty, Ind.	Clutton, Betty	Indianapolis, Ind.
Bennett, Betty Jo	Hartford City, Ind.	Cole, Orville	Findlay, Ill.
Birden, John	Sheridan, Ind.	Cook, Dale	St. Paul, Ind.
Bloomington, Ray	Bristol, Ind.	Cravens, Sherman	Decatur, Ill.
Boatman, Marian	Olney, Ill.	Criswell, Harold	Beech Grove, Ind.

Davis, Frances	Birds, Ill.	Nice, Lucille	Flora, Ill.
Davis, Ralph	Indianapolis, Ind.	Nicodemus, Ruth	Nappanee, Ind.
Davis, Steward	Shipshewana, Ind.	Nicoson, Angus	Center Point, Ind.
Dickson, Harold	Noblesville, Ind.	Nierstheimer, Paul	Muncie, Ind.
Dunville, Mary	Indianapolis, Ind.	Oldaker, Birdie	Indianapolis, Ind.
Durham, Ellen	Whiteland, Ind.	Oliver, Lawrence	Alexandria, Ind.
Eherenman, Forrest	Warsaw, Ind.	Orahoad, Arbon	Kingman, Ind.
Eichhorst, Carrol	Olney, Ill.	Painter, Aldean	Dunkirk, Ind.
Everitt, Ruby	Mason City, Ill.	Painter, Robert	Minneapolis, Minn.
Fenton, Juanita	Sullivan, Ind.	Pellet, Austin	Butler, Ind.
Fredenberger, John	Marshall, Ind.	Perry, Daisy Mae	Indianapolis, Ind.
Freed, Vera	Odon, Ind.	Perry, Lee	Columbus, Ind.
Gillan, Lester	Thorntown, Ind.	Peter, Rebecca	Camden, Ind.
Gonser, Helen	Linton, Ind.	Pettes, Virginia	Waldron, Ind.
Gorbett, Donald	Sardinia, Ind.	Petty, Dorothy	Sumner, Ill.
Greek, Evelyn	Fort Wayne, Ind.	Piepenbrok, James	Indianapolis, Ind.
Grinyer, Allen	Eleroy, Ill.	Pinkstaff, Oris	Lawrenceville, Ill.
Grose, Herschel	South Bend, Ind.	Potts, Doris	Washington, Ind.
Gross, Victor	Colusa, Ill.	Ramsey, Carol	Indianapolis, Ind.
Haberman, Betty	Bourbon, Ind.	Ringo, Jane	Brazil, Ind.
Hammond, Richard	Perrysville, Ind.	Robb, Annabel	Lapel, Ind.
Hamner, Dale	Shelbyville, Ind.	Rooker, Robert	Indianapolis, Ind.
Hart, Lillian	Terre Haute, Ind.	Rose, Virginia	Rochester, Ind.
Harvey, Gene	Hardinsburg, Ind.	Schenk, Ernest	Indianapolis, Ind.
Haynes, Paul	Palmyra, Ind.	Schmidt, John	Hammond, Ind.
Heller, Arthur	Decatur, Ind.	Seymour, Vernice	Bremen, Ind.
Hill, Marjorie	Tyner, Ind.	Shaw, Benjamin	Markleville, Ind.
Holzhausen, Clyde	Greenfield, Ind.	Shoemaker, Treva	Wabash, Ind.
Hoot, Elwyn	Orangeville, Ill.	Sidebottom, Kenneth	Easton, Ill.
Hose, Viola	Butler, Ind.	Sidebottom, Mary	Easton, Ill.
Jackson, Annette	Plainfield, Ind.	Smith, Alice May	Marshall, Ill.
Jacobs, George	Decatur, Ill.	Smith, George	Indianapolis, Ind.
Johnson, Herbert	Bridgeport, Ind.	Snyder, Imo Gene	Huntington, Ind.
Johnson, Maribelle	Indianapolis, Ind.	Snyder, John	Indianapolis, Ind.
Jordan, Robert	Indianapolis, Ind.	Spangler, Luther	Beech Grove, Ind.
Kellum, Milton	Shirley, Ind.	Sprenger, Mary	Indianapolis, Ind.
Kerkhoff, Florence	Indianapolis, Ind.	Stickler, Leland	Anderson, Ind.
Knecht, John	Hartford City, Ind.	Stone, Philip	Jeffersonville, Ind.
Kritsch, Frances	Indianapolis, Ind.	Stuckey, Kenneth	Sardinia, Ind.
LaChance, Verdun	Oakland, Calif.	Swindell, Dorothy	Wilkinson, Ind.
Leslie, Frank	Indianapolis, Ind.	Throm, Violet	Indianapolis, Ind.
Lewis, Myron	Markleville, Ind.	Tiley, Wilma	Indianapolis, Ind.
Lewis, William	Morristown, Ind.	Tryon, Paul	Indianapolis, Ind.
Lightbody, Ray	Glasford, Ill.	Turner, Blake	Indianapolis, Ind.
McCrocklin, Dwight	Wabash, Ind.	Walker, Adolph	Mishawaka, Ind.
McDonald, James	Galveston, Ind.	Welling, Wilma	Greenfield, Ind.
McKenzie, Marvellen	Indianapolis, Ind.	Wilma, LaDonna	Vernon, Ind.
McShurley, Floyd	New Castle, Ind.	Wills, Cliff	New Castle, Ind.
Meyer, Edna	Lezington, Ill.	Wilson, Roma	Wabash, Ind.
Miller, Gale	Tyner, Ind.	Wilt, Frederick	Pendleton, Ind.
Miller, James	Crawfordsville, Ind.	Witsman, Ival	Kingman, Ind.
Montgomery, Sarah	Hartford City, Ind.	Zeider, Emma	Kewanna, Ind.
Morgan, Lisabeth	Indianapolis, Ind.		

DEAR READER:

The editing of the Oracle this year has not been the work of any one person, but has been accomplished only by the cooperation of several business firms, faculty advisory, and each student of the campus. I wish to thank the following most sincerely:

THE INDIANAPOLIS ENGRAVING COMPANY for their splendid work, and for courtesies shown toward us.

THE INTERSTATE PRINTING COMPANY of Danville, Illinois, for their good work and their splendid cooperation.

MR. EVAN R. KEK, for the patience extended toward me when the work was the heaviest. Also for the service he rendered in taking most of the group pictures.

MR. BRUCE WRIGHT, editor of the Oracle last year, who offered helpful suggestions.

EVERY STUDENT who may have assisted in any way in the editing of the year book. Each one who buys an Oracle has helped in his small way in making the editing of it possible.

MARSHALL CHAMBERS, *Editor*.



. . . *Autographs* . . .









