

T H E 1 9 4 3

ORACLE








INDIANA CENTRAL  
COLLEGE  
LIBRARY



PRESENTED BY

Mrs. Helen Mowrey

THIS IS THE ORACLE  OF FORTY THREE  
WITH A YEARS STORY ABOUT YOU AND ME    
WITH PHOTOS AND DRAWINGS AND COPY TOO   
WE TELL ALL THAT'S RIGHT AND FREE 

INDIANA CENTRAL COLLEGE, INDIANAPOLIS



WORK! WORK!  
AND  
MORE WORK!

*L. J. Good*





378.05

I 390

1943

THE YEAR BEGAN WITH



PRESIDENT GOOD

TELLING US ALL HERE AT



CENTRAL

TO WORK



AND WORK IN WAR'S MOOD

AND PREPARE TO DO ALL THAT'S ESSENTIAL

...V-

73213

WE HAD IDEAS GALORE FOR OUR BOOK



BUT NONE OF THEM REALLY TOOK



WE COULDN'T DECIDE



WHICH TO CHOOSE

SO WE GIVE YOU

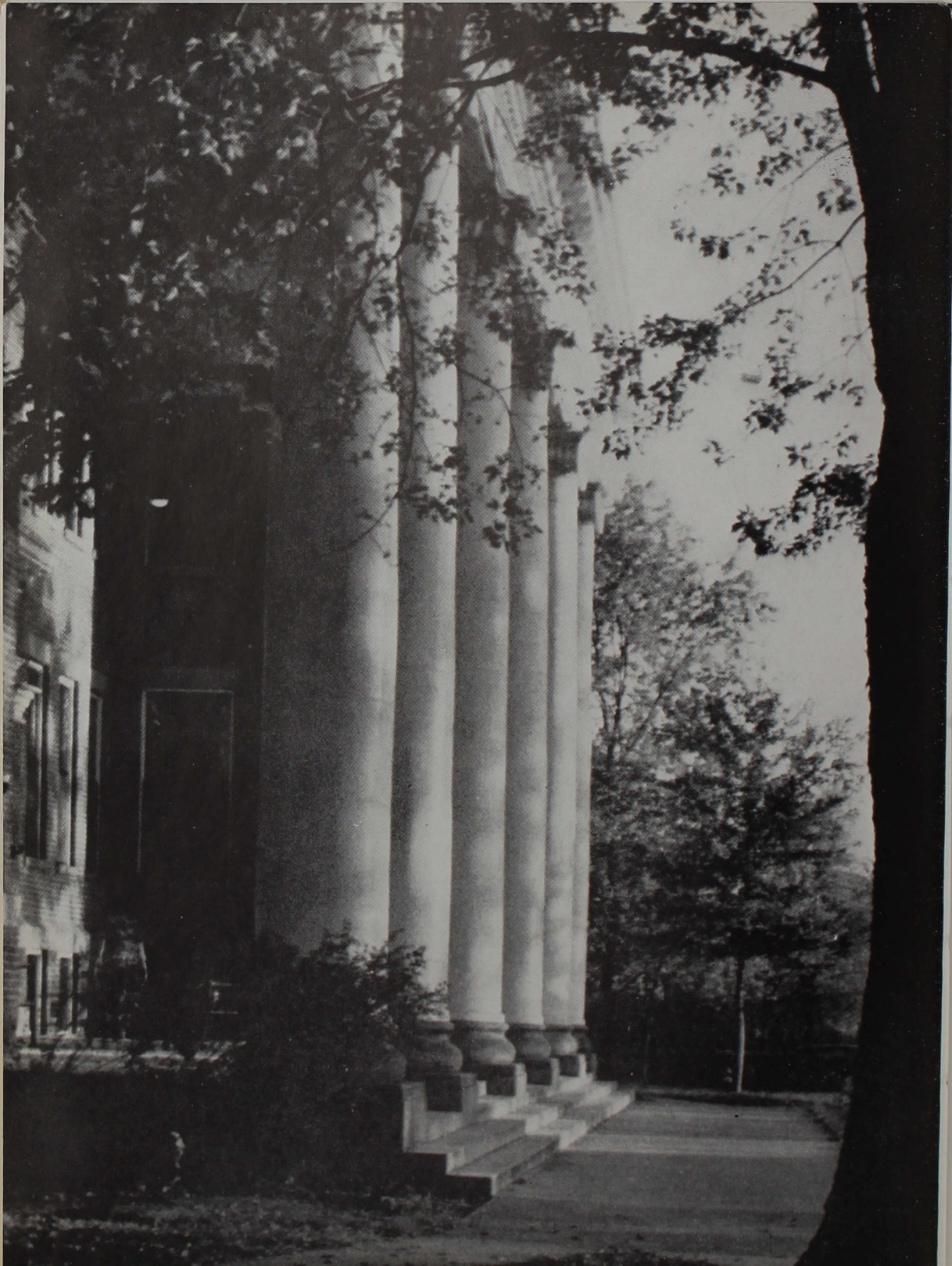


THE STORY TO PERUSE ....










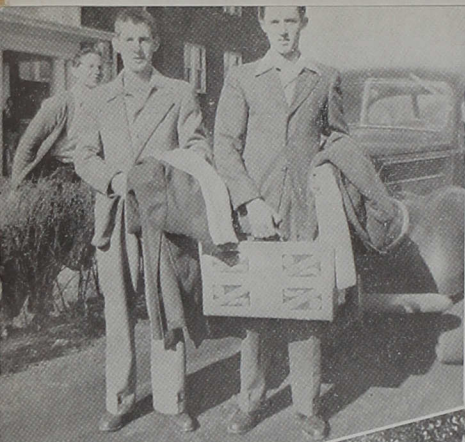


FROM SEPTEMBER TO MAY  OUR YEAR'S COMPLETE

WITH FIRST ON THE LIST  THE NEWS AND VIEWS

OF THE EVENTS THAT MADE OUR YEAR REplete

WITH THE HAPPENINGS  SO WORTH THESE REVIEWS 



In the army now . . .  
 They toiled in vain . . .  
 Hopeful freshmen . . .  
 At ease . . . Where  
 do we go from here?  
 . . . Handsome Bill  
 . . . That from these  
 honored dead . . . Big  
 shots! . . . Maiden on  
 the mound . . . A  
 Saler in the army.



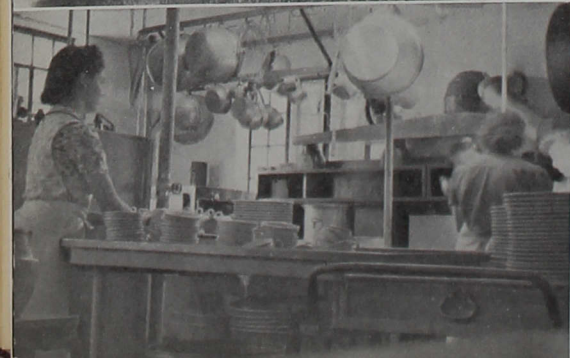
Nice kitty . . . What,  
no feathers, Leroy? . . .  
Bashful? . . . Elated  
Elnor . . . Three's a  
crowd . . . Twisted  
torsos . . . A heap of  
humanity . . . Faculty  
friends . . . Students  
. . . Quintet . . . Cave  
men . . . Snowbound  
. . . What's cookin'?  
. . . The long and  
short of it.







The pause that re-  
freshes . . . The hang-  
over . . . Finders  
keepers . . . Golddig-  
gers of 1943 . . .  
Marble(?) pillars . . .  
Toots II . . . How  
green was my valley  
. . . Chief cook and  
bottle washer . . . Mail  
for the male.

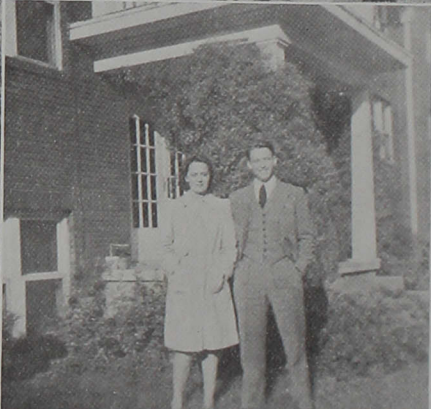
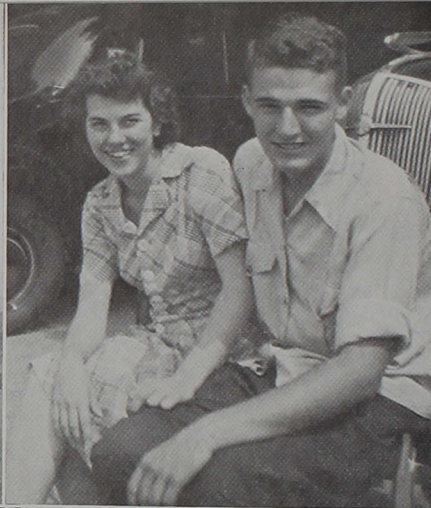
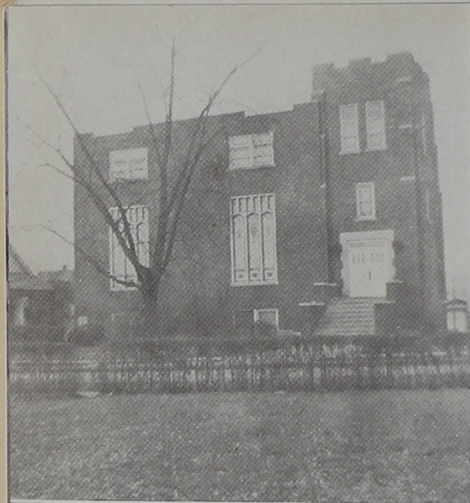




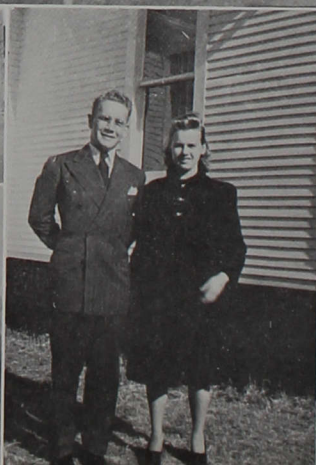
A couple of Gophers  
 . . . Us on a bus . . .  
 Keep your eye on the  
 ball . . . Escaped from  
 the zoo (?) . . . Who's  
 "Askin" her now? . . .  
 Three Suckers in bed  
 . . . Ride 'em, Charlie  
 . . . A jolly quintet . . .  
 Couples' paradise.







Where dreams come  
true . . . Tell us  
Moore . . . California,  
here we come . . . Life  
is one big picnic . . .  
Flying high . . . It  
won't be long now . . .  
Looking on the Leiter  
side of life . . . Well,  
Wells . . . Will he  
Mary Alice?





UPPER LEFT:

In spite of all the other work to be done the students do study.  
Here's proof!

LOWER LEFT:

In case you're wondering—It's Sadie Hawkin's Day at Indiana Central. The fellows are engaged in a pie-eating contest!

CENTER:

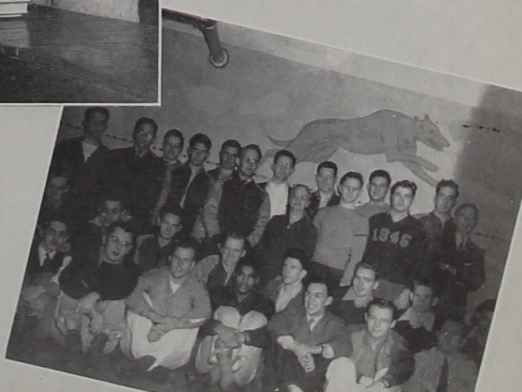
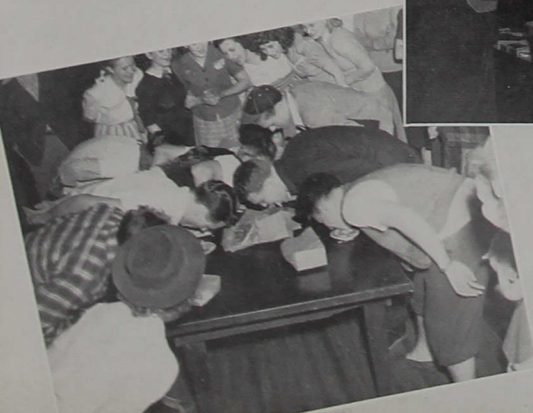
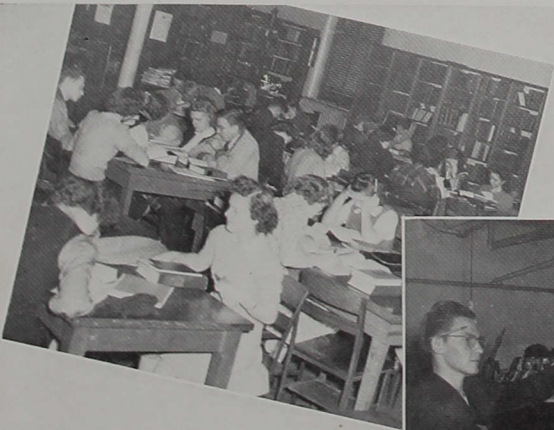
Believe it or not—that is a \$10 bill—in our own bookstore.

UPPER RIGHT:

Mary Rider, Campus Queen of '42, and her attendants.

LOWER RIGHT:

These fellows lived in Residence Hall before the Air Cadets moved in! They're in Dailey Hall now—





## PHYSICAL EDUCATION CLASSES

During the very strenuous times in which we live, these classes take on a new aspect. Their importance has increased by leaps and bounds because the fellows are looking forward to an increased program of physical activity and the girls feel that they must also be in better physical fettle.



Indiana Central is very fortunate in having in its student body various groups of energetic individuals. Represented below are groups of students from the music department who have been especially active on and around the campus this year. Top: The Quintet; LOWER LEFT: The Male Chorus; LOWER RIGHT: The Girl's Trio.









NOW THE SENIORS  WE PROUDLY PRESENT

AND ALSO THOSE WHO HOPE TO BE

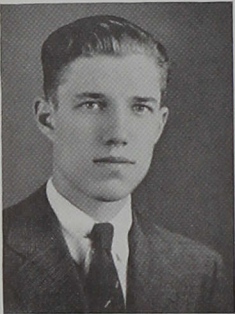


(IF TIME AND FORTUNE DO NOT PREVENT)



AS HONORED,  RESPECTED,  AND WISE AS THEY

# SENIORS



**Gordon Lake Adams**

B.S.

Beloit, Wisconsin

Majors: Chemistry, Mathematics.

Philomusea 1, 2, President 3, 4; "C" Association 1, 2, 3, 4; Track 1, 3, 4; Intramurals 1, 2, 3, 4; Class President 4; Science Club 2, 3; Oracle Staff 3.



**Louis Edward Beaver**

B.S.

Noblesville, Indiana

Majors: Chemistry, Biology

Philomusea 3, 4; Science Club 2, 3; Oracle Staff 3; Reflector 3; Class Treasurer 3.



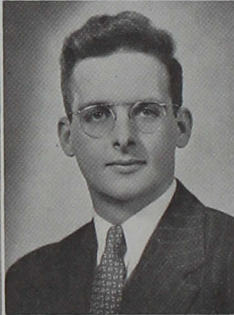
**Betty Jean Clutton**

B.S. in Education

Indianapolis, Indiana

Major: Education

Band 1, 2, 3, 4; Student Volunteers 1.



**Ralph A. Coddington**

B.S.

Lynn, Indiana

Majors: Chemistry, Mathematics

Intramurals 1, 2; Philomusea 2, 3, 4; Dormitory President 4.



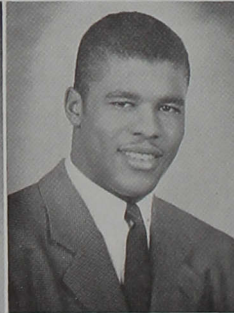
**Gordon Clark Core**

A.B.

Blue River, Wisconsin

Major: Philosophy

Student Volunteers 1, 2; Central Ministerial Association 3, 4.



**George Daniel Crowe**

A.B.

Franklin, Indiana

Majors: Physical Education, History

Basketball 1, 2, 3, 4; Baseball 1, 2, 3, 4; Track 1, 2, 3, 4; "C" Association 2, 3, 4; Intramurals 3, 4.



**William Warren Dalton**

B.S.

Clay City, Indiana

Major: Biology

Science Club 2, 3; Philomusea 2, 3, 4; Booster Club 2; President 4; Student Christian Association Council 3; Treasurer 4.



**Hallie May Davis**

A.B.

Churubusco, Indiana

Majors: Mathematics, Physical Education

Choir 1; Reflector 1, 2, 3, 4; Student Volunteers 1; Philalethea 1, 2, 3, 4; Student Christian Association Council 3, 4, Vice President 3; Intramurals 3, 4.



# SENIORS

**Ruth Imogene Dietz**

B.S. in Education

Brazil, Indiana

Majors: Education

Student Volunteers 1; Philalethea 1, 2, 3, President 4; Besta Vesta 2, 3, 4; Speech Arts 2, 3, 4; English Club 3, 4; Alpha Psi Omega 3, President 4; Gospel Team 3.

**Zelda Laurine Eimbrink**

B.S. in Education

Belmond, Iowa

Majors: Education, English

Waldorf Junior College 1, 2; Iowa State Teachers College 3; Indiana Central—Central Ministerial Association 4.



**Anna Catherine Emmert**

B.S. in Education

Brazil, Indiana

Major: Education

Alpha Psi Omega 3, 4; Intramurals 4; Philalethea 4.

**Clara Helen Files**

B.S. in Education

Flora, Illinois

Major: Education

Alpha Psi Omega 3, 4; Philalethea 1, 2, 3, President 4; Student Christian Association Council 4; Intramurals 1, 2, 4; Oracle Staff 3.



**Marian Ford**

A.B.

Indianapolis, Indiana

Majors: Home Economics, History

**Alice Fay Gahman**

A.B.

Craigville, Indiana

Majors: Mathematics, English

Student Volunteers 1; Philalethea 1, 2, 3, 4; English Club 3, 4.



**Donald Willard Gorbett**

A.B.

Westport, Indiana

Major: Philosophy

Intramurals 2; Student Pastor 3; Philomusea 2.

**Mildred Mae Hockersmith**

A.B.

Rushville, Indiana

Majors: Music, English

Philalethea 2, 3, 4; Student Volunteers 1; Student Christian Association Council 2, 3; Reflector 3; Gospel Team 2; Choir 2, 3; Girl's Chorus 4.



# SENIORS



**William Paul Howe**  
A.B.

Hartsville, Indiana  
Majors: Mathematics, Physical Education

Zetagathea 2, 3, 4; Basketball 1, 2, 3, 4; Baseball 3, 4; Track 2, 3; "C" Association 2, 3; President 4; Intramurals 1, 2, 3, 4; Dormitory President—Summer, 1942.



**Verdun Trenton LaChance**  
A.B.

Oakland, California

Major: Art

Philomusea 1; Sigma Alpha Mu 2, 4; Reflector 1; Central Ministerial Association 1, 2, 3, 4; Intramurals 1, 2, 3, 4.



**Charles Harvey McClung**  
A.B.

Kirklin, Indiana

Major: History

Philomusea 1, 2, 3, President 4; Male Chorus 1, 2, 3, 4; Central Ministerial Association 2, 3, President 4; Sigma Alpha Mu 1, 2, 3, President 4; Choir 1, 2, 3; Band 1, 2, 3, 4; Latin Club 1, 2, 3; Oracle 3; Quartets 2, 3, 4; Reflector 4; Dramatics 4; Track 3; Intramurals 3, 4; String Ensemble 1.



**Mildred Ann McKesson**  
A.B.

Walkerton, Indiana

Majors: Latin, English, Social Science

Philaethea 2, 3, 4; Latin Club 1, 2, 3, 4; English Club 3, 4.



**Louis Kenneth Kraft**  
A.B.

Dayton, Ohio

Majors: English, History

Class President 1; Y.M.C. A. Cabinet 1, 2; Student Christian Association Council 3, President 4; Zetagathea 3, President 4; Dramatics 3, 4; Oracle editor 3; Reflector 3.



**Rozelle Grace LaFavre**  
B.S. in Education

Puente, California

Major: Education

Chaffey Junior College 1, 2; Alpha Psi Omega 3, 4; Theacallosia 3, President 4; Intramurals 3.



**Mary Alice McKain**  
A.B.

Huntington, Indiana

Major: Music

Choir 1, 2; Intramurals 1, 3, 4; Sigma Alpha Mu 2, 3, 4; Gospel Quarter 3; Girls Chorus 4; String Quartet and Ensemble 1.



**Perry Lee Martin**  
B.S.

Waterloo, Indiana

Majors: Mathematics, Physical Education, Biology

Basketball 1, 2; Baseball 1, 2, 3, 4; Track 1; "C" Association 1, 2, 3, 4; Intramurals 1, 2, 3, 4.



# SENIORS

**Harry William Mattingly**  
A.B.

Indianapolis, Indiana  
Major: Religion  
Central Ministerial Association 2, 3, 4.

**Norman Burton Meier**  
B.S.

Vincennes, Indiana  
Majors: Physics, Mathematics  
Philomusea 1, 2, 3, President 4; Intramurals 1, 2, 3, 4; Science Club 2, 3; Track 1, 2, 3, 4; "C" Association 3, 4; Oracle Staff 3.



**Lester Donald Moore**  
A.B.

Danville, Illinois  
Majors: Mathematics, Business Education  
Choir 1, 2, 3; Male Chorus 3, President 4; Intramurals 1, 2, 3, 4; Zetagathea 2, 3, President 4; Class Vice-President 4; Band 1.

**Mary Ellen Moren**  
B.S. in Education

Washington, Indiana  
Major: Education  
Philalethea 1, 2, 3; Besta Vesta 1, 2, 3; Intramurals 1, 2, 3.



**Doris Catherine Petty**  
A.B.

Indianapolis, Indiana  
Majors: English  
Philalethea 1, 2, 3; Choir 1, 2, 3; Girls' Glee Club President 4; English Club 3, President 4; Band 1, 2; Oracle Staff 3.

**Elizabeth Ruth Rickert**  
A.B.

Winchester, Indiana  
Major: Music  
Philalethea 1, 2, 3, 4; Sigma Alpha Mu 2; Besta Vesta 2; Choir 1; Band 4; Reflector 4; Class Treasurer 4.

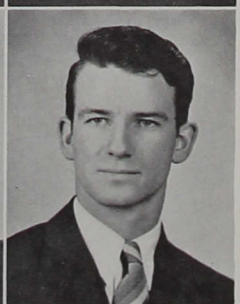


**Mary Eleanor Rider**  
A.B.

Westfield, Illinois  
Majors: English, Physical Education, Home Economics  
Alpha Psi Omega 1, 2, 3, 4; Band 1, 2, 3; Philalethea 1, 2, 3, 4; Booster Club 1; Oracle Staff 3; Reflector 2; Besta Vesta 2; Speech Arts Society 1, 2, 3, 4.

**Donald J. Saylor**  
A.B.

New Albany, Indiana  
Majors: Physical Education, Biology  
Basketball 1, 2, 3, 4; "C" Association Intramurals 1, 2, 3, 4; Baseball 1, 2, 3, 4.



# SENIORS



**Roger Edward Schueler**  
A.B.

Butler, Indiana  
Majors: Music, History  
Band 1, 2, 3, President 4;  
Orchestra 1; Intramurals 1,  
2, 3, 4.



**Ruth Hook Smith**  
A.B.

Westport, Indiana  
Majors: English, Music  
Choir 1, 2, 3, 4; Glee  
Club 4; Theocallosia 3;  
English Club 3, 4; Sigma  
Alpha Mu 2, 3, 4.



**Irving Craig Uncapher**  
A.B.

Lafayette, Indiana  
Majors: History  
Philomusea 1, 2, Presi-  
dent 3, 4; Male Chorus 1, 2,  
3, 4; Reflector 1, 2, 3; Edi-  
tor 4; Choir 1, 2, 3; Sigma  
Alpha Mu 2, 3; Y.M.C.A.  
Cabinet 2; Oracle Staff 3;  
Science Club 2, 3; Quartet  
3; Greyhound Staff 2, 3;  
Dormitory President 4.



**Wayne K. Walter**  
A.B.

Logansport, Indiana  
Majors: History, Latin  
Philomusea 1, 2, 3, Presi-  
dent 4; Latin Club 1, 2, 3,  
4; Dramatics 3; English  
Club 4; French Club 1;  
Booster Club 4.



**Rosa Marie Wegner**  
A.B.

Brazil, Indiana  
Majors: Latin, History  
Latin Club 1, 2, 3, 4.



**Jack Charles Wells**  
B.S.

Morocco, Indiana  
Majors: Chemistry  
Band 1; Track 3; Philo-  
musea 1, 2, 3, 4.



**Marie Pauline White**  
A.B.

Indianapolis, Indiana  
Majors: Home Economics,  
History



**Lena Jane Wiley**  
B.S. in Education

Shelbyville, Indiana  
Major: Education  
Orchestra 1; Philalethea  
4; Alpha Psi Omega 3, 4;  
Student Christian Associa-  
tion Council 3; Reflector 4;  
Booster Club 4.



# SENIORS

## Mary Ann Winebrenner

A.B.

Huntington, Indiana

Major: Music

Booster Club 1; Theacallosia 1, 2, 3, President 4; Choir 1, 2, President 3; Band 1, 2, 3, 4; Greyhound Staff 2; Sigma Alpha Mu 2, 3; English Club 4.



## NOT PICTURED

## Margaret Ruth Howard

A.B.

Hartford City, Indiana

Majors: English, Music

Student Volunteers Cabinet 3; Philalethea 1, 2, 3, 4; Oracle 3; Y.W.C.A. Cabinet 2, 3; Quarter 3; Reflector 1, 2, 3, 4.

## Lawrence Earl Oliver

A.B.

Alexandria, Indiana

Major: Philosophy

## Alice Charline Woodson

A.B.

Richmond, Indiana

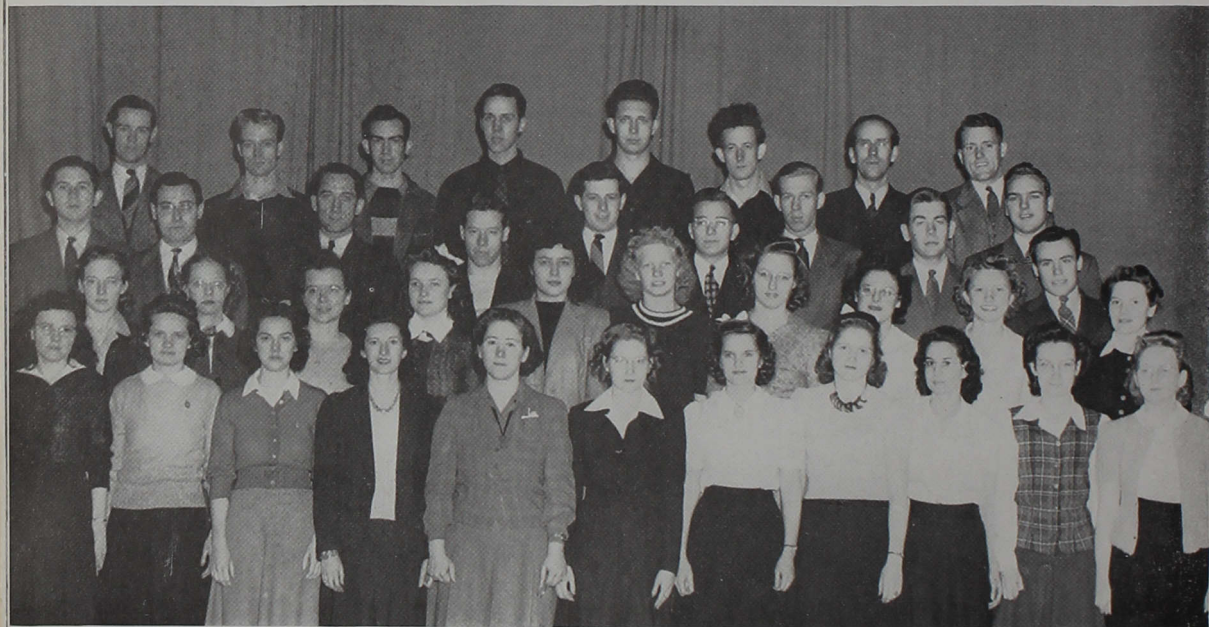
Majors: English, History

Another class joins the growing ranks of alumni of Indiana Central College. As we pause to reflect, of course we think of the many reasons why we will miss them next year. Their varied talents have made them leaders in the many phases of campus life.

It is to be expected that we shall miss their leadership and presence among us. But more than that, we will miss them in daily fellowship in the halls, classrooms, along the walks, in the dorms, in the Club, or at our work. We will try to fill their places of leadership with our own talent, but their place in our hearts will remain.

We pay tribute to others of their number who have been called to their country's service. May God grant that they may return to us soon.

# THE JUNIOR CLASS



FIRST ROW: Keeling, J. Mast, M. Chaille, Harrod, Cartwright, V. Matchett, Bland, Alvord, M. Mast, Enders, Mines.

SECOND ROW: Shewmaker, Black, Jones, Martin, Motley, Rosemeyer, Spray, Hamke, Eichhorst, V. Chaille.

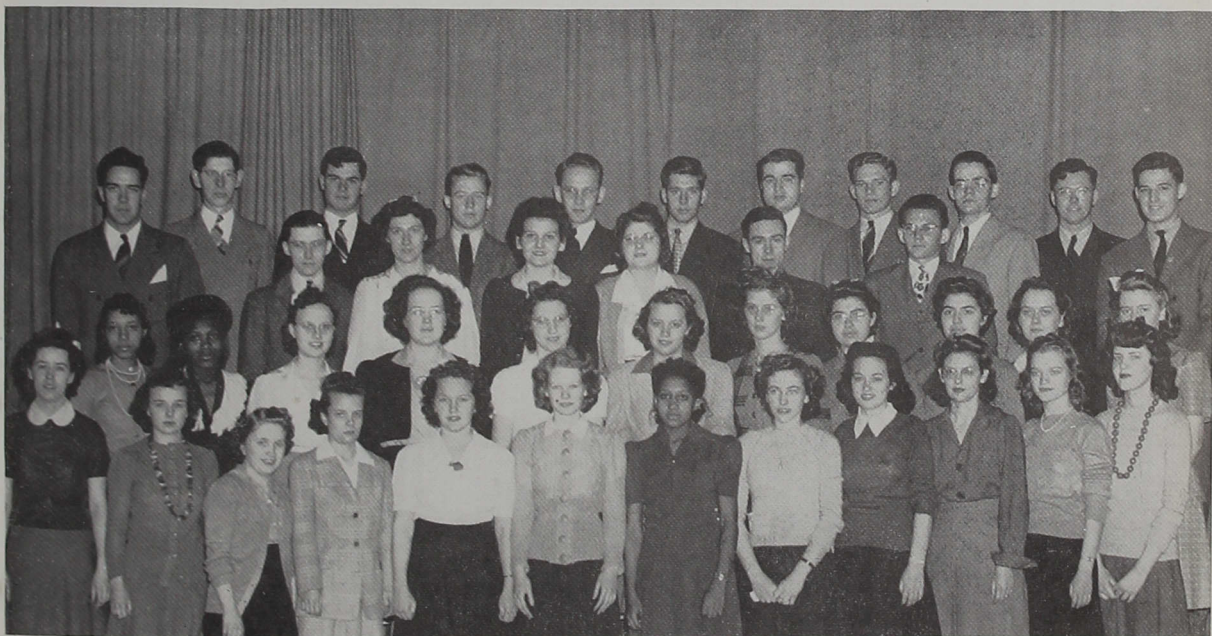
THIRD ROW: Vertrees, W. Pellett, Benedict, Swisher, Owen, Ahner, Chaplin, D. Catlin, Griesemer, Todd.

FOURTH ROW: Noel, L. Sheetz, Longenbaugh, Stricker, F. Fisher, Cavnes, Gordy, D. Miller.

NOT PICTURED: Beecher, Culp, Dilley, Geible, Hoban, Hughes, Kuebler, McClarnon, Ringland, Rothenberger, Simmons, Wilkinson.



# THE SOPHOMORE CLASS



FIRST ROW: Jordan, Olmstead, M. J. Miller, Newman, Watson, Delashmit, Buchanan, Polk, Landis, Snyder, M. J. McKain, Sproat.

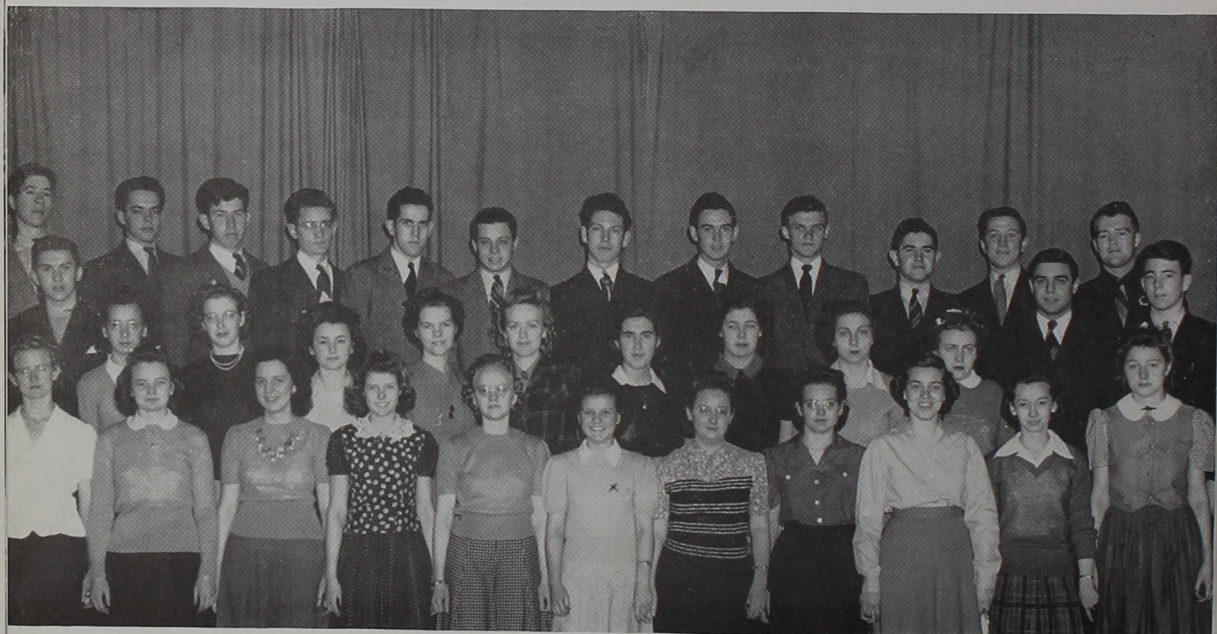
SECOND ROW: McClure, Mitchell, Harner, Deal, Denbo, E. Uncapher, Wertz, Lois Zimmerman, Lulu Zimmerman, Schlarb, Keck.

THIRD ROW: Martinie, F. Allen, Gross, Hægelskamp, K. Foreman, Myers, Hiatt, G. Moore.

FOURTH ROW: White, Harvey, Maddock, G. Catlin, Garner, W. Rider, Kistler, J. Rider, Shepherd.

NOT PICTURED: Anson, Bell, Bowman, Burrows, John, M. Moore, Pennington, Price, Ruffner, M. Smith, Spotts, Steckley, G. Talbot, Tuttle, Vore.

# THE FRESHMAN CLASS



FIRST ROW: Sidebottom, M. Talbot, Reed, V. Miller, Brooks, B. D. Smith, Bond, Hart, L. Chaille, Parr, Langford.  
 SECOND ROW: Mackey, Grubbs, Ringley, George, Brown, Teeter, Baker, B. Fisher, Whited, Billman, Hostetler, Morrett.  
 THIRD ROW: Hamke, Kenoyer, McBride, R. Smith, Brenneman, Lyons, E. Pellett, Yohey, Esmon, Johnson, Mayhugh, R. Sheetz.



# THE FRESHMAN CLASS



FIRST ROW: Mosier, Fulton, Harman, Wiles, Mumaw, M. Moore, J. Martin, Liechty, Truesdale, Goeglein, Rupert.

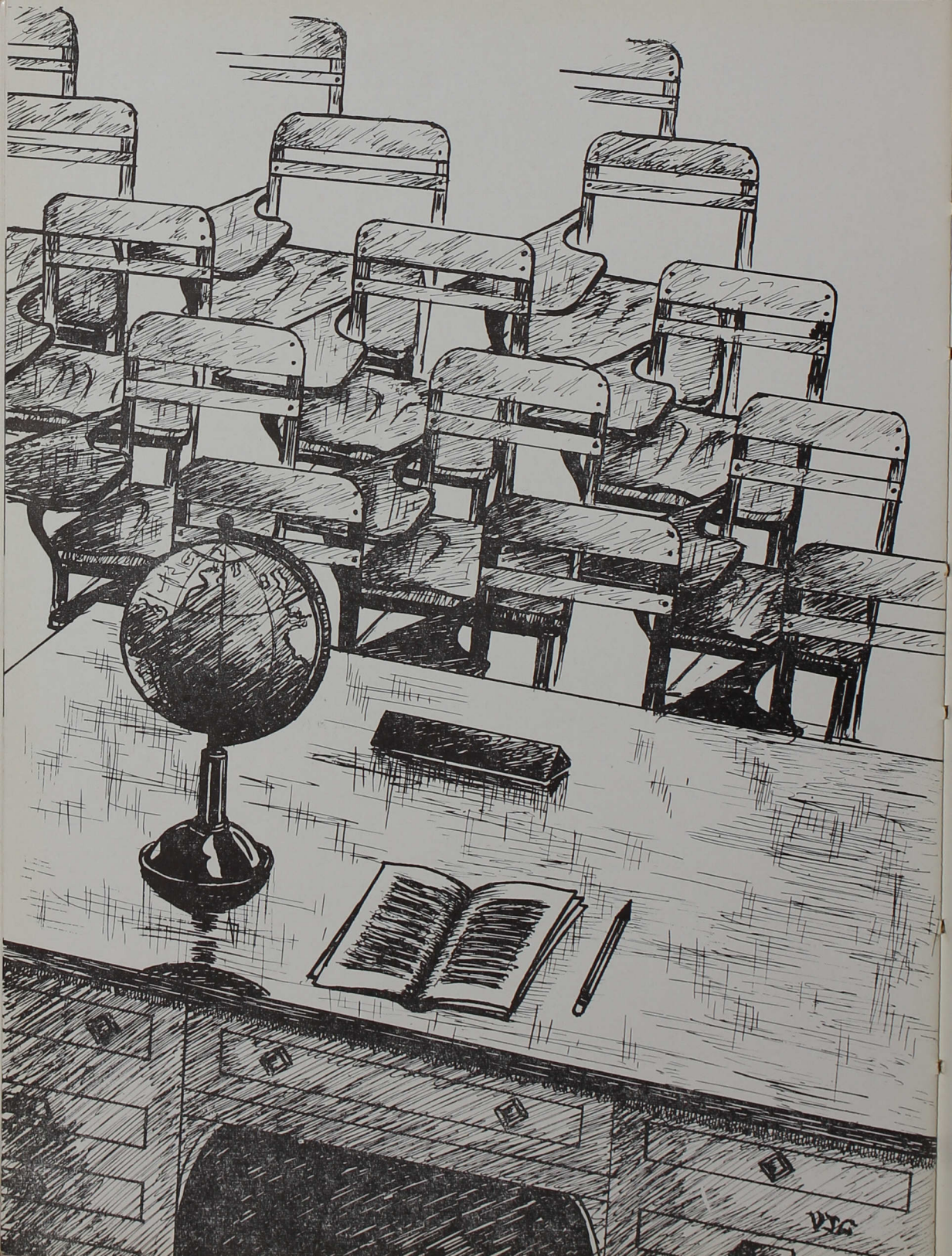
SECOND ROW: Askin, Kitterman, Bryan, D. E. Smith, B. Hockersmith, Rouse, Everly, Dennis, Sholty, Albright, J. E. Miller.

THIRD ROW: Harper, Stone, York, Montgomery.

FOURTH ROW: Windhorst, Dugle, Resler, Kistner, Compton, Mogle, Sachs, Burns, Foreman.

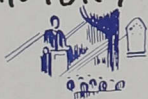
NOT PICTURED: Davis, Gould, Gery, Hardison, Mannix, Monson, Hope, Rowland.







DRAMA AND GRAMMAR, HISTORY AND ART



RELIGION AND LANGUAGE, MATH AND BIOLOGY



EDUCATION AND SCIENCE, EACH IN HIS PART—



THEY'RE UNUSUAL ALL — OUR FACULTY





PRESIDENT I. J. GOOD, A.B., A.M., LL.D.

To the one person who, above all others, has been responsible for Central's continued high idealism. Throughout the twenty-eight years of his presidency, Dr. Good has given unstintingly of his time and energy that our school might receive greater scholastic recognition. The success of our Victory Campaign has been largely due to his unfailing interest and energy. With faith in our President we face the trying days ahead, confident that the "greatest year" is yet to come.



## DEAN CRAVENS

Miss Virginia Cravens has been Dean of Women since coming to Indiana Central in 1927. During these years she has listened considerably to many problems and complaints, always willing to work out a solution. Bits of friendly counsel given both to men and women during quiet chats around the campfire, on the walks between classes, around the tea table, and in her classroom or office have won her a place in our hearts. Indeed, "The Dean's" delightful teas almost obliterate from memory her mahogany desk and "green carpet."



## DEAN STONEBURNER

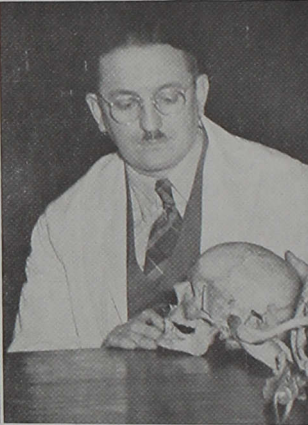
During the years since 1935, when he became Dean of Men, Dr. Stoneburner has gained the appreciation and respect of the men on the campus. His positions as adviser on Selective Service and Air Raid Warden have further increased his already heavy load. At best his job is a rather thankless one. In his contacts with the fellows he has been firm, but kind, demonstrating his understanding of them and their many problems.



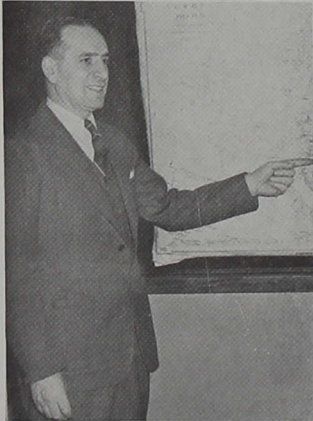
# FACULTY



**Sibyl Weaver, M.A.**  
English



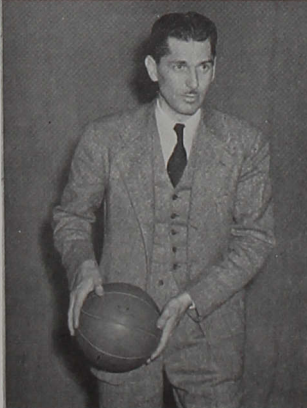
**W. P. Morgan, Ph. D.**  
Biology



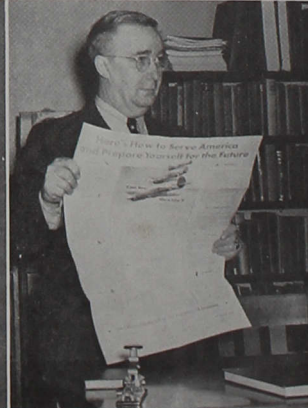
**John J. Haramy, Ph. D.**  
History



**Virginia Cravens, M.A.**  
English, Dean of Women



**Harry C. Good, M.S. in Ed.**  
Physical Education, Athletics



**W. Earl Stoneburner, Ed. D.**  
Education



# FACULTY

**Anna Dale Kek, Ph. D.**  
Latin, Registrar

**Evan R. Kek, M.A.**  
History, Treasurer



**Lois Taylor Fouts, M.S. in Ed.**  
Physical Education, English

**Esther Becker**  
Voice



**Elsie MacGregor, F.A.G.O.**  
Organ

**Roy V. Davis, M.A.**  
Education



# FACULTY



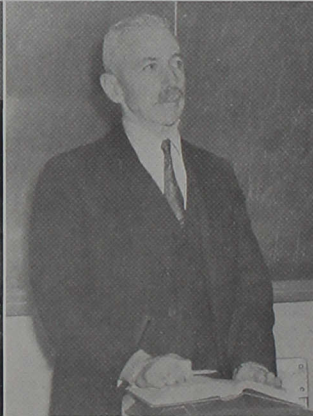
**Mary C. Huey, M.S.**  
Home Economics



**Helen Mowry, M.S. in Ed.**  
Art



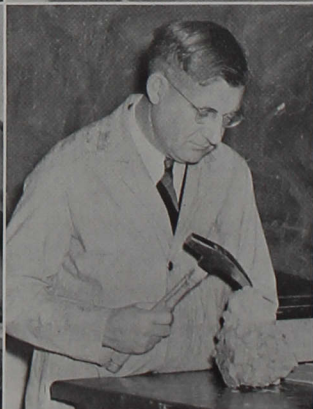
**Eugene Mogle, A.B.**  
Voice, Band



**Richard Wallach, Ph. D.**  
German, French



**Anna Mary Glick, B.M.**  
Piano, Theory



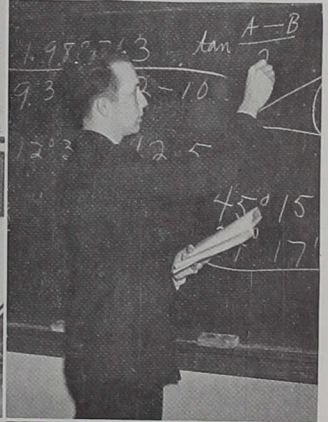
**S. M. McClure, M.S.**  
Chemistry, Geology



# FACULTY

Beckham Martin, M.A.  
Mathematics, Physics

Dwight Smith, M.A.  
History, Mathematics



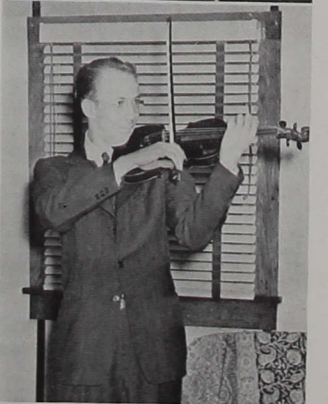
Effie M. Winterrowd, A.B.  
Business Education

Mabel L. Schurman, B.L.S.  
Librarian



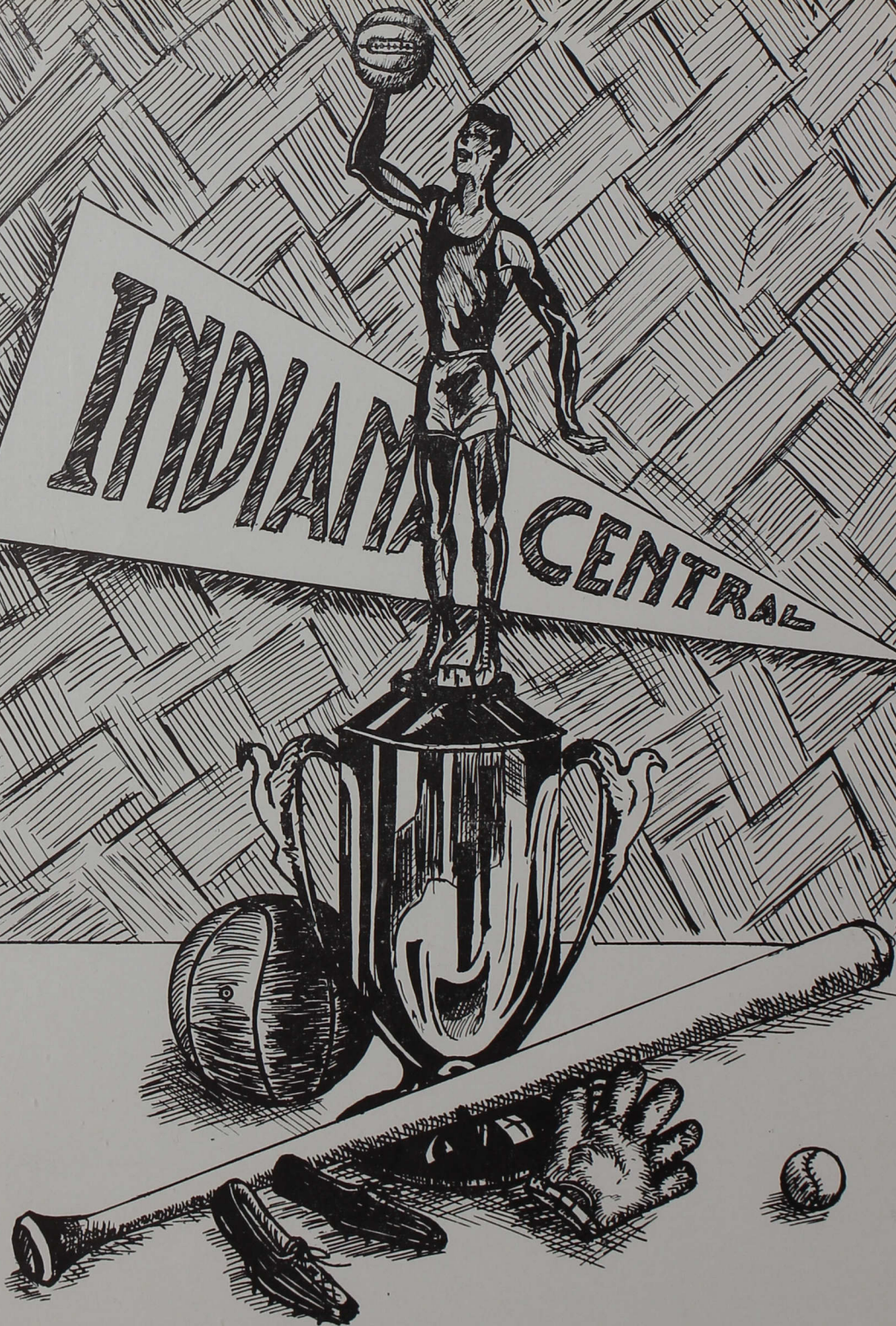
Robert Durham, B.M.  
Music

Kenneth Alyea  
Violin





# INDIAN CENTRAL



V.T.C.



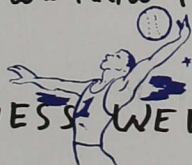


TO ALL OUR TEAMS MUCH HONOR IS DUE

TO CENTRAL THEY'VE BROUGHT GLORIES GREAT



THEIR RECORDS WHICH WE NOW PASS IN REVIEW



PROVE THEIR PROWESS WE DO NOT OVERRATE

# BASKETBALL

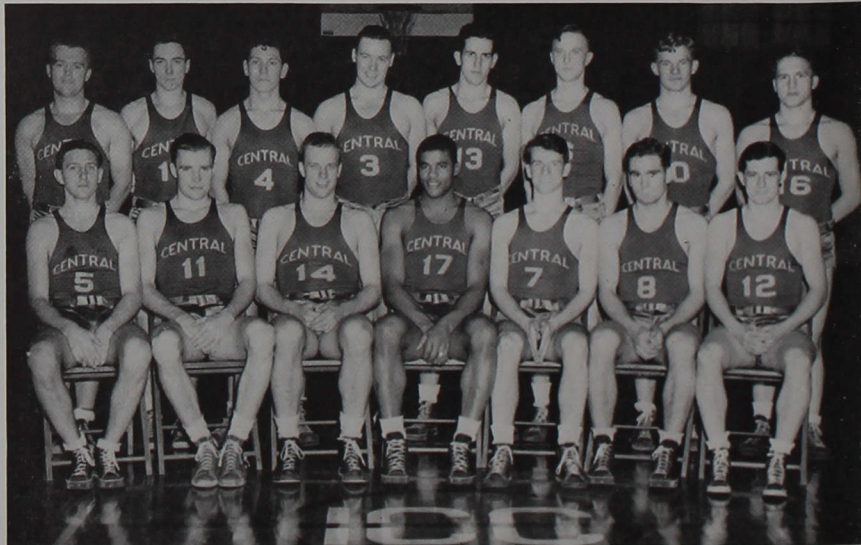


dends. The respect shown the Greyhounds by all opponents is a tribute to Harry's ability as a hardwood mentor.

"Handsome Harry," popular pilot on Central's teams for the past sixteen years, again led the Greyhound Basketballers to a successful season. Under his guidance, Greyhound court squads have compiled an excellent record, and for the past three years have ranked high in national ratings. His knack of unearthing athletes from schools of little renown and building them into top-notch quintets has paid dividends.

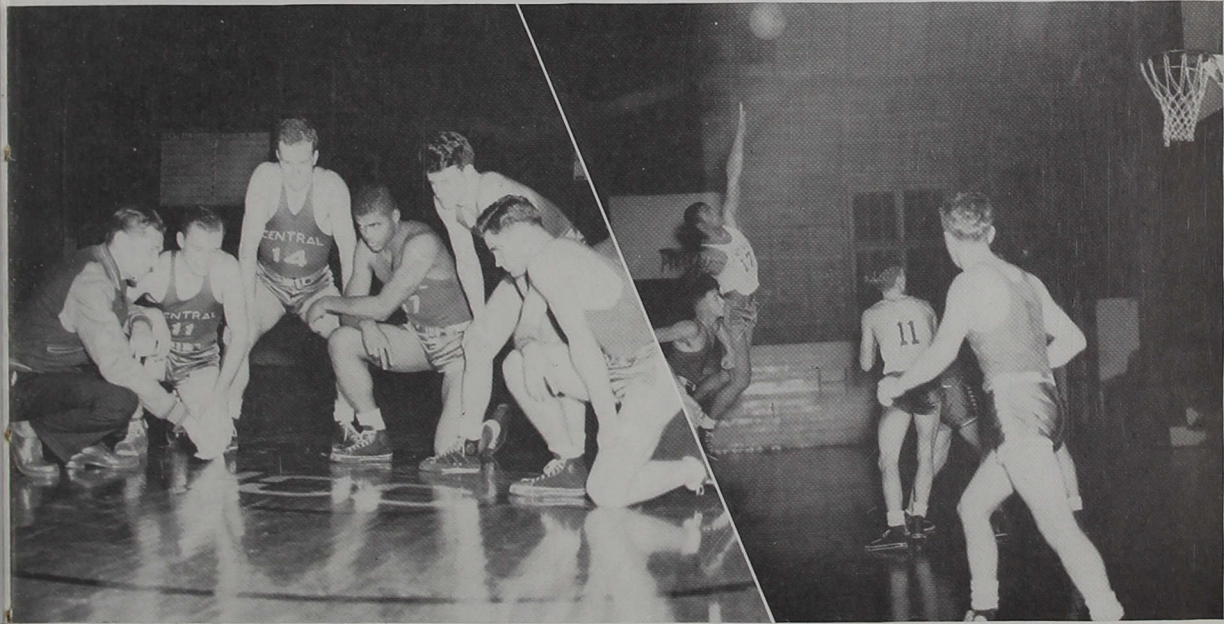
Seated: Saler, Windhorst, Howe, Crowe, Saylor, Bunge, Owen.

Standing: R. Sheetz, Compton, E. Pellett, Dugle, Brenneman, Martin, Kistler, Slavin.





# BASKETBALL



Indiana Central College's Greyhounds started out the season with a two-point win over the Peru Naval Training Base. They continued to win until the momentous game with North Manchester, which was the first game many of us had seen the mighty Greyhounds lose during our stay on the campus. This game, also, ended the winning streak which had been run up to the high point of thirty. Then the Greyhounds dropped three games in a row, but the team finally came back into its own by winning the game from Huntington by a good score. The team continued its winning streak during the rest of the season.

## RECORD

I.C.			
Peru Naval Base	38 _ 36	Huntington	57 _ 49
Huntington	52 _ 48	Ball State	39 _ 37
Hanover	75 _ 48	Central Normal	
Central Normal	56 _ 32	(overtime)	69 _ 60
Manchester	39 _ 40	James Millikin	61 _ 48
Peru Naval Base	33 _ 48	Hanover	81 _ 70
Manchester	44 _ 54		

# BASKETBALL

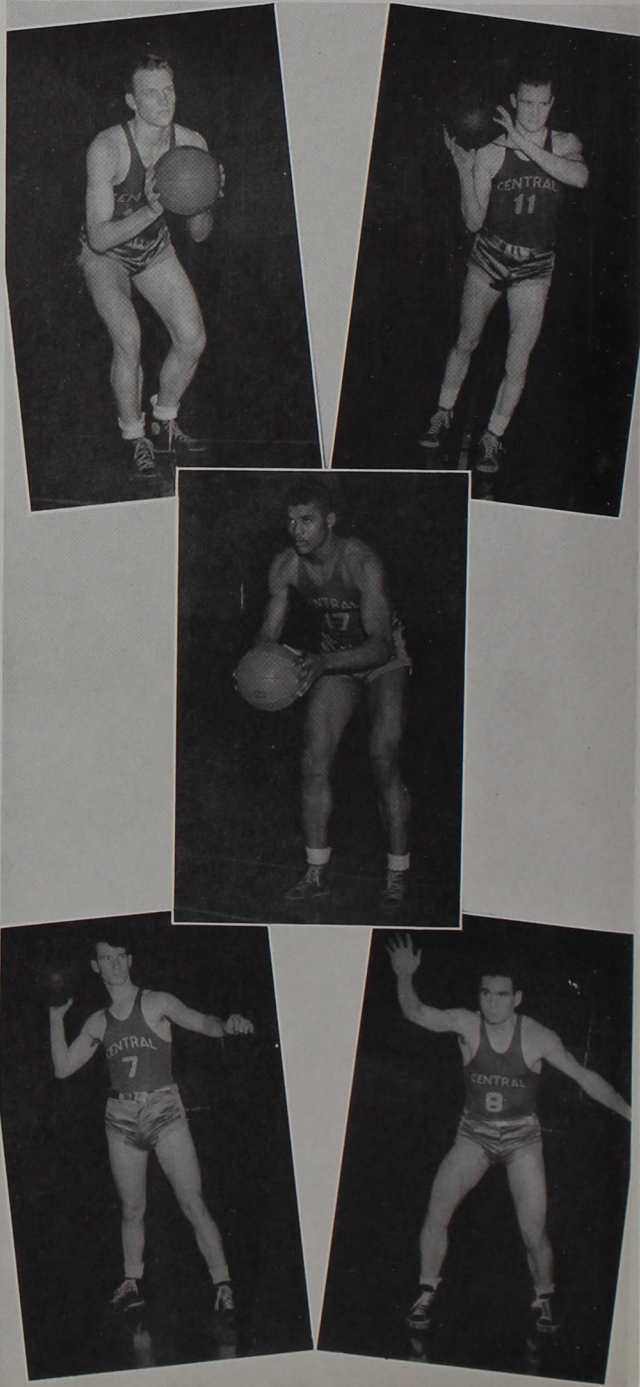
BILL HOWE, known as "Pick" to everyone, has just completed his fourth year as a varsity member. His shooting ability and his fancy passing have kept opponents in a dither. He has also been one of the Greyhound's most consistent point getters.

BOB "WINDY" WINDHORST, the only freshman on the starting lineup, teamed with Howe at forward. His rebound work and scoring ability did much to keep Central in the running. Much is expected of him in the future.

GEORGE CROWE, known to his teammates as "G," has been a mainstay in the lineup for four years. His versatility and coolness under fire, coupled with his leadership qualities have made him an indispensable cog in the Greyhound machine.

DON "MOPE" SAYLOR, a Senior this year, has performed very capably at guard. His habit of producing in the pinch made him a favorite of all who watched him. His long shot artistry saved many games. He, too, played four seasons on the varsity.

DON BUNGE, a hard driving Sophomore guard supplied the spark in Central's attack. He was always in the thick of the battle and in every game he turned in a good performance. It was the team's misfortune that he had to leave school at the end of the first semester to enter the Armed Forces.





# BASEBALL



Central's 1942 Baseball nine captured 8 of 10 decisions to finish well up in the conference standings. Highlight of the season was the brilliant no-hit performance turned in by Perry Martin, right-handed twirler, who blanked the Huntington Horsehiders April 14. Leading the moundsmen in total victories was Bob Noel, sterling right-handed flinger who turned in 5 successes.

Big George Crowe, who guarded the initial sack, led all hitters by wielding the stick at a .400 clip.

## SEASON RECORD

		I.C.C.	Opp.
April 2	At Central Normal	7	5
14	Huntington	9	0
17	Central Normal	3	6
24	Hanover (H.S. Day)	12	3
29	At Taylor	17	5
May 1	At Hanover	13	1
5	Franklin	1	2
8	At Huntington	4	1
12	At Franklin	8	1
16	At Earlham	9	5

# TRACK

The 1942 track and field squad completed its season with only one victory, but showed a fighting spirit throughout. Handicapped by lack of personnel, the team, captained by Jim Miller, competed against such teams as Rose Poly, Ball State, and Indiana State Teachers College. Outstanding performances were consistently turned in by Crowe in the discus and shot; Adams and Miller in the distance runs; and Hiatt in the high jumps.

RECORD					
April 18	Central	86	April 29	Central	26
	Taylor	45		Indiana State	105
April 22	Central	47 1/3	May 2	Central	26
	Wabash	83 2/3		St. Joseph	68½
April 25	Ball State	110		Rose Poly	80½
	Central	27	May 9	Central	50
	Taylor	25		Hanover	81

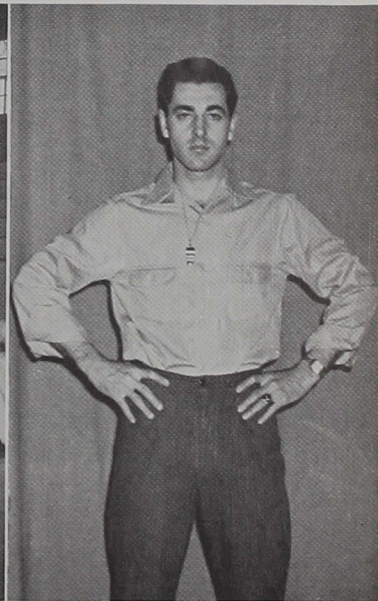
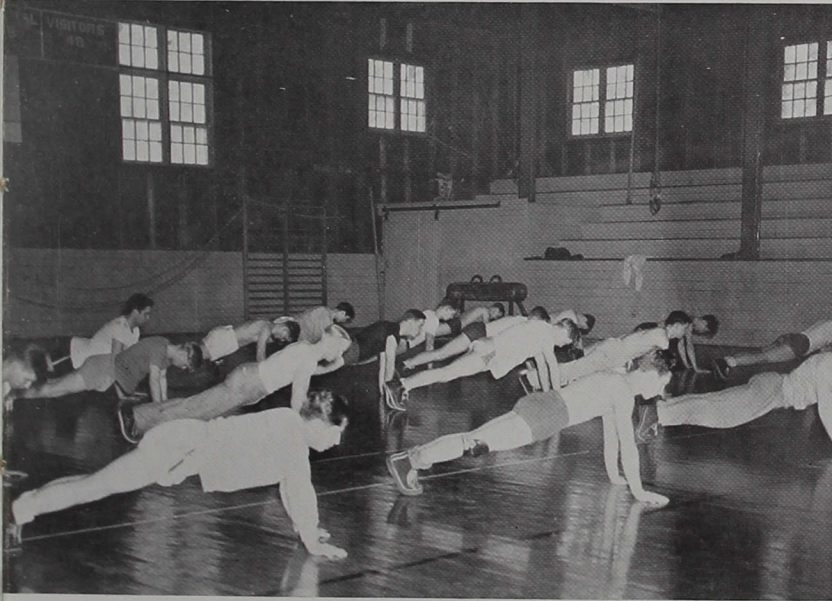


FIRST ROW: Hiatt, Myers, Heyduck, Todd.  
SECOND ROW: Crowe, Bissey, Meier, Adams, J. Miller, J. Rider, Nuckols.

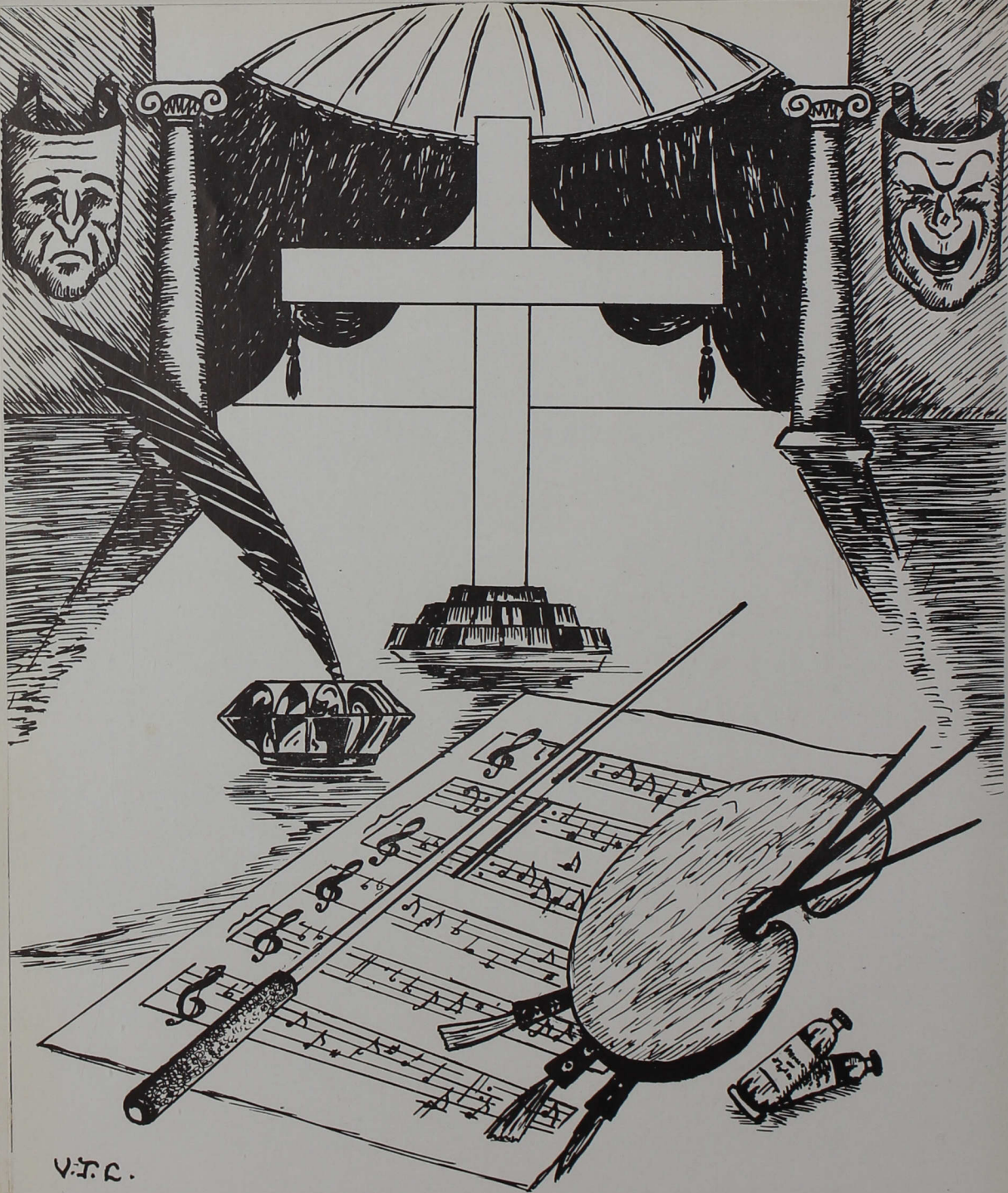
April 18, 1942	
Central	86
Taylor	45



## PHYSICAL FITNESS PROGRAM



The class known as Physical Fitness is a program which the school was required to provide for the men in the Reserve Corps. In the inception of the class, the track saw the feet of many of the people which it would have never seen had not the warriors of Hirohito started the fracas, with the Pearl Harbor incident. When the weather became too cold the class transferred its activities to the gymnasium. The gym became, over a period of time, a place which had, among other things, a suspended ladder which was a very good place for producing blisters on the hands of some of our future officers of Army, Navy, and Marines. In addition to this daily (three times a week) run on the improvised obstacle course there was a period for strenuous calisthenics. Of course, this was followed with a game period which was just for the fellowship! As to injuries, suffered in the attempt to be toughened up for the particular branch of the service which the fellow had chosen to join, there was everything from a torn hangnail to broken bones. But they were all glad to be able to do this little bit for our Country.



V.T.C.



OUR FELLOWSHIPS HERE WE HAVE ENJOYED



THEY'VE GIVEN US PROFIT AND PLEASURE.

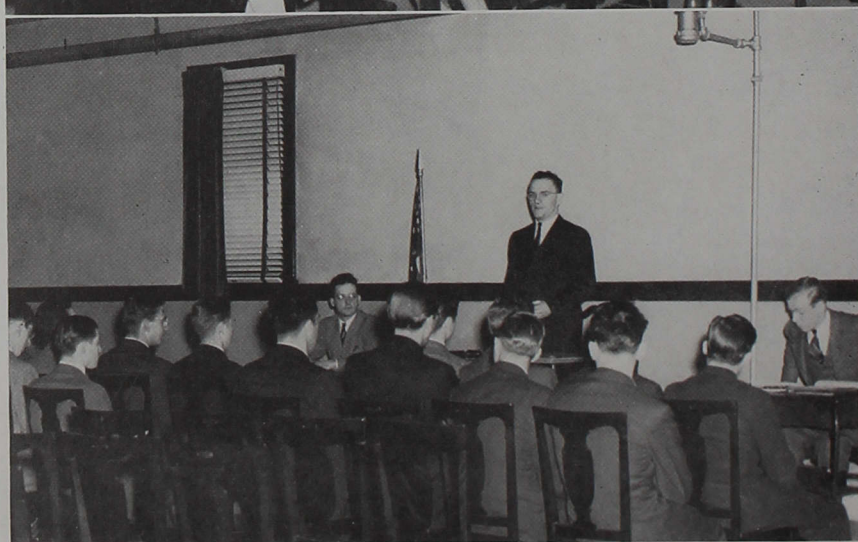


OUR STRENGTH AND WITS HAVE BEEN EMPLOYED



IN DEED WE ALWAYS SHALL TREASURE.







## PHILALETHEAN LITERARY SOCIETY

"In order to develop literary attainments, encourage decorum and debate, and establish a methodical manner of transacting business"—this large society continues.

Realizing that there is no substitute for eloquence and that education in the arts and humanities in nurturing the leaders of the world, Philaletheans of 1943 are especially eager to become good coordinators of opinion, clear thinkers, effective speakers, and writers of polite literature.

O glorious Philalethea,  
Round thee in love we draw.  
Thine is the grace of culture,  
The majesty of law.  
Be self-control thy sceptre,  
Efficiency thy tower;  
And on thy shining forehead,  
Love, Justice, Peace and Power

MEMBERS: Davis, M. Hockersmith, Rickert, Files, M. Rider, Dietz, Gahman, McKesson, V. Chaille, Shewmaker, M. E. Mast, Eichhorst, Harrod, Foreman, Sproat, Grose, Schlarb, Delashmit, Wertz, Morley, Burrows, Jordon, Emmert, Wiley, Deal, Anson, Fisher, B. Hockersmith, Mumaw, Liechty, Everly, Ringley, Askin, Billman, Whited, L. Chaille, Mannix, Sidebottom, Talbott, Reed, Brown, Fulton.

## PHILOMUSEAN LITERARY SOCIETY

"Build today, then, strong and sure,  
With a firm and ample base;  
And ascending and secure  
Shall tomorrow find its place."  
—Longfellow

Until and when the present world catastrophe has written its final bloody chapter, men of Philomusea will be found, as in times past, willing, ready, and capable of assuming posts of leadership in the defense and furtherance of those liberties which are dear to the heart of every American.

MEMBERS: Adams, Walter, Meier, C. Uncapher, McClung, Cottingham, Gorbett, Geible, Longenbaugh, Champlin, Todd, D. Catlin, D. Miller, White, Spotts, Pennington, Allen, Martini, Gordy, Harper, McBride, Benedict.

## ZETAGATHEAN LITERARY SOCIETY

"May we ever keep in memory a place for you."

Zetagathea is proud to make her contribution to a better life among the students on our campus. We are proud of the fact that many of our members are serving and striving to bring a just and righteous cause to the front. We, as Zetagatheans, are happy we can take our places in the great struggle at home—to bring victory for God and our country.

"Dear old Zetagathea, here's to you."

MEMBERS: D. Moore, Steckley, Maddock, Garner, Biggs, W. Rider, E. Moore, J. Rider, Kraft, Kistler, G. Catlin, Vertrees, Hiatt, Kenoyer, Morrett, Kistner, Brennehan, R. Smith, Burns, Compton.

## THEACALLOSIAN LITERARY SOCIETY

"to develop ideals of beauty and truth in the finer arts of life . . ."

With this purpose and the motto "Labor Omnia Vincit" in mind, Theacallosia Literary Society was organized twenty years ago. Some of the aims of the society are to cultivate the ability to use originality in writing, to enable the members to speak with ease before a group, and to teach a practical knowledge of parliamentary law. These are tempered with a good humor and lively spirit traditional of Theacallosia.

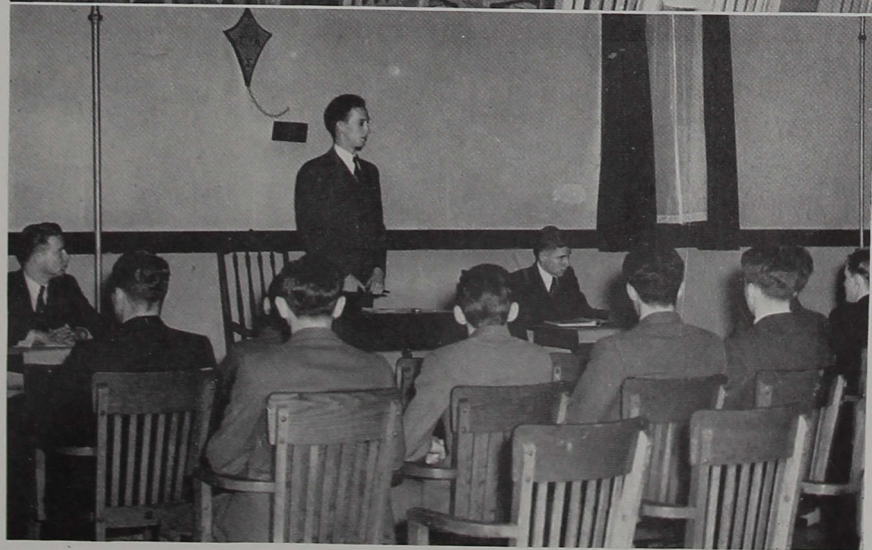
Annual activities enjoyed by the society are the formal initiatory rites, an Alumni tea, and the party for all Freshmen girls. Every member lends a helping hand in all functions of Theacallosia and "gladly repairs when thy loved service calls." Since Theacallosia is sharing her hall with her brother organization, Zetagathea, both emblems now appear over the president's chair.

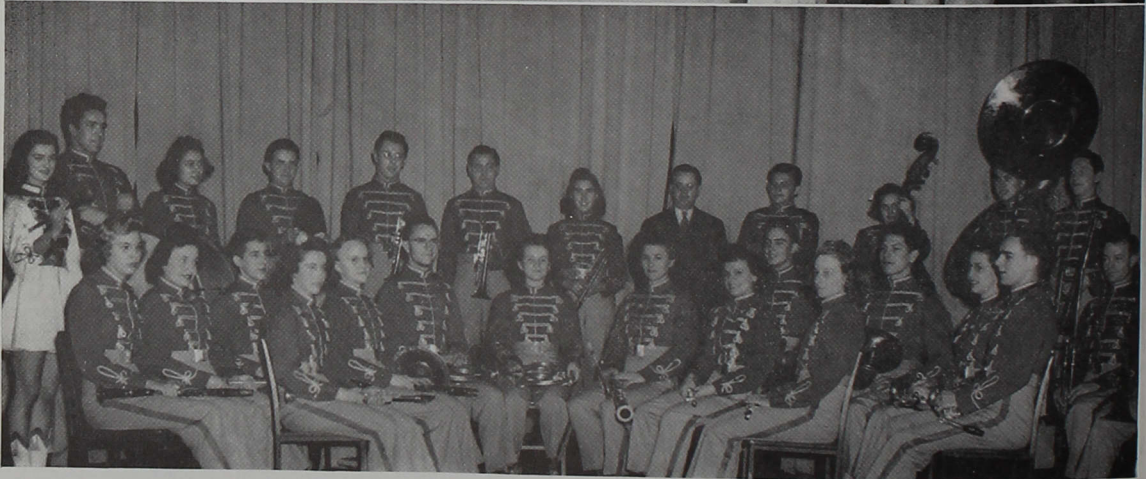
As in the past two decades; so in future years, proudly—

"Our daughters shall sing of thy glorious name,  
Till all earth shall hear of thy spotless fame."

MEMBERS: Alvord, Cartwright, Winebrenner, Mast, Jones, La Favre, Olmstead, Snyder, Watson, Matchett, Ruffner, Denbo, E. Uncapher, J. Miller, Keck, Newman, Harner, Keeling, Polk, McKain, Smith, M. Davis, Truesdale, M. A. Moore, Dennis, Pope, D. Smith.







## SIGMA ALPHA MU

The campus is greatly indebted to Sigma Alpha Mu for many programs and displays designed to increase our appreciation for the fine arts. One of the most impressive displays featured the war posters of the United Nations. The organization is composed of the students and faculty members of the music and art departments.

## BAND

The college band, under the direction of Professor Mogle, has shown considerable improvement in both balance and size this year. The band has given some splendid performances in chapel concerts and outside programs. It also has added greatly to the spirit of all our home basketball contests.



## GIRLS' GLEE CLUB

In balance with the Male Chorus is the Girl's Glee Club with Miss Becker as its director. This group has sung for conferences and dinners on the campus and civic groups of Indianapolis. The Male Chorus and the Glee Club combined their talents to bring Christmas Candlelight Services in the college church and college chapel.

## MALE CHORUS

The Chorus has continued to hold its place as one of the leading organizations on the campus. Under the baton of Professor Mogle, the Chorus has given inspiring sacred and secular performances. The shortage of transportation has hindered the travel of the group this year, but has not diminished its value to the campus.



## ALPHA PSI OMEGA

Under the direction of Professor Anna Dale Kek, the Gamma Theta cast of the national dramatics organization of Alpha Psi Omega has enjoyed an active year. The work in tea time plays and major productions offer opportunities for students to develop acting and producing talents.

The major production this year was under the direction of Mary Rider.

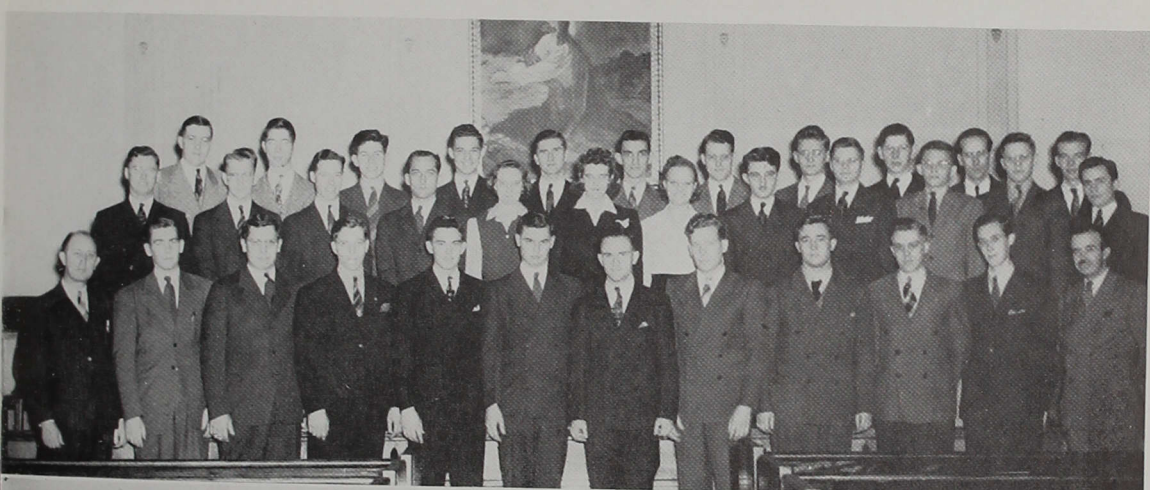
## BESTA VESTA

Besta Vesta is one of the "exclusive" clubs on the campus. Its membership is composed of girls interested in home economics. The club is associated with other colleges through the American Home Economics Association and the Indiana Home Economics Association. The monthly programs have presented speakers on many subjects of interest to the members.

Miss Huey is the sponsor of this organization.







## CENTRAL MINISTERIAL ASSOCIATION

An understanding of a problem to be faced is the first step toward its solution. With this in mind, those students who have dedicated themselves to full-time Christian work have organized the Central Ministerial Association. In the monthly meetings some of the many problems which will face them in the future are discussed.

Professor Davis is the sponsor of the organization.

## STUDENT CHRISTIAN ASSOCIATION

Upon the Student Christian Association Council rests the greatest responsibility of any one group on the campus. Under their direction most of the activities of all phases of campus life are planned and administered. Membership of the Council includes the officers, elected by the students; chairmen of standing committees, chosen by the president; and faculty advisors of these committees. The organization, under the direction of the Council, adopted a constitution this year to provide stability to its activities.



## BOOSTER CLUB

The organization behind the scenes of the "C" Association awards is the Booster Club. Its membership is composed of two members elected each year from each class and the band. Although war shortages have reduced its service at basketball games, the determination of the club to serve the student body, the team, and our school continues unabated.

## "C" ASSOCIATION

One of the most coveted privileges on the campus is membership in the "C" Association. Only those "elite" who have won their varsity sports award are eligible for the strenuous initiation and its attendant glories. We are proud that our "C" men still bring honor to our school in the years after their graduation.

FIRST ROW: P. Martin, Saylor, Crowe, Howe.

SECOND ROW: J. Rider, F. Fisher, Meier, Adams, Hiatt.

THIRD ROW: Coach Good, Windhorst, Noel, Hoban.



## ENGLISH CLUB

The English Club has been one of the most active departmental clubs of the campus this year. An important part of the monthly meetings has been the book reviews given by members of the club. Miss Weaver and Miss Cravens are sponsors.

FIRST ROW: McKesson, Miss Weaver, Petty.

SECOND ROW: K. Foreman, Todd, Delashmit, Gahman, Jones, Winebrenner.

THIRD ROW: Dietz, Miss Cravens, Geible, Spray, Walter.

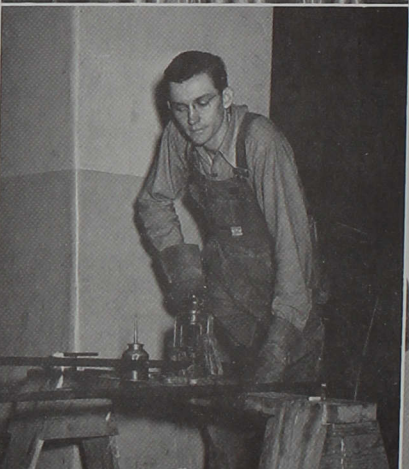
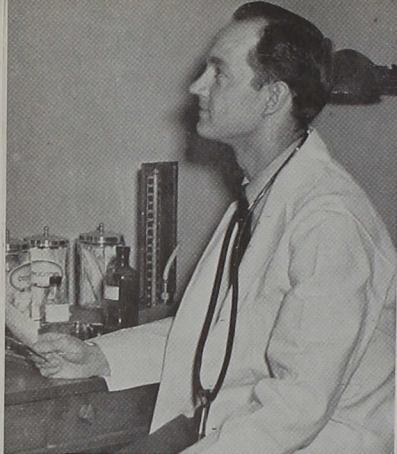
## REFLECTOR STAFF

Dedicated to the proposition that our paper should be "newsy but not nose," the editor, Craig Uncapher, and his staff have done an admirable piece of work this year.

SEATED: Vertrees, C. Uncapher, Rickert, Fulton.

STANDING: Kopp, Teeter, Kenoyer, Delashmit, Motley, M. J. McKain, Sproat, Wiley, McClung, Todd, White, E. Uncapher, Polk.





## PERSONNEL

Dr. J. W. Deever—Physician

Roy H. Turley—Pastor

Helen Mosier—Nurse

F. E. Engle—Manager of dining hall

Birtle Allen—Superintendent of  
Buildings and Grounds

Ida M. Cunningham—House Mother



## ORACLE STAFF



SEATED: Todd, Vertrees, Geible, Bland, Ahner, V. Chaille.

STANDING: Foreman (freshman assistant), Shewmaker, Champlain, Alvord, Motley, D. Catlin, Matchett, Griesemer.

NOT PICTURED: Verdun La Chance (senior assistant), Dwight Ringland.

It has been our endeavor to bring to you scenes from your college year 1943 in an informal way. We hope that in years to come, you will find it an enjoyable pastime to leaf through this issue—recalling the excellent leadership of our faculty, the influence of our organizations, and the good times we had together.

We want to thank “Frenchy” LaChance, our senior assistant, Bob Foreman, our Freshman assistant, and Professor Mogle, our class sponsor, who gave so untiringly of their efforts.

We also wish to express our sincere appreciation to Mr. Noer of the Indianapolis Engraving Company, Mr. Deupree of the Qualityprint Inc, Mr. Cooley of the S. K. Smith Company, and to those who have purchased advertising.

To all the rest who made many sacrifices for our year book, and to you who are reading the book now—Thanks for helping to make the 1943 Oracle a success.

THE ORACLE STAFF  
Roberta Bland,  
Editor.

Compliments of

**JOHN W. DEEVER, M.D.**

1081 Hanna Ave.

GA. 4969

---

Send Flowers

**MADISON AVENUE FLOWER  
SHOP**

AUGUST RIEMAN

**FLOWERS FOR ALL OCCASIONS**

2405 Madison Ave.

GA. 4447

**CLEM C.**

**VOORHIS STUDIO**

---

**Photographs That Please**

---

2327 N. Meridian Street

TA. 6383

Indianapolis, Ind.

**BUY SHOES AT A SHOE STORE**

**MAROTT'S**

**YOUR HOME OWNED SHOE STORE**

**18 E. Washington Street**

**Indianapolis, Indiana**



**STOP!**

**KENNEDY DRUG STORE**

for the "Best" in Fountain Service

**SODAS - SUNDAES - SOFT DRINKS**

4001 Shelby

GA. 0965

---

**Compliments**

**J. C. Perry & Co.**

**F. J. SCHUSTER COAL CO.  
Inc.**

**COAL**

**COKE**

**BUILDING**

**MATERIALS**

824 E. Troy Ave.

C. W. BRAUGHTON

GA. 2431

---

**KARL HIGGINS RESTAURANT**

**Good Food and**

**Complete Fountain Service**

2206 Shelby

GA. 0066

**COMPLIMENTS OF A FRIEND**

Compliments of

**KINGAN & CO.**

Fine Meats Since 1845

---

**THE  
PANTS STORE COMPANY**

Specializing in Men's Trousers

We Furnish Class  
Trousers

46 W. Ohio

Riley 2616

Where Musicians Meet

**GLADYS ALWES MUSIC SHOPPE**

Music for all Instruments

Standard Sheet Music      Octavo Music  
Violin Accessories

33 Monument Circle      Room 201  
RILEY 4292

*Mail Orders Given Prompt Attention*

---

**Slo-Baked**

**WONDER**

**BREAD**

**Now Sliced**

---

## **Adding Machine Service and Sales Corp.**

**ADDING**

**BOOKKEEPING**

**CALCULATING**

**TYPEWRITING**

**MACHINES**

36-38 E. Maryland St.

**L. I. BLAND**

**MA. 2504**



Compliments

**C. A. RICHARDSON**

**Wholesale Candies**

Phone LIncoln 0827 - 445-47 No. Davidson St.

---

**GEO. HITZ and CO.**

**WHOLESALE**

**FRUITS and VEGETABLES**

Indianapolis

---

**CENTRAL PUBLISHING COMPANY**

**INCORPORATED**

**Printers**

**Binders**

**Designers**

**Engravers**

546 South Meridian Street

Indianapolis - - - Indiana



in

**COFFEE and CANNED FOODS**  
**KOTHE-WELLS & BAUER CO.**

---

**Quality Service      Reasonable Prices**

**KELLEY'S BARBER & SHOP**  
**BEAUTY**

**NOTICE OUR NEW ADDRESS**

University Heights

4005 Shelby St.

Phone GA. 1094

---



When you ride the Indianapolis Railways bus to and from the city, you can aid in speeding war-time transportation by following three simple rules:

1. Have the exact fare ready in advance.
2. Move to the rear of the bus.
3. Avoid, if possible, riding during rush hours.

**INDIANAPOLIS RAILWAYS**

