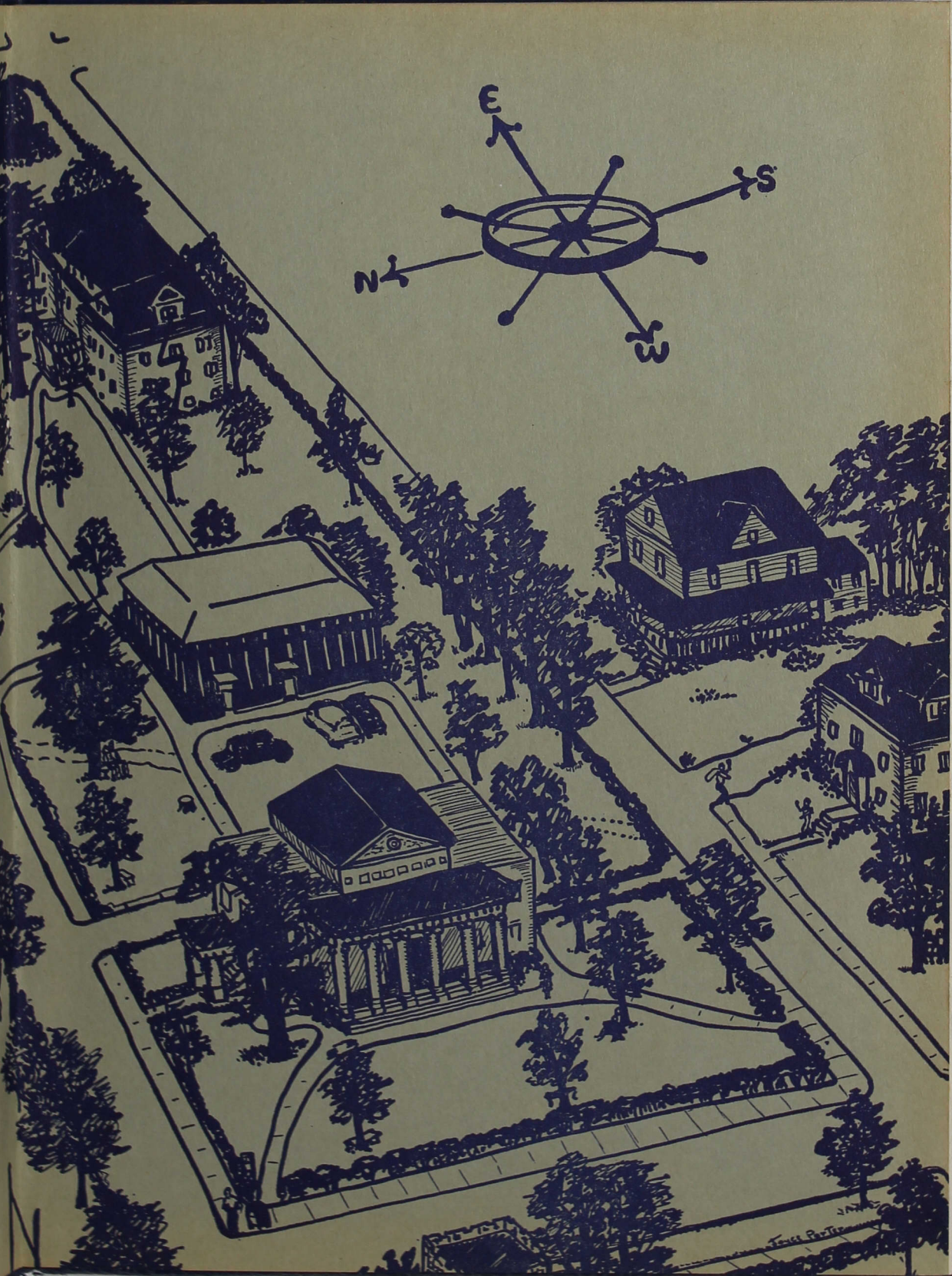
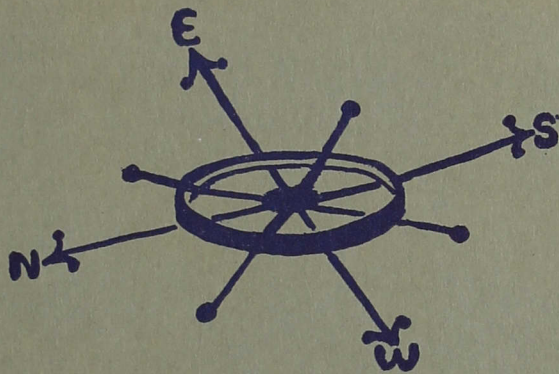




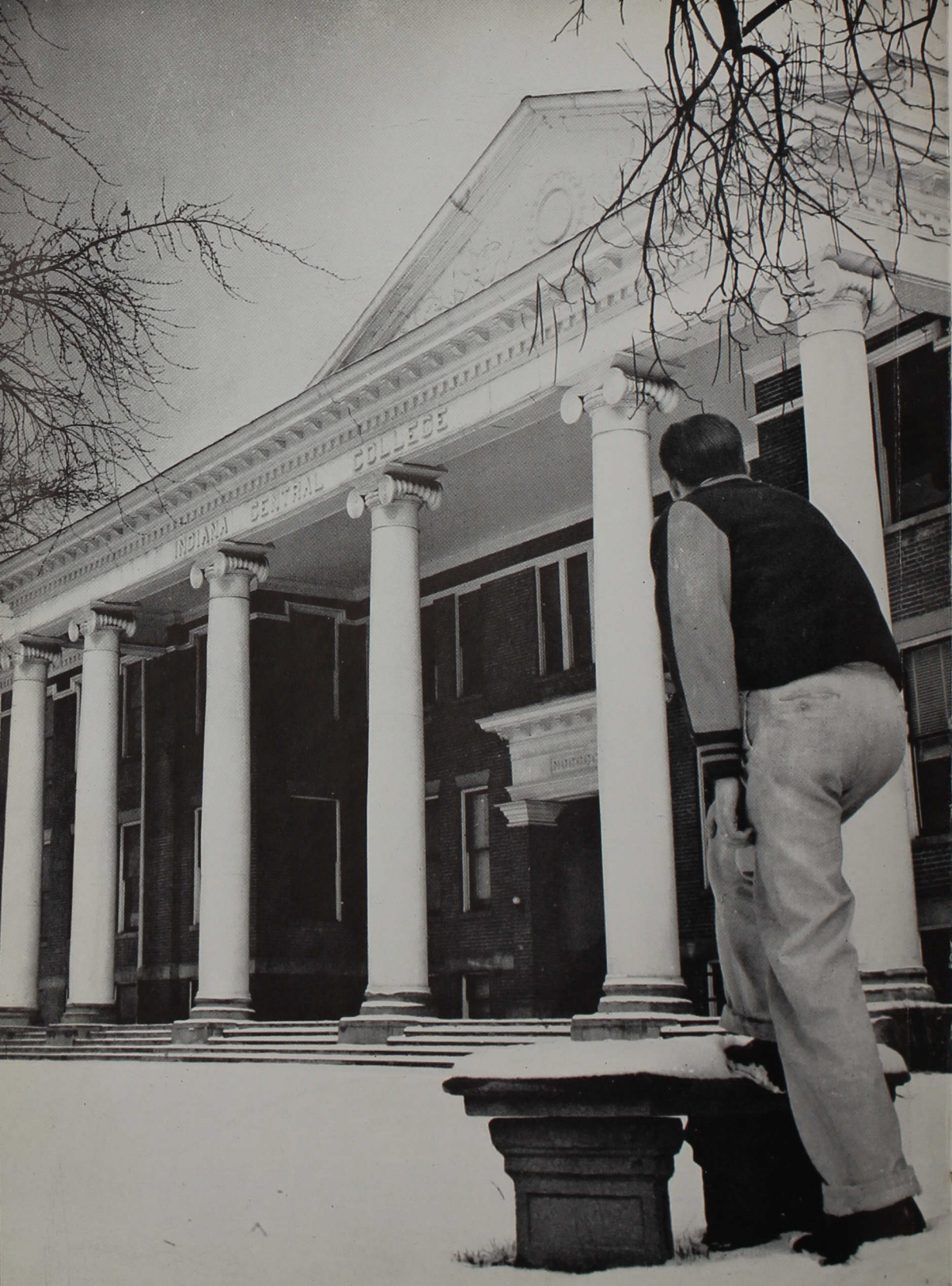
THE 1950

Oracle





Behind These Pillars . . .



We Saw . . .

Centralites at work and at play. We saw them laugh and cry with equal sincerity, win and lose with equal sportsmanship, study and relax with equal satisfaction.

And in quiet moments we saw Centralites pause and pray with humble simplicity.

Behind these pillars we saw youth meet Life and thrill to the ecstasy and challenge of it. We felt the helping hand inconspicuously offered by more seasoned Centralites—administration officers and faculty members—to assist the faltering steps.

Come, turn the pages of the 1950 *Oracle* of Indiana Central College and remember that behind these pillars we saw



DAILEY HALL



MEN'S HALL

WILMORE HALL



BUXTON HALL



Dedication

With sincere pride and appreciation we dedicate the 1950 Oracle to the work of the Student Council in the six years since its initiation in October, 1944, and to the future progress of this instrumental and democratic body.

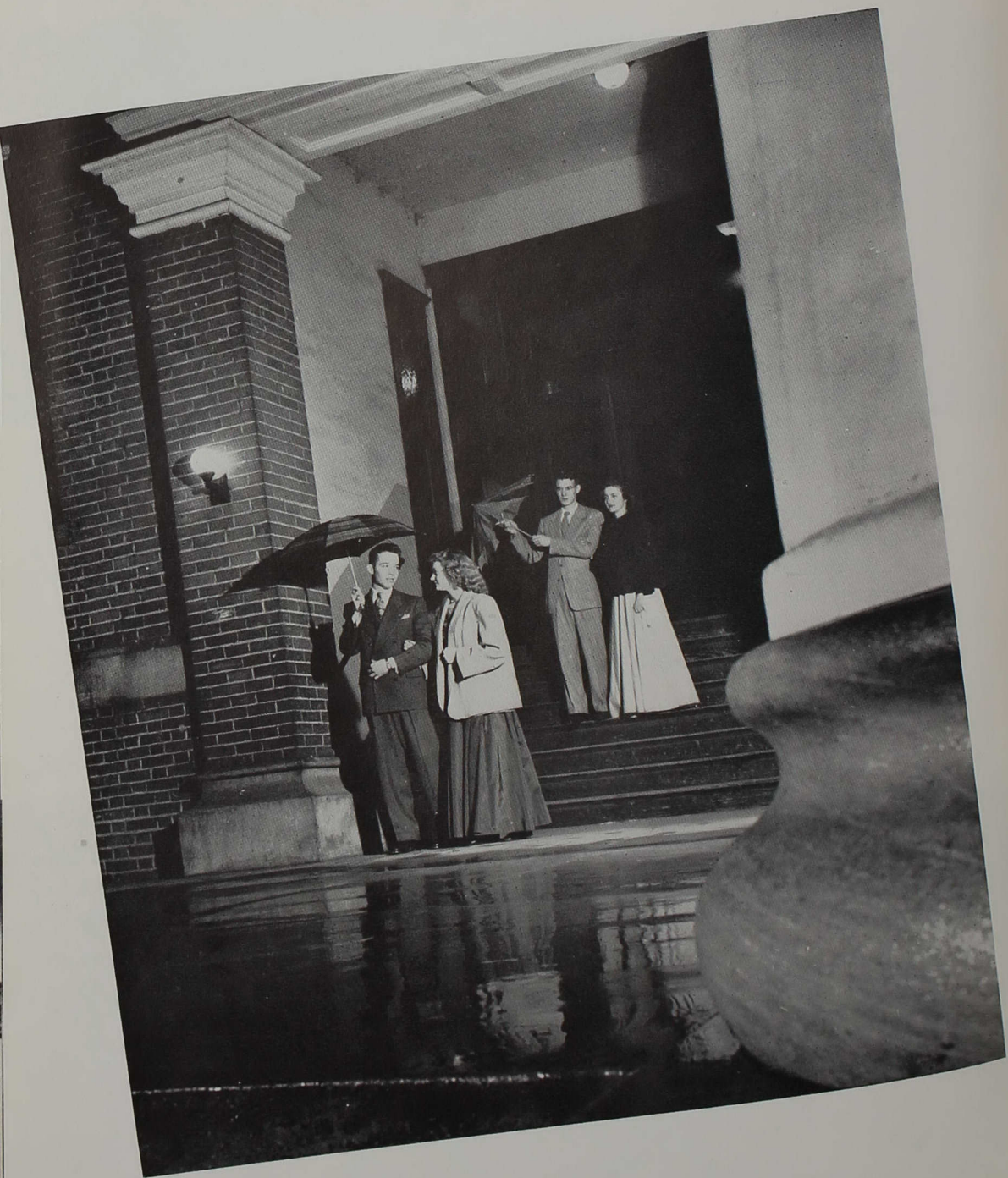
Encouraged by the cooperation of the faculty and administration, particularly by the confidence which President Esch has shown in it, the Student Council has grown into a mature governing body aware of its opportunities and responsibilities.

As the sounding board for all students' griefs, the Student Council acts as effective go-between for the administration and student body.

Some of its actions in the past include: scheduling organization meetings, scheduling of activities, obtaining equal representation on the chapel planning committee, and setting rules for the freshmen initiation. Its present project—the provision for a student recreation lounge — is now under way. May the Student Council and its democratic practices continue to function with the same efficiency and progressiveness it has in the past!



Pictured at left: Election of this year's S. C. president, Albert Thiel, meant a step in the direction of progress in student government for Centralites.



Behind

These

Pillars . .

Activities



BIG MIXER

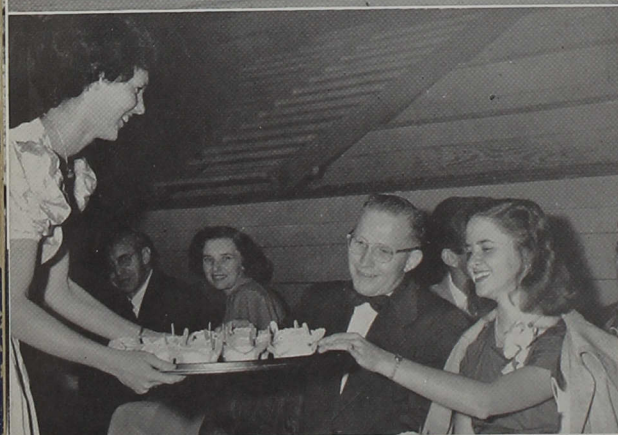
Fall saw the invasion of our campus by 150 strange creatures. Their distinguishing characteristic, green beanies, classified them as "freshmen". The social life of I. C. C. opened with the "Big Mixer" at which a minstrel quartet composed of Marion Wells, Charles Dill, Max Hoffman, and Jim McCoy entertained the group of upperclassmen and freshmen. (above left).

Viola Reifies and Herman Emmert (left) were chosen as typical freshmen and awarded befitting trophies.



TUG O' WAR

Freshman initiation involved the wearing of green beanies and the restraint of certain privileges. Audrey Ogan, Phyllis Albright, Jerry Spitzer, and Joan Dennis (above) willingly bought the beanies which they more willingly relinquished when the freshmen won the Tug-O-War and earned their "emancipation" from the Sophomores.



FORMAL RECEPTION

The reception, at which members of the student body were welcomed on campus by members of the faculty, was the first formal occasion of the school season. John Trinkle and Crystal Belle Livengood were served refreshments by the Shirley Moren.



STUNT NIGHT

The class of '50, the seniors, won a highly contested first place on Stunt Night. Seniors "Chuck" Jennings, Milton Truesdale, and "Dee" Gaylor were some of the "instrumentalists", in the band composed of combs and jews harps.



CAMPUS QUEEN

The Spring Festival of '49 celebrated one of the most impressive events this year, the coronation of the Campus Queen, Barbara Hotz. Last year's queen, Carol Cox, presented Barbara with the crown during the May Festival activities. The queen and her court elected last spring by student vote reign over this year's activities.

Barbara, a blue-eyed blond from Columbus, Indiana, is a music major specializing in voice. She has taken an active part in Theasallosia, the student council, and various music organizations.

Members of the queen's court, an honor given to the other four junior girls who were runners' up in the election, are Alvera Baldwin, Rebecca Sloan, Anna Hite, and Martha Mennen. They attended the queen during the coronation ceremony and during the proceedings of the festival.

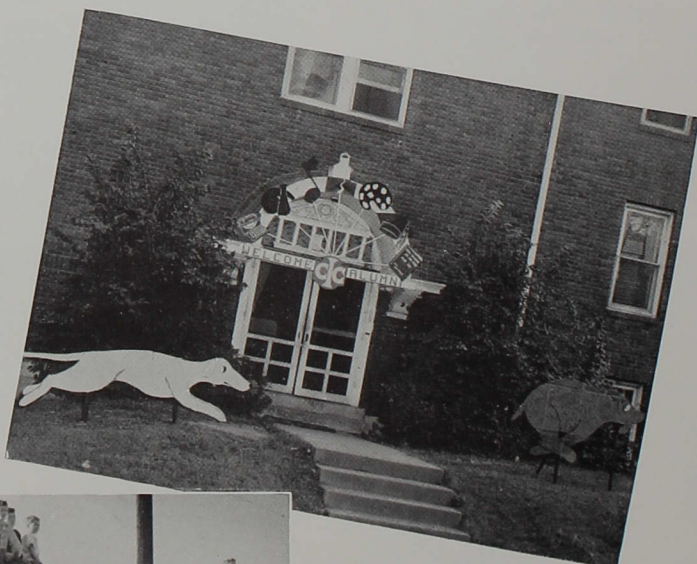




HOMECOMING

The cooperation among the members of and at the same time competition between the organizations made Homecoming a spirited occasion. Each student group entered a float in the parade up Shelby Street to the Circle. The Junior Class float won the contest over the twenty other entries.

The Homecoming Queen, Mary Ray, freshman, was elected to the honor by the football boys. She reigned over the celebrations.



Each year the four dormitories are gaily decorated during Homecoming. This year Buxton Hall with its clever decorations won the contest among the dormitories.

The Homecoming football game, which pitted the Greyhounds against the Franklin Grizzlies, climaxed Homecoming festivities. Spectators (left) were held enthralled while Franklin upset the Greyhounds 14-13.



FALL PLAY

Under the able direction of Professor Hill, Alpha Psi presented the play, "Little Foxes", which climaxed the evening of entertainment begun by the first formal banquet of the year preceeding the Thanksgiving holidays.



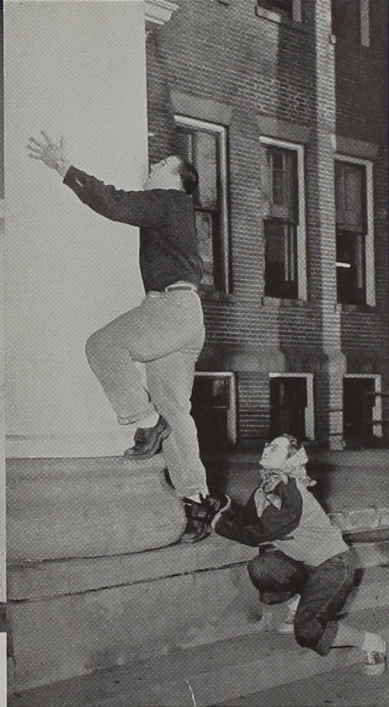
Fall Activities



CHRISTMAS BANQUET

One of the gala dinners of the year was the Christmas Banquet held in the dining hall. Decorations added a festive touch to the celebration. Laveta Smith entertained by playing Christmas carols on her accordian.





LEAP WEEK!

Leap Week began "with a bang" (above) as Harold Schutz gave the starting signal for the wily wimmen to give the gallopin' gents a merry chase and incidentally snare a few of the fortunate (?) ones.

"Gee" Yant's toe hold prevents Tom Barnes from making a successful attempt to scale one of the pillars (left).

SWEETHEART BANQUET!

The Sweetheart Banquet, the largest and most festive occasion of the year, offered an opportunity for the gals to captivate their shy victims. Entertainers of the evening were Trudy Fields, Campus Queen Barbara Hotz, Mary Jordan, Anna Hite, Wayne Smith, Charles Jones, Albert Kindig, and Harold MacPherson.



Pictured at left: Phyllis Stuck, Wayne Cole, Frank Mike, Rose Ann Rider, Mr. and Mrs. Elwood McBride, Joyce Porter, and William Dazey.



ART EXHIBIT

"Mom" Engle (above) served punch at the December art exhibit to art (or punch?) lovers, Ruth Hagelskamp and Eileen Pollard.



OPEN HOUSE

Mens' Hall "blessed event" in February, shiny new furniture, was proudly exhibited by the fortunate fellows during an Open House.

LET'S HAVE A COKE

Drinking a coke in the College Cupboard, many of us mulled over the doings of the day. At right, pictured are "Burly", "Gee" Yant, "Al" Baldwin and Professor Miller.



STUDENT LOUNGE

During spare moments in the winter, we challenged opponents to a game of checkers or chess in the student lounge. At left, Bill Clark "kibitzes" as Bill Dickson and Paul Dodson try to out wit each other.



ONE WE ENJOYED

Ten forty-five till eleven fifteen meant chapel four days a week. Under the direction of Dr. Marple, Albert Kindig, Charles Jones, Frieda Myers, Betty Lou Ratliff, Rose Ann Rider, Rebecca Sloan, Joan Priest, Trudy Fields, and Wayne Smith formed the Madrigal Singers which gave a lively rendition of choral works.

YES, TEACHER?

Practice-teaching kept seventy-four seniors busy this year. Delores Gaylor (upper left) enjoyed the bright answers of some of her pupils.

CLEAN 'EM UP

Clean-Up Day, 1949, proved a laborious "holiday" that was packed with fun in spite of the work. Classes were suspended for the day as students expended energy. At left, Alvera Baldwin, Charles Smith, Bobbye Bettag, Shirley Moren, and Joyce Knight put elbow grease to work on venetian blinds.

SPRING PLAY

The "Importance of Being Earnest", Oscar Wilde's lively and witty farce, delightfully filled a March evening with food for laughs. At left, John Trinkle, Celeste Polter, and Charles Jennings portray a scene from the play.

PUT UP YOUR DUKES

A wrestling and boxing show sponsored by the "C" Association drew quite a crowd of eager spectators. Among the stars of the show were Henry Martinez, Frank Mike, and Fran Wetzel.



WHAT A MESS!

Skip Day gave the juniors a chance to show their appreciation for the seniors and to express their artistic inclinations. Barbara Hotz ruefully surveys the remains of her room.



SENIOR PLAY

May activities are highlighted by the Senior play. Last year's *Our Hearts Were Young and Gay* (upper right), was thoroughly enjoyed by playgoers.



BEAVER DEN

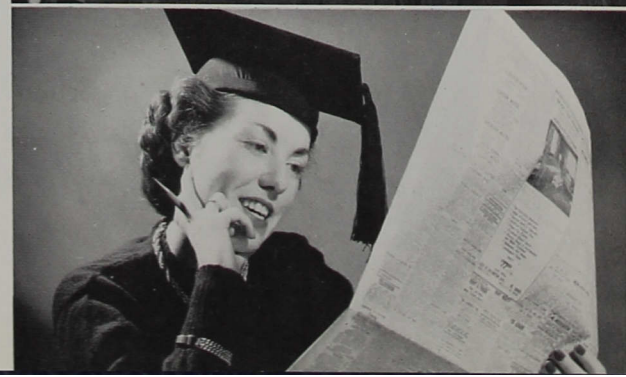
Came those woeful days in May and our dorm rooms underwent a transition from scenes of gab sessions to "beavers" dens. These eager beavers, Jerry Spitzer and Jim Fisher, burn some midnight oil. (Strictly posed).

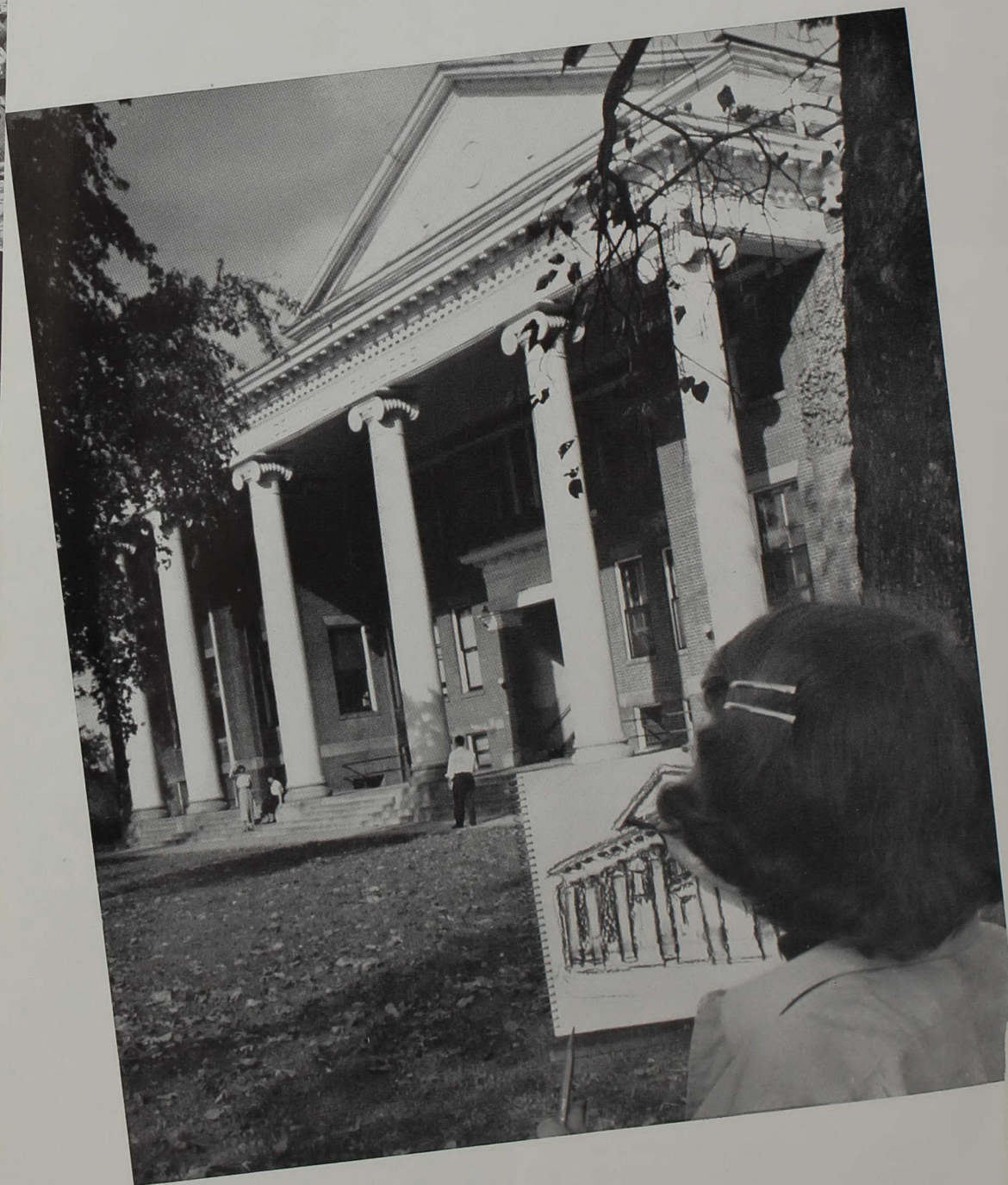


GOODBYE, SENIORS!

Laughs, sweat, and tears—then we are seniors. Commencement—the beginning of a new life and goodbye to the gay and not-so-gay college days, but. . . .

"Hello" to a new life full of new jobs, new opportunities, new acquaintances, and richer as well as fuller living for having been, for a little while, a part of I. C. C.





Behind

These

Pillars . .

Organizations

Art



Assistant Professor William Miller presides in his unique Spanish-flavored fashion over an enthusiastic group of art majors and art lovers who dabble and draw to their hearts content. Through the various courses, individuals are inspired to express their talent in any art forms which appeal to them.

ART CLUB

The Art Club presented two successful exhibits of student work this year. Both were received with evident appreciation and interest by the student body.

This organization, sponsored by Professor Miller, is open to any faculty member or student who wishes to express himself through this medium.

SEATED: Bill Eaton, Jim McCoy, Phillip Hughes; STANDING: William Stelzer, Joe Miles, Professor William Miller, Dwight Taylor, Arthur Winn.



Because of his comprehensive view of music education, Dr. Hugo D. Marple leads band and orchestra in interpreting Bach or Gershwin with equal ease. This versatility is characteristic of the talented, well-trained, dynamic department which he heads with the capable accompaniment of Professors Allan F. Schirmer, Mary Hinton, and Instructors Elsie MacGregor, Louise Hope, and Helen Kellogg.



CHOIR

The Chapel Choir, directed by Professor Schirmer, imparts aesthetic pleasures to students and faculty through its choral presentations. During the school year the choir traveled throughout the state giving concerts in such cities as: Frankfort, Fort Wayne, Rushville, Kokomo, etc. The concert season was climaxed by the annual spring tour of Illinois and Indiana.

SYMPHONETTE

The Symphonette, composed of a small but capable group of players, was organized to furnish a quality instead of a quantity of music for Indiana Central students and the community. The organization gives students an opportunity for developing their talent and expressing themselves through music. The twenty-seven members are "cued-in" by Dr. Marple.

BAND

Mention vim, vigor, vitality, and we know you are speaking of our band! The forty members, under the able baton of Dr. Marple, perform with brilliant tonality whether seated in the concert hall or marching on the gridiron.

FIRST ROW: Edna Mae Farnsley, Lorraine Cummings, Betty Butler, Pauline Strickler, June Vanatta, Barbara Hotz, Professor Schirmer, Maybelle Runk, Vera Thordsen, Crystal Belle Livengood, Betty Lou Ratliff; SECOND ROW: Laveta Smith, Martha Stone, Frieda Myers, Marian Annis, Trudy Fields, Richard Anderson, Charles Jennings, Wayne Smith, Wayne Shipley, Helen Uncapher, Rebecca Sloan, Anna Hite, Hilda Campbell; THIRD ROW: Audrey Ogan, Phyllis Albright, Joanne Dennis, Mary Jordan, Eloise Bilby, Warren Tatter, Ward Vass, Bill Eaton, Richard Keller, Russell Albert, Margaret Ewert, Ruth Sumwalt; FOURTH ROW: Harold Mac Pherson, James Payne, William Bemenderfer, Tom Terrell, Bruce Hilton, James Mansfield, Kenneth Kyre, Albert Kindig, Rollin Tindall, Charles Jones, James McCoy, Richard Smitley, George Spyres.





CENTER: Dr. Marple. FIRST ROW: Trudy Fields, Dorothy Strickler, Dale Robinson, Bob Miller, Patricia Hilficker, Martha Mennen. SECOND ROW: Ruth Campbell, Mary Jordan, Joan Small, Anna Hite, Dave Sanders, Joyce Leichty, Laveta Smith, Ruth Anderson, Frieda Myers, Albert Kindig, Rose Ann Rider, Wayne Shipley, Joan Hilficker. THIRD ROW: June Vannatta, Wayne Smith, Ward Vass, James Kindred, Eloise Bilby, Lloyd Reddix.

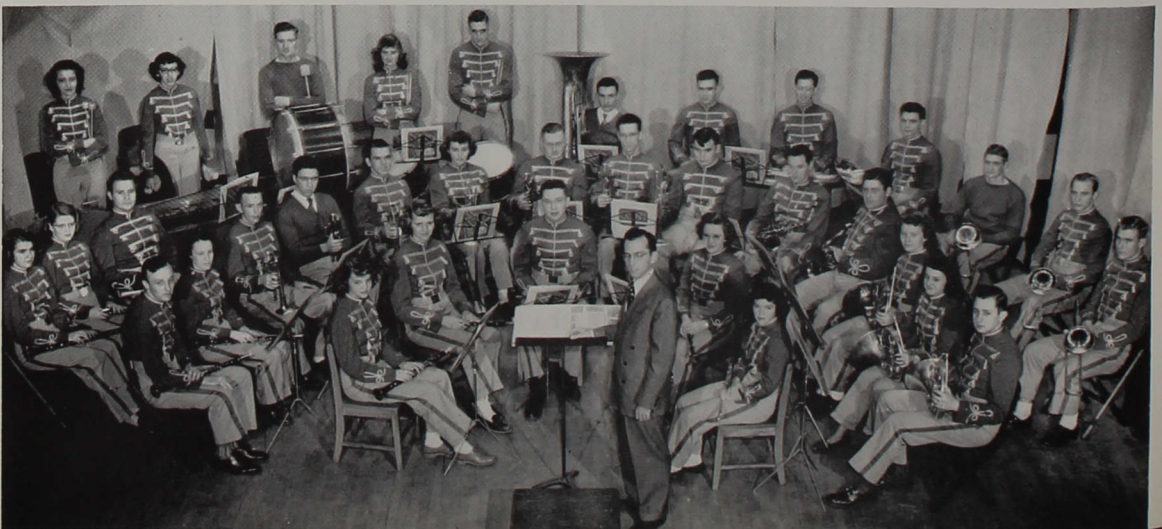


MUSIC CLUB

The Music Club is an organization for music majors and minors. Monthly meetings are devoted to business, professional, and social activities. Most members are affiliated with the national organization, The Music Educators' National Conference. Performances before the group becomes part of the members' professional training.

FIRST ROW, LEFT TO RIGHT: Dr. Marple, Barbara Hotz, Laveta Smith, Rose Ann Rider, Frieda Myers, Jim Kindred; SECOND ROW: Professor Schirmer, Anna Hite, Mary Jordan, Joan Priest, Trudy Fields, Albert Kindig; THIRD ROW: Richard Keller, Wayne Smith, George Spyres, Richard Anderson, William Bemenderfer, Charles Jones.

CENTER: Dr. Marple. FIRST ROW: Marjorie Schrader, Ruth Anderson, Albert Kindig, Laveta Smith, Joyce Leichty. SECOND ROW: Charles Jones, Frieda Myers, James Kindred, William Rogers, Keith Brown, Betty Fleishman, Ward Vass, Richard Houser Moriarty, Kenneth Kyre, Bob Fyffe, June Vannatta, Marlene Aichorn, Wayne Smith. THIRD ROW: Betty Gibbons, Mary Jordan, Don Durant, Charles Bugbee, Richard Hiestand, Dick Anderson, Merlin Featherstone, Howard Turley, George Rosselot, Herman Emmert. STANDING: Anna Hite, Eloise Bilby, Charles Bonecutter, Barbara Hotz, Francis Wetzell.



English



Miss Sibyl Weaver welds the English Department together with her quiet, dry-humored rapture over literature and its structural aspects.

Dr. Allen Kellog, Assistant Professors Harriet Bunting and Elizabeth Hert. Instructors John Hill and Charles Johnson, all aid in the offering of a varied program which develops student proficiency and accuracy in written expression and introduces the significant works of literature.

ENGLISH CLUB

To stimulate greater interest and inspire original creation by students in these areas, the English Club has been formed. A theatre party, Christmas party, book review, and presentation of each year's outstanding student contributions are a few of the highlights of the club's program.

FIRST ROW, LEFT TO RIGHT: Alvera Baldwin, Phyllis Huber, Helen Mays, Emilee Toliver, Pauline Strickler, Helen Moon;
SECOND ROW: Miss Sibyl Weaver, Barbara Hotz, Alice Brooks, June Holt, Thelma Washburn, Rebecca Sloan, Fred Heine;
THIRD ROW: Harry Parkhill, Mildred Myers, Wayne Shipley, Louise Dragoo, Barbara Bettag, Edna Wise, James Mansfield, George Easley.



Languages



Dr. Anna Dale Kek's vigorous quest for accuracy in details and painstaking scholarship sets a rapid pace for her co-workers in the language department. Dr. Allen Kellogg, Assistant Professors Eugene Underwood and Gloria Winslow specialize in the teaching of modern languages whereas Dr. Kek's field is the classical languages.

PAN-LINGUIST CLUB

The Pan Linguists Club furthers the cultural aims of this department through the stimulation of interest in foreign peoples, the participation in social activities which introduce foreign customs, and the broadening of members' perspective toward a world view point. The club provides opportunities for using foreign language in composition and conversation.

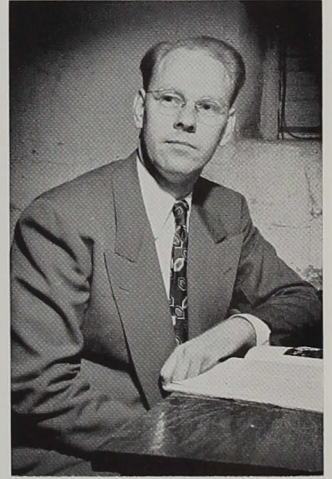
Co-sponsors of the Pan Linguists' Club are Dr. Kek and Assistant Professor Eugene Underwood. Officers are: President, Patricia Hilficker; Vice President, Emilee Ann Toliver; Secretary-Treasurer, Thelma Washburn.

SEATED: Thelma Washburn, Patricia Hilficker, Emilee Toliver, Dr. Kek, Barbara Bettag. STANDING: Dr. Kellogg, Walter Bishop, Eugene Griffith, Arthur Winn, Mr. Underwood, Eloise Bilby, Elaine FitzGerald, Dwight Taylor, Susanna Ruybalid, Professor Miller.



Speech

The speech department, under the direction of its mild-mannered and modestly efficient instructor, John Hill, tries to prepare each student to express himself orally. Since assuming the guidance of this department, Mr. Hill, in cooperation with Alpha Psi Omega, has directed two successful plays—*The Little Foxes* and *The Importance of Being Earnest*.



ALPHA PSI OMEGA

The twentieth anniversary of the founding of the Gamma Theta cast of the national honorary dramatic fraternity, Alpha Psi Omega, was March 10. Members are elected to the organization in recognition of their participation in college dramatics, acting, and stagecraft during an apprenticeship period.

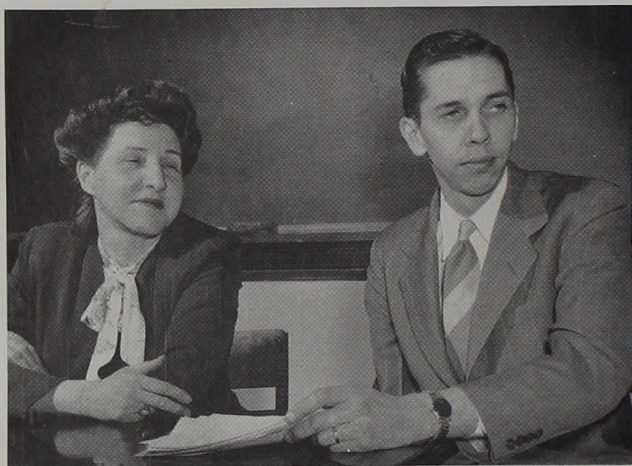
In addition to producing the two major productions, several one-act plays and skits, Alpha Psi celebrated its anniversary with appropriate festivities.

The officers are: Cast Director, Eugene Griffith; Tea-Time Play Director, Alvera Baldwin; Secretary-Treasurer, Louise Dragoo; Sponsor, Professor John E. Hill.

Professor Hill, Alvera Baldwin, Louise Dragoo, Eugene Griffith, John Trinkle, Jacqueline Duffey, Joyce Porter, Charles Noblitt, Donald Dow, Lawrence George.



Business



Assistant Professors Leo Miller and Margaret Emberger combine their efforts to help students prepare themselves to take their places in the business world either as business executives, secretaries, or teachers.

BUSINESS CLUB

The Business Club was organized to develop leadership and efficiency among its members, acquaint them with modern business problems, and establish closer cooperation between Indianapolis business leaders and the Department of Business Administration of Indiana Central College.

Activities of the club included special movies and speeches by business men. The group assisted with the commercial scholarship contest held on our campus on April 1.

SEATED: Gerald Schroder, Jacqueline Duffey, Doris Brooks, Fred John, Carl Smith, Renaldo Savenelli, Genevieve Yant. STANDING: Bob Harvey, Fern Kincaide, Betty Sackmire, Don Ray, Russell Coats, Joe Miles, Dave Shaw, Professor Miller, John Trinkle, Betty Jo Smyser, Jim Fisher.



Education



Dr. Russel S. Merkel and Professor Roy V. Davis share a great responsibility in the instruction and replacement of student teachers. Through its course offerings this department strives to develop in future teachers an appreciation of teaching problems and a philosophy worthy of those who guide youth.

F. T. A.

The I. J. Good Chapter of the Future Teachers of America, sponsored by Dr. Merkel and Professor Davis, is affiliated with the National Education Association and Indiana State Teachers Association. It provides its members with information about the profession and practical hints from actual experience which will be helpful to prospective teachers. Two chapters of the F. T. A.—Southport and Decatur Central—are sponsored by our campus chapter.

FIRST ROW: Loren Hoch, Celeste Polter, Dorothy Strickler, Ruth Campbell, Delores Gaylor, Clayton Kincaide. SECOND ROW: Alvera Baldwin, Fern Kincaide, Rose Ann Rider, Martha Mennen, Elizabeth Rider, Barbara Hotz, Betty Butler, Ruth Clausius, Emilee Toliver, Helen Moon. THIRD ROW: Marion Wells, Bill Dazey, Joyce Porter, Louise Drago, Anna Hite, Mary Jordan, Barbara Bettag, Gertrude Beasley, Helen Mays, Dr. Merkel. FOURTH ROW: John Trinkle, Joe Miles, Bob Miller, Albert Kindig, Fred Heine, Jesse Hilgert, Harry Parkhill, Edna Wise, Jim Fisher, Betty Kam. FIFTH ROW: Gerald Schroder, Bill Stelzer, Dwight Taylor, Max Hoffman, Virgil Hanson, Fred John, Wayne Fansler, Charles Stotts, Jim Kindred.



Home Economics



Petite Professor Mary Huey endeavors to instill in her home economics students the attitudes and skills which will help them in achieving pleasant wholesome home lives. Many majors and minors also apply their training to teaching, dietetics, or allied professions.

VESTA CLUB

Vesta Club offers members an opportunity to assume responsibilities, exercise leadership, gain competence, and develop poise through practical activities. Social events include a formal initiation dinner, a Christmas candy making party, and a public spring fashion show. Members serve at various banquets and dinners, sell greeting cards and gift wrappings, and send Christmas candy recipes to each student for his fun and good eating.

Vesta Club participates in state and national organizations—State Home Economics Luncheon, District Home Economics Workshop, and National Fund for bringing of foreign home economics students to the United States.

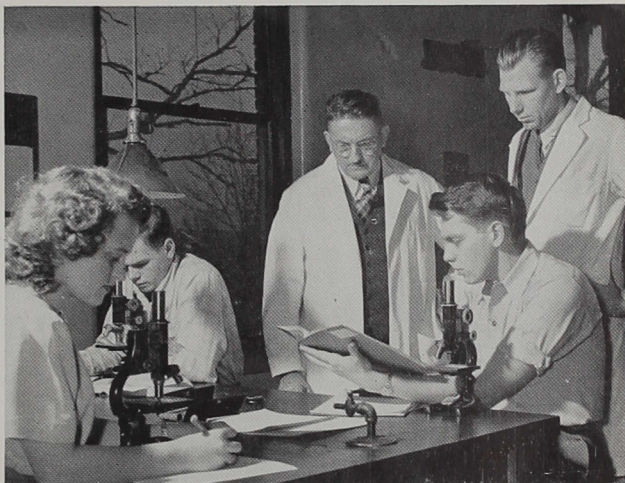
Officers are: President, Gertrude Beasley; Vice President, Louise Dragoo; Sponsor, Miss Huey.

SEATED: Mary Echols, Shirley Thomas, Phyllis Albright, Gertrude Beasley, STANDING: Miss Huey, Louise Dragoo, and Joan Dinkel.



Science and Mathematics

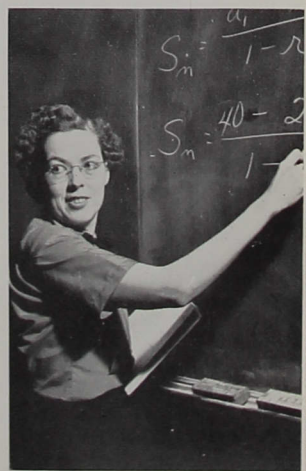
Dr. William P. Morgan's exacting thoroughness and intense search for facts label him a true scientist. Working with him in the science and mathematics division are Professor Kent, botany; Dr. Means, chemistry; Mr. Reddix, physics; and Miss Gates, mathematics.



SIGMA ZETA

Reactivated this year was the Rho Chapter of Sigma Zeta, a society for those interested in science and who maintain a high scholarship index.

Members include: Dr. Morgan, Dr. Stoneburner, Miss Mary Huey, Miss Virginia Cravens, Professor Kent, Mr. Reddix, Patricia Hilficker, Richard Boling, Charles Dill, Paul Eicher, David Elliot, Stanley Klos, Weldon Kincaide, Loren Hoch, Max Hoffman, and Henry Martinez.





Religion and Philosophy

Under the industry and intellectuality of Professor James Weber and Associate Professor Robert Cramer, the Department of Religion and Philosophy seeks to develop and further the spiritual experience of Central Students.

C. M. A.

Professor Weber and Mr. Cravens inspire the Central Ministerial Association which is composed of those students who are planning to enter the Christian ministry. The members participate in worship services at Wheeler Mission and provide one chapel each month.

G. M. G.

Packing boxes of books to send abroad, and sponsoring a drive for toys, food, and money for the underprivileged are significant services the Girl's Mission Guild seeks to extend to people beyond the borders of Central's campus.

FRONT ROW: Lionel Gouty, J. C. White, Harry Parkhill, Charles Peckham, Bob Fyffe. SECOND ROW: Leland Brett, Kenneth Kyre, Bruce Porter, Richard Smitley, Paul Davis, Tom Terrell. THIRD ROW: Lynn Jenkins, Charles Morris, Payne, Jim McCoy, Jay Taylor. FOURTH ROW: Professor Weber, Richard Keller, Herman Emmert, George Easley, Floyd Mevis. SEATED: Maybelle Runk, Thelma Washburn, Verda Spangler, Mrs. Engle, Ruth Clausius. STANDING: Helen Moon, Crystal Belle Livengood, Emma Lou Wilson, Pauline Strickler, Virginia Young, Vera Thordsen, Dorothy Strickler, Audrey Ogan, Edna Wise.



Social Studies

The quick-witted and scholarly historian, Dr. Kenneth St. Clair, is chairman of the social studies division. Associate Professor Thomas Hoult in sociology, Assistant Professor Mable Shelquist in history, and Assistant Professor Paul Pielemeier in economics are his cohorts.

Their united efforts are aimed at making students conscious of their responsibilities as world citizens through the integration of the various influences which determine, or, are evidences of our social structure—history, economics, political science, and sociology.



INTERNATIONAL RELATIONS CLUB

The International Relations Club has introduced one of the largest projects on campus. This group, representing—in itself—three or four nationalities, is spear-heading a drive for funds to educate a foreign student on the I. C. C. campus. The Club, supported by the student body, has given twenty pints of blood to a local hospital. Proceeds from this are donated to further the project. This is only one of the several attempts of the club to fulfill its purpose of stimulating and enlightening public opinion upon international relations. Dr. St. Clair is the vigorous sponsor of the organization.

SEATED: Fred Heine, Albert Thiel, Betty Kam, Elaine FitzGerald, secretary, Virginia Young, Jacqueline Duffey, Moses Mahoi, president, Henry Martinez. STANDING: Harry Parkhill, Robert Brown, Charles Mather, Verne Chandler, Russell Coats, Floyd Mevis, Dr. St. Clair.





CENTER: Doris Brooks. LEFT TO RIGHT: Charles Bugbee, Shirley Moren, Margaret Ewert, Genevieve Yant, Alice Brooks, Joanne Jump, Walter Stalhut.

BOOSTER CLUB

The Booster Club has passed out more "roses" than any other organization on campus. Each year its members sponsor various activities in order to maintain a fund for honoring Indiana Central's athletes. Sweaters and honor letters are presented to high scoring men in football, baseball, basketball, tennis, track, and golf. Under the sponsorship of Dr. Morgan, the group has charge of the concession stand at ball games in the gym. Coco Cola machines in each of the four dormitories are leased by the Booster Club. Their task has not been easy but every shoulder was at the wheel.

S. C. A.

The Student Christian Association, sponsored by Professor Weber, plays a prominent role on the Indiana Central College campus. All Centralities are members. This organization, established for the purpose of correlating the religious and social activities on the campus, conducts, through its various committees, the Big Mixer; the Walkouts; Tug-of-war; the Thanksgiving, Christmas and Sweetheart banquets; as well as Religious Emphasis Week; pre-Easter devotions; and Wednesday night speakers.

SEATED: Helen Mays, Hilda Campbell, Trudy Fields, Russell Coats, Verda Spangler, Bobbye Bettag, Elizabeth Rider. STANDING: Pauline Strickler, Joe Miles, Max Hoffman, Moses Mahoi, Leland Brett, Charles Peckham, Rollin Tindall, Floyd Mevis, John Trinkle, Jim Fisher.



Phi Alpha Epsilon

Phi Alpha Epsilon, Freshman Honor Society, is composed of students who, as freshmen, demonstrated their scholarship and contributed to the general welfare of campus life.

Candidates for membership must be voted upon by the entire faculty. The announcement of successful aspirants is a highlight of the annual honors day program.

Members are: Rosemary Arndt, Iris Lacey Brown, Verne Chandler, Charles Dill, Jacequeline Duffey, Elaine FitzGerald, Patricia Hilficker, Rebecca Sloan, Martha June Stone, Emilee Ann Toliver, Edwin Tryon, and Edna Wise.

SEATED: Patricia Hilficker, Emilee Ann Toliver;
STANDING: Rosemary Arndt, Verne Chandler, and
Edna Wise.



STUDENT COUNCIL

The Student Council is organized for the purpose of encouraging students to assist in investigating the laws by which they are governed. The council endeavors to find the best solution to student problems and champions a better organized student body and adequate student activities. The democratic body is composed of four student-elected officers—president, vice-president, and boy and girl representatives at large—and one elected representative from each student organization on campus. Objections to or proposed corrections of present conditions or plans for worthy innovations are brought before the council where they are subjected to searching investigation, unfettered discussion, and reflective consideration until a possible solution is agreed upon. Recommendations from the council are delivered to President Esch for his investigation and authorization. If necessary he presents them to the faculty for approval. Any proposals rejected by the administration may be taken to the board of trustees if students believe the matter of great importance.

SEATED: Grace O'Reilly, Alvera Baldwin, Barbara Hotz, Doris Brooks, Rebecca Sloan, Emilee Ann Toliver, Barbara Bettag. STANDING: Louise Dragoo, Loren Hoch, Bob Fyffe, George Easley, Charles Dill, Albert Thiel, Joe Miles, Henry Martinez, Jim Fisher.





FRONT ROW: Joyce Stone, Alvera Baldwin, Joanne Baldwin, Rose Ann Rider, Phyllis Stuck, Betty Jean Sackmire. SECOND ROW: Barbara Hotz, Doris Brooks, Joanne Jump, Eloise Bilby, Alice Brooks, Nancy Abney, Marian Annis. THIRD ROW: Joyce Porter, Joan Priest, Delores Gaylor, Martha Stone, Marilyn Axel, Betty Jo Smyser, Helen Uncapher, Catherine Sommers, Bobbye Bettag.

THEACALLOSIA-ZETAGATHEA

These brother and sister literary societies have a two-fold purpose—that of developing well-poised personalities in their members with broad-minded outlooks on life and, at the same time, perfecting ability in oral expression and in creative writing.

In conducting their business the societies adhere to proper parliamentary procedure, thus giving their members training which, as campus and community leaders, they will need.

Thecallosia and Zetagea, together with the other literary societies, annually sponsor the Formal Reception and the Literary Banquet.

Several social functions highlighted the members' past social season. Thecallosians and Zetageans jointly sponsored a hay-ride and weiner-roast in May. The sister society maintained a booth at the Junior Class Carnival while Zetageans took pride in their homecoming float and presented their annual chapel skit mimicing the professors.

Co-operative sponsors for these societies are Dr. Anna Dale Kek and Mr. William Miller.

SEATED: Bob Miller, Bill Stelzer, Virgil Hanson. STANDING: Bob Stepro, Bill Dazey, Wayne Shipley, Charles Bassett, Albert Thiel, Bill Eaton, Dave Elliott, Phil Hughes, Keith Brown, Francis LaRussa, Fred Heine.





SEATED: Kathleen Chappelle, Helen Moon, Thelma Washburn, Emilee Toliver, Helen Mays, Verda Spangler, Virginia Young, Fern Kincaide. SECOND ROW: Laveta Smith, Joyce Knight, Emma Lou Wilson, Jacqueline Duffey, Darlene Knobloch, Betty Kam, Ruth Clausius, Elizabeth Rider, June Holt, Gertrude Beasley. THIRD ROW: Rebecca Sloan, Pauline Strickler, Yvonne McMurray, Leona Bottrell, Margaret Ewert, Anna Hite, Hilda Campbell, Shirley Moren, Dorothy Steele, Joan Dennis, Edna Wise.

PHILALETHEA—PHILOMUSEA

The Philalethean and Philomusean literary societies conduct all meetings in the parliamentary fashion prescribed by *Robert's Rules of Order* so that members may develop facility in transacting business in a methodical manner and behave with decorum in a formal gathering. Members gain experience in distinctive literary productions and achieve poise in speaking before an audience.

New members are received into the societies in impressive initiation ceremonies. Both societies cooperate with the other literary societies in sponsoring the Formal Reception for all students and faculty members each fall. In the second semester they participate in the annual Literary Society Banquet. Each year's outstanding productions are submitted to the Awards Day Committee.

Not all activities are so restrainedly formal, however. Philalethea's members slip out in jeans and jackets early one spring morning each year to greet the sunrise and cook breakfast over an open fire. Patrons of the Junior Class Carnival bought candy at Philalethea's booth.

Miss Sibyl Weaver and Mr. Evan R. Kek are the amiable sponsors of Philalethea and Philomusea respectively.

Philalethea's presidents during this year were: Rebecca Sloan, June Holt, Anna Hite, and Emilee Ann Toliver.

Philomusea's presidents were: James W. McCoy, Jay A. Taylor, Bryce G. Armstrong, and Rollin J. Tindall.

SEATED: Floyd Mevis, Jim McCoy, Joe Miles. STANDING: Gordon Cole, Marion Wells, Harry Parkhill, Lionel Gouty, Bryce Armstrong, Russell Coats, Jay Taylor, Bob Fyffe, Richard Smitley, Rollin Tindall, Charles Peckham.





SEATED: Barbara Hotz, Alice Brooks, Jacqueline Duffey, Fern Kincaide, Helen Moon, Joan Hostetler, Joyce Leichty. STANDING: Larry George, Don Ray, Betty Jo Smyser, Alvera Baldwin, June Holt, Bobbye Bettag, Helen Uncapher, Edna Wise, Dwight Taylor, Wayne Shipley, Louise Dragoo.

REFLECTOR

To reflect campus activities is the principal purpose of *The Reflector*, for the many students who report for the various organizations are a barometer of student thought, life, and campus events.

Reaching all alumni and prospective students, *The Reflector* is Central's "best seller."

ORACLE

Through the combined efforts of the whole staff, this 1950 Oracle is presented to you. The staff, chosen from the junior class, is: Barbara Bettag, editor; Jim Fisher, business manager; Joe Miles, and Henry Martinez, co-editors of sports; Jackie Duffey and Doris Brooks, co-editors of copy; Joyce Porter, art and snapshots editor; and Larry George, photographer.

We are greatly indebted to Mr. Kek, our sponsor, for his cooperation and advice and to Miss Harriet Bunting for her work as our proofreader.

Our sincere thanks is extended to Mr. Noer of the Indianapolis Engraving Company, to the Craftco Cover Company, and to our printer, the Graessle-Mercer Company for their interest and efforts in making the 1950 Oracle possible.

SEATED: Jacqueline Duffey, Bob DeNoon, Bobbye Bettag, Elizabeth Rider. STANDING: Joyce Porter, Elaine FitzGerald, Verne Chandler, Jim Fisher, Gertrude Beasley, Don Ray, Joe Miles, Doris Brooks, Jim Mansfield.





SEATED: Mrs. Robert Holt, Mrs. William Stelzer, Mrs. Elwood McBride, Mrs. Edward Pruitt, Mrs. Lloyd Davis, Mrs. Charles Jennings, Mrs. Harold Pagel, Mrs. William Clark. STANDING: Mrs. Charles Dill, Mrs. Dwight Taylor, Mrs. Louis Sommers, Mrs. Ted Woodard, Mrs. Armour Keller, Mrs. Earl Bickel, Mrs. Stanley Klos, Mrs. Harold Schutz, Mrs. Richard Kistler, Mrs. Wayne Fansler, Mrs. Keith Conrow, Mrs. Clayton Kinkade, Mrs. Robert Newnum, Mrs. Howard Turley, Mrs. Eldon Johnson, Mrs. Ward Vass.

STUDENT WIVES' CLUB

That not only the married women students but also the wives of married students contribute to Indiana Central's life is evidenced by the new flag which hangs in the gym. Organized in 1948, the Student's Wives Club provides social activity and recreation for its members and promotes a wholesome atmosphere for the married students on the campus.

Officers are: President, June Holt; Vice President, Lois Jennings; Secretary, Sue Sommers; Treasurer, Ruby Kinkade; Chaplain, Doris Woodard; Reporter, Doris Vass; Sponsors, Maudethel Cullom and Nelle Engle.

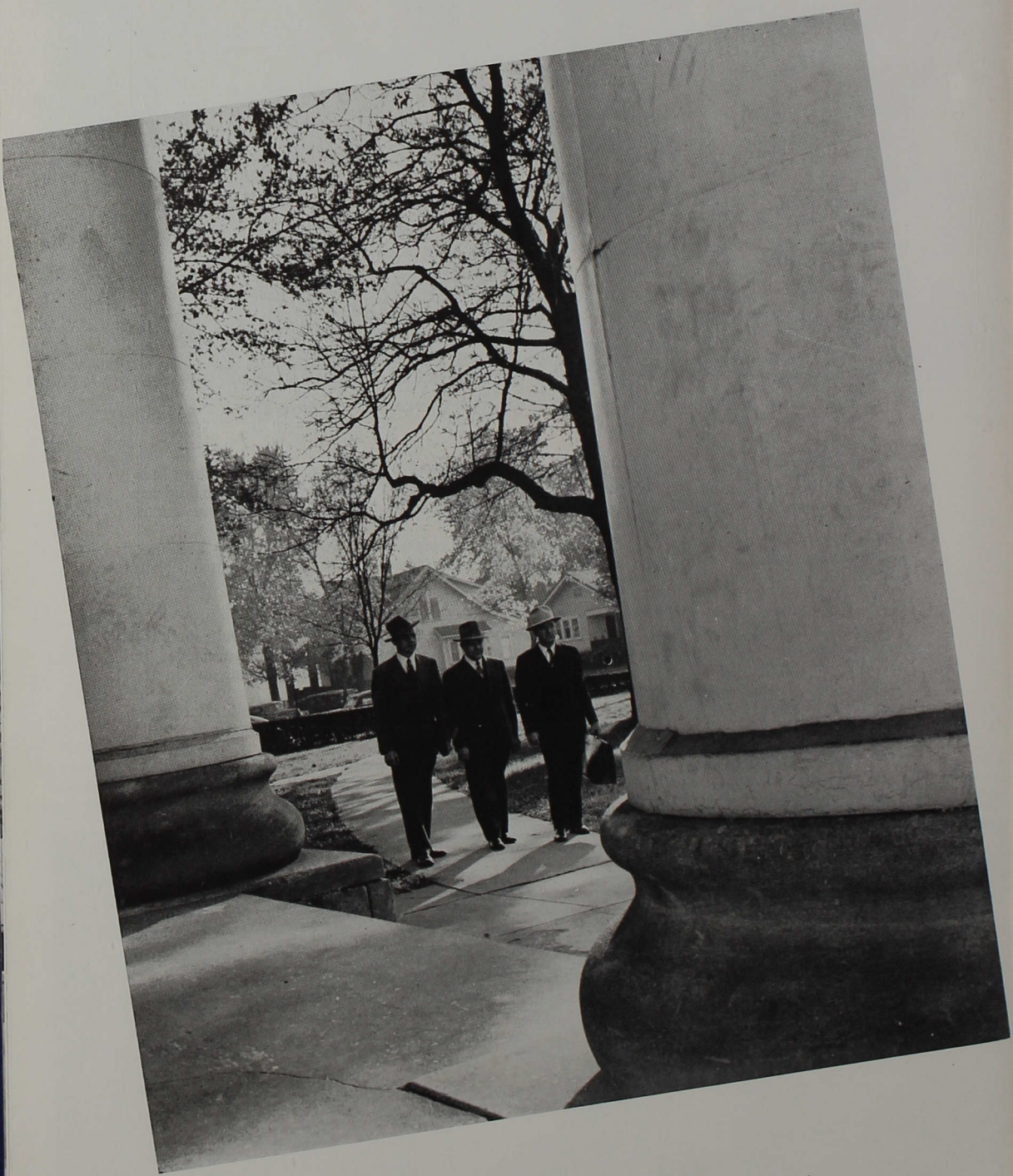
ALPHA PHI OMEGA

Service to the student body and faculty, youth and community, members of the fraternity and the nation, is part of the Alpha Phi Omega's Creed. Translating their ideals into action, they have aided in cleaning up the campus, in the decorating of the student lounge in Wilmore Hall basement and in the elections of the student council and campus queens.

Officers and advisors are: David Elliott, President; Don Dow, Vice President; Carl Smith, Recording Secretary; William Dazey, Corresponding Secretary; Rawlins Whitaker, Treasurer; John Sinclair, Historian; Bill Armstrong, Representative to the Student Council; Advisors, Mr. Davis, Chairman, Dr. Morgan, Mr. Kent, Mr. Nicoson, Mr. Cravens, Mr. Dalglish, and Mr. Uncapher.

STANDING: David Elliot. FIRST ROW: Loren Hoch, Carl Smith, Keith Brown, Vincent Klos, Jack Fuller. SECOND ROW: Professor Davis, Sherman Cravens, Angus Nicoson, Robert Kelsey, David Saunders. THIRD ROW: Don Dow, Don Bulthaup, Lyle Sheeley, Keith Chrisman, Joseph C. White, Dave Dalglish, advisor. FOURTH ROW: Jesse Smithers, Rawlins Whitaker, Bill Armstrong, Charles Cook, Creig Uncapher.





Behind

These

Pillars . .

Administration



President

From the versatile background of farm, law, industry, teaching and preaching, coupled with brilliant scholastic attainment, Dr. Esch is particularly fitted to guide life and activity at Indiana Central College.

Not only is President Esch an administrator but also he is a sympathetic friend, wise counselor, and spiritual guide to both students and faculty. His five years at Central have been marked by growth, expansion, and development of the College.

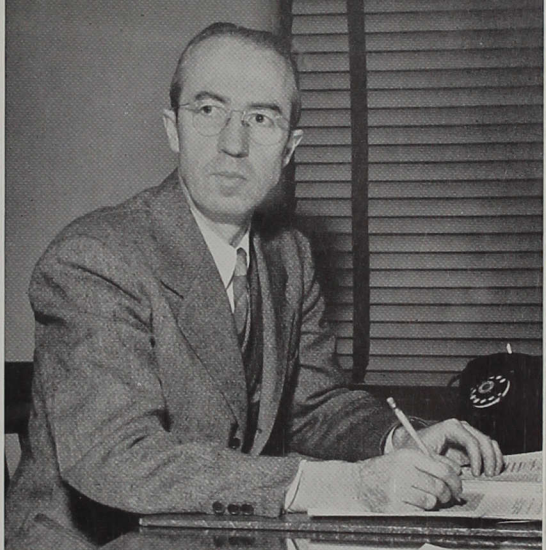
In addition to his contributions to the Evangelical United Brethren Church, his activities have extended to other communions throughout the state and nation.

The respect and regard with which he is held by civic and state groups makes having such a person for our president a challenge which we highly esteem.



Dr. Esch becomes an honorary member of the "C" Association as Ivan Moreman presents him with a "C" sweater.

DR. ALLEN BOND KELLOGG
Academic Dean



DR. EARL STONEBURNER
Dean of Men



MISS MABEL SHELQUIST
Dean of Women

DR. EARL STONEBURNER
Registrar



MISS MAUDETHEL CULLOM
Assistant to the Registrar

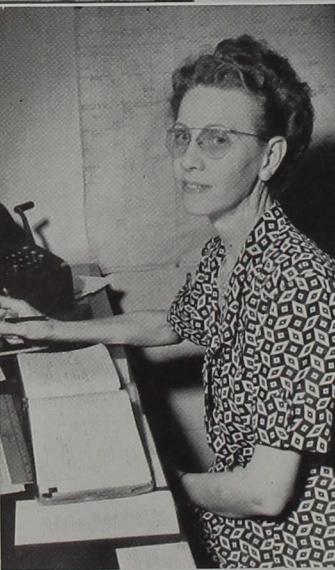


BUSINESS MANAGER
Evan R. Kek



OFFICE FORCE

Virginia Coats, receptionist
Ruth Hagelskamp, secretary to
the business manager.
Betty Turley, secretary to the
president.



CASHIER
Pearl S. Putnam



LIBRARY

Edna Miller, librarian
Eileen Pollard, assistant librarian



PUBLIC RELATIONS
Sherman Cravens

Geraldine McBride, secretary

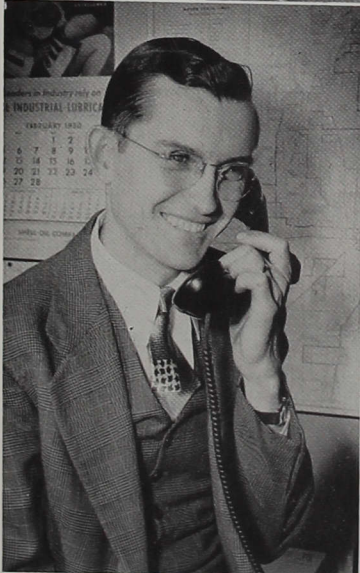
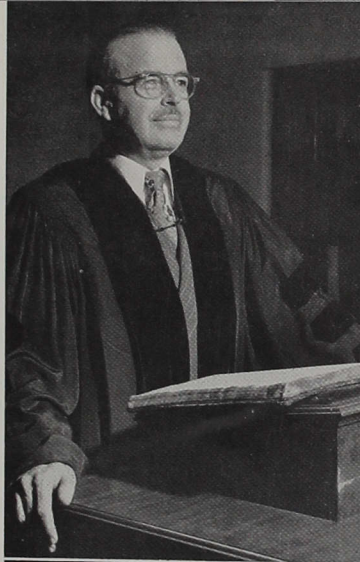
COLLEGE PASTOR
Rev. Roy E. Turley

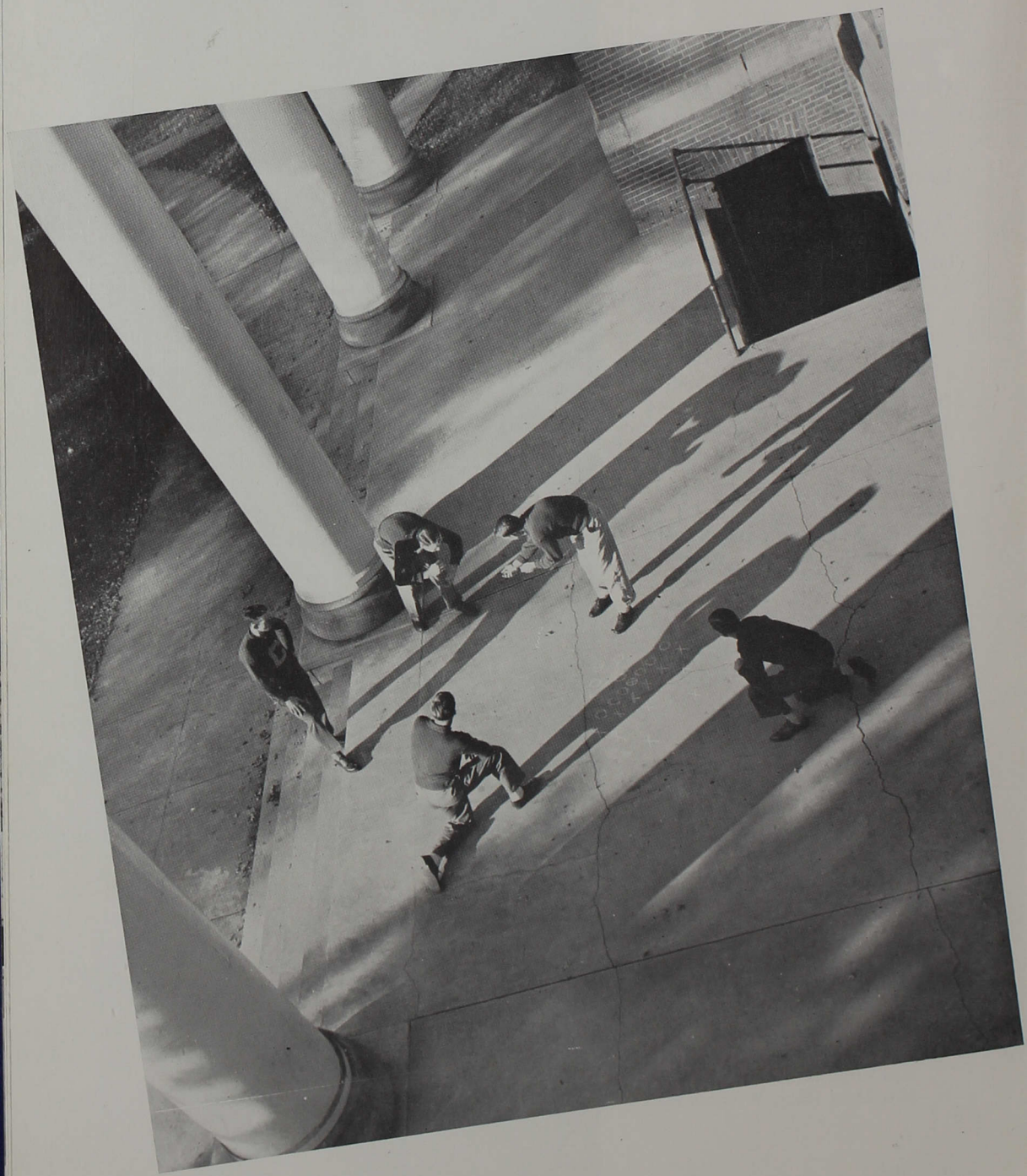
DIETICIAN
Ida Peachey

MAINTENANCE
Birtle Allen, supervisor of maintenance

BOOKSTORE MANAGER
Mary Steele

HOUSEMOTHERS
Mrs. Nelle Engle, Men's Hall
Mrs. Alice Musselman, Dailey Hall
Miss Virgil Braner, Buxton Hall
Miss Mary Huey, Wilmore Hall





Behind

These

Pillars . .

Athletics

Football Highlights

At the end of the season this year, the overall score was 4 up—4 victories for the Greyhounds, 4 for the opposition. In counting accumulated scores, however, it was noted that Central had a total of 139 points, the opposers 116.

Out of the seven games played within the Hoosier College Conference, the Greyhounds won three which placed them fourth in the Conference. Anderson, Hanover, Franklin, and Rose Poly were the Conference teams defeating the Greyhound grids—Taylor, Huntington, and Canterbury falling before the Centralites.

Ivan Moreman was chosen captain of the team, and Dale Robinson was elected the most valuable player for the year. Nine players will graduate this year: Clark, Dill, Eicher, Hanson, Klos, La Russa, McGrath, Moreman, and Schutz.

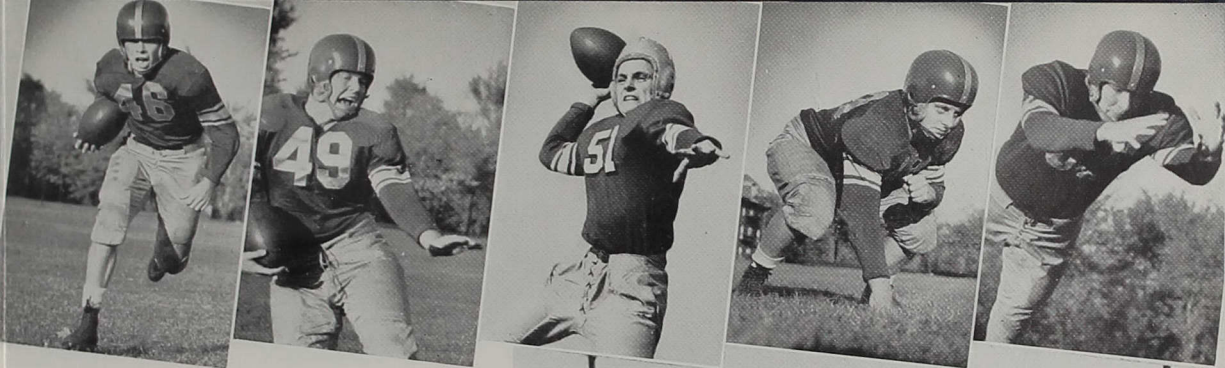
Sept. 17.....	Rose Poly	26.....	Central	28
Sept. 24.....	Huntington	26.....	Central	6
Oct. 1.....	Franklin	13.....	Central	14
Oct. 15.....	Manchester	13.....	Central	0
Oct. 22.....	Canterbury	8.....	Central	0
Oct. 27.....	Anderson	20.....	Central	27
Nov. 5.....	Hanover	6.....	Central	21
Nov. 12.....	Taylor	27.....	Central	20

MOST VALUABLE PLAYER

For the 1949 football season the team elected Dale Robinson as the most valuable player. By being elected to this honor, Robinson received the W. P. Morgan award. Dale is from Springfield, Illinois, and entered I. C. C., in the fall of 1948, as a transfer from Millikin University, Decatur, Illinois. Robinson has another year to play for the squad; consequently, the line will be strengthened by his efforts throughout the next season.

STUDENT MANAGERS: Funk, Albert, Pruitt, Truesdale, STANDING: Coach Nicoson, Stalhut, Shaw, Turley, Windell, LaRussa, Savenelli, Robinson, Wood, Eicher, Clark, Coach Linson. SECOND ROW: Jaus, Harvey, Crowe, Robinson, Francis, Strachan, Barnes, Leistikow, Hanson, Rosemeyer, Adams, Woodmansee. THIRD ROW: Dill, Schutz, Moreman, Owen, Klos, McGrath, Wheeler, Chandler, Hurrle, Roberts, Spilly, Kincaide.





Lettermen

Bill Clark

Chuck Dill

Paul Eicher

Virg Hanson

Stan Klos

Dave Shaw (upper right) sweeps across the gridiron for a touchdown in the Huntington game as Bob Woods halts the opposition.



Chuck Dill (lower right) carries the pigskin into Franklin territory.



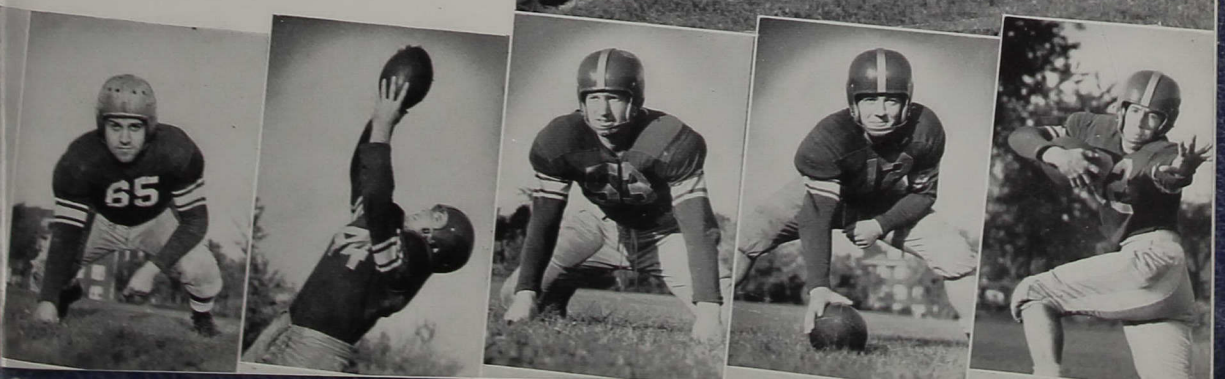
Chick LaRussa

Bill McGrath

Ivan Moreman

Harold Schutz

Tom Barnes





Verne Chandler

Billy Crowe

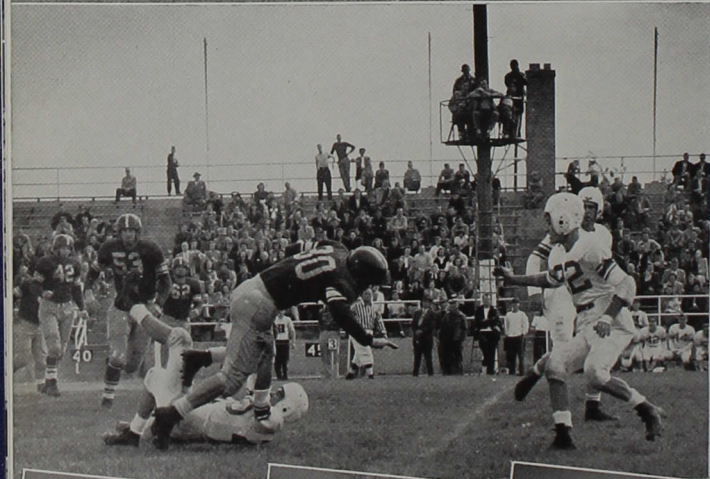
Bob Harvey

Joe Hurrel

Robert Jaus



Dale Robinson (upper left) surprises a Franklin ball-carrier as Kincaide, Klos, Shaw, and Chandler tangle with the opponents.



Shaw (lower left) takes a tumble across the fifty yard line into the Huntington turf.

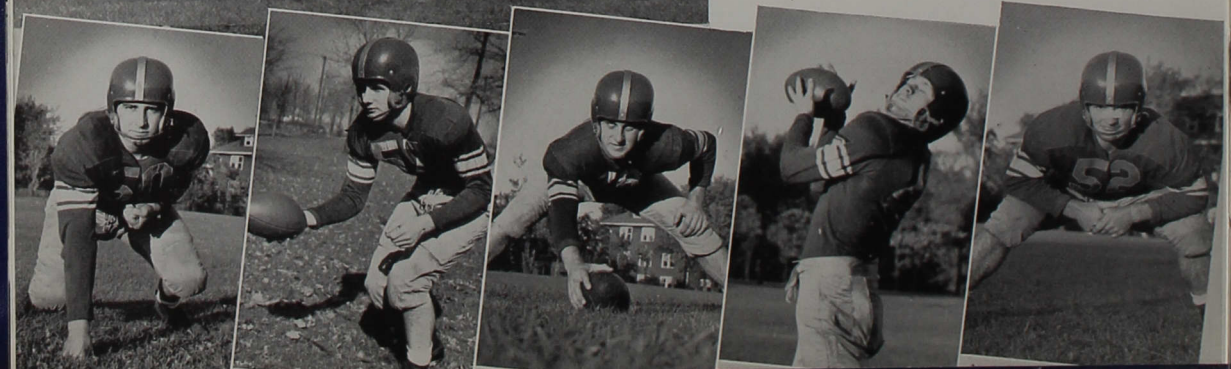
Cy Kincaide

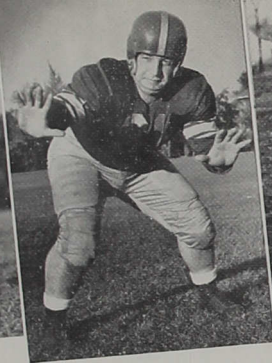
Hank Leistikow

Jack Owen

Windy Roberts

Dale Robinson





Herb Rosemeyer

Renaldo Savenelli

Gerald Schroder

Dave Shaw

Arnold Spilly

Tom Barnes (upper right) grips the pigskin as Huntington players pyramid the Greyhounds.



Dill (lower right) swerves around a Rose-poly player for a twenty-yard gain.



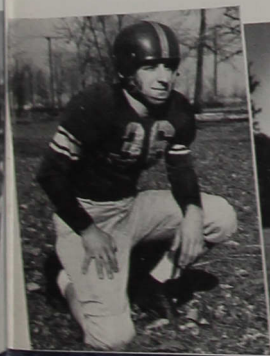
Hank Leistikow

Ronald Strachann

Robert Wheeler

Bob Wood

Lloyd Woodmansee



Cross-Country



FIRST ROW: Ray Alexander, Henry Martinez, Arthur Bright, Grant Marshall. SECOND ROW: Dave Jones, Leroy Rapp, J. C. White, Coach Rice.

The cross-country team finished its season by placing third in the Hoosier Conference Meet. The record for the year was good with six victories and two losses.

David Jones placed third in the conference meet. He was named in the Midwest Long Distance Log Honor Roll, and was also elected captain by the team. Art Bright, J. C. White, Ray Alexander, and Grant Marshall were other outstanding performers.

Coached by Jack Rice, the Central harriers deserve much credit for the season. A better year is anticipated during the 1950-51 season because all but one of the lettermen will be returning.

	We	They
Franklin	22	42
Butler	35	20
Taylor	33	26
Canterbury	16	40
Anderson	15	40 (Forfeit)
Earlham	15	40

Triangular Meet

Indiana Central	25
Hanover	39
Franklin	60

Hanover	23	32
---------------	----	----

Basketball formula: Team + "Nick" = Victories!

Indiana Central narrowly missed a second consecutive Hoosier College Conference basketball title when Hanover's Panthers defeated the Hounds in a double overtime 89-77. Central earlier had beaten the Panthers with ease 76-62.

In the Midwest Tourney at Indiana State, the Greyhounds were defeated by Franklin 61-58. A week earlier Central had defeated the Grizzlies 70-64. Franklin went on to win the tourney.

At the conclusion of the regular season, the Hounds were invited to participate in the N. A. I. B. play-offs at Indiana State. Evansville defeated Central in the first game 90-81. The Greyhounds returned the next night to defeat Hanover in the consolation game 74-71.

The season wound up with Central having an overall record of 18 wins and 9 losses. In the Conference Central won 10 and lost 3.

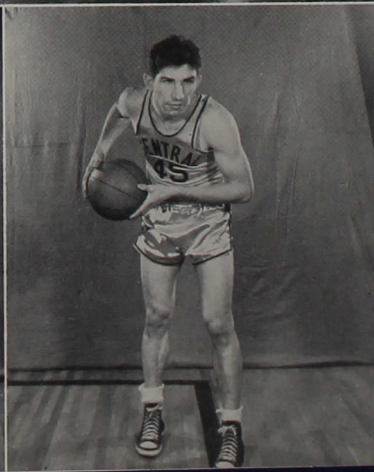
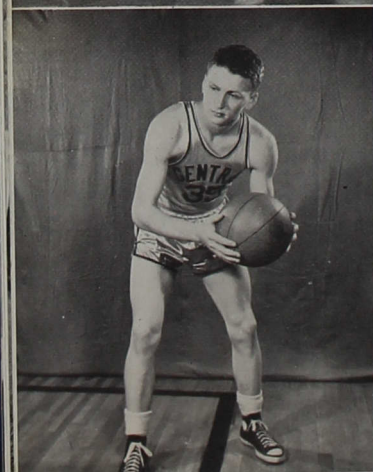
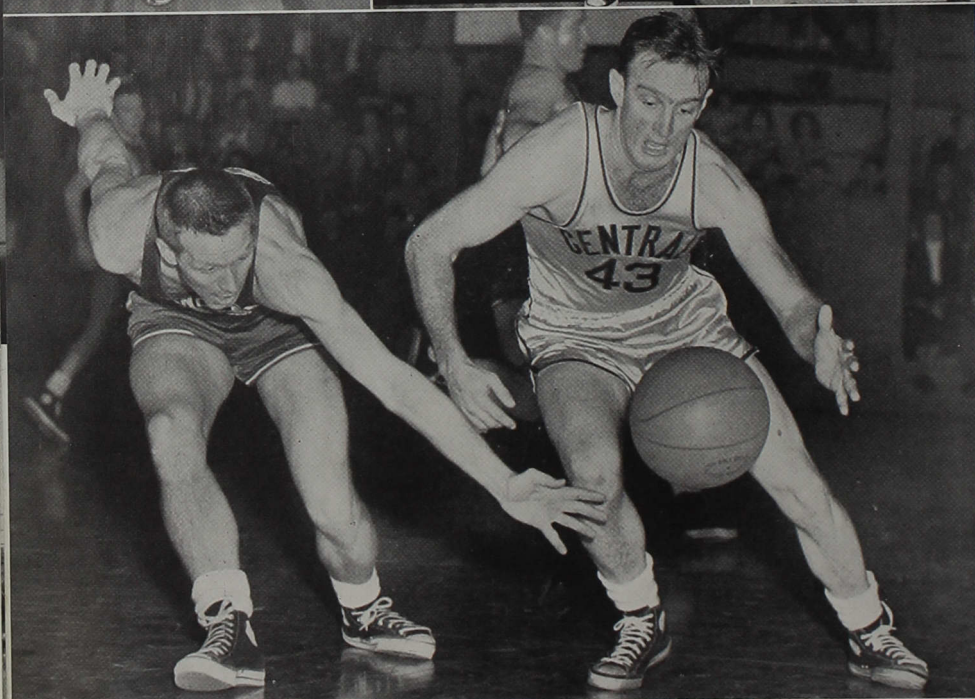
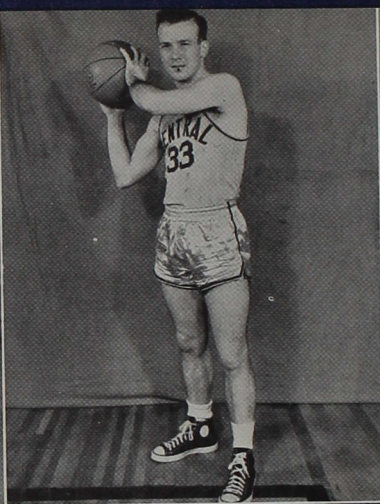
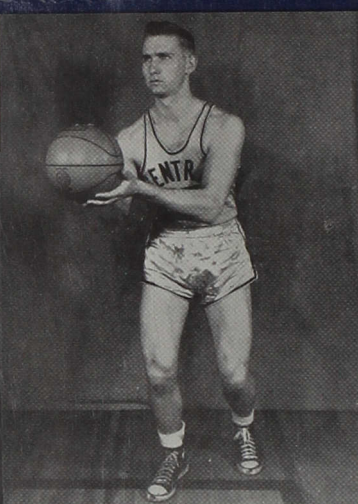
At the conclusion of the season Dwight Swails and Woody McBride were selected for the All-Conference Team. Swails set a Conference scoring record by scoring 313 points in 13 games for an average of 24 points per game.

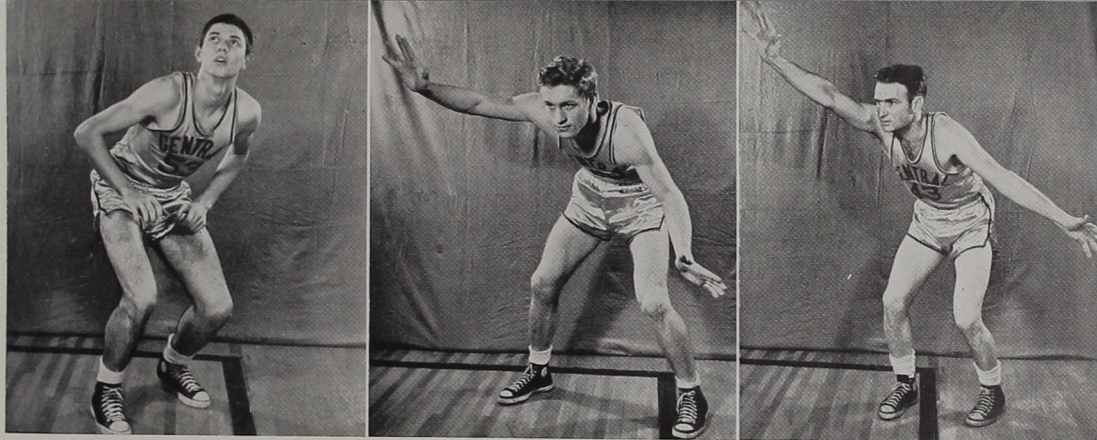
Harley Griffith and Bill McGrath were elected honorary co-captains of the squad and McBride was named most valuable player.

Angus Nicoson deserves much credit for coaching the team through one of its toughest schedules as the defending champions of the Conference.



SEATED, FIRST ROW: Arthur Funk, Milton Truesdale, Robert Robison, Robert Ice, Wendell Roberts, Richard Theil, Dave Jones, Russel Albert, Edwin Pruitt. SEATED, SECOND ROW: Elwood McBride, James Blevins, Bill Brown, Leon Patterson, Dwight Swails, John Sinclair, Harley Griffith, Bill McGrath, Jack Colescot, Don Stevenson. STANDING: Coach of "B", team Ivan Moreman, Jay Windell, Max Moore, Henry Leistikow, William Pichard, William Dixon, Jim Lucas, Bill Baker, Richard Crowe, Coach Angus Nicoson.





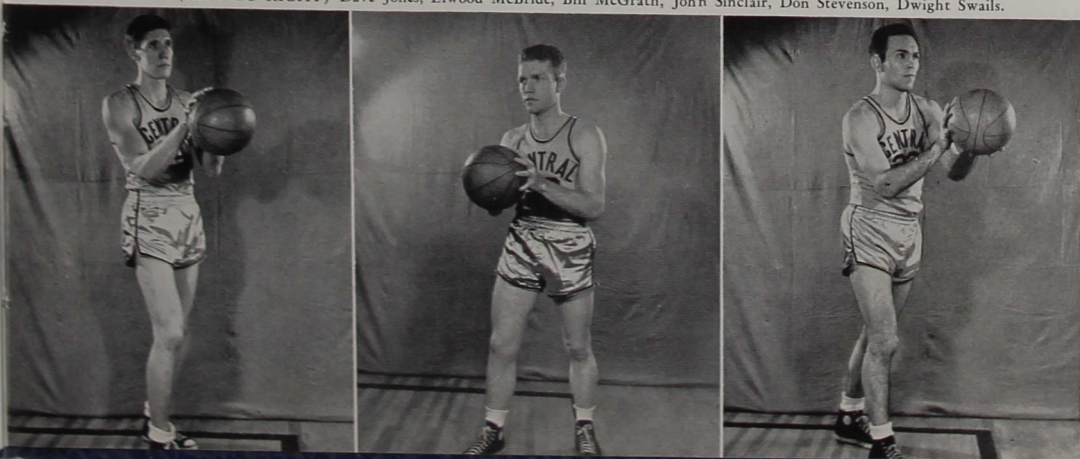
(LEFT TO RIGHT) Jim Blevins, Jack Colescott, Harley Griffith, Leon Patterson, Windell Roberts, Robert Robison.

Lettermen

			We	They
Nov. 22	Huntington	55	40
Nov. 30	Tri-State	65	47
Dec. 2	E. Kentucky	53	66
Dec. 3	U. of Kentucky	61	84
Dec. 6	Ball State	71	54
Dec. 10	Earlham	56	47
Dec. 13	Franklin	70	64
Dec. 17	Taylor University	82	76
Dec. 22	Villa Madonna	76	68
Dec. 27	Franklin (Midwest Tourney)	58	61
Jan. 5	Earlham	42	41
Jan. 7	Canterbury	59	65
Jan. 10	Hanover	76	62
Jan. 14	Manchester	71	55
Jan. 17	Anderson	72	53
Jan. 19	Indiana State	60	61
Jan. 26	Southern Illinois	55	72
Jan. 28	North Central	61	57
Jan. 31	Huntington	78	46
Feb. 4	Canterbury	56	55
Feb. 9	Rose Poly	87	52
Feb. 14	Franklin	49	54
Feb. 18	Villa Madonna	74	53
Feb. 21	Hanover	77	89
Mar. 1	Taylor University	77	61
	Evansville (N. A. I. B.)	81	90
	Hanover (N. A. I. B.)	74	71

PICTURE AT LEFT: Courtesy of Indianapolis Times.

(LEFT TO RIGHT) Dave Jones, Elwood McBride, Bill McGrath, John Sinclair, Don Stevenson, Dwight Swails.



Baseball

Featuring the pitching of Danny Ruth and Manford Kistler, the Greyhounds closed the spring sports schedule by annexing the Hoosier Conference baseball championship. In the conference, the Hounds won 10 and lost 4. Their overall record was 11 won and 4 lost.

Fred Yost and Eddie Raab were the only members of the squad to hit over .300. Coach Nicoson credited the fine record to the team's determination to win and to the speed the boys showed on the base paths. We had more stolen bases than any other team in the conference.

At the conclusion of the season, Danny Ruth was elected "Most Valuable Player" and First Baseman John Wallen was named "Honorary Captain" for the year.



SEATED, FIRST ROW: Jack Colescott, Richard Trobaugh, Richard DeMoss, James Andrews; SECOND ROW: Eldon Johnson, Elwood McBride, William Clark, Daniel Ruth, Dale Robinson, John Wallen, Fred Yost; STANDING, Student Manager Milton Truesdale, Manford Kistler, Raymond Kennedy, Charles Mather, Dwight Swails, Bill McGrath, Frank Kattau, Edward Raab, Coach Nicoson.

Opponent	We	Score	They
Taylor	2		4
Franklin	3		2
Anderson	2		14
Manchester	3		2
Rose Poly	7		2
Taylor	9		7
Hanover	4		1
Earlham	6		10
Anderson	8		1
Canterbury	10		7
Earlham	1		0
Rose Poly	8		5
Manchester	0		4
Franklin	1		5
Hanover	10		7
Canterbury	7		6



Golf

The second consecutive season for golf at I. C. C. found Central's golfers breaking even with a 3-3 standing in the Hoosier College Conference. Their seasonal record, that of an improvement over last year, is to be commended.

Track and Field

Three dual meets, two three-way meets, and participation in the Rose Poly Invitational Relay and in the Hoosier College Conference Meet constituted Central's track season last spring. Central proved victorious in three meets and finished fourth in the conference.

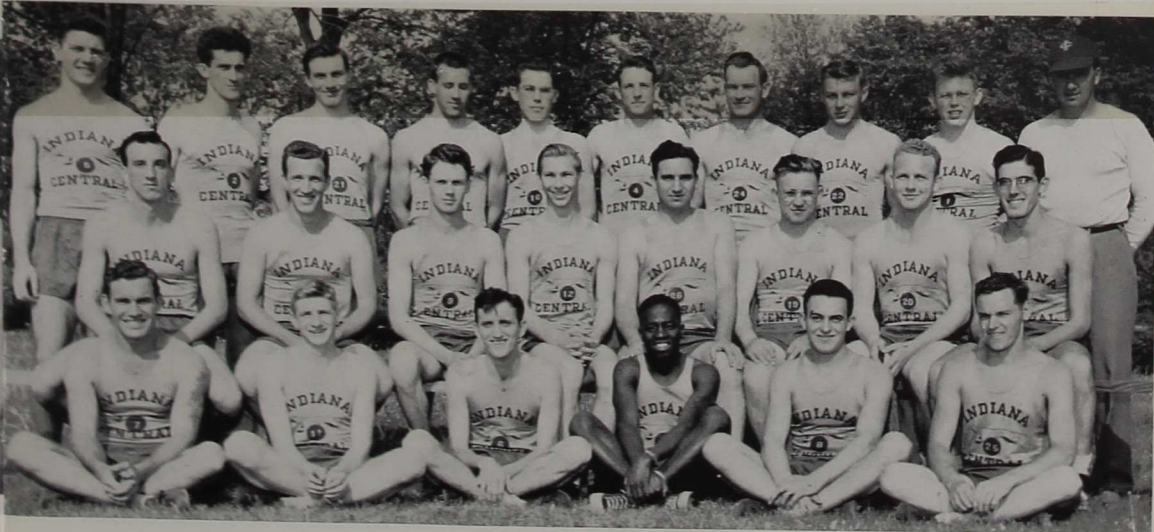
At the conference meet, Bob Harvey set two records in the high and low hurdles and placed in the broad-jump—thus becoming an outstanding performer for the day. Paul Dodson placed in the shot put. Other outstanding performers were Glen Stevenson, Roy Turley, Eugene DeBaun, Bill McGrath, Russell Albert, and Henry Martinez.

William (Fran) Fisher, a graduate of Central, helped Coach Nicolson with the track activities.

SEASON RECORD

Indiana Central	59	Earlham	72
Indiana Central	77½	Rose Poly	53½
Indiana Central	67	Manchester	66
Taylor			
33			
Rose Poly Invitational Relay Meet: Central Placed 11th			
Indiana Central	39½	Anderson	59
Indiana Central	72	Canterbury	59
Hanover			
62½			
Hoosier College Conference Meet: Central placed 4th			

SEATED ON GROUND: Marion Bursen, Roy Turley, Eugene DeBaun, Moses Mahoi, Henry Martinez, Kenneth Kyrle.
SEATED ON BENCH: Louis Lotito, William Kinder, Don Ray, Russell Alberts, Paul Dodson, Calvin Kistler, Glen Stephenson, Ray Alexander.
STANDING: Robert Harvey, David Johnson, Charles Bugbee, Thomas Barnes, Paul Alexander, William McGrath, Manford Kistler, Duane Robertson, Walter Dinninger, Coach Nicolson.





"C" Association

FRONT ROW: Eicher, LaRussa, Clark, Marshall, Klos, Schutz, McGrath, Dill. SECOND ROW: Truesdale, Boling, Kattau, Ray, Savendli, Johnson, Robinson. THIRD ROW: Strachan, Coverstone, Lotito, Hanson, McBride, Turley, Woodmansee. FOURTH ROW: Bright, Stumph, Stalhat, Hurtle, Roberts, Jaus, Albert. FIFTH ROW: Colescott, Owen, Wood, Griffith, Kincaide, Carey, Andrews, Stevenson, Rosselot, Moreman. SIXTH ROW: Blevins, Chandler, Martinez, Barnes, Shaw, Crowe. SEVENTH ROW: Jones, Swails, McKinney, Spilly, Leistikow. EIGHTH ROW: Burseson, Alexander, Dodson, White, McGill. NINTH ROW: Harvey, Preston, Robinson.

At the present this association has a membership of fifty-eight. To be eligible, a student must not only win a varsity letter in basketball, football, track, baseball, cross-country, tennis, or golf, but also be duly initiated by the fellow members of the "C" organization.

The general purposes of the Association are to unite the lettermen of the college in active participation in the school activities and to promote sportsmanship among athletes.

The Association sponsors, or aids in such events as the annual Varsity-Alumni game, the annual class tourney, boxing shows, election of Homecoming Queen, etc. Some of the receipts from such events were divided with the Booster Club for the purchase of athletic sweaters. Besides these activities on campus, the "C" Association seeks to maintain relationship with alumni lettermen.

Girl's "C" Association

The Girls' "C" Association is composed of those girls who have earned a letter award and sweater through active participation in girls intercollegiate basketball and girls' intramurals. One must be at least a junior to receive the award. The membership this year included: Joyce Everett, Emma Lou Wilson, Betty Jo Smyser, Rebecca Sloan, and Helen Uncapher.



Class of 1934 Class of 1935 Class of 1936 Class of 1937 Class of 1938
Class of 1939 Class of 1940 Class of 1941 Class of 1942 Class of 1943
Class of 1944 Class of 1945 Class of 1946 Class of 1947 Class of 1948



Association

The Women's Athletic Association is a group of college women who are interested in physical activities. They are interested in all types of sports and are active in promoting them. The association is a part of the college's physical education program and is a source of information for all women interested in sports.

At the present time, the association is active in promoting a variety of sports. These include basketball, volleyball, badminton, and softball. The association is also interested in promoting other types of physical activities, such as swimming and tennis.

The general purpose of the association is to provide a source of information for all women interested in sports. The association is also interested in promoting a variety of physical activities and is a source of information for all women interested in them.

The association is a part of the college's physical education program and is a source of information for all women interested in sports. The association is also interested in promoting a variety of physical activities and is a source of information for all women interested in them.

W. A. A.



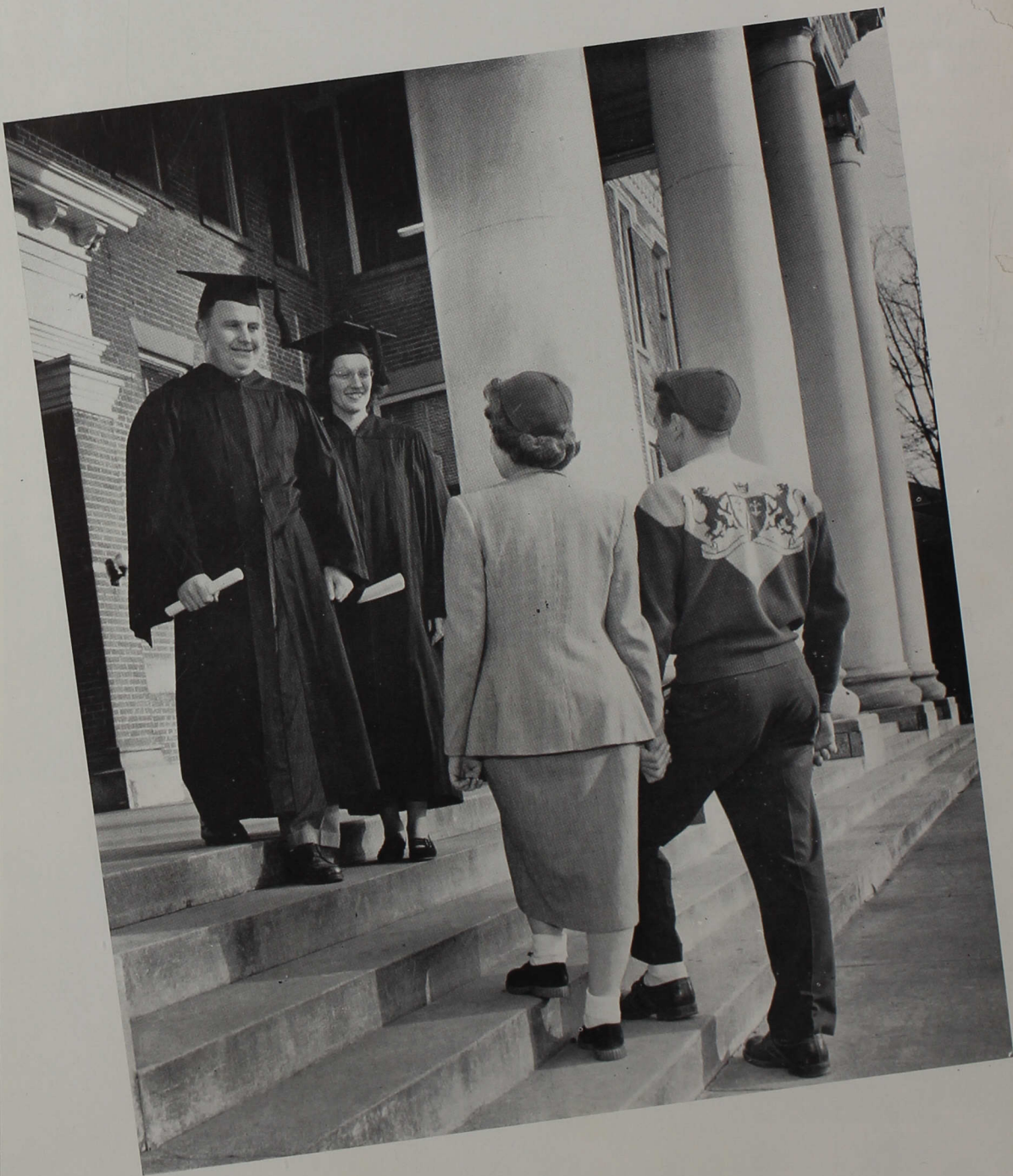
The Women's Athletic Association provides intramural sports for all college women interested in physical activities. Some of the activities included are soccer, volley ball, basketball, badminton, aerial darts, ping pong, and softball.

President June Holt
 Vice-President Emma Lou Wilson
 Sec'y.-Treasurer Shirley Moren
 Publicity Rebecca Sloan

SEATED: Shirley Moren, Ruth Anderson, Yvonne McMurray, Judith Morgan, Emma Lou Wilson, Rebecca Sloan. STANDING: Joyce Everett, Virginia Young, June Holt, Martha Stone, Betty Jo Smyser.

Go get 'em, girls. . . . Midnite snack. . . . Salad daze. . . . Studying? "Pappy" Schutz. . . .
 Han'some Iowan. . . . Welcome! Gab fest. . . . Prince Moe. . . . Three decker. . . . Put your arms
 around me, honey. . . . Four sharps and a flat. . . . Pals. . . . Schmoos. . . . Turning over an old leaf.





Behind

These

Pillars . .

Classes

Seniors



SEATED: June Holt, secretary; Charles Dill, vice-president; Max Hoffman, president.

STANDING: Keith Conrow, treasurer; Leo Miller, sponsor.

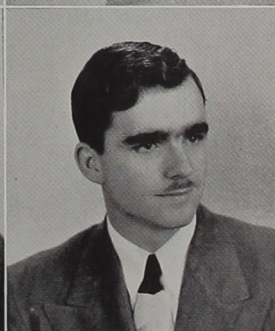
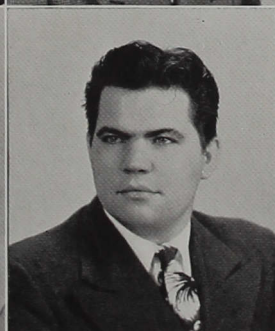
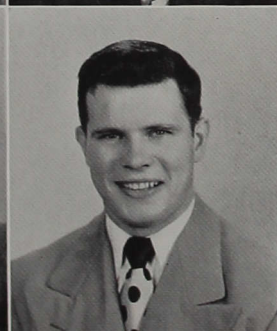
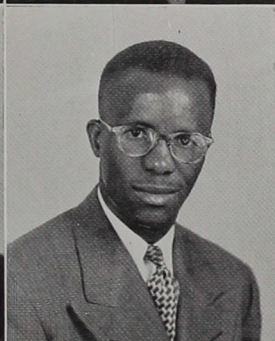
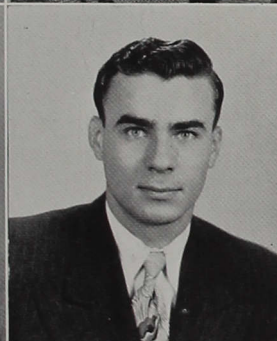
The class of '50, Central's largest graduating class, spent a busy three years and a busier fourth.

Scintillating seniors carried off the Stunt Night award with their improvised band of combs.

This year the seniors presented a week of chapel programs to the students who enthusiastically received them.

Hobgoblin House, the senior play, provided thrills and chills enough for any ghost-lover.

Climaxing their college careers, Graduation Day, a joyful and sorrowful, but nonetheless memorable occasion, became an outstanding day in the lives of most seniors.

**Alvera M. Baldwin**

A. B.
Fort Wayne, Indiana
Major: English
Theacallosia 1, 2, 3, 4, president 4; Reflector 1, 2, 4; Oracle editor 3; English Club 3, 4, vice-president 4; S. C. A. 4; Student Council, representative-at-large 4; Alpha Psi Omega 3, 4; Class secretary 2; Homecoming Queen 2; Campus Queen's court; Who's Who Among Students in American Universities and Colleges 4.

Charles E. Bassett

A. B.
Patchogue, New York
Major: English
Zetagea 1, 2, 3, 4, president 3; International Relations Club 1; Choir 2, 3, 4; Reflector 3, 4; Oracle Staff 3; Future Teachers of America 4; English Club 2, 3, 4.

Byron Amos Bastin

A. B.
Indianapolis, Indiana
Major: History
C. M. A. 1, 3, 4.

James Victor Bennett

A. B.
Indianapolis, Indiana
Major: History
Pan Linguist 3; Future Teachers of America 3; C. M. A. 1; International Relations Club 4.

James Blevins

B. S. in Education
Brownstown, Indiana
Major: Physical Education
"C" Association 1, 2, 3, 4; Basketball 1, 2, 3, 4; Baseball 1, 3; Football 3.

Richard Boling

A. B.
Indianapolis, Indiana
Major: Chemistry
"C" Association 4; Tennis 3, 4; Zetagea 4; Art Club 4; Sigma Zeta 4; Epsilon Sigma Alpha 4.

Luseni Alfred Brewah

A. B.
Sierra Leone, West Africa
Major: Biology
Philomusea 2, 3, 4.

Alice Marie Brooks

A. B.
Green's Fork, Indiana
Major: Sociology
Student Council 3; Booster Club 3, 4; English Club 3, 4 secretary 4; Theacallosia 2, 3, 4, critic 3; Reflector Staff.

***Russell E. Christler**

A. B.
Elkhart, Indiana
Major: Sociology

William Clark

B. S. in Education
Derry, Pennsylvania
Major: Physical Education
"C" Association 2, 3, 4; Football 2, 3, 4; Baseball 1, 2, 3, 4.

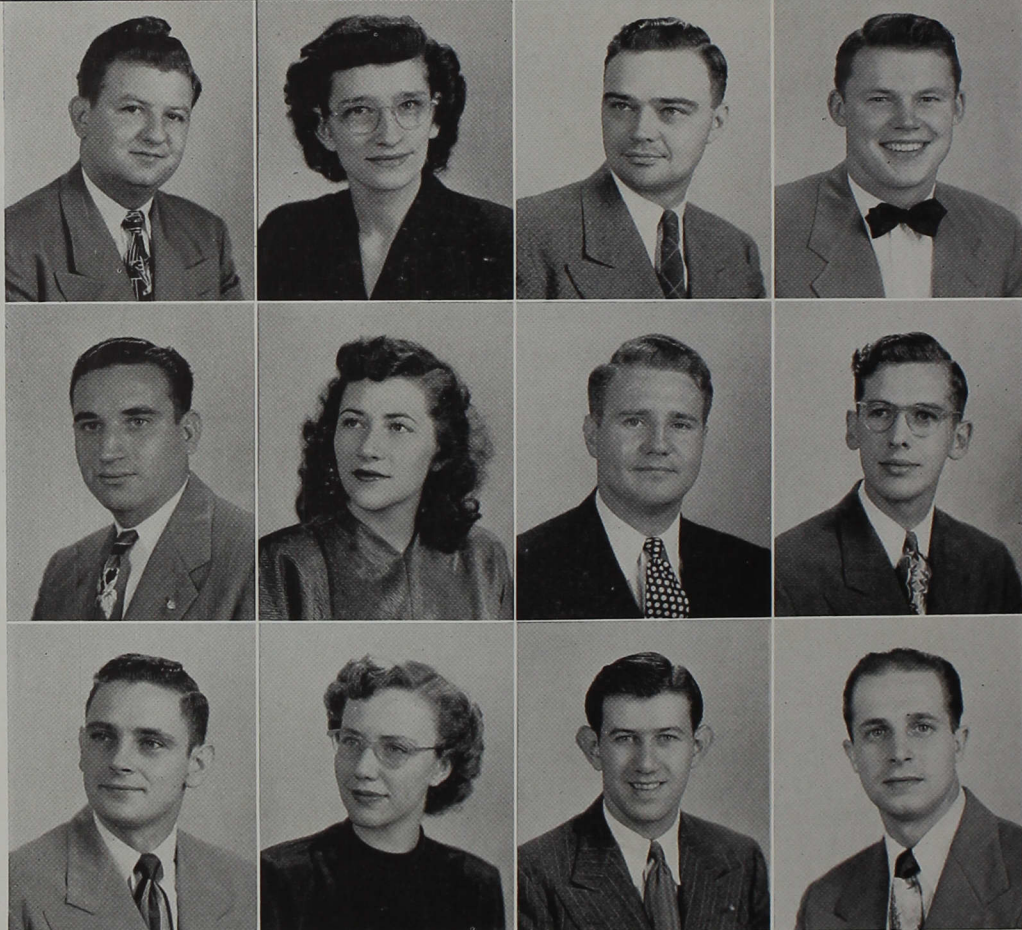
Keith Howard Conrow

B. S.
Minneapolis, Minnesota
Major: Mathematics
Class treasurer 3, 4.

Jerald Thomas Cooney

A. B.
Muncie, Indiana
Major: Bible and Religion
C. M. A. 1, 2, 3, 4.

*Should be classified as a junior.



Lloyd Russell Coverston

B. S. in Education
Indianapolis, Indiana
Major: Physical Education
Golf 2, 3, 4; "C" Association 4.

Ruth Crosby Campbell

B. S. in Education
Indianapolis, Indiana
Major: Elementary Education
Philalethea 2, 3, 4; Choir 2, 3; Orchestra 2, 3, 4; Future Teachers of America 2, 3, 4; Girls Mission Guild 2, 3.

Lloyd Ernest Davis

A. B.
Longview, Illinois
Major: Bible and Religion
C. M. A. 4.

Charles William Dill

B. S.
Danville, Illinois
Major: Biology
"C" Association 1, 2, 3, 4;
Football 1, 2, 3, 4; Student Council Representative at Large 4; Senior Class vice-president 4; Phi Alpha Epsilon 1; Sigma Zeta 4.

Paul Edward Dodson

B. S. in Education
Indianapolis, Indiana
Major: Physical Education
"C" Association 2, 3, 4;
Track 2, 3, 4; Future Teachers of America 4.

Margaret Louise Drago

B. S. in Education
Indianapolis, Indiana
Major: English
Alpha Psi Omega 2, 3, 4, president 3, secretary-treasurer 4; Vesta Club 2; English Club 3, 4; Art Club 3; Student Council 2, 3, secretary 4; Future Teachers of America 4; Reflector Staff 3, 4.

Donald Jean Durant

B. S. in Education
Mohawk, Indiana
Major: Music
Band 3, 4; Music Club 3, president 4.

George Stanley Easley

A. B.
Clay City, Indiana
Major: English
Philomusea 1, 2, 3, 4, president 3, 4; C. M. A. 1, 2, 3, 4; English Club 3, 4; Student Council 2, 3, 4; Dormitory president 4; Oracle Staff 3; S. C. A. 2, 3, treasurer 3.

Paul Marion Eicher

A. B.
Indianapolis, Indiana
Major: Biology
"C" Association 2, 3, 4;
Oracle Staff 2, 3; Football 1, 2, 3, 4; Track 1, 2; Sigma Zeta 4; Epsilon Sigma Alpha 4.

Joyce Marilyn Everett

B. S. in Education
Rochester, Minnesota
Major: Physical Education
Women's Athletic Association 1, 2, 3, 4; Philalethea 1, 2, 3, 4; Cheer Leader 4; S. C. A. 3, 4; Basketball 1, 2, 3, 4; Women's "C" Association 3, 4.

Wayne E. Fansler

B. S. in Education
Fairland, Indiana
Major: Physical Education
Future Teachers of America 4.

Harold William Fisher

B. S. in Business Administration
Hartford City, Indiana
Major: Business Administration
Cheer leader 1; Reflector Staff 1, 2; Zetagea 1, 2, 3; English Club 3, 4; S. C. A. 1, 2, 3, president 3; Class president 2; Business Club 4; Quartet 3.



Delores Jeanne Gaylor

B. S. in Education
Richmond, Indiana
Major: Elementary Education
Future Teachers of America
2, 3, 4, secretary 3, treasurer 4; Thecollosia 2, 3, 4, president 4; English Club 4.

Lawrence Irwin George

B. S.
Hammond, Indiana
Major: Business Administration
Zetagathea 1; Reflector Staff 1, 2, 3, 4; Alpha Psi Omega 4; Business Club 4; Oracle Staff 1, 2, 3, 4.

Harley Joseph Griffith

B. S. in Education
Fowler, Indiana
Major: Physical Education
"C" Association 1, 2, 3, 4;
Future Teachers of America 4; Basketball 1, 2, 3, 4.

Virgil Owen Hanson

B. S. in Education
Hammond, Indiana
Major: Physical Education
"C" Association 2, 3, 4, vice-president 4; Football 2, 3, 4; Zetagathea 2, 3, 4; Student Council 3, 4; Future Teachers of America 4.

Dan Smiley Hart

A. B.
Terre Haute, Indiana
Major: Mathematics
Philomusea 2, 3, 4, president 4; C. M. A. 1, 2, 3, 4.

Alvin Marion Hawley

A. B.
Indianapolis, Indiana
Major: Chemistry.

William B. Hayes

A. B.
South Bend, Indiana
Major: Sociology
C. M. A., secretary, Philomusea.

Frederick A. Heine

A. B.
Clay City, Indiana
Major: English
Zetagathea 1, 2; English Club 4; Future Teachers of America 4; Pan-Linguists 2, 3, 4, president 3; Student Council 3; International Relations 4; S. C. A. 4; Class president 1.

Anna Arvada Hite

B. S. in Education
Plymouth, Indiana
Major: Music
Philalethea 2, 3, 4, president 4; Future Teachers of America 2, 3, 4; Music Club 1, 3, 4, vice-president 3; Who's Who Among Students in American Colleges and Universities 4; Dormitory president 4; Campus Queen's court 4.

Loren Lee Hoch

B. S. in Education
Wabash, Indiana
Major: Biology
Class vice-president 3; Future Teachers of America 2, 3, 4; Student Council 4; Alpha Phi Omega 4; Sigma Zeta 4.

Max Norman Hoffman

B. S.
Cory, Indiana
Major: Biology
Class president 3, 4; Future Teachers of America 4; S. C. A. 4; Who's Who Among Students in American Colleges and Universities 4; Sigma Zeta 4; Epsilon Sigma Alpha 4.

June Dipert Holt

B. S. in Education
Walkerton, Indiana
Major: Physical Education
Women's Athletic Association 1, 2, 3, 4, president 4; Philalethea 1, 2, 3, 4, president 4; Student Wives president 3, 4; English Club 3, 4; Reflector Staff 4; Class secretary 4; Student Council 3.

**Robert Earl Holt**

B. S. in Education
Oblong, Illinois
Major: Elementary Education
Booster Club 1; Choir 1, 2; Philomusea 1, 2, 3, 4, president 3; Class vice-president 1; Dormitory president 1; Future Teachers of America 3, 4.

Barbara Elizabeth Hotz

B. S. in Education
Columbus, Indiana
Major: Music
Mixed Quartette 1; Band 3, 4; Choir 1, 2, 3, 4; Music Club 1, 2, 3, 4; Girl's Trio 1, 2, 3, 4; English Club 3, 4; Student Council 4; Reflector Staff 1, 2, 3, 4; Theacallosia 1, 2, 3, 4, president 3; Future Teachers of America 4; Campus Queen 4.

Richard Emmett Houser

A. B.
Stockton, California
Major: Sociology
Philomusea 3; Pan Linguists 4; Band 3, 4; C. M. A. 3, 4.

Philip J. Hughes

B. S. in Education
Corydon, Indiana
Major: Chemistry
Art Club 2, 3, 4; Zeta-gathea 4; Future Teachers of America 3, 4.

Russell Lynn Jenkins

A. B.
Bradenville, Pennsylvania -
Major: History
Philomusea 2, 3, president 3; C. M. A. 2, 3, 4; Booster Club 4; S. C. A. cabinet 2; Future Teachers of America 2.

Eldon Dwight Johnson

B. S. in Education
Richland Center, Wisconsin
Major: Physical Education
"C" Association 2, 3, 4; Baseball 2, 3, 4.

Charles Wayne Jennings

A. B.
Indianapolis, Indiana
Major: English
Choir 1, 2, 3, 4, president 2, 4; C. M. A. 1, 2, 3, 4; English Club 3, 4.

Mary Jordan

B. S. in Education
Indianapolis, Indiana
Major: Music
Music Club 1, 2, 3, 4; Band 3, 4; Choir 1, 2, 3, 4, secretary 3; Orchestra 4; Future Teachers of America 4.

Betty Y. M. Kam

B. S. in Education
Honolulu, Hawaiian Islands
Major: Elementary Education
International Relations Club 4; Philalethea 3, 4; Future Teachers of America 4.

Frank Thomas Kattau

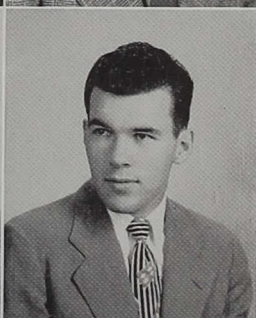
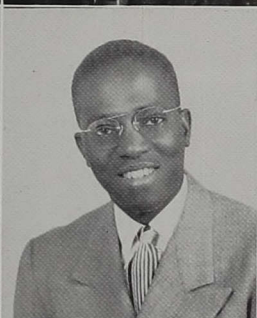
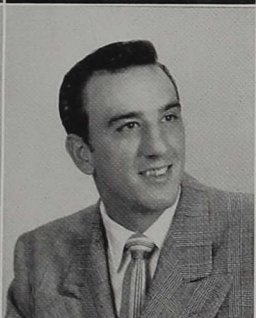
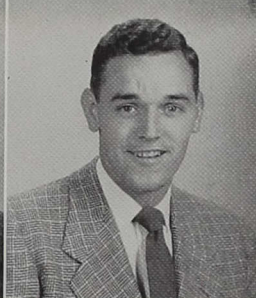
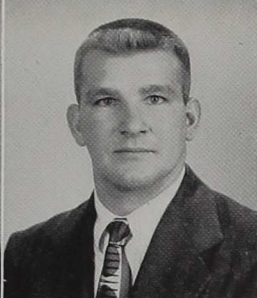
B. S. in Education
Patchogue, New York
Major: Physical Education
"C" Association 1, 2, 3, 4; Baseball 1, 2, 3, 4.

Virginia Keene

B. S.
Indianapolis, Indiana
Major: Elementary Education

William Mitchell Kinder

B. S. in Education
Indianapolis, Indiana
Major: Physical Education
Track 2, 3; "C" Association 2, 3, 4.

**Clayton Wynn Kinkade**

B. S. in Education
 Olney, Illinois
 Major: Elementary Education
 Future Teachers of America 2, 3, 4, vice-president 4.

Fern Elizabeth Kinkade

B. S. in Education
 Olney, Illinois
 Major: Biology
 Reflector Staff 2, 3, 4;
 Future Teachers of America 2, 3, 4; Philalethea 1, 2, 3, 4, vice-president 3;
 Business Club 4.

Stanley Joseph Klos

A. B.
 Patchogue, New York
 Major: Chemistry and Biology
 "C" Association 1, 2, 3, 4;
 Sigma Zeta 4; Football 1, 2, 3, 4; Baseball 1, 2.

Kenneth Kay Kyre

A. B.
 Fairmont, Virginia
 Major: English
 Choir 3, 4; C. M. A. 3, president 4; Band 3, 4;
 Philomusea 4.

Francis James LaRussa

B. S. in Education
 Indianapolis, Indiana
 Major: Physical Education
 "C" Association 2, 3, 4;
 Football 2, 3, 4; Future Teachers of America 4;
 Zetagea 4; Alpha Phi Omega 4.

Louis Frank Lotito

B. S. in Education
 Patchogue, L. I., New York
 Major: Physical Education
 "C" Association 2, 3, 4;
 Track 2, 3, 4.

Moses Musa Mahoi

A. B.
 Sierra Leone, West Africa
 Major: Biology
 Philomusea 1, 2, 3, 4, President 3; Pan-Linguist Club 2, 3; S. C. A. 3, Treasurer 4; International Relations Club, President 4; Who's Who Among Students in American Colleges and Universities 4.

Grant Elwood Marshall

B. S. in Education
 French Lick, Indiana
 Major: Physical Education
 Future Teachers of America 4; "C" Association 4.
 Track 3, 4.

Helen Frances Mays

A. B.
 Frankfort, Indiana
 Major: English
 Philalethea 1, 2, 3, 4, Secretary 4; English Club 3, 4; Future Teachers of America 2, 3, 4; S. C. A. 2, 3, 4; Band 1, 4; Women's Athletic Association 1, 2, 3, 4.

Doris Johnson McCormick

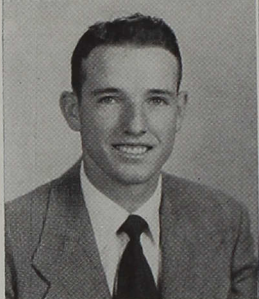
B. S. in Education
 Indianapolis, Indiana
 Major: Elementary Education
 Future Teachers of America 4.

James Wilbert McGoy

A. B.
 Yale, Illinois
 Major: History
 Student Council, president 3; Art Club 3, 4, president 3; Philomusea 1, 2, 3, 4, president 4; C. M. A. 1, 2, 3, 4, president 2;
 Choir 1, 4; Band 1.

Frank Thomas McGill

B. S. in Education
 Franklin, Indiana
 Major: Physical Education
 Future Teachers of America 3, 4; "C" Association 3, 4; Tennis 3, 4.

**William D. McGrath**

B. S. in Education
Fowler, Indiana
Major: Physical Education
Baseball 2, 3, 4; Basketball
2, 3, 4; Football 1, 2, 3,
4; Track 2, 3, 4; "C" As-
sociation 2, 3, 4.

Martha Ann Mennen

B. S. in Education
Lafayette, Indiana
Major: Music
Music Club 1, 2, 3, 4;
College Trio 3; Choir 1, 2,
3, 4; String Quartet 1, 2,
3; Orchestra 4; Philalethea
1, 2, 3, 4; Future Teachers
of America 4; Queen's
Court 4; Homecoming
Queen 3; Cherry Blossom
Queen Candidate 3. Oracle
Staff 3.

Helen Mae Moon

A. B.
Mountain Lake Park, Mar-
yland
Major: English
S. C. A. 1, 2, 3; Reflector
1, 2, 3, Editor 4; Future
Teachers of America 4;
Student Council, Repre-
sentative at large 3; Eng-
lish Club 1, 2, 3, 4; Phil-
alethea 2, 3, 4; Alpha Psi
Omega 4; Epsilon Sigma
Alpha 4.

Ivan Moreman

B. S. in Education
Danville, Illinois
Major: Physical Education
Football 1, 2, 3, 4; Basket-
ball 1, 2; "C" Association
1, 2, 3, president 4; Re-
flector 3.

Garold Henry Muncie

A. B.
Brazil, Indiana
Major: Religion

Charles Robert Noblitt

B. S. in Education
Noblesville, Indiana
Major: English
Philomusea 2; English Club
3, 4; Future Teachers of
America 4; S. C. A. 2;
Alpha Psi Omega 4.

Lucille Valentine Noblitt

A. B.
Noblesville, Indiana
Major: English
English Club 3, 4; Future
Teachers of America 3, 4;
3, 4; S. C. A. 2, 3, 4.

Harold William Pagel

B. S. in Education
Fond du Lac, Wisconsin
Major: History
Future Teachers of Amer-
ica 4.

Harry A. Parkhill

A. B.
Bluford, Illinois
Major: History
C. M. A. 1, 2, 3, 4; Philo-
musea 3, 4; International
Relations Club 4; English
Club 4; Future Teachers
of America 4.

David Perkins

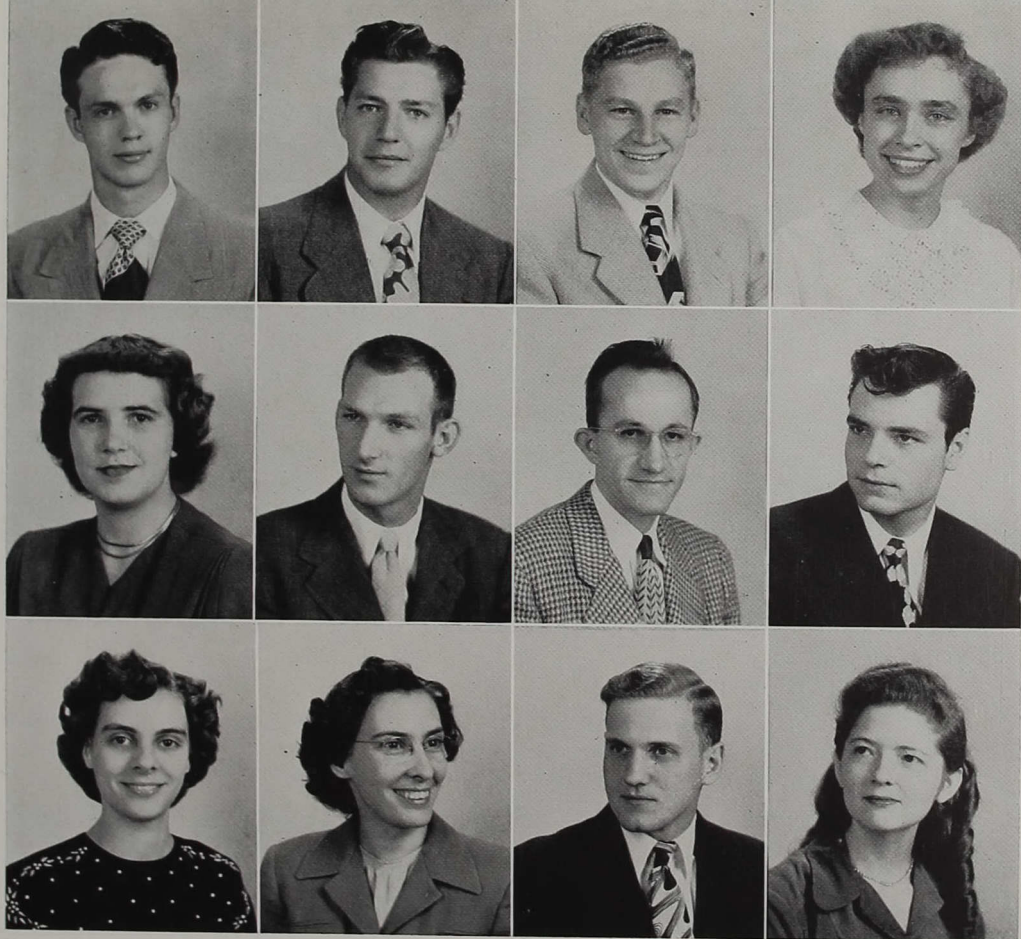
A. B.
Indianapolis, Indiana
Major: History

Ina Joan Priest

B. S. in Education
Indianapolis, Indiana
Major: English
Women's Athletic Associa-
tion, 1, 2, 3, 4; Music Club
4; Theacallosia 4; English
Club 4.

John Albert Rawlings

A. B.
Greenfield, Indiana
Major: Sociology
C. M. A. 3.



Donald Evert Ray

B. S. in Business Administration
Indianapolis, Indiana
Major: Business Administration

Baseball 2, 3, 4; Track 3, 4; Reflector Staff 4; Oracle Staff 4; Business Club 4; "C" Association 4.

Betty Jo Smyser

B. S. in Education
Marion, Indiana
Major: Health and Physical Education

Women's Athletic Association 1, 2, 3, 4, president 3; Thecallosia 1, 2, 3, 4, secretary 3; S. C. A. 3, 4; Reflector Staff 2, 3, 4; Dormitory president 1; Cheer Leader 2; Future Teachers of America 4; Business Club 4, secretary 4.

Dorothy May Strickler

B. S. in Education
Marion, Indiana
Major: Elementary Education
Girl's Mission Guild 1, 2, 3, 4; Future Teachers of America 2, 3, 4, president 4; Choir 2, 3, 4; Orchestra 4; Violin Quartet 1, 2, 3.

Harold Eugene Schutz

B. S. in Education
North Manchester, Indiana
Major: Health and Physical Education

"C" Association 1, 2, 3, 4, secretary 3; Football 1, 2, 3, 4.

Claude Louis Sommers

B. S. in Education
Brownstown, Indiana
Major: Mathematics
"C" Association 1, 2, 3, 4; Basketball 1; Golf 3, 4.

Emma Pauline Strickler

A. B.
Marion, Indiana
Major: English
Philaethea 1, 2, 3, 4; Choir 2, 3, 4; Girl's Mission Guild 1, 2, 3, 4; English Club 2, 3, 4; Pan Linguists 2, 3, 4; S. C. A. 4.

***Albert Slezak**

A. B.
Derry, Pennsylvania
Major: History
Philomusea 1, 2; C. M. A. 1, 2; S. C. A. 4.

Howard Charles Stein

A. B.
Indianapolis, Indiana
Major: History

Albert Henry Theil

A. B.
Indianapolis, Indiana
Major: History
Future Teachers of America 3, 4; Student Council 4, president 4; Zetagaethea 4; International Relations Club 4; Who's Who in American Universities and Colleges 4.

Rebecca Fern Sloan

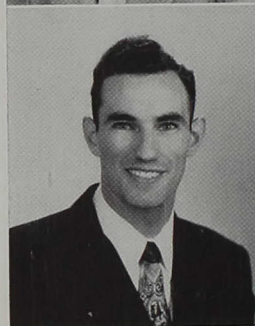
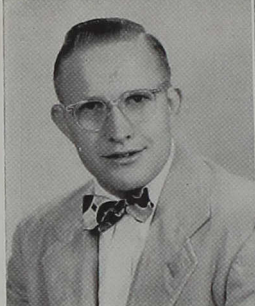
A. B.
Kokomo, Indiana
Major: English
Philaethea 1, 2, 3, 4, president 4; English Club 4; W. A. A. 1, 2, 3, 4; Girl's Mission Guild 3, 4; Student Council 3, 4; Future Teachers of America 4; Choir 1, 2, 3, 4; Mixed Quartet 2; S. C. A. 4; Oracle Staff 3; Queen's Court 4.

William Clyde Stelzer

B. S. in Education
Cleveland, Ohio
Major: Art.
Football 1, 2, 3; Choir 2; Art Club 3, 4, treasurer 3; Future Teachers of America 4; Oracle Staff 2; Reflector Staff 3; Zetagaethea 1, 2, 3, 4, president 4.

Emilee Ann Toliver

A. B.
Indianapolis, Indiana
Major: English
English Club 2, 3, 4; Philaethea 1, 2, 3, 4, critic 4, president 4; Pan Linguists 3, 4, vice-president 4; Future Teachers of America 3, 4; Choir 1; Phi Alpha Epsilon 1; Student Council 4; Epsilon Sigma Alpha 4.

**John William Trinkle**

B. S. in Business Administration
 Danville, Illinois
 Major: Business Administration
 International Relations Club
 1, 4; Business Club 4; Student
 Council 4; Future
 Teachers of America 3, 4;
 Alpha Psi Omega 4.

Milton Earl Truesdale

B. S. in Education
 Ithaca, Wisconsin
 Major: Physical Education
 "C" Association 4; Student
 manager 1, 2, 3, 4; Future
 Teachers of America 4.

Howard Dwight Turley

B. S. in Education
 Indianapolis, Indiana
 Major: Elementary Education

Helen Marie Uncapher

A. B.
 Warsaw, Indiana
 Major: Biology
 Reflector Staff 1, 2, 3, 4,
 editor 3; Cheer Leader 2,
 3, 4; Choir 1, 2, 3, 4;
 Women's "C" Association
 3, 4; Women's Athletic
 Association 2, 3, 4; Thea-
 callosia 1, 2, 3, 4; Future
 Teachers of America 4;
 Booster Club 1; Band 1,
 2, 3, 4; Alpha Psi Omega
 4.

Marion Sumnar Wells

B. S. in Education
 Battle Ground, Indiana
 Major: English
 Choir 2, 3, 4; Future
 Teachers of America 2, 3,
 4; Alpha Psi Omega 4;
 Philomusea 4; English Club
 4.

Emma Lou Wilson

A. B.
 Wabash, Indiana
 Major: English
 Women's Athletic Associa-
 tion 1, 2, 3, 4; Choir 1,
 2, 3, 4; Girl's Mission
 Guild 3, 4; Future Teach-
 ers of America 4; Philale-
 thea 1, 2, 3, 4; Booster
 Club 2; Student Council
 2.

Edna Dorothy Wise

A. B.
 Rochester, Minnesota
 Major: English
 Girl's Mission Guild 1, 2,
 3, 4, president 2, 3; Pan
 Linguists 2, 3; Philalethea
 3, 4; English Club 3, 4,
 president 4; Future Teach-
 ers of America 4; S. C. A.
 4, secretary 4; Epsilon
 Sigma Alpha 4.

Wendell Leo Witsman

B. S. in Education
 Kingman, Indiana
 Major: Physical Education
 Future Teachers of Amer-
 ica 2, 3, 4; Cross Country
 1, 3; Track 1.

Ted R. Woodard

A. B.
 Cairo, Illinois
 Major: History
 Band 2, 3; C. M. A. 4.

SENIORS NOT PICTURED

Verna Mae Banks

B. S.
Indianapolis, Indiana
Majors:

Stanley Cox

B. S. in Education
Bellport, New York
Majors: Physical Education
and History
"C" Association 1, 2, 3, 4;
Baseball 1; Football 1;
Basketball 1.

Richard Lee Eisinger

A. B.
Kokomo, Indiana
Major: History
Philomusea 2, 3; C. M. A.
1, 2, 3; Band 2, 3.

John Eugene Griffith

A. B.
Osborn, Ohio
Majors: History and Speech
C. M. A. 1, 2, 3; Student
Council 3, 4; Alpha Psi
Omega 1, 2, 3, 4, presi-
dent 4; Booster Club 2;
International Relations
Club 4; Pan-Linguist Club
4.

Paul A. Hottell

B. S. in Education
Floyd Knobs, Indiana
Majors: Elementary Education

James David Kindred

B. S. in Education
Boonville, Indiana
Major: Music
Band 1, 2, 3, 4; Music
Club 1, 2, 3, 4; Student
Council 2; Future Teach-
ers of America 2, 3, 4;
Orchestra 4; Choir 2; All-
State College Band 4.

Theresa Mae Lyles

A. B.
Indianapolis, Indiana
Majors: English and History

Clifford Moore

A. B.
Derry, Pennsylvania
Majors: History and Religion

George Arthur Spyres

B. S. in Education
Canton, Illinois
Majors: Music
Band 1, 2, 3, 4; Choir 4;
Music Club 2, 3, 4; Future
Teachers of America 2, 3,
4.

David Edward Stumph

B. S. in Education
Indianapolis, Indiana
Majors: Physical Education
and History
Golf 3, 4.

Edwin Leon Tryon

A. B.
Morgantown, Indiana
Majors: History and English
International Relations
Club 4; Epsilon Sigma
Alpha 4.

William Waddle

A. B.
Indianapolis, Indiana
Major: English
Golf 4.

The Moon is down . . . Vacation . . . Yah, rah . . . That look in his eye . . . Soft shoulder? . . . Gene's got his hands full . . . Only seniors . . . Ipana smile . . . Musical maidens . . . First scent of spring . . . Cold outside . . . Dead or Alive? . . . A Brooks in our front yard.



Juniors



SEATED: Verda Spangler, secretary; Miss Bunting, sponsor; Elaine FitzGerald, president.

STANDING: Elwood McBride, vice-president; Joseph Miles, treasurer.

Lack of money is a problem for most people and the Junior Class this year was no exception. Confronting the class at the beginning of the year was the perplexing problem of raising enough funds to provide a banquet for the seniors. As a step toward the solving of this problem a carnival was sponsored by the class in April. This provided each campus organization with the opportunity of making money. The Carnival was successful financially and socially.

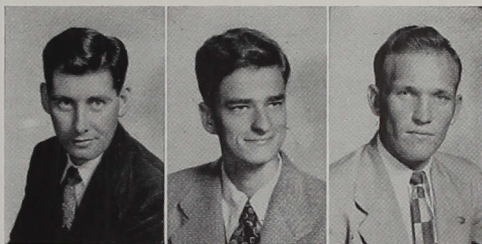
Third time is charm—and this proved true for the Juniors. An effort was made each year for three years to capture the Homecoming Day float award and was finally successful this year with the "Franklinfurter."

The Junior-Senior Banquet, held at the Democratic Club, put a successful ending to the activities of the year.

Philip Olin Allen

Jack Paul Andrews

Everett Keith Beasley



Gertrude Ann Beasley

Juanita Beeman

Barbara Faith Bettag



Doris Jane Brooks

Keith Allen Brown

Verne Russell Chandler



Opal Kathleen Chappelle

Ruth Lucille Clausius

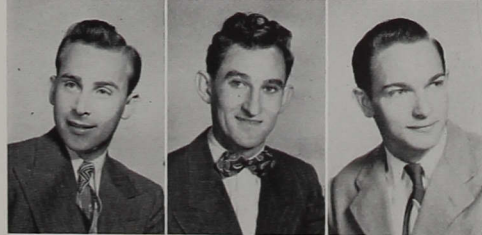
Russell Fay Coats



*Hubert Osborne Cooper

William Henry Dazey

Donald Maurice Dow



Marie Jacqueline Duffey

William Richard Eaton

David Paul Elliott



*Should be classified as a senior.



Willa Elizabeth Esters
Eva Gertrude Fields
James Kenneth Fisher



Elaine Elizabeth FitzGerald
Harry Juan Harrison
Patricia Mae Hilficker



Ivan Reed Hobson
Frederick D. John
Charles Jones, Jr.



We'don Ray Kincaide
James Albert Kindig
Richard Eugene Kistler



Joyce Iona Knight
Norman Leon Landis
James Lowell Mansfield

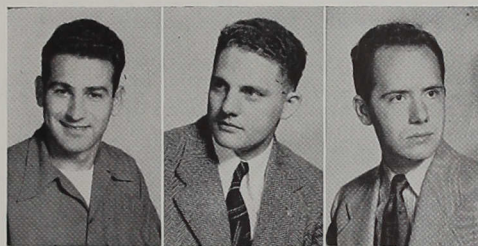


Henry Emilio Martinez
Elwood Leon McBride
Harold William McPherson

Frank A. Mike

Verlin Eugene Mikesell

Joseph Paul Miles



Frieda Esther Myers

Charles Wesley Peckham

William Leroy Peterson



Kathleen Celeste Polter

Joyce Mae Porter

Robert Porter



Betty Lou Ratliff

Melissa Elizabeth Rider

Rose Ann Rider



Wendell Howard Roberts

Gerald Eugene Schroder

Wayne Haines Smith



Verda Louise Spangler

Donald Llyod Stevenson

Phyllis Anne Stuck





Donald Elwin Sunwalt
Dwight Walker Swails
Dwight Taylor



Rollin J. Tindall
Charles Wayne Tippin
Bradley Dean Warren



Eugene Merle Westley
Arthur Boyd Winn
George Leonard Wood

Stratton story... Dog days... Kidding... Is that me?... Cutie... Merry Sixes... Bowtie and bat... Choir quintet... Chummy... Music, maestro, please... Oh, you kid... Smile at the birdie... What a tan!



Sophomores



SEATED: Miss Winslow, sponsor; Betty Sackmire, secretary; Floyd Mevis, president.

STANDING: Charles Stotts, Vice-president; Leona Bottrell, secretary.

The Sophomores, as typically expected, started their second year of college in a very business-like manner. For a Homecoming Float they, to let it be known that they were now upperclassmen, rigged up a P. A. system on an automobile.

Having lost the Tug-of-war as Freshmen, the Sophomores repeated that performance again this year. But this did not drown their spirits, for they continued on through the year with a vigorous program of activities. They participated in the stunt night program with a performance patterned after the Dixie Four, had a broom-ball game with the freshmen, sponsored a Nickelodeon for a dime at the Junior Class Carnival, and elected Robert DeNoon for next year's *Oracle* Chief.



Nancy Carolyn Abney
Loren Ellis Adamson
Donald Ralph Adkins
Russell Dean Albert



Raymond Lee Alexander
Marian Ruth Annis
Meredith Richard Armstrong
Rosemary Arndt



Verna Mae Banks
Thomas Edward Barnes
Eloise Marie Bilby
Leona May Bottrell



Leland Landram Brett
Billy Dean Brown
Clara Rosemary Brown
Scott Elwood Brown



Charles Richard Bugbee
Donald Carl Bulthaup
Hilda Norine Campbell
Rose Marie Carpenter



Keith Edward Chrisman
Mary Elizabeth Colbert
Virginia Coldren
Gordon Leroy Cole

Richard Morton Crowe

Robert James DeNoon

Rorrest LaVerne Farris

Lionel Kenneth Gouty

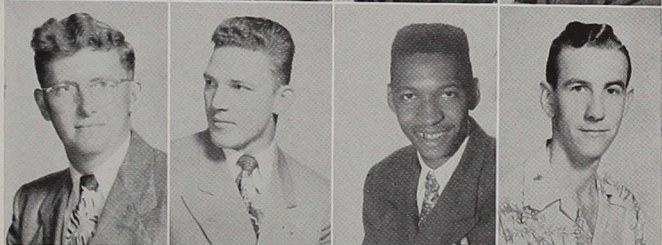


*Carl Edward Hawkins

*Robert Milton Harvey

Augustus Higgins

Jesse Hilgert, Jr.



Bruce Hilton

Harry Dean Iunghuhn

David Richard Johnson

Wilmer Dea Lawrence



Betty Irene Lunsford

Charles Rodman Mather

Floyd William Mevis

Robert Eugene Miller



Charlene Yvonne Mills

Max Richard Moore

Shirley Ann Moren

Judith Ellen Morgan



Charles Harold Morris

Robert E. Newnum

Grace Doris O'Reilly

*Verne Arthur Overton, Jr.

*Should be classified as a junior





Roger Thomas Painter
Leon V. Patterson
Ottie Ellis Plumley
Anthony S. Priola



Ophelia Radford
Donald Eugene Robinson
Dale Edison Robinson
Maybelle Runk



Betty Jean Sackmire
Renaldo Anthony Savenelli
Joan Louise Senff
Lyle Leavitt Sheeley



Wayne Sanford Shipley
David Lee Smith
Laveta May Smith
Richard Edwin Smith



Allen C. Snead
Catherine Ann Sommers
Charles Keith Sprague
Thomas Hill Stewart



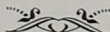
Martha June Stone
Charles Harrison Stotts
Roy Harvey Turley
Ward DeHart Vass



Richard Arthur Warren
 Rawlins Irvin Whitaker
 Genevieve Joan Yant
 James William Young



Virginia Ann Young



SOPHOMORES NOT PICTURED

Richard Leroy Anderson

Robert Gene Kelsay

Jack Eugene Bowman

Mary Elizabeth Merritt

Iris Lacey Brown

Robert Dennison Porter

Marion Gene Burleson

Herbert Winton Potts

Jack Edward Colescott

Harold Clinton Wright

Walter Webster Dininger



JUNIORS NOT PICTURED

Bryce Glen Armstrong

Walter Wesley Bishop

Martha Alice Junken

Robert Lee Robison

Jay Allen Taylor

Thelma Pauline Washburn

Freshmen



SEATED: Margaret Ewert, vice-president, Shirley Thomas, secretary, and Lloyd Woodmansee, president.

STANDING: Arthur Bright, Treasurer, Professor Kent, sponsor.

The seemingly shy, quiet freshmen who entered the halls of I. C. C. this past fall brought with them loads of surprises. The freshman class soon became an indispensable part of the school. The boys and girls found their places in all areas of college life—athletics, religion, and social. The Tug-of-war, which was captured by the sophomores the previous year, was won by the bang-bang freshmen this past fall.

The freshmen elected officers after a vigorous, well-organized campaign by various parties. They gave an April Fool's Party for the members of their class.

James Wilson Adams

Marlene Elizabeth Aichorn

Phyllis Ann Albright

John Knight Alexander

Robert Lee Alexander

Ronald Eugene Alexander

Ruth Esther Anderson

James Andrews

Marilyn Ann Axel

Ralph William Baker

Joanne Ethel Baldwin

Lloyd Carman Barden

Kenneth F. Barrick

*Paul Prentice Bateman

William David Bemenderfer

Earl William Bickel

Lillian Bernice Bohannon

Maurice Charles Bonecutter

*Celia Jeannette Boone

Mary Esther Brame

Arthur Dean Bright

Norman Dean Bright

Beverly June Burkhardt

*Donald George Burkhardt

Betty Elnora Butler

Eldon Eugene Campbell

Alvin Byron Carey

Charles LaVerl Cook

Billy A. Crowe

Lorraine Lucille Cummings

Starlen W. Daugherty

Paul Harold Davis





Joanne Ruth Dennis
Edward Gene Dietz
Joan Evelyn Dinkel
William Robert Dixon



Mary Ella Echols
Melba Louise Edwards
Herman Armstrong Emmert
Margaret May Ewert



Edna Mae Farnsley
Merlin Lee Featherstone
Betty Lou Fleshman
Harold Elmer Francis



Jack Sullivan Fuller
Arville L. Funk
*Bobby Gayle Fyffe
Wilbur Galbreath



Andrew R. Gantenbein
Betty Jean Gibbons
Rose Marie Glidewell
William L. Greathouse



Alton Lee Hawkins
Richard James Hiestand
Joanne Ruth Hilficker
David Charles Hilton



Ethel Anna Hobson
Ralph Eugene Horn
Joan Maxine Hostetler
*John Henry Hupp



Joe Henry Hurrle
Robert James Ice
Robert Gordon Jaus
Charles W. Johnson

Walter Clay Johnson

Walter Frederick Johnson

David Hale Jones

Joanne Ruth Jump

Richard James Keller

Vincent J. Klos

Darlene Joyce Knobloch

*Ruth Anna Kopp

Darrell Maurice Landis

Herschell Clyde Landreth

Charles Ray Lane

Vera Kathryn Langford

Henry Earl Leistikow

Wanda Mae Lewellen

Harlan Cloid Long

James Ray Lucas

Jack William McKinsey

Yvonne Pearl McMurray

Thomas Jay Martin

George Albert Miller

Bill Allen Mills

Pearly Mae Montgomery

Russell Lee Moriarty

Audrey Jane Ogan

Jack Laurin Owen

Lowell Painter

William Eugene Pickard

Harold Pitts

Bruce Collison Porter

John Dayton Porter

Glenn Raymond Price

Leroy Ray Rapp





Mary Margaret Ray
John Benjamin Reed
Peggy Ann Reeves
Viola Jean Reifeis



Edith Lorraine Reinhardt
Elinor Ann Roberson
Charles David Robinson
Billy Lavon Rogers



Herbert Earl Rosemeyer
*George Franklin Rosselot
Roger Lewis Rouch
Charles Aldrich Russell



Esther Susanna Ruybalid
Dorothy Marie Schober
Marjorie Marie Schrader
John Edward Sharp



Doris Sims
John Edgar Sinclair
Joan Delight Small
Charlottee Lee Smith



Jacqueline Ann Smith
Jess Porter Smither
*Richard Ellsworth Smitley
William Joseph Snider



Arnold William Spilly
Gerald Dean Spitzer
Walter Carl Stahlhut
Dorothy May Steele



Helen Ruth Stephenson
Bob Jerome Stepro
Joyce Rose Stone
Elbert Ralph Strain

Ruth Luella Sunwalt

Warren Howard Tatter

Tom W. Terrell

Richard Kenneth Theil

Shirley Ann Thomas

Vera Anne Thordsen

John A. Tompkins

Martin Moser Truesdale

Carolyn June Vannatta

Francis E. Wetzel

Robert Lee Wheeler

Joseph Clark White

Lois Elinor Williams

John Thomas Windell

Bobby Clayton Wood

Lloyd Eldon Woodmansee

James Emmett Wren

*John Samuel Yeftich

Tom Samuel Yeftich

*Dean Leon Zike

*Should be classified as a sophomore



FRESHMEN NOT PICTURED

Nancy Jane Beaman

Robert Floyd Carpenter

Paul Chambers, Jr.

James Robert East

Donna Mae Fisher

Doris Edith Harden

Oscar Lee Harper

Charles Richard Hyde

Suzanne Miller

John Donald Preston

Earl F. Stegemeller

Eugene R. Whitten

Daisy, dazey....In form....Roommates....Cute frosh....What formals....But, grandma, what long legs you have....Who got rooked?....High water?....Wow....Things are looking up.... Don't look now but your shirt tail is showing....O-oh!....Dolly doesn't live there anymore.



UNCLASSIFIED NOT PICTURED

Norman Earl Barnhart

Charles Wayne Majors

Paul H. Childers

James Henry Maxey

Rosalie Agger Cohen

Jack William Plake

Bonnie Myers Harvey

Jim Reffett

Eleanor H. Galey

William H. Riffle

Edward Vincent Gillaspay

John Aaron Tompkins

Harry Albert McGuff

Virgil Marion Webster

Unclassified

David Abel

Richard Leroy Anderson

Howard Brandyberry

James Earl Brock

Ralph Clarence Brown

Helen Lucille Butler

Herbert J. Buwalda

Phyllis Ann Huber

Armour John Keller

Joyce Leichy

Crystal Belle Livengood

*Theresa Mae Lyles

Charlene Mills

Robert L. Miller

G. Albert Murphy

Mildred Mae Myers

James Payne

Edward Lowell Pruitt

Byron Reed

David Lowell Saunders

Mary Karstedt Shambaugh

David Richard Shaw

Carl Richard Smith

Francis Evelyn Stohler

Ronald E. Strachan

Howard Edison Strong

Ernest R. Stubbs

Doris Torbett Vass

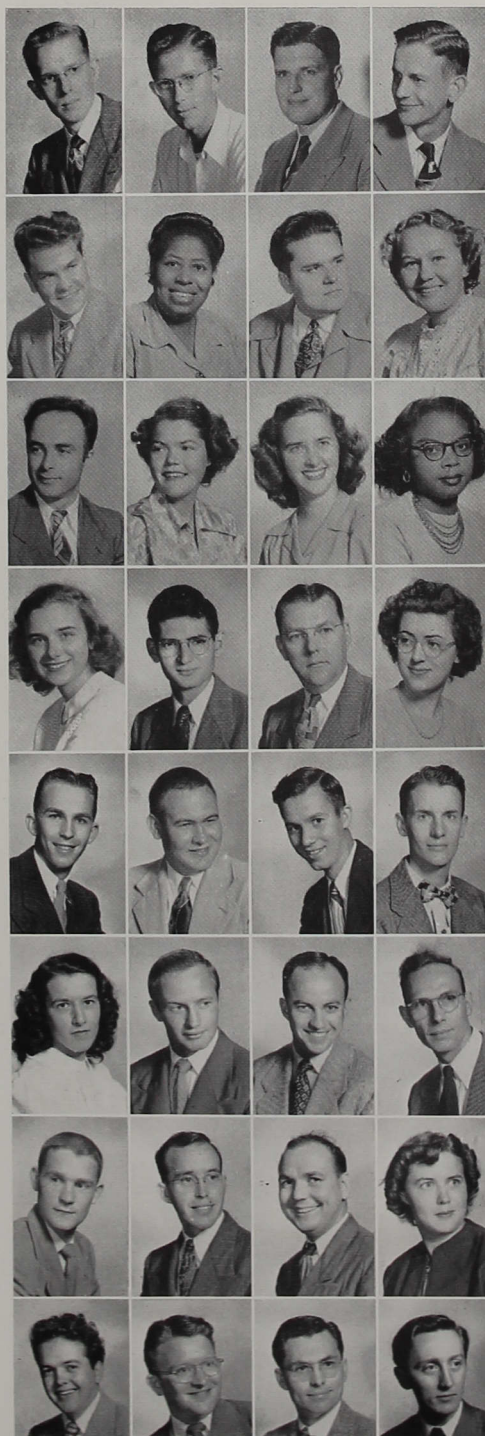
*William Waddle

Ross Emery Wallace

James I. Wheeler

Charles Steven Zipoff

*Should be classified with the seniors.



One and one makes -- dos...zwei...duex...due...duo...two -- in any man's language

Farmer takes a wife.....Liz 'n Georgie..... While you and I are young, Maggie..... Look at me, honey.. 'Lice and Lad..... For'evans' 'n ever..... That "old" look..... Huggin' and chalkin..... Give me your answer true... Flash-bulb and grease-paint..... Frosh prefer juniors.....



KINGAN & CO.



QUALITY MEATS
and MEAT PRODUCTS
Since 1845

For the Best in Meats . . .
Ask for Kingan's

General Offices
INDIANAPOLIS, INDIANA

CENTRAL PUBLISHING COMPANY

401 N. Noble — Indianapolis, Ind.

IF IT'S PRINTING YOU NEED

GIVE US A CALL

Phone IM. 4505

THIS BOOK PRINTED BY



SEYMOUR, INDIANA

HORNADAY MILK CO., INC.

RICH - QUALITY
MILK

MA. 5335

1447 West Market



FINE PORTRAITS FOR FAMILY AND
GRADUATES

Quantity Portraits for records and files
Group . . . Views . . . Interiors
. . . Exteriors . . . Weddings, both
formal and candid

Anything Photographic . . .
Anytime . . . Anywhere

WILLIAM WEBER & SONS

Wholesale Dealer In
FINE MEATS

GA 4647 Beech Grove, Indiana

THE WADLEY COMPANY

POULTRY — BUTTER — EGGS
Wholesale Dealer

GA 2431 824 East Troy

THE TRI-ART PRESS, INC.

PRINTERS — PUBLISHERS

We Print The Reflector

L. W. BRUMIT, President
A. O. KOETT, Secretary-Treasurer

FR 0422 225 N. New Jersey St.

BREMER BROTHERS

PLUMBING AND HEATING

1310 South Sherman Drive
Indianapolis, Indiana

BL 1539 OR IR 1456

CHAS. E. ORME, INC.

5505 South Meridian

FLOOR COVERING — APPLIANCES
HARDWARE

ID 1471

F. J. SCHUSTER COAL CO.

COAL — COKE — BUILDING MATERIALS

C. W. BRAUGHTON, Manager

GA 2431 824 East Troy

By Elsie, the Borden Cow



Enjoy Good Ice Cream in Your Own Home!

Hand-dipped, or ready packed.
There's a friendly Borden dealer
near you. Visit him . . . soon!

**"If it's Borden's —
it's got to be good!"**

Compliments of

BRUNSON BAKING COMPANY

GA 7400

2835 Shelby Street

Adding Machine Service & Sales

ADDING

BOOKKEEPING

CALCULATING

TYPEWRITER

MACHINES

SALES — SERVICE — RENTALS

215 South Meridian Street

L. I. Bland

MA 5346

MEET YOUR FRIENDS

and

SUPPLY ALL YOUR NEEDS

AT

ROHEL'S PHARMACY

YOUR

PHARMACIST ACROSS THE CAMPUS

4001 Shelby at Hanna Ave.

MOONEY-MUELLER-WARD COMPANY

WHOLESALE DRUGGISTS
SUNDRIES — FOUNTAINS — FIXTURES

LI 1531

501 Madison Avenue

SPECIAL SPORTS SERVICE

Fishing

Golf

Tennis

Baseball

Jackets — Sweaters

Jantezen — Bathing Suits

Smith-Hassler Company, Inc.

219-21 Massachusetts Avenue

Indianapolis, Indiana

THE ENOS COAL MINING CO.

1405 Merchants Bank

ENOS and ENOCO COAL

Indiana's Finest

"Quality carries on"



DRINK

Coca-Cola 5¢

REG. U.S. PAT. OFF.

Compliments of
J. C. PERRY & CO.
WHOLESALE FOODS

DUNCAN'S REGAL MARKET

Quality Meats and Groceries

ID 1692 4011 Shelby

MARIEN HARDWARE COMPANY

Hardware — Paints — Plumbing
And Electrical Supplies

GA 7551 3604 Madison Ave.

MADISON AVE. FLOWER SHOP

2457 Madison Avenue

GA 4447 Indianapolis, Ind.

"SAY IT WITH FLOWERS"

KINMAN GARAGE

COMPLETE AUTO SERVICE

GA 0043 Shelby at Troy
Indianapolis, Indiana

HERBERT DAUM

Power Lawn Mowers — Hand Garden Tractors

FR 0817

47-49 Virginia Ave. Indianapolis, Ind.

Compliments of

HAROLD JAHNKE

MUTUAL CHINA COMPANY

128-132 South Meridian Street

China — Glass — Silver — Gift Items

Hotel and Restaurant Supplies

Sanders Cleaners & Shirt Laundry

Quality work — Quick service

Cash and Carry — Pick-up and Delivery

ID 0484 3709 Madison Ave.

SCHOOLER'S HARDWARE

Paints — Tools — Glass

Electric and Plumbing Supplies

Sporting Goods — Housewares

GA 2400 Shelby at Hanna

NU-WAY PRODUCTS

SOAPS — STARCH — SOFTENER

801 East 11th St. Indianapolis, Ind.

Compliments of

GEORGE BUESCHER & SON

503 East Southern Ave.

The Beauty of our Business is Flowers

GA 2457 GA 2458

GLADYS ALWES MUSIC SHOPPE
MUSIC FOR ALL INSTRUMENTS

Standard Sheet Music — Octavo Music
Violin Accessories

FR 9501 120 Pennsylvania St.
Mail Orders Given Prompt Attention

KO-WE-BA

CANNED FOODS — COFFEE

Kothe Wells and Bauer Company, Inc.

Indianapolis 9, Indiana

FARRELL-ARGAST ELECTRICAL CO.

Meridian and Maryland Streets

RI 6321 Indianapolis, Ind.

George March

MARCH-COLVIN INC.

MODERN RESTAURANT EQUIPMENT

421 South Meridian Street

LI 1583 Indianapolis 25, Indiana

SOUTHERN CIRCLE DRIVE-IN

GOOD FOOD AND DRINKS

Just South of Hanna on Highway 31

Compliments of

A FRIEND

From the Home of

HOOSIER POET

FINER FOODS

M. O'CONNOR & CO.

HI-WAY CORNER

TUNE UP — BRAKE SERVICE

Experienced Mechanics on Duty

MOTOR OVERHAUL

Tires — Batteries — Parts

GA 0945

4001 Madison

"It's Time to Dine"

MORGAN'S

Corner of Madison, Brill and Southern

KELLEY'S BARBER & BEAUTY SHOP

Quality Service and Reasonable Prices

UNIVERSITY HEIGHTS

GA 1094

4005 Shelby Street

Compliments of

JOHN W. DEEVER, M. D.

TA 5466

424 W. 17th Street

COLLEGE INN

Short Orders and Sandwiches

Steak and Chicken Dinners

MODERATE PRICES

SANDWICHES AND CHILI TO TAKE OUT

Informal Photos in This Book

By

LARRY GEORGE

Indiana Central College Photographer



Autographs

Autographs



INDIANA CENTRAL COLLEGE

