

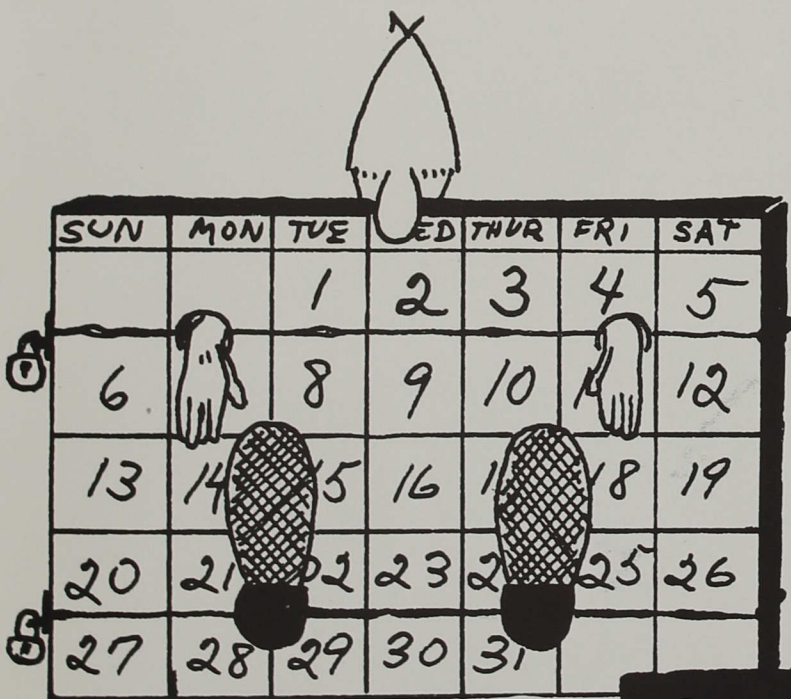
THE 1951

Oracle

**INDIANA CENTRAL
COLLEGE
LIBRARY**

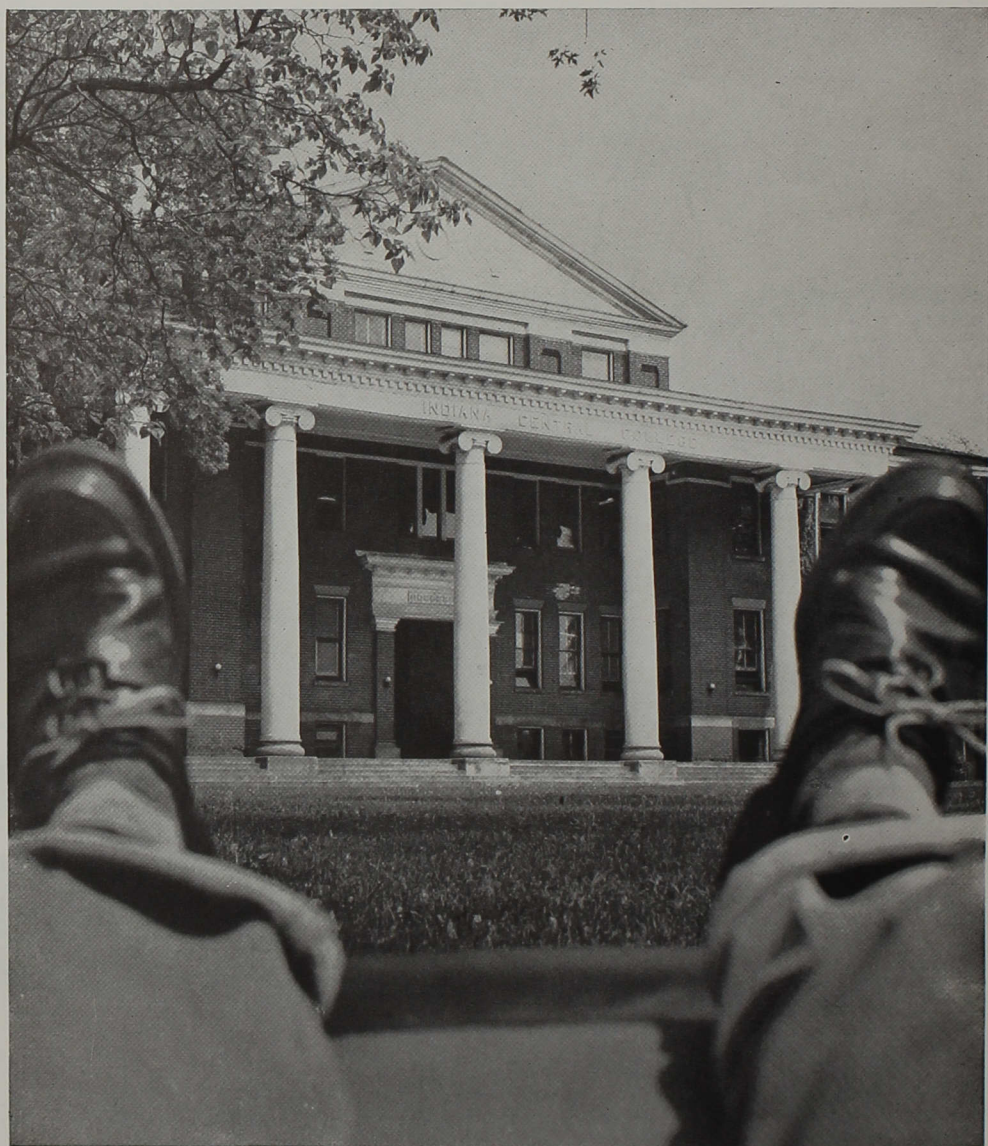


INDIANAPOLIS



THE ORACLE 1951

Through the year in the shoes of college people . . .



A SOLE VIEW OF THE ADMINISTRATION BUILDING

No place for loafers—we're tied up in the business of learning.

"We come from the North, we come from the South, we come from the East and West..."

This has been the trend as our song indicates, for students have come from far and wide to receive higher training in our small Christian college. We are proud of I. C. C. as it attempts to meet the students' needs spiritually, educationally, physically, and socially.



Indiana Central College is affiliated with the Evangelical United Brethren Church the same as seven other colleges. Martha Stone is wearing the "C" for Central. The other colleges represented are Westmar, North Central, York, Albright, Lebanon Valley, Shenandoah, and Otterbein.

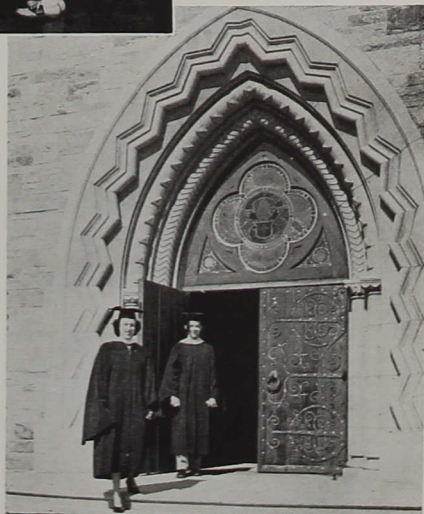


As recognition for good wholesome sportsmanship, Verne Chandler received the Walter Brenneman award, named for an outstanding Centralite athlete who was killed in World War II.

In the main hall of the Administration Building, Doris Davis and Marilyn Axel watch for the coming social events which are posted on the Student Christian Association Bulletin Board.

Graduating seniors Rollin Tindall and Frieda Myers have behind them training from an institution that emphasizes religion and education.

Indiana Central stresses the value of these phases of life working together to prepare one for a rich and abundant life and to serve their world and community.



2-17-64 Public Relations Office



WILMORE HALL

BUXTON HALL

MEN'S HALL

GYMNASIUM



In Service

World conflicts have again necessitated a call to military duty by the men of our nation. From the first semester student body, these men have entered the armed services as reserves or enlisted men.

James Nicolas Anderson

Thomas Edward Barnes

Andrew Keith Damon

John William Davis

Jack Sullivan Fuller

Elmer Curtis Gates

William Leroy Gesell

Richard James Hiestand

William Robert Hilycord

Robert Dale Hotz

Walter Frederick Johnson

Ruth Anna Kopp

Wilmer Dea Lawrence

Elwood McBride

Lowell Painter

Chester James Payne

Walter L. Pritchard

Roger Rouch

Fred Thayer Jr.

Chester E. Wiese

Lee Anthony Wilcoxon

John Samuel Yeftich

In Memoriam

Tragedy struck on the night of March 20, 1951 when a student and a former student were killed in a train-auto crash. We wish to dedicate this part of the book to them, for we are indeed filled with sorrow and we miss them among us. To the parents of Karl Stephenson and Larry Gillum, we extend our sincere sympathy.



Karl Stephenson



Larry Gillum

An Introduction . . .

You will meet him as you turn the pages of this book. He is a small part of it and a part of its name. We called him Orie.

In like manner, several members of the Junior Class have been a part of this book, and now we present to you the 1951 Oracle.



ADMINISTRATION.....	page 7
CLASSES.....	page 13
ALL SCHOOL LIFE.....	page 37
SPORTS.....	page 63
Business Manager	Herbert Potts
Assistant Editor	Joyce Liechty
Photographer	Floyd Mevis
Class Editor	Rosemary Arndt
Sports Editor	Roy Turley
Snaps Editor	Virginia Young
Artist	Bruce Hilton

Others: Daisy Welsh, Gordon Cole, Betty Sackmire, Russell Albert, Dale Robinson, Charles Bugbee, Lois Smith, Harry Smith, Hilda Campbell, Mildred Myers, Judy Morgan, Robert Miller, Lionel Gouty.

Thanking you for your jobs well done—

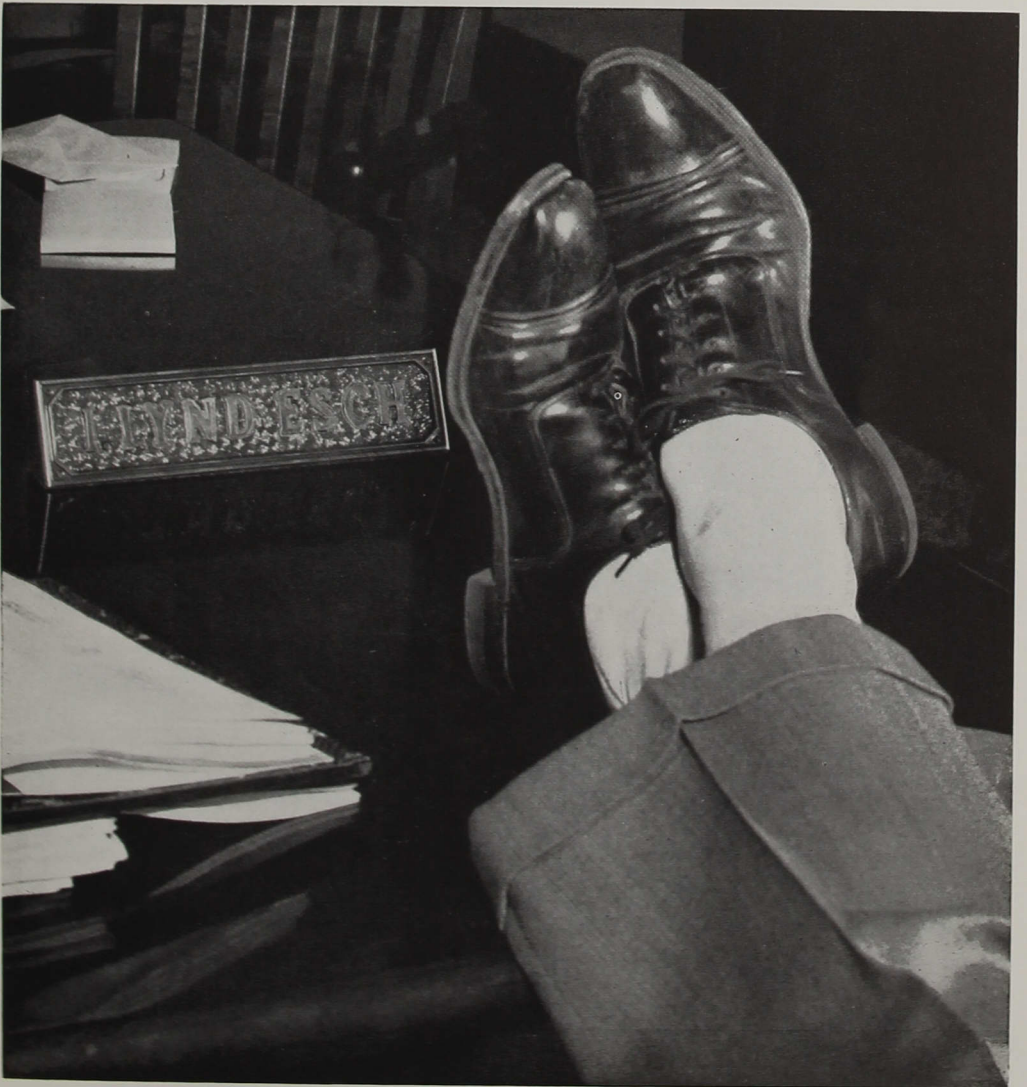
Editor, Shirley Moren

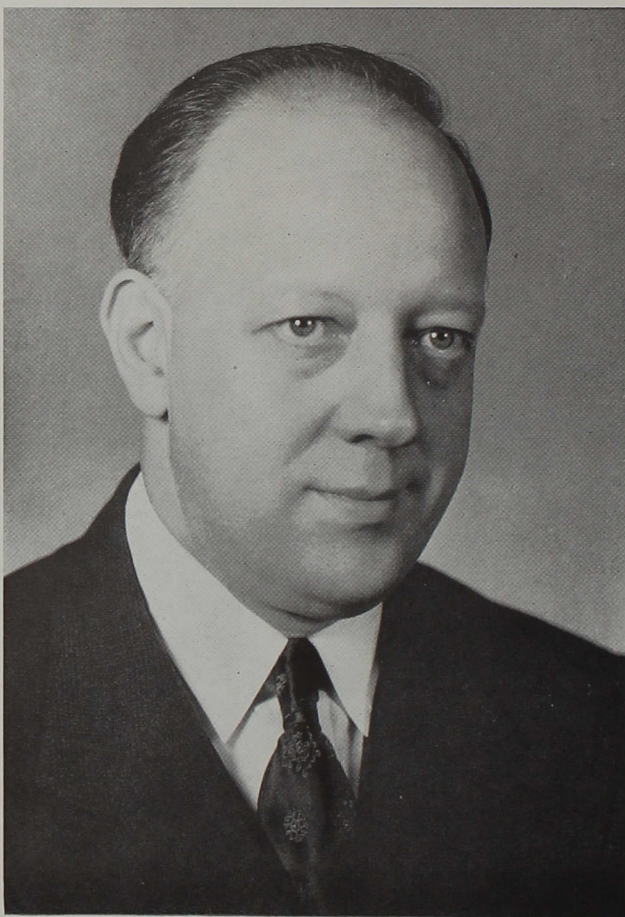


Administration

President Esch of I. C. C.

Guides our loyal faculty.





Our President

Most of us would not choose to be in the shoes of President I. Lynd Esch, but he is an outstanding leader of both faculty and students. His steps are making a lasting impression toward the improvement of the school and to "make the people hear the fame of dear old I. C. C."

As a leader, counselor, and friend, President Esch is a likeable man—a jolly good fellow.



SIBYL WEAVER
A. B., M. A.
Professor of
English,
1918



WILLIAM P. MORGAN
A. B., M. A., Ph. D.
Professor of
Biology,
1919



VIRGINIA CRAVENS
A. B., M. A.
Assistant Professor
of English (Retired),
1927



ANNA DALE KEK
A. B., M. A., Ph. D.
Professor of
Languages,
1930



EVAN R. KEK
A. B., M. A.
Assistant Professor
of History and
Business Manager,
1930



LOIS TAYLOR FOUTS
A. B., M. S. in Ed.
Assistant Professor
of Physical Education
and English, 1932



ROY V. DAVIS
A. B., M. A.
Assistant
Professor of
Education,
1936



MARY HUEY
B. S., in H. E.,
M. S. in H. E.
Assistant Professor
of Home Economics,
1938



JAMES A. WEBER
A. B., B. D., M. S.
Associate Professor
of Bible and
Religion,
1939



ALLEN BOND KELLOGG
A. B., M. A., Ph. D.
Professor of English
and Academic Dean,
1945



RUSSEL S. MERKEL
Ed. B., M. S. in
Ed., Ed. D.
Professor of
Education,
1945



EDNA MILLER
A. B., B. S. in
L. S., M. A.
Librarian,
1946



KENNETH J. SIDEBOTTOM
B. S.
Instructor in
Mathematics,
1946



ROBERT L. KENT
B. S., M. S.
Assistant
Professor of
Botany,
1946



LOUISE HOPE
B. Mus.
Part-time
Instructor in
Music,
1946



ROBERT E. CRAMER
B. S., B. D., M. A.
Associate Professor
of Philosophy,
1947



ANGUS NICOSON
A. B.
Athletic Director
and Instructor in
Physical Education,
1947



KENNETH E. ST. CLAIR
A. B., M. A., Ph. D.
Professor of History
1947



ALLAN F. SCHIRMER
B. Mus., A. B.,
S. M. M.
Associate Professor
of Music,
1947



EUGENE T. UNDERWOOD
A. B., M. A.
Assistant Professor
of Languages,
1947



ELIZABETH HERT
A. B., M. S.
Assistant
Professor of
English,
1947



HARRIET E. EUNTING
A. B., B. S. in Ed.,
M. A.
Assistant Professor
of English,
1947



PAUL W. FIELEMEIER
B. S., M. S.
Assistant Professor
of Economics,
1947



CHARLES R. JOHNSON
A. B. in Journalism
Part-time
Instructor in
Journalism,
1948



JOHN E. HILL
A. B.
Instructor in
Speech,
1948



LEO S. MILLER
B. S., M. S.
Assistant
Professor of
Business
Administration,
1948



MABEL M. SHELQUIST
B. S., M. S.
Assistant Professor
of History and Dean
of Women,
1949



THOMAS F. HOULT
A. B., M. A.
Associate Professor of
Sociology,
1949



HUGO D. MARPLE
A. B., M. M., Ph.D.
Associate Professor
of Music,
1949



LOYD E. REDDIX
B. S.
Instructor in
Physics,
1949



W. EARL STONEBURNER
A. B., M. A., Ed. D.
Registrar and Director
of Admissions and
Dean of Men,
1949



ROBERT M. BROOKER
B. S., B. S. in Ed. M. S.
Professor of Ph.D.
Chemistry, 1950



GERALD BOYCE
B. S., M. S. A.
Assistant Professor
of Art,
1950



ALBERTA K. MILLER
A. B.
Instructor in Business
Administration,
1950



BIRTLE ALLEN
Superintendent
of Maintenance,
1941



RUTH HAGELSKAMP
B. S. in Bus.
Secretary,
Dept. of Public
Relations
1945



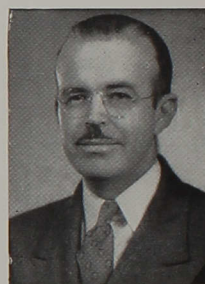
PEARL PUTNAM
Graduate of Central
Business College
Accountant,
1946



MAUDETHEL CULLOM
Assistant to the
Registrar,
1947



BETTY TURLEY
A. B.
Secretary to
the President, 1949



ROY H. TURLEY
A. B., B. D., D. D.
College Pastor,
1935



EILEEN POLLARD
A. B.
Assistant to the
Librarian,
1948



VIRGIL BRANER
Matron of Buxton
Hall,
1947



NELLE ENGLE
Matron of Men's
Hall,
1947



JOSEPH MILES
B. S. in Ed.
Secretary to
Business Manager,
1951

WALTER BARTKIEWICZ
Instructor in Physical
Education, 1950

IDA PEACHY
Dietician

MARY STELLE
Bookstore Manager,
1950

DAISY WELSH
R. N.
Student College
Nurse, 1950





Classes

Having comfort in class awhile

Demonstrated by Effie's style.



The Senior Class



SENIOR OFFICERS: Gene Mikesell, president; Trudy Fields, secretary; Richard Kisler, treasurer; Betty Lou Ratliff, vice president.

The Class of 1951 called themselves "the class that does things differently" and set out to prove their motto by having an autumn skip day instead of the usual spring hulabaloo. After a series of class meetings announced to discuss class garb, the seniors had planned their day and spent it at Mammoth Cave before nine weeks of the school year had elapsed.

A short time later they appeared at evening dinner in their particular class garb—tan cords worn by the boys and aqua dresses on the girls.

After winning the Stunt Night Award, the seniors went on to win the inter-class basketball tourney, becoming the first class to win the tourney four consecutive years.

Chosen for Epsilon Sigma Alpha, senior honor society, were Jacqueline Duffey, Patricia Hilficker, Albert Kindig, Richard Kistler, and Joyce Knight.

The month of May brought with it Senior Recognition Day and the beginning of senior privileges. Activities began to add up fast with the Junior-Senior Banquet, Faculty Womens' Club Breakfast, the end of classes, senior week, the Senior Play directed by Jim Mansfield, and then that grand finale—graduation.

Who's Who

On the principles of scholarship, leadership, and participation in educational and extra-curricular activities, these seniors gained recognition by Who's Who Among Students in American Universities and Colleges. Seven is the greatest number ever to be chosen from a senior class at I. C. C.

Marie Jacqueline Duffey
B. S. in Education
Indianapolis, Indiana
Major: Business Administration

S. C. A. Freshman Award 1;
Reflector 1, 2, 3, 4; Oracle
3; Philalethea 1, 2, 3, President
4; Alpha Psi Omega 2,
3, 4; Senior Play; F. T. A. 3;
International Relations Club
3; Dorm President 1; Student
Council 3, Representative
at Large 4; S. C. A. 1,
2, 3, 4; Phi Alpha Epsilon
2, 3, 4; Epsilon Sigma
Alpha 4; Business Club 3,
Campus Queen's Court, 4.

Eva Gertrude Fields
B. S. in Education
Westfield, Indiana
Major: Music

S. C. A. 1, 2, 3, 4; President
of Wilmore Hall 4; Secretary
Senior Class 4; Choir
1, 2, 3, 4; F. T. A. 3, 4;
Band 1, 2; Orchestra 3, 4;
String Quartet 1, 2; Girls'
Trio 3; Music Club 1, 2,
3, 4; Campus Queen's Court
4.

Frieda Esther Myers
B. S. in Education
Plainville, Indiana
Major: Music

Dorm Council 2; Booster
Club 1; Music Club 1, 2, 3,
4; Band 1, 2, 3, 4; Choir
2, 3; Orchestra 3, 4; MENC
2, 3, 4; F. T. A. 4.



Verne R. Chandler
A. B.
Indianapolis, Indiana
Major: History
"C" Association 1, 2, 3,
President 4; Football 1, 2,
3, 4; International Relations
Club 3, 4; Business Club 3,
4; Phi Alpha Epsilon 2, 3,
4; Student Council, Representative
at large 4; F. T. A. 3, 4.



David Paul Elliott
A. B.
New Albany, Indiana
Majors: Biology, Chemistry
Alpha Phi Omega, President
3, 4; Student Council
4; Zetagea 2, 3, 4; Sigma
Zeta 3, President 4; Alpha
Phi Omega Distinguished
Service Key 4.



Patricia Mae Hilficker
A. B.
Indianapolis, Indiana
Major: Biology
Philalethea 1, 2, 3, President
4; Pan-Linguist Club, President
3; Sigma Zeta 3, 4; Phi
Alpha Epsilon 2, 3, 4; Epsilon
Sigma Alpha 4.



Rose Ann Rider
B. S., in Education
Indianapolis, Indiana
Major: Music
Thecallosia 1, 2, 3, 4;
Music Club 1, 2, 3, 4;
Choir 1, 2, 3, 4; F. T. A. 3,
4; Campus Queen 4.

Bryce Glen Armstrong
A. B.
Turtle Lake, Wisconsin
Major: History

Philomusea 1, 2, 3, President 4; C. M. A. 1, 2, Vice president 3, 4; College Choir 2, 3.



Gertrude Ann Beasley
B. S. in Education
Odon, Indiana
Major: Home Economics

S. C. A. 1, 2, 3, 4; Vesta Club Vice President 2, President 3; F. T. A. 1, 2, 3, Vice President 4; Girls Mission Guild 1, 2; Philalethea 2, 3, 4; Dorm council 1.

Doris Jane Brooks
B. S. in Education
Greens Fork, Indiana
Major: Business Administration

Booster Club 1, 3, 4; Theacallosia 2, Critic 3, 4; Student Council 3; Business Club 3, 4; English Club 4; Orchestra 3; Oracle Staff 3.



Keith Allen Brown
B. S. in Education
Bedford, Indiana
Major: Elementary Education

Band 1, 2, 3, 4; Choir 2, 3; Zetageathea 2, Critic 3, 4; F. T. A. 3, 4; Brass Sextet 1; S. C. A. Representative at large 2; Dorm Council 1; Alpha Phi Omega 3, 4.

Opal Kathleen Chappelle
A. B.
Terre Haute, Indiana
Major: English

Alpha Psi Omega 4; Campus Queen Court 4; English Club 3, 4; Philalethea 1, 2, 3, 4; S. C. A. Secretary 4; Reflector 1, 3, 4; Senior Play; Dorm Council Vice President 4.



Ruth L. Clausius
B. S. in Education
Richland Center, Wisconsin
Major: Elementary Education
Girls' Mission Guild 1, 2, 3, 4; Philalethea 1, 2, Critic 3, 4; F. T. A. 1, 3, 4; Pan-linguists 1.

Russell F. Coats
B. S. in Education
Sterling, Illinois
Major: Business Administration

S. C. A., President 3; Philomusea 2, 3; Business Club 3; International Relations Club 3; Alpha Psi Omega 3, 4; Senior Class Play.



Rosalie Agger Cohen
A. B.
Indianapolis, Indiana
Major: Art

Richard M. Crowe
B. S. in Education
Franklin, Indiana
Major: Social Studies
"C" Association 2, 3, 4.



Joyce Mae Dazey
B. S. in Education
Indianapolis, Indiana
Major: Art
Theacallosia 2, Secretary 3, Censor 4; Alpha Psi Omega 3, 4; F. T. A. 3; Art Club 1, Secretary 2; S. C. A. 1; Choir 1.

William Henry Dazey
B. S.
Indianapolis, Indiana
Major: Mathematics and
Physics
Zetagathea 3, 4; Alpha Phi
Omega 3, 4; Sigma Zeta 4;
F. T. A. 3.



Donald Dow
A. B.
Elkhart, Indiana
Major: English
Alpha Psi Omega, President
4.

William R. Eaton
B. S. in Education
Decatur, Illinois
Major: Art
Zetagathea 2, President 3, 4;
Choir 2, 3, 4; Male Quarter
1, 2, 3, 4; S. C. A. 4; Art
Club 1, 2, 3.



Willa Elizabeth Esters
B. S. in Education
Indianapolis, Indiana
Major: Elementary Education
F. T. A. 2, 3, 4.

James K. Fisher
B. S. in Education
Hartford City, Indiana
Major: Business Administration

Cheer Leader 1; Class president
2; Zetagathea 1, 2;
Alpha Psi Omega 3, 4;
Student Council 3, President
4; Business Club 3, 4;
S. C. A. 3, 4; Oracle Staff
3, Choir 1, 2.



Harry Juan Harrison
A. B.
Indianapolis, Indiana
Major: French and Spanish
Pan-linguist 2, 3, 4; Inter-
national Relations Club 2,
3, president 4.

Jesse Hilgert, Jr.
B. S.
Leavenworth, Indiana
Major: Chemistry
F. T. A. 3, 4.



Charles Jones, Jr.
B. S. in Education
North Salem, Indiana
Major: Music
Band 1, 2, 3, 4; Choir 2, 3,
4; College Quartet 3, 4;
F. T. A. 1, 4; Senior Play
4; M. E. N. C. 2, 3, 4;
Music Club 2, 3, 4; Phi
Sigma Mu 4.

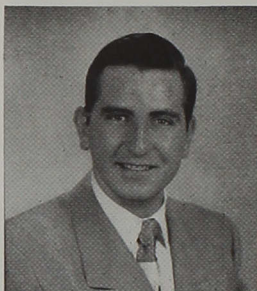
Martha Alice Junken
B. S. in Education
Southport, Indiana
Major: Elementary Education



Armour John Keller
A. B.
West Chester, Pennsylvania
Major: Bible and Religion
C. M. A. 3, President 4.

Weldon Ray Kincaide
B. S. in Business Administration
Warsaw, Indiana
Major: Business Administration

Football 2, 3, 4; "C" Association 3, 4; Student Council 4; Sigma Zeta 3, 4; Business Club 4; Dorm Council 1, 2.



James Albert Kindig
B. S. in Education
Brook, Indiana
Major: Music

Band 1, 2, 3, 4; Choir 1, 2, 3, president 4; Orchestra 3, 4; Music Club 1, 2, 3, president 4; M. E. N. C. 1, 2, 3, president 4; All-State College Band 3; F. T. A. 3, 4; Booster Club 1; Student Council 2; Collegians Male Quartet 3, 4; Epsilon Sigma Alpha 4; Phi Sigma Mu president 4.

Richard Eugene Kistler
A. B.

Logansport, Indiana
Major: Bible and Religion

Class treasurer 4; Senior Play; C. M. A. 1, 2, secretary 3, 4.



Joyce Iona Knight

A. B.
Mifflin, Indiana
Major: English

English Club 3, 4; F. T. A. 3, 4; Philalethea 2, 3, secretary 4; Pan-Linguists 3, 4; Epsilon Sigma Alpha.

Crystal Belle Livengood

B. S. in Education
Frankfort, Indiana
Major: Elementary Education

G. M. G. 4; Philalethea 3, 4; Choir 3, 4; S. C. A. 4; Queen's Court 4; F. T. A. 3, 4.



Harold William McPherson
A. B.

Vienna, West Virginia
Major: History

Choir 1, 2, 3, 4; College Quartet 3, 4; F. T. A. 4; International Relations Club 3; Pan-Linguist 1, 2; Zeta-ga-thea 2, 3, president 4; Senior Play.

James Mansfield

B. S. in Education
Muncie, Indiana
Major: English

Zetagathea 4; Alpha Psi Omega 3, 4; English Club 2, 3, 4; Student Council 4; Band 1, 2; Choir 1, 2, 3; Oracle Staff 3; Reflector Staff 2, 3; Director Senior Play.



Henry Emilio Martinez

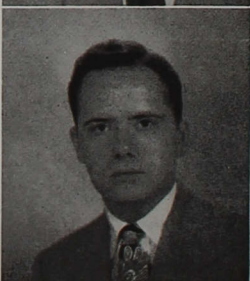
A. B.
Vallecitos, New Mexico
Major: Biology and Chemistry

Track 1, 2, 3; Cross Country 2, 3; Football 4; "C" Association 1, 2, 3, secretary 4; S. C. A. 2; Student Council 3; Pan-Linguists 1, 2; Booster Club 2, president 3; Oracle Staff 3; International Relations 3; Sigma Zeta 3, 4.

Verlin Eugene Mikesell

A. B.
Richmond, Indiana
Major: History

Track 1, 2; C. M. A. 1, 2; Band 4; Senior Class President.



Joseph Paul Miles

B. S. in Education
Hartford City, Indiana
Major: Business Administration and Art.

Art Club 2, 3, 4; Business Club 3, 4; S. C. A. 3, 4; Student Council 3; F. T. A. 2, 3, 4; Philomusea 2, 3, 4; Reflector Staff 3, 4; Oracle Staff 3, Class Treasurer, 3.

Jack Hamilton Oathout
B. S.
Cortland, Indiana
Major: Elementary Education



Verne Arthur Overton, Jr.
A. B.
Indianapolis, Indiana
Major: Art
Art Club 1, 2, 3.



Charles Wesley Peckham
A. B.
West Lima, Wisconsin
Major: Sociology
Philomusea 1, 3, 4, president
2, Student Council 4;
C. M. A. 1, 2, 3, 4;
S. C. A. 3, 4.



William Leroy Peterson
A. B.
Frankfort, Indiana
Major: Sociology
C. M. A. 1, 2, 3, 4.



Kathleen Celest Polter
B. S. in Education
Indianapolis, Indiana
Major: Elementary Education
F. T. A. 1, 2, 3, 4; S. C. A.
4; Student Council 4; Alpha
Psi Omega 4.



Robert D. Porter
B. S. in Education
Brownsburg, Indiana
Major: Physical Education
F. T. A. 4.



Betty Lou Ratliff
A. B.
Hartford City, Indiana
Major: Music
Music Club 1, 2, 3, 4; Eng-
lish Club 4; G. M. G. 2;
S. C. A. 2, 3, 4; Choir 1,
Accompanist 2, 3, 4; Orches-
tra 3, 4; String Quartet 1, 2;
English Club Award 1;
Chapel Trio 3.



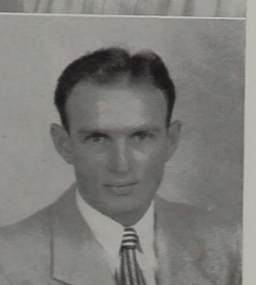
Melissa Elizabeth Rider
B. S. in Education
Westfield, Illinois
Major: Elementary Education
Band 1; Orchestra 3; Booster
Club 1; Student Council 2,
4; Philalethea 1, 2, 3, presi-
dent 4; S. C. A. Cabinet 3,
4; F. T. A. 3, 4; Senior
Play; Oracle, 3.



Wendell Howard Roberts
B. S. in Education
Indianapolis, Indiana
Major: Physical Education
F. T. A. 4; "C" Association
1, 2, 3, 4; Basketball 1, 2, 3;
Football 2, 3, 4; Track 1.



Robert Lee Robison
B. S. in Education
Brownstown, Indiana
Major: Physical Education
"C" Association 2, 3, 4; Bas-
ketball 2, 3, 4; Baseball 3,
4.



Gerald Eugene Schroder
B. S. in Education
Indianapolis, Indiana
Major: Business Administration and Physical Education

"C" Association 3, 4; F. T. A. 2, 3, 4; Business Club 3; President 4; Football 2, 3, 4; Senior Play.



Wayne H. Smith
B. S. in Education
Acton, Indiana
Major: Music

Choir 1, 2, 3, 4; Band 1, 2, 3, 4; Orchestra 3, 4; Collegians Male Quartet 3, 4; Music Club 1, 2, 3, 4; Phi Sigma Mu 4; All-State College Band 3; M. E. N. C. 1, 2, 3, 4; Zetagahea 3, sec. & critic 4; Senior Play.



Verda Louise Spangler

A. B.
Pitcairn, Pennsylvania
Major: English

Philalethea 1, 2, 3, President 4; Girls Mission Guild 1, 2, 3, 4; S. C. A. Cabinet 3; F. T. A. 4; English Club 4; Class Secretary 2, 3.



Donald Lloyd Stevenson
B. S. in Education
Cory, Indiana
Majors: Physical Education and Chemistry

Sigma Zeta 4; Alpha Phi Omega 4; F. T. A. 3, 4; "C" Association 1, 2, 3, 4; Captain Basketball Team 4; Student Council 4; Senior Play.



Phyllis Anne Stuck

B. S. in Education
Indianapolis, Indiana
Major: Elementary Education

Theacallosia 1, 2, 3, President 4; F. T. A. 1, 2, 3; S. C. A. Committee 3.



Dwight Walker Swails

B. S. in Education
Acton, Indiana
Major: Physical Education
Basketball 1, 2, 3, 4; "C" Association 1, 2, 3, 4; Baseball 1, 2.



Dwight Taylor

A. B.
Bedford, Indiana
Major: Art

Art Club, President 2, 3. Pan Linguist 2, 3; Zetagahea 3, 4; F. T. A. 3, President 4; Choir 2; Reflector 3; Senior Play.



Jay A. Taylor

A. B.
North Manchester, Indiana
Major: History
C. M. A. 1, 2, 3, 4; Cross Country 1; Philomusea 2, President 3, 4; Student Council 2, 4.



Rollin J. Tindall

A. B.
Akron, Iowa
Majors: Bible & Religion and Sociology

Philomusea 1, 2, President 3, 4; Choir 1, 2, 3; Booster Club 3, 4.



Charles Wayne Tippin

B. S. in Education
Clarksburg, Indiana
Major: Elementary Education
F. T. A. 2, 3, 4; Dorm Council 4.



Bradley Dean Warren
A. B.
Oswego, Illinois
Major: Social Studies
F. T. A. 3, 4; Business Club
4; Zetagathea 4.



Thelma Pauline Washburn
B. S. in Education
Casey, Illinois
Major: Elementary Education
English Club 3, 4; F. T. A.
4; G. M. G. 2, president 3,
4; Pan-Linguist 1, 2, 3, Vice
president 4; Philalethea 2,
3, 4; Student Council 4.



Eugene Merle Westley
A. B.
Port Allegany, Pennsylvania
Major: Bible and Religion
College Quartet 2; S. C. A.
president 4.



Arthur Boyd Winn
A. B.
Indianapolis, Indiana
Major: Art and French
Art Club 1, 2, 3, 4; Alpha
Psi Omega 4; Pan-Linguist
4; S. C. A. 4.



Mary Colbert
B. S. in Education
Indianapolis, Indiana
Major: Elementary Education



Camera Shy

Ross Emery Wallace
A. B.
Elizabethtown, Indiana
Major: Sociology

Here we are Seniors
Preparing to make,
That dreaded departure
From these happy gates.

We all have found studies
A happy joy,
A dreaded monotony,
Even discouraging scores.

But when we look back
In Memory Lane,
We find all the occasions
Still very dear, just the same.

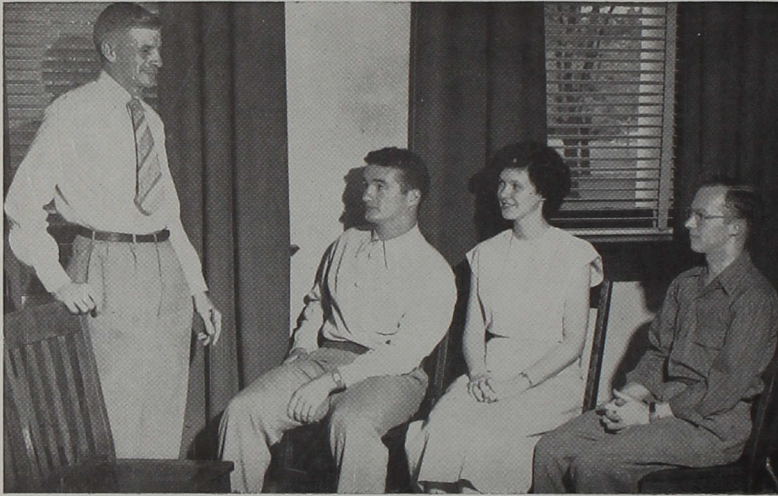
We see all the folk and
faculty too,
Our wonderful President and
Registrar true.

All tho' our many ways may part
And we find it hard to make a start,
We'll always know, dear I. C. C.
Is standing behind us as true as can be.

And so you see,
It is important to me
And important to be
A graduate from our own I. C. C.

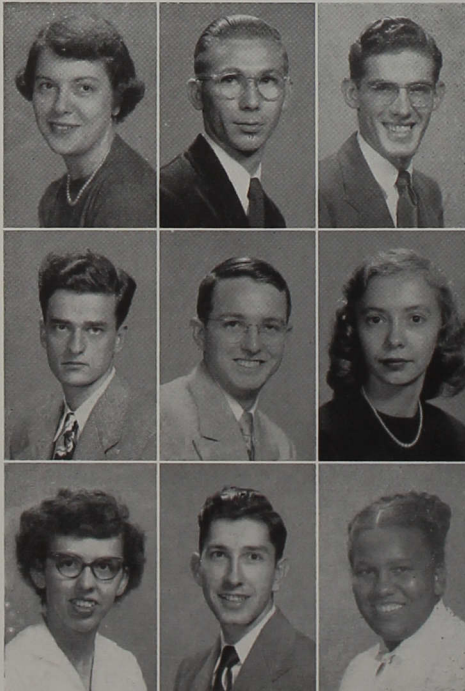
K. Celest Polter, 1951

The Junior Class



Officers

President.....	Roy Turley
Vice-president.....	Dale Robinson
Secretary	Shirley Moren
Treasurer.....	Herbert Potts



Nancy Carolyn Abney

Russell Dean Albert

Raymond Lee Alexander

Jack Paul Andrews

Meredith Richard Armstrong

Rosemary Arndt

Eloise Marie Bilby

Leland Landram Brett

Clara Rosemary Brown

Charles Richard Bugbee

Donald George Burkhardt

Hilda Norine Campbell



Rose Marie Carpenter

Martha Aileen Cohee

Mary Elizabeth Colbert



Gordon Leroy Cole

Robert James DeNoon

Forrest Farris



Lionel Kenneth Gouty

Carol Lambert Haynes

Phyllis Ann Huber



John Henry Hupp

Harry Dean Inghuhn

Betty Irene Lunsford



Floyd William Mevis

Robert E. Miller

Charlene Yvonne Mills





Shirley Ann Moren

Judith Ellen Morgan

Mildred Mae Myers



Robert E. Newnum

Grace D. O'Reilly

Chester James Payne



Ray Alfred Pierce

Herbert W. Potts

Charles David Robinson



Maybelle Runk

Betty Jean Sackmire

Renaldo Anthony Savenelli



Joan Louise Senff

Lysle Leavitt Sheeley

Wayne Sanford Shipley



Harry Ellsworth Smith

Laveta May Smith

Lois Eileen Smith

Martha June Stone

Donald Sumwalt

Ward DeHart Vass



Richard Arthur Warren

Daisy Marie Welsh

Virginia Ann Young

Camera Shy Juniors

Leona Bottrell Armstrong

Paul Prentice Bateman

Everett Keith Beasley

Donald Carl Bulthaup

Jack Edward Colescott

Starlin W. Daugherty

Walter Dininger

Bruce Hilton

David Richard Johnson

Mary Elizabeth Merritt

Max Richard Moore

Charles Morris

Leon V. Patterson

Anthony S. Priola

Donald Eugene Robinson

David Lowell Saunders

David Shaw

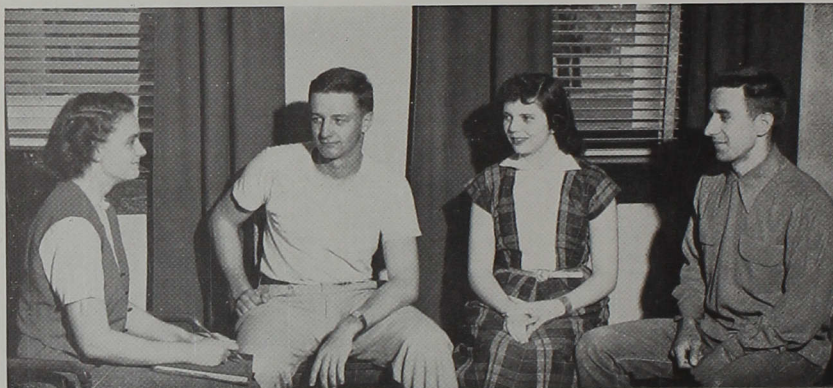
Charles Keith Sprague

Roy Harvey Turley

Dean Leon Zike

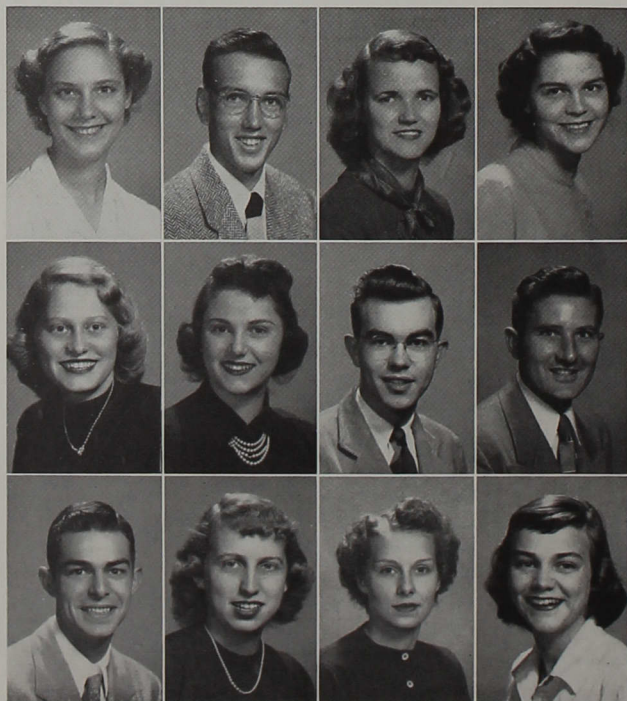


The Sophomore Class



Officers

President.....	Margaret Ewert
Vice-President.....	Joe Hurrel
Secretary.....	Joanne Dennis
Treasurer.....	Walt Stalhut



Phyllis Ann Albright
John Knight Alexander
Ruth Esther Anderson
Marilyn Ann Axel
Joanne Ethel Baldwin
Nancy Jane Beaman
William D. Bemenderfer
Maurice Boncutter
Arthur Dean Bright
Beverly June Burkhardt
Betty Elnora Butler
Elsa Carter

Paul Chambers, Jr.

Frieda Clark

Charles LaVerl Cook

Lorraine Lucille Cummings



Joanne Dennis

Joan Evelyn Dinkel

Mary Ella Echols

Melba Louise Edwards



Herman A. Emmert

Margaret May Ewert

Jack Sullivan Fuller

Bobby Gayle Fyffe



Betty Jean Gibbons

Doyle Dean Good

William L. Greathouse

Robert Clarence Hackl



Doris Edith Harden

Robert E. Hardwicke

Alton Lee Hawkins

Richard James Hiestand



Joanne Ruth Hilficker

David Hilton

Ethel Anna Hobson

Ralph Eugene Horn





Joan Maxine Hosterler

Joanne Jump

Ruth Anna Kopp

Charles Ray Lane



Veva Kathryn Langford

Wilmer Dea Lawrence

Joseph Lewis

Margaret Joyce Liechty



James Lucas

Robert McKinney

Yvonne Pearly McMurray

Kathryn Irene Neeley



Pearly Montgomery

Lowell Painter

William Eugene Pickard

Bruce C. Porter



Leroy Ray Rapp

John Benjamin Reed

Peggy Ann Reeves

George Franklin Rosselot



Roger Rouch

Charles Aldrick Russell

Dorothy Marie Schober

John Edward Sharp

Doris Sims

John Edgar Sinclair

Charlotte L. Smith

Jacqueline Ann Smith

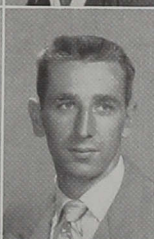


Jess Porter Smither

Gerald Dean Spitzer

Walter Carl Stalhut

Dorothy May Steele



Helen Ruth Stephenson

Charles H. Stotts

Ronald Strachan

Elbert Ralph Strain



Ruth Luella Sumwalt

Carolyn June Vannatta

Joseph Clark White

Lois Elinor Williams



Camera Shy Sophomores

Thomas Edward Barnes

William C. Beckelheimer

Groff Bittner

Jack Eugene Bowman

Marion Gene Burleson

Oscar Harper

Joe Henry Hurre

Walter Clay Johnson

David H. Jones

Vincent Klos

John Donald Preston

James Snead

Arnold W. Spilly

Howard E. Strong

Richard Kenneth Theil

Robert Floyd Carpenter

Billy Crowe

Martha Fletcher Davenport

Gene E. Dietz

James Robert East

Herschell Landreth

Wanda Mae Lewellen

Charles Mather

Cecil Meadows

Maynard Moser

Leota Weathers

Eugene R. Whitten

John T. Windell

John Samuel Yeftich

Tom Samuel Yeftich

The Freshman Class



Officers

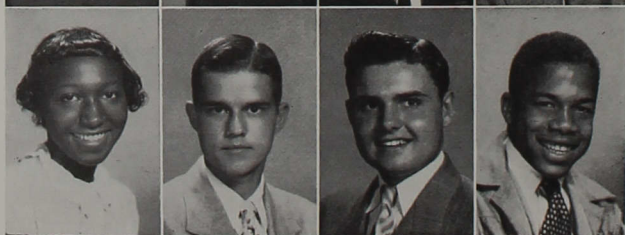
President..... Ray Swayne
 Vice-President..... Hale Cole
 Sec.-Treas..... Effie Buchanan



Mary Jo Adams
 James Edward Allen
 Emmett Lloyd Anderson
 James Nicholas Anderson



Ruth Marcella Baker
 Betty Joan Bilby
 Elmer Eldo Bosworth
 Carl Leo Breeding



Anna Marie Bridgeforth
 William A. Bright
 William Edgar Bross
 Norman Taylor Brown

Laura Effie Buchanan

Raymond Buck

James Hubert Burns

Burdellis LaVerne Carter



Oris Lee Cassetty

Mary Alice Clark

Haldon Turner Cole

Anna Mae Comer



Eileen Rosa Cox

Betty Ann Crawford

Malcolm Crosby

Andrew Keith Damon



Doris Ann Davis

John William Davis

Dale Chester Decker

Kenneth Alvin Ekstrom



George Robert Emmett

Gene Eskelson

Franklin Paul Fowell

Darlene Galloway



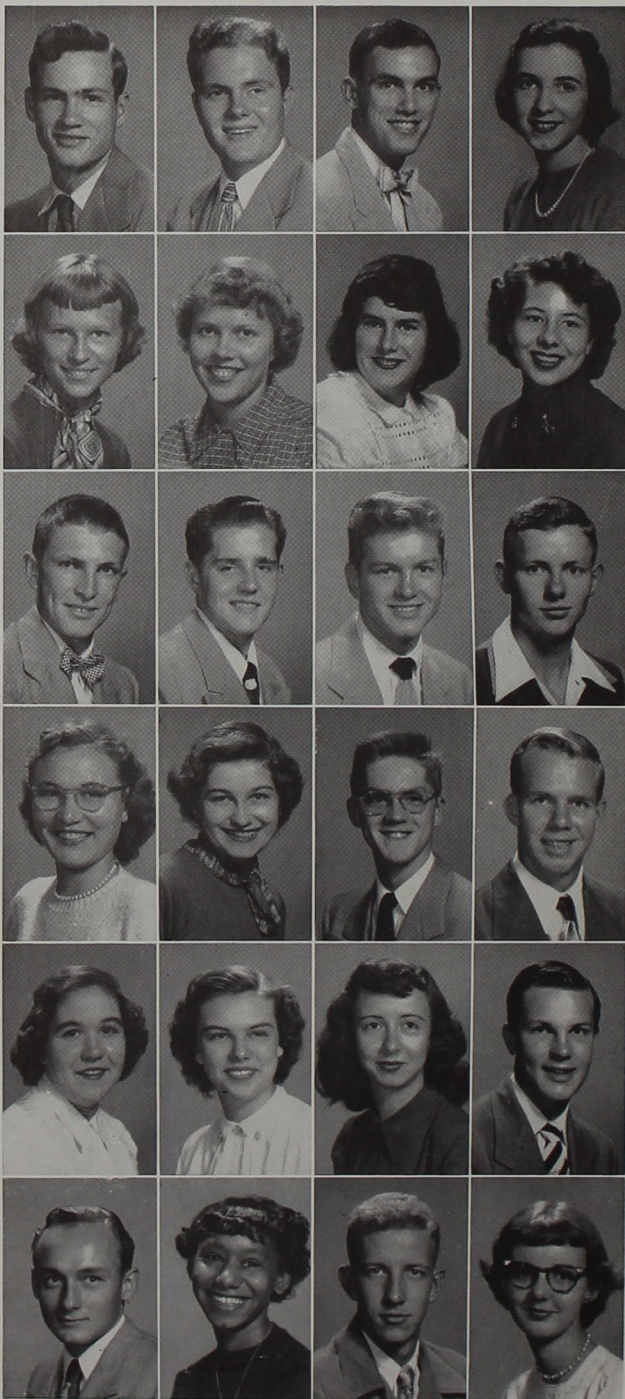
Myrtle LaRue Garriott

Daniel Ray Gifford

William Leroy Gsell

Lester Rex Gudgeon





Thomas Hathaway

Ronald Lynn Hauswald

William Fred Hendershot

Alice Joan Hughes

Mary Elizabeth Huston

Carolyn Sue Jones

Kathleen Jordan

Dixie Marlene Key

Warren Keyser

Donald Daniel Klinger, Jr.

Raymond Lee

John Lewellen

Nancy Joan Lilly

Gladys Gail Lovelace

Marvin C. Maguire

Jerry C. Martin

Suzanne Martin

Anita Joyce McVey

Sheila Meredith

Lowell Wayne Merryman

Allen W. Meyerrose

Suzanne Miller

William H. Miller

Carolyn Mae Morris

John Wesley Morris

Frances Naugle

Mary Elizabeth Odle

Margaret Abigail Parrish



Joseph Pezzullo

Roberta Lee Pierce

Walter L. Pritchard

Rosalie Rapp



Mary Alice Reddick

Betty Jean Rivers

Dolores Jane Rowe

Keith Scott Russell



Marvin Eugene Schlosser

Roland Carl Schroeder

Harold Leroy Schuman, Jr.

Carolyn Schuster



Myron Lowell Scotten

Robert Glen Sharp

E. Janet Sharp

Carolyn Joyce Shrack



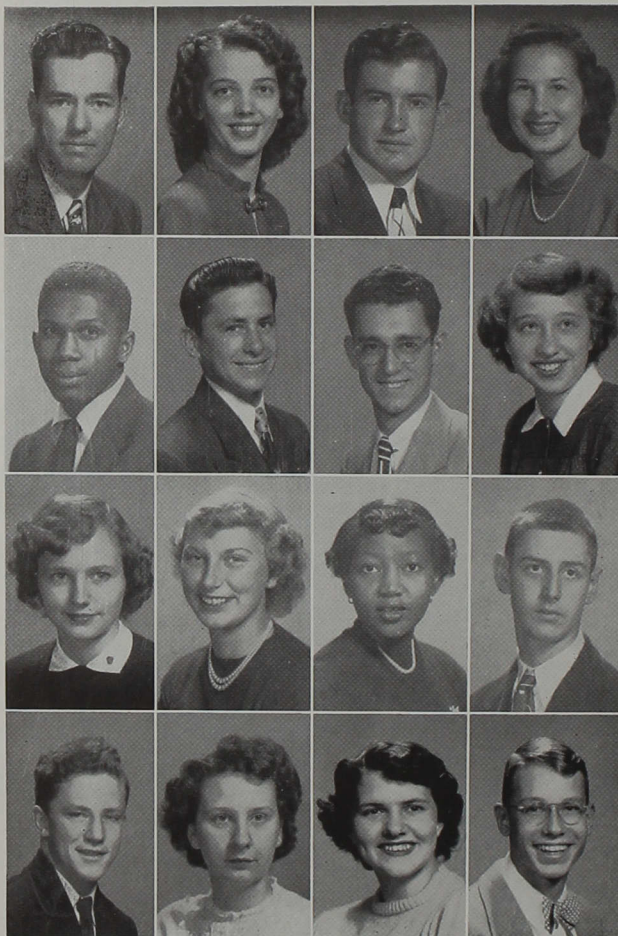
Leonard Robert Smith

William Smith

Carolyn Jane Smitley

Karl Stephenson





Wayne Stein

Betty Mae Stuffle

Paul Ray Swayne

Millicent Tatter

Donald Andrew Thomas

Glenn Cory Todd

Herbert Harold Tomamichel

Donna Ruth Turley

Carolyn Wade

Marie Wainio

Marjorie Ann Watkins

Edward Riley White

James A. Wolf

Lorraine A. Zinck

Lora Ellen FitzGerald

Donald Elmer Hilton

Camera Shy Freshmen

Barbara A. Alexander
John Paul Beaman
Homer I. Bledsoe
George Edward Bosard
Joseph Edward Butterworth
Barbara Anne Carter
Edith Copeland
William Joseph Cutshaw

William Robert Hilycord
John Howard
Willis R. Howard
Walter Frederick Johnson
Ellen King
Henry Earl Leistikow
Charles E. Lentz
Ronald Allen Lynch

Russell Plummer
Richard Morris Pollard
Dean Ransburg
Roscoe Henry Reynolds
James Shaw
Joseph Shaw
Donald Lee Spivey

Chester Wiese
James F. Wilson
Cleta Wuertz
Charles Zoph

Rufus McKinley Dodrill, Jr.
Jack Sullivan Fuller
Verna Mae Garber
Elmer Curtis Gates
Larry Ronald Gillum
Walter Robert Grey
Doris Edith Harden
Lorenz Hauer

Anastacio Martinez
Paul Middlebrook
Carol Lee Miller
Lemuel Farrel Mills
Donna Joann Myer
William Myers II
Robert Arthur Oldham
Eugene Piercefield

Woodrow Staton
Carlton Terrell
Fred Thayer, Jr.
Gene Tipps
Mary Ann Tuck
Buelah E. Van Ostran
Herman L. Webb
Minard Gene Whetstone

Unclassified

Demetrius Antony Antonopoulos

Elmer Ward Arnold

Lloyd Carman Barden

Ruth Collins



Keith Howard Conrow

Leon George

Robert Milton Harvey

Harry Albert McGuff



Betty Jo Pebbles

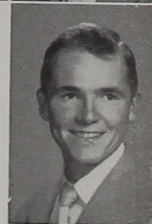
Harold Lee Peck

Mary Oliver Stoneburner

Ernest Stubbs



James Wren



Camera Shy

Donald Ralph Adkins

Albert George Berry

James Bynum Brown

Eldon Eugene Campbell

Russell Christler

Clara LaVon Coldren

Hugh E. Jarrett

Robert Gene Kelsay

Dale Knarzer

June Maedelle Long

Harry Albert McGuff

Moses Musa Mahoi

John William Davis

Ralph Fox

Jack Webster Hall

Augustus Higgins

Frederic Lee Hollis

Robert Dale Hotz

Jack William Plake

Roy Milton Robinson

Dolores Jane Rowe

Jack Thomas

Thomas O. Thompson

John Aaron Tompkins

Lee Anthony Wilcoxon
Harold C. Wright



Dizzy Doings

Putting all that hot air to use...One, two, three, splash!...Fresh frosh...More of same... Indiana wonderland...Easy there, Sadie Hawkins! ...Easy there, Daisy Mae!



All School Life

Getting kissed and keeping balance

Is one among Mary's talents.



C
A
M
P
U
S

R
O
Y
A
L
T
Y



Reigning over the campus as queen during the year was Miss Rose Ann Rider of Indianapolis. An attractive red-haired music major with a richly pleasing personality, Miss Rider had as her attendants Kathleen Chappelle, Trudy Fields, Jacqueline Duffey, and Crystal Belle Livengood. The Spring Festival held in honor of the queen consisted of displays of a mixer march, the flying rings, the baton twirlers, the skaters, Skip to My Lou, a baseball game, the tap dancers, a page from children's literature, the glittering jesters, the winding of the Maypole, music by the band and choir, and the crowning of the new queen.

Suspense was evident all over the campus from the time of the election for the 1951-52 queen until it was revealed at the Spring Festival on May 18 that Miss Nancy Abney had been chosen. The runners-up composing the court are Martha Stone, Shirley Moren, Judy Morgan, and Laveta Smith.



Typical freshmen chosen at the Big Mixer were Bill Bright and Margaret Parrish. Awards received were a monkey and a rabbit.



The Tug o' War settled an important issue. The sophomore class pulled the freshmen into the water so green beanies were worn by the freshmen until Thanksgiving vacation.



The same evening as the Tug o' War was Stunt Night held in the auditorium. The senior stunt won, but it was closely followed by the junior class version of pantomime to Spike Jone's Chloe.



Representing the school this year as the College Male Quartet were Wayne Smith, Charles Jones, Albert Kindig, and Harold MacPherson. Doris Davis accompanied the singers.





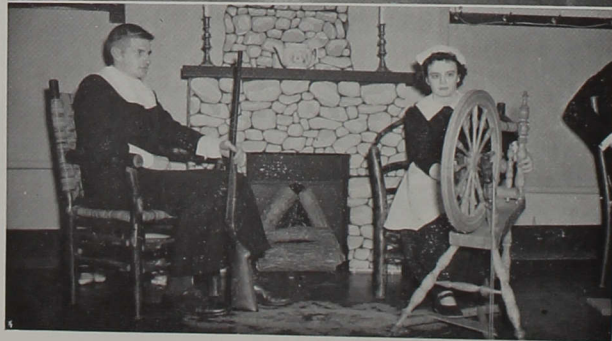
Nominated by the football men and chosen by the entire student body, Joanne Dennis was crowned Homecoming Queen by Verne Chandler, the president of the "C" Association. In the court are Joyce Liechty, Marilyn Axel, Joanne Jump.



The Homecoming Day Parade consisted of floats from each class. The winning float was entered by the junior class which had in mind the winning of the All Sports Trophy as early as October.



The evening of Homecoming-High School Day, the Alpha Psi Omega presented the light and gay comedy, *Peg O' My Heart*. It was well received at the end of this busy day.



Suggesting the Pilgrim heritage in our traditional Thanksgiving Day were Roy Turley and Joan Senff at the Thanksgiving Banquet.

A heavy blanket of snow caused the Sadie Hawkins Race to be held in the gym. Vainly seeking protection even in the rafters, the fellows were caught and were possessed by the gals for the evening which began Leap Week.



Climaxing Leap Week was the Sweet-heart Banquet at which the girls were responsible for the dates. Sometime during the evening all eyes were cast on the Campus Queen, Rose Ann Rider and her guest, Richard Gira.



Singing at school events and at churches throughout the state, the College Trio which is chosen by tryouts is Laveta Smith, pianist; Lois Smith, Martha Stone, Rosalie Rapp.



A unique play given by the junior class was "On the Night of January Sixteenth", a court room trial of a murder case after which a jury chosen from the audience decided the verdict, "Not guilty."





Mr. April Fool and Miss April Showers proved to be Herman Emmert and June Vanatta elected by the sophomore class on April Fool's Day.



With a day's profit of \$2.14, these three gained membership into the Moron Union by selling short pencils and collecting money in a tin cup from musical "talent".



Betty Stuffle and Marilyn Axel entertain the Campus Queen and her court with the race between the tortoise and the hare.



The Student Wives Club show a bit of foolishness in wearing hats made from "everything except the kitchen sink."

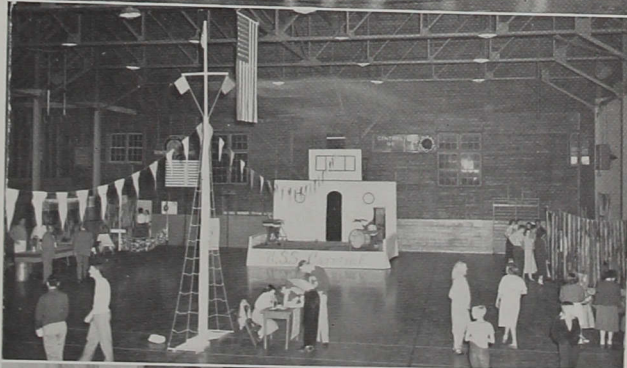
The Greyhound Quartet began only for the amusement of its own members but ended up as the busiest music group on campus. The members are Bill Eaton, Don Hilton, Bruce Hilton, and Dave Hilton.



Ready for the tip off are Ruth Anderson and Jay Windell when referee Mary Steele tosses the ball into the air for the basketball game to be played between the sophomore boys and girls. In some fixed way the girls emerged victorious.

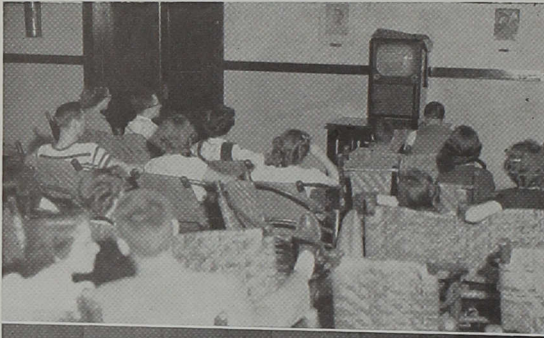


With entertainment from the Showboat, booths, and good food, the Junior Carnival was a big success. Various clubs and classes sponsored the booths.



"As You Like It" was in progress as Wayne Shipley entertained Daisy Welsh and Betty Lou Ratliff. Bob Miller directed the play while the class looked on in Shakespearian style.





Television came to the Wilmore Hall recreation room in January! Students have appreciated the "home" entertainment from this gift presented by two businessmen of Indianapolis.



The first of the Senior Recitals was Miss Trudy Fields on her violin and Betty Lou Ratliff her accompanist.



Chosen as the outstanding seniors and freshmen were Dave Elliott, Crystal Liven-good, Effie Buchanan, and Ray Buck. Presenting the awards is the president of the S. C. A., Floyd Mevis.



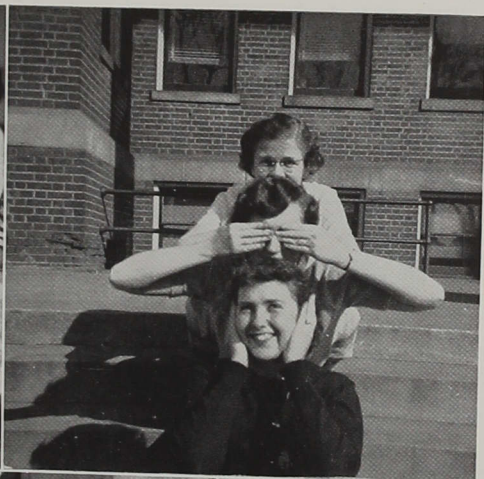
Peachy Pairs

Dagnab nice kids... Hope no one's looking, Chuck!... Hoosier, New Yorker... That's a half nelson he's using... Those handy Ad Building steps!... Look out, Ray, that's a jewelry store in back of you!... Come on, Cy, smile!... Willie, Al, and Friends.



Wilmore, Scene of Wild She-nanigans

No slumber at this party...Aw, come on, please!...Huh?...Open window policy...10 below zero...Shirley popped a corny...Somebody new in the dorm?...Rogues' gallery...Boy, is she stacked!...New boy friend.



More Female Foolery

Drinking again... No evil here... Sneaking in,
or escaping?... Thanks, I already have a date...
Quadruple pulchritude... Hey, not quite so much!
... Welcome back, seniors!



SEATED: Professor Miller, Elizabeth Rider, Walt Stalhut, Jackie Duffey, Weldon Kincaide, Rosemary Arndt, Nancy Abney, Dave Elliott. STANDING: Russ Albert, Art Bright.

STUDENT COUNCIL

In an attempt to make adjustments in school organization to meet the needs and desires of the students, the Student Council analyzes student problems and presents them to the administration. Officers this year were Jim Fisher, president; Dave Elliott, vice-president; Jackie Duffey and Verne Chandler, representatives-at-large.

STUDENT CHRISTIAN ASSOCIATION CABINET

Serving the combined efforts of Y. M. C. A. and Y. W. C. A. the S. C. A. has an important part in planning the religious and social functions on the campus throughout the year. The officers are elected by the entire student body, and the cabinet is appointed by the officers. Gene Wesley was the president this year.

SEATED: Gene Wesley, Kathy Chappelle, Betty Lou Ratliff, Lionel Gouty, Elizabeth Rider, Charles Peckham. STANDING: Dale Robinson, Chris Livengood, Bruce Hilton, Virginia Young, Joanne Dennis.





SEATED: Al Kindig, Joan Dinkel, Roy Turley, Eloise Bilby, Bruce Hilton, Joyce Liechty. STANDING: Russ Albert, Art Bright, Miss Bunting, Jackie Smith, Sheila Meredith, Kathy Chappelle, Dixie Key.

REFLECTOR

Edited by Eloise Bilby and her efficient staff, the monthly publication of the Reflector was read with interest by students, faculty, and alumni. Joan Dinkel was appointed to editorship for the coming year and began her duties by editing the May issue of this school year.

ORACLE

Because of unfortunate circumstances, work on the Oracle did not get under way until February. In the short time remaining for the publication of the year book, Shirley Moren and the staff worked hard to complete the job and present this book to you. We wish to express our gratitude to Mr. Kek and Miss Bunting for their advice; to the Indianapolis Engraving Company; and to the printers, the Graessle-Mercer Company of Seymour.

SEATED: Shirley Moren, Joyce Liechty, Daisy Welsh, Mr. Kek. STANDING: Floyd Mevis, Rosemary Arndt, Bruce Hilton, Virginia Young, Herb Potts, Judith Morgan.





FIRST ROW: Melba Edwards, Margaret Parrish, Martha Stone. SECOND ROW: Doris Brooks, Rollin Tindall, Hal Cole, Richard Warren, Walter Stalhut, Darlene Galloway.

BOOSTER CLUB

Throughout the year at home athletic games and other events, the Booster Club sells popcorn, cokes, and candy at concession stands. The funds earned by the organization are used to buy letter sweaters for all varsity title winners. Sponsored by Dr. Morgan, the organization is a hard-working group that deserves laurels from the student body.

I. A. Y.

The I. A. Y., organized on our campus during the second semester, has service as its motive. The purpose of its members, which are both college students and service-minded women in the community, is to serve the school, community, and world; to promote friendship for all nations, races and creeds; and to seek knowledge and understanding for the further development of character.

SEATED: Nancy Abney, Dorothy Steele, Joanne Baldwin, Melba Edwards, Jackie Smith, Nancy Beaman, Joan Dinkel. STANDING: Miss Shelquist.





FIRST ROW: Joseph White, Renaldo Savenelli, Don Burkhardt, Dave Elliott, Lysle Sheeley, Professor Davis, Gerald Spitzer. SECOND ROW: Don Bulthaupt, Dick Pollard, Ronald Hauswald, Don Stevenson, Walt Bartkiewicz, Charles Zoph, John Sinclair, Bill Dazey. THIRD ROW: Elbert Strain, Keith Brown, Charles Cook, Leon George.

ALPHI PHI OMEGA

Another organization with service as its purpose is the A. P. O. Assisting in campus elections and participating in other worthy projects for service to the school and community, this fraternity shares in a worthy contribution to the entire student body.

Shown improving the landscaping and painting the Indiana Central sign at the corner of Shelby and Hanna are Ronald Hauswald, Gerald Spitzer, Leon George, Don Stevenson, and Lysle Sheeley.





SEATED: Bruce Hilton, Gordon Cole, Herb Potts. STANDING: J. C. White, Rollin Tindall, Herman Emmert, Floyd Mevis, Charles Peckham.

PHILOMUSEA-PHILAETHEA

Music, devotions, literary productions, extemporaneous and impromptu speaking conducted according to the proper rules of parliamentary procedure comprise the hour spent in literary society on Monday evenings.

The formally-dressed Philaetheans indicate that the occasion was the evening of formal initiation of new members who had enjoyed a banquet with their society sisters and had attended their first meeting within the ranks of membership. Mr. Kek and Miss Weaver were the sponsors.

SEATED: Carolyn Smittley, Mary Clark, Crystal Livengood, Kathy Chappelle, Mary Odle, Miss Weaver, Laveta Smith, Ruth Clausius, Joyce Knight, Mary Huston, Effie Buchanan. SECOND ROW: Ethyl Hobson, Kathryn Neeley, Irene Lunsford, Dorothy Schober, Yvonne McMurray, Daisy Welsh, Thelma Washburn, Dixie Key, Betty Crawford, Patricia Hilficker, Carolyn Jones, Elizabeth Rider. THIRD ROW: Verda Spangler, Hilda Campbell, Martha Cohee, Mary Alice Reddick, Shirley Moren, Margaret Ewert, Dorothy Steele, Joan Lilly, Lora FitzGerald, Jackie Duffey, Lois Williams, Gladys Lovelace, Margaret Parrish.





SEATED: Betty Sackmire, Martha Stone, Eloise Bilby. STANDING: Rose Ann Rider, Nancy Abney, Lois Smith, Maybelle Runk, Marie Wainio, Beulah Van Ostran, Helen Ruth Stephenson, Betty Bilby, Doris Brooks, Marilyn Axel, Millie Tatter, Joanne Baldwin, Phyllis Stuck.

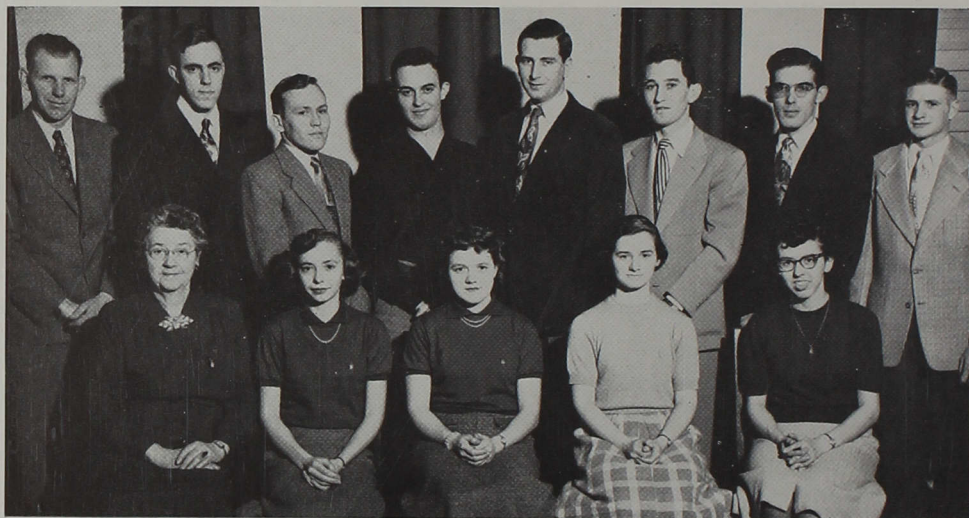
THEACALLOSIA-ZETAGATHEA

Having as their purpose aims similar to the other literary groups, the sister and brother societies Theacallosia and Zetagathea co-operate with the other societies in planning the annual Formal Reception and the spring Literary Banquet.

Highlighting the year for Zetagathea was the winning of the trophy for the best production of the year in a contest between the literary societies on Awards Day. Bob Miller submitted the production entitled, "America, Land of the Free". Sponsors of the societies were Dr. Kek and Dr. Cramer.

SEATED: Wayne Smith, Harold MacPherson, Wayne Shipley. STANDING: Keith Brown, Bill Eaton, Bob Miller, Dave Hilton, Jim Mansfield, Ronald Hauswald, Don Hilton, Ray Swayne, Dr. Cramer.





SEATED: Miss Cravens, Rosemary Arndt, Judith Morgan, Patricia Hilficker, Eloise Bilby. STAND-
ING: Professor Kent, Donald Bulthaup, David Elliott, Henry Martinez, Weldon Kincaide, William
Daze, Ray Alexander, Roy Turley.

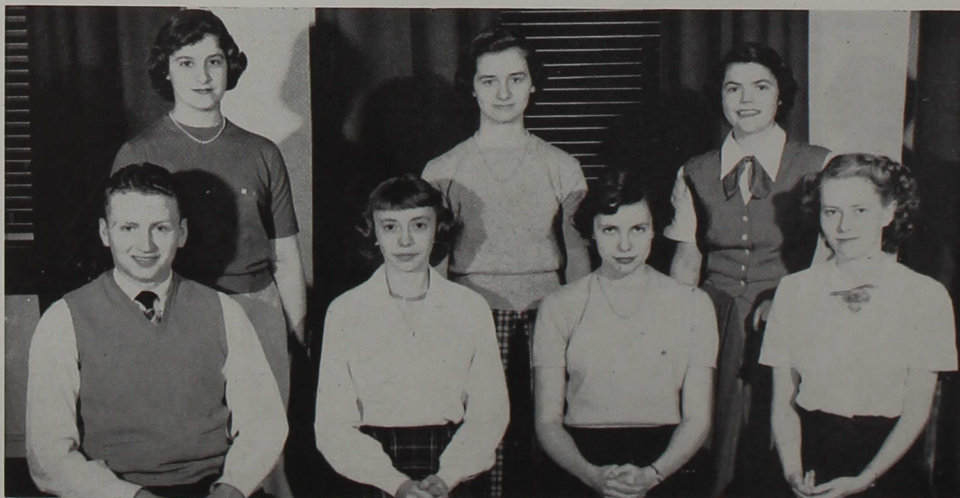
SIGMA ZETA

The society for those who maintain a high scholarship index and are interested in science is the Rho Chapter of Sigma Zeta.

PHI ALPHA EPSILON

The Freshmen Honor Society is composed of students who maintain a high scholastic average during the freshman year and make a worthy contribution to the campus. The members that are not pictured are Martha Stone and Jess Smither.

SEATED: David Jones, Rosemary Arndt, Jackie Smith, Jackie Duffey. STANDING: Joan Dinkel,
Patricia Hilficker, Joyce Liechty.





FIRST ROW: Miss Weaver, Yvonne McMurray, Betty Butler, Phyllis Huber, Kathy Chappelle, Verda Spangler, Daisy Welsh. SECOND ROW: Maybelle Runk, Thelma Washburn, Grace O'Reilly, Mildred Myers, Shirley Moren, Hilda Campbell, Betty Lou Ratliff. THIRD ROW: Miss Hert, Bob Miller, Wayne Shipley, Dave Saunders, Dr. Kellogg, Miss Bunting.

ENGLISH CLUB

Membership into the English Club is open to any student interested in literary art. Monthly meetings which consist of book reviews, theater parties, and other stimulating programs are for the enjoyment of the members and the sponsors.

VESTA CLUB

Majors and minors in home economics, Vesta Club members are talented in providing goodies when the occasion calls. Miss Huey sponsors the girls in their participation in local affairs as well as state and national home economic organizations.

SEATED: Miss Huey. STANDING: Burdell Carter, Joan Dinkel, Frances Naugle, Gertrude Beasley, Myrtle Garriott, Mary Odle, Martha Cohee.





FIRST ROW: Millie Tatter, Betty Butler, June Vanatta, Frieda Myers, Laveta Smith, Professor Schirmer, Rose Ann Rider, Betty Crawford, Carolyn Schrack, Maybelle Runk, Chris Livengood, Betty Lou Ratliff. SECOND ROW: Betty Bilby, Martha Stone, Sheila Meredith, Lorraine Cummings, Eloise Bilby, Lois Smith, Trudy Fields, Joanne Dennis, Margaret Ewert, Mary Alice Reddick, Beulah Van Ostran, Mary Jo Adams. THIRD ROW: Ellen King, Myrtle Garriott, Anita McVey, Margaret Parrish, Don Hilton, George Rosselot, Bob Miller, Bill Eaton, Burdellis Carter, Phyllis Albright, Hilda Campbell, Rosalie Rapp. FOURTH ROW: Ward Vass, Ray Swayne, William Bross, Harold MacPherson, Herman Emmert, Bill Bemenderfer, Wayne Smith, Al Kindig, Charles Jones, Jim Allen, Dale Robinson.

CHOIR

Indiana Central is proud of its choir. Singing in many churches and schools throughout the year, the Choir has a busy schedule. The climax of the school year for choir members comes in April when they spend a whole week touring Indiana and Illinois advertising their brand of good music from I. C. C.

ORCHESTRA

Providing concerts and always ready for the call to play lovely music, the Orchestra under the leadership of Dr. Marple makes a fine contribution to our school.

CENTER: Dr. Marple. FIRST ROW: Trudy Fields, Beulah Van Ostran, Bob Miller, Elsa Carter, Patricia Hilficker. SECOND ROW: Dale Robinson, Frieda Myers, Betty Lou Ratliff, Joyce Liechty, Laveta Smith, Charles Jones, Ruth Anderson, Al Kindig, Rose Ann Rider, Wayne Shipley, Joanne Hilficker. THIRD ROW: Wayne Smith, June Vanatta, Maynard Moser, Herman Emmert. STANDING: Eloise Bilby, Phyllis Albright, George Rosselot, Russ Albert.





CENTER: Dr. Marple. FIRST ROW: Al Kindig, Ruth Anderson, Laveta Smith, Joyce Liechty. SECOND ROW: Charles Jones, Betty Gibbons, Frieda Myers, Frances Naugle, Keith Brown, Maynard Moser, James Burns, Herbert Tomamichel, Ronald Houswald, June Vanatta, Wayne Smith. THIRD ROW: Gene Mikesell, John Hupp, Bruce Hilton, George Rosselot, Herman Emmert. STANDING: Eloise Bilby, Burdell Carter, Emmett Anderson, Forrest Ferris, Russ Albert.

BAND

Marching during half-time at home football games and providing snappy music at home basketball games, the Band did its share in promoting an enthusiastic school spirit. In addition to their pep music the band demonstrated their concert style in programs during the year.

FUTURE TEACHERS OF AMERICA

The local I. J. Good of F. T. A. is affiliated with both the Indiana State Teachers Association and the National Educational Association. Members receive the monthly publication of the magazines from these organizations.

FIRST ROW: Professor Davis, Phyllis Huber, Charlene Mills, Dorothy Schober, Crystal Livengood, Verda Spangler, Willa Esters, Betty Butler, Martha Stone, Dwight Taylor. SECOND ROW: Richard Warren, Rosemary Brown, Thelma Washburn, Elizabeth Rider, Hilda Campbell, Mildred Myers, Shirley Moren, Gertrude Beasley, John Sinclair. THIRD ROW: Renaldo Savenelli, Everett Beasley, Gerald Schroeder, Wayne Tippin, Bradley Warren, Harold McPherson, Donald Stevenson, Gerald Spitzer.





SEATED: Doris Brooks, Gerald Schroeder, Russ Albert, Betty Sackmire, Cy Kincaide. SECOND ROW: Carolyn Jones, Mary Jo Adams, Joe Pezzullo, Warren Kyser, Starlin Daugherty, Renaldo Savenelli, Charles Sprague, Mrs. Miller. THIRD ROW: Max Moore, Robert Sharp, John Lewellan, Russ Plummer, Mr. Miller, Donald Burkhardt.

BUSINESS CLUB

To become better acquainted with modern business problems and with business men is the purpose of the Business Club.

"C" ASSOCIATION

After winning a letter in football, cross country, basketball, baseball, track, tennis, or golf a prospective member of the "C" Association must be adequately initiated before he may become a member. One of the outstanding functions of the organization is to choose from among its members the best all-round sport to have his name added to the list of others on the Walter Brenneman Trophy; this year Verne Chandler was chosen.

FIRST ROW: Art Bright, Don Stevenson, Verne Chandler, Weldon Kincaide, Gerald Schroeder, Henry Martinez, Renaldo Savenelli. SECOND ROW: Ray Alexander, Tom Hathaway, John Sinclair, Jim Lucas, Leon Patterson, Russ Albert, Joe Butterworth. THIRD ROW: Joseph White, George Rosselot, Jack Colescott, Ray Swayne, David Jones, Walt Stalhut, Roy Turley, Max Moore.





SEATED: Laveta Smith, Al Kindig, Rose Ann Rider, Dr. Marple. STANDING: Trudy Fields, Wayne Smith, Betty Lou Ratliff, Grace O'Reilly, Bill Bemenderfer, Frieda Myers, Ruth Anderson, Charles Jones, Doris Davis, John Hupp, Shelia Meredith, Beulah Van Ostran, Eloise Bilby.

MUSIC CLUB

The Music Club is made up of music majors and minors. It affords a monthly meeting time for the like interests of these specialists in music. Some of the members are affiliated with the Music Educators' National Conference.

WOMEN'S ATHLETIC ASSOCIATION

For the purpose of furthering interests in athletic activities, the W. A. A. has been active in intramural activities such as volleyball, basketball, and badminton. Among this group are most of the inter-school girls basketball team.

SEATED: Shirley Moren, Judy Morgan, Phyllis Albright, Ruth Anderson, Martha Stone, Dorothy Schober. STANDING: Daisy Welsh, Betty Crawford, Dixie Key, Yvonne McMurray, Mary Clark, Rosalie Rapp, Carolyn Shrack, Mrs. Fouts, Carolyn Smittley, Marie Wainio, Carolyn Wade, Myrtle Garriott, Joyce Liechty, Doris Davis, Donna Turley, Darlene Galloway, Carolyn Morris.





FIRST ROW: Harry Smith, William Myers, Lionel Gouty, William Cutshaw, Armour Keller, Joseph White, Charles Peckham. SECOND ROW: Keith Russell, Bruce Porter, Charles Lane, James Allen, Alton Hawkins, Leland Brett, Charles Russell, Ray Buck.

CENTRAL MINISTERIAL ASSOCIATION

The C. M. A. consists of a students who are planning to enter the Christian ministry. Many of them hold part-time jobs in churches and hold evangelistic meetings. The organization is responsible for planning frequent chapel programs.

GIRL'S MISSION GUILD

Having as their primary purpose an ardent concern for missions, these girls hold monthly meetings to uphold their interest. A project of the Guild this year was to hold weekly prayer services in the girls' dormitory.

FIRST ROW: Kathryn Langford, Mary Alice Reddick, Lois Williams, Ethyl Hobson, Daisy Welsh, Thelma Washburn. SECOND ROW: Lorraine Zinck, Verda Spangler, Kathryn Neeley, Maybelle Runk, Ruth Clausius, Chris Livengood.





SEATED: Evelyn Myers, Doris Vass, Rhea Bonecutter, Catherine Lane, Marjorie Colescott, Joyce Moore, Ruth Roberts. STANDING: Leona Armstrong, Colleen Patterson, Josephine Newnum, Dorothy Keller.



STUDENT WIVES

Each member of this club has one thing in common—a "hubby". Most of these men and a few of the wives are students here at I. C. C. Meeting monthly for their business and social time, the busy wives are assured of a free night out.

INTERNATIONAL RELATIONS CLUB

The International Relations Club, under the sponsorship of Dr. St. Clair, shows interest in world affairs and meets occasionally to discuss them.



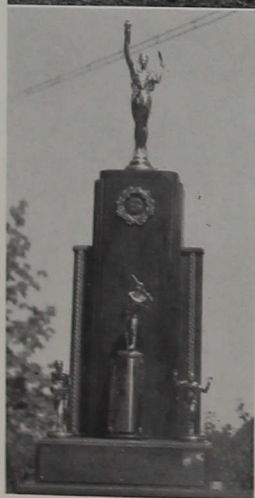
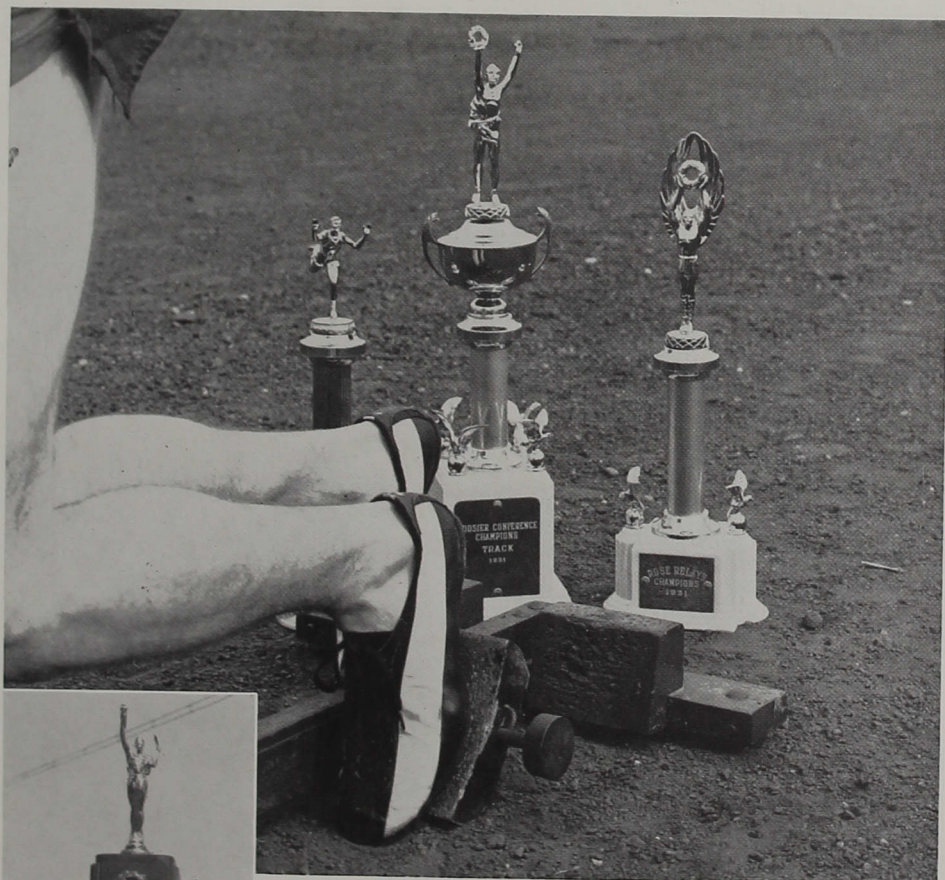
SEATED: Harry Harrison, Elsa Carter, Virginia Young, Verne Chandler, Dr. St. Clair, Floyd Mevis.





The Choir Tripped - But
Didn't Fall Flat

Three stooges... That was a hot one, prof!...
Chawmed, I'm sure!... Hot Dog, here comes one!
... Hiya, Peg!... Madame J... Wrong-way, Miller
... Don't hit her, George, she might hit back.



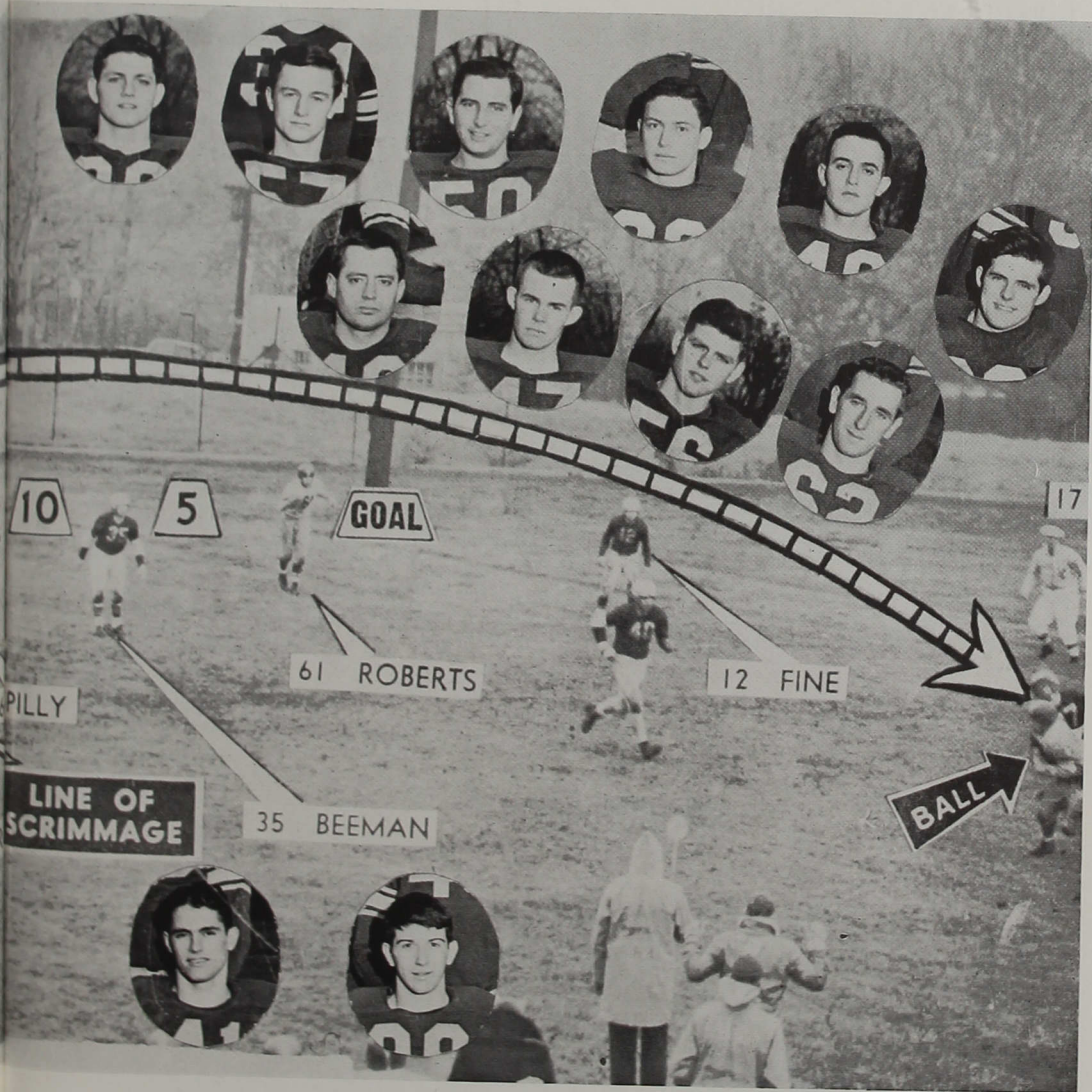
Sports

The All-Sports Trophy here we show
Won for us by stars like Joe.



ALL CONFERENCE SPORTS TROPHY

After barely missing three consecutive years, the All-Conference Sports Trophy became a reality this year as featured in the winning Homecoming Day Parade float— "Within Our Reach." Firsts in cross country, basketball, and track, a third in golf, fourth in baseball, and fifths in football and tennis enabled Central to shade Hanover by $7\frac{1}{2}$ points. A picture of this 35-inch trophy is shown on the division page.



ACTION PHOTO: COURTESY OF THE INDIANAPOLIS TIMES

Quarterback Ray Swayne completes a 30 yard pass to Walter Stahlhut as Canterbury defeated Central 7 to 6.

Lettermen: TOP ROW, LEFT TO RIGHT: Tom Barnes, Norman Brown, Marion Burleson, Verne Chandler, Bill Crowe, Jack Hall, Bob Hilycord, Joe Hurrell, Cy Kincaide, Anastacio Martinez, Henry Martinez, and Charles Lentz. SEC-
OND ROW: John Preston, Dean Ransburg, Dale Robinson, Renaldo Savenelli,
Gerald Schroeder, Roland Schroeder, Arnold Spilly, Walter Stahlhut. BOTTOM
ROW: Ray Swayne Ronald Strachen, Fred Thayer, and Charles Zopf. NOT
PICTURED: Dave Shaw, and Wendell Roberts.



FIRST ROW: Norman Brown, Jack Hall, Dean Ransburg, Ray Swayne, Chet Wiese, manager; Charles Lentz, Don Thomas, Tom Barnes, Bill Crowe, Carleton Terrell, Marion Burleson. SECOND ROW: Bob Hotz, Gerald Schroder, Dale Robinson, Charles Zoph, Hal Cole, Ronald Strachan, Walt Stalhut, Fred Thayer, Joe Hurtle, Anastacio Martinez, John Preston. THIRD ROW: Joe Bartkiewicz, Bob Hilycord, Dave Robinson, James Brown, Dick Pollard, Henry Martinez, Roland Schroeder, Arnold Spilly, Renaldo Savenelli, Verne Chandler, Cy Kincaide, Coach Walt Bartkiewicz.



FOOTBALL

In his first season as coach of the Central gridders, Coach Walt Bartkiewicz and his team rolled over Huntington and Franklin before injuries began to cripple the squad. During the rest of the season, there were always three to five of the first string out with injuries.

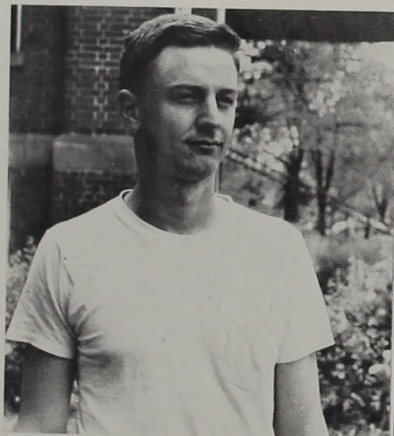
Walt Bartkiewicz was assisted by his brother, Joe. Both brothers were regulars on Indiana University's team in 1949. Their enthusiasm and techniques of the game will cause many sleepless nights for the other coaches in the conference.

In conference play, Central finished fifth with a 2-4-1 record. Five boys will be lost from this year's squad by graduation. These are Verne Chandler, end; Gerald Schroder, tackle; Welton Kincaide, tackle; Henry Martinez, guard; and Wendell Roberts, end.

SEASON RECORD

I. C. C.	Opp.
24	Huntington 7
12	Franklin 0
0	Hanover 6
31	Manchester 26
7	Indiana State 27
7	Anderson 7
6	Canterbury 7
7	Taylor 19
19	Earlham 40

Won 3, lost 5, tied 1.



MOST VALUABLE

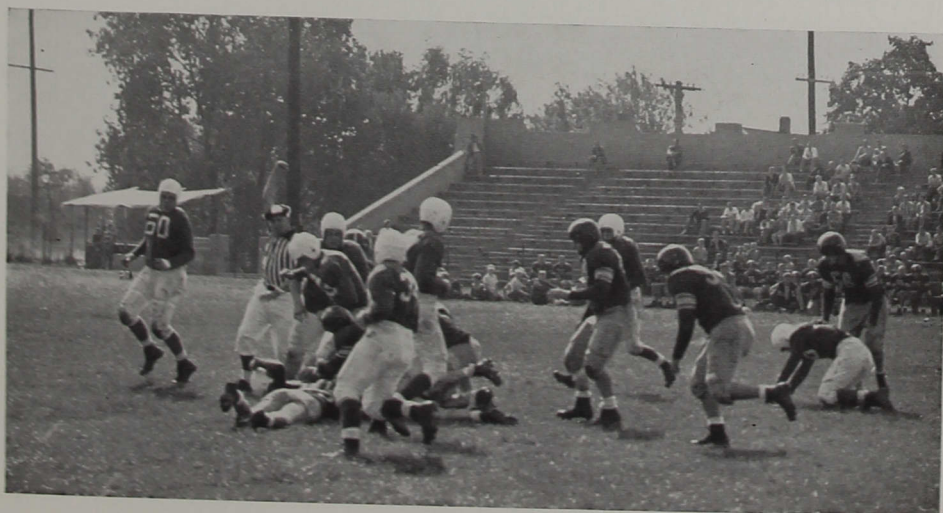
Sophomore end, Joe Hurre, was chosen the most valuable football player by the team. Joe, who prepped at Southport, was one of the best defensive ends in the conference.



CAPTAIN

Guard Dale Robinson, a junior from Springfield, Illinois, was elected captain by his team. Dale was a terror to opposing quarterbacks, spending most of his time in their backfield.

Central vs. Huntington





FIRST ROW: Roy Turley, J. C. White, Tom Hathaway, Art Bright.
SECOND ROW: Dave Jones, Russ Albert, Joe Butterworth, Leroy Rapp, Coach Rice.

CROSS COUNTRY

Central's harriers brought to I. C. C. their first Hoosier Conference cross country championship by scoring 43 points to Taylor's second place total of 66 points in sub-freezing weather.

Jack Rice, former Butler ace, coached the Greyhounds to a 6 won-1 lost record before adding the championship trophy. Butler tallied Central's only downfall in dual competition as the harriers placed sixth in Big State and third in Little State. Jack carefully planned the training schedule so that each boy reached his peak at the time of the conference meet while also inspiring team spirit and sportsmanship for one of Central's finest teams.

The team elected Art Bright and Roy Turley honorary co-captains for the season. Each member of the squad will be back when fall rolls around again.

SEASON RECORD

I. C. C.		Opp.
15	Franklin	45
24	Taylor	34
17	Manchester	45
38	Butler	17
15	Canterbury	45
20	Anderson	35
17	Hanover	39

Hoosier Conference—First

Little State—Third

Big State—Sixth

BASKETBALL

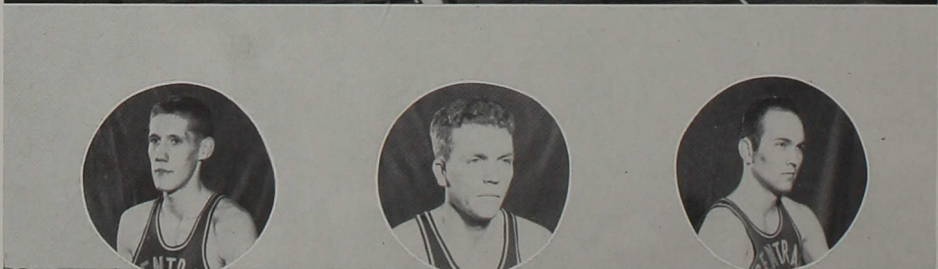
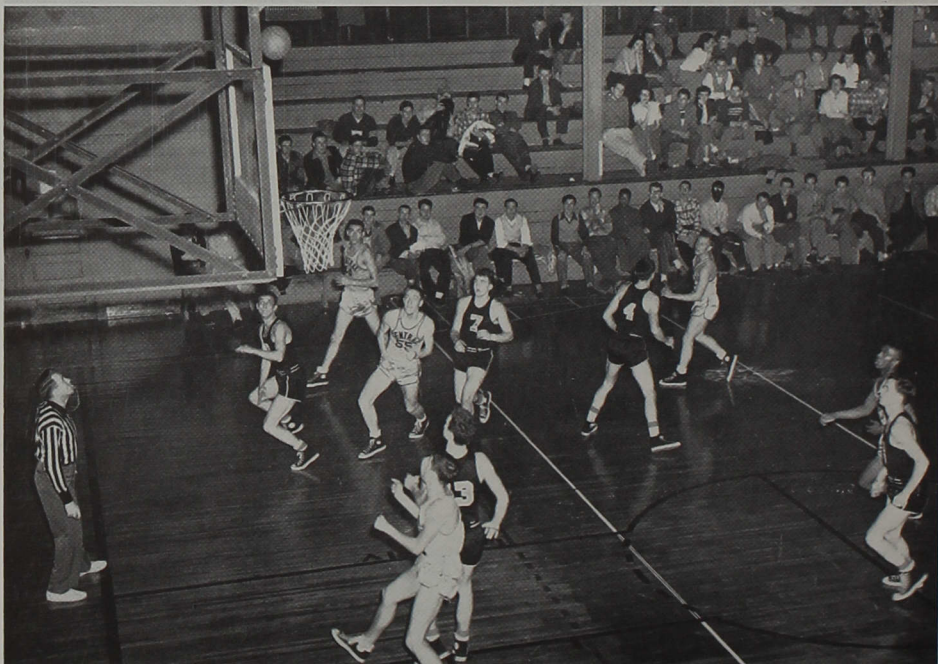
Coach Angus Nicoson's basketball squad continued to dominate the conference basketball picture by winning its third title in four years. After dropping its first two conference tilts, Central romped over the next ten conference foes to take the title. A third loss came at the hands of Canterbury, but the title was already secure. In the title deciding game against Anderson, Jack Colescott sank the winning basket from mid-floor with twenty seconds remaining for a 73 to 72 win.



Dwight Swails led the team throughout the season and was the state scoring champion. Three members of the squad will be lost by graduation; these are Don Stevenson, Bob Robison, and Swails.

FIRST ROW: Bill Greathouse, student manager; Warren Keyser, Jack Colescott, Dick Theil, Don Thomas, Jay Windell, Max Moore, Russ Albert, manager, Roy Turley, director of publicity. SECOND ROW: Don Stevenson, Bill Bright, Dick Pollard, Jim Lucas, John Sinclair, Bill Pickard, Dwight Swails, Leon Patterson, Bob Robison, Lowell Merryman, Dave Jones. THIRD ROW: Coach Bartkiewicz, Dean Ransburg, Ray Lee, John Lewellen, Russ Plummer, Bill Miller, Chuck Zoph, Glen Sharp, Paul Meadowbrook, Head Coach Nicoson.





Basketball Lettermen

TOP ROW: Bill Bright, Jack Colescott, Dave Jones, Jim Lucas.
 BOTTOM ROW: John Sinclair, Don Stevenson, Dwight Swails.

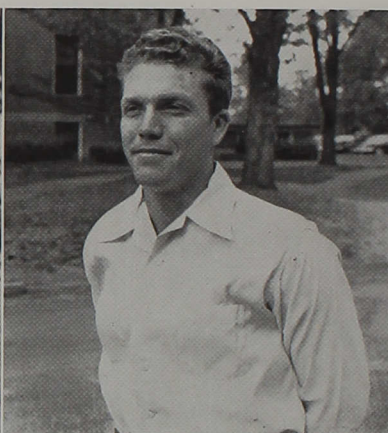


TOP ROW: Leon Patterson, Bill Pickard, Dick Pollard, Bob Robison.
 BOTTOM ROW: Dick Theil, Don Thomas, J. Windell.



MOST VALUABLE

Dwight Swails, who rewrote the records for the school and the state, was elected as the team's most valuable player. His single season high is 545 points, and he holds the state four year mark of 1764 points.



CAPTAIN

Don Stevenson, one of the hardest driving guards in this section of the state, was selected captain of the basketball team. Don's left handed shots at the end of a fast break spelled doom for many opponents.

SEASON RECORD

I. C. C.		Opp.	I. C. C.		Opp.
81	Huntington	66	77	North Central*	75
46	Eastern Kentucky	80	85	Canterbury	72
60	Hanover	64	70	Taylor	59
51	Franklin	57	57	Earlham	51
71	Taylor	66	57	Mancheser	47
67	Villa Madonna	38	73	Anderson	72
66	Ball State	62	71	Canterbury	77
72	Central Missouri*	75	75	Villa Madonna	72
88	Earlham	65	100	Huntington	57
62	Hanover	61	93	Tri-State	61
84	Manchester	69	66	Taylor	68
88	Anderson	65	79	Franklin	61
61	U. of Louisville	96	*Overtime		



FIRST ROW: Kenneth Ekstrom, Walt Dininger, Dave Jones, Allen Meyerrose, Tom Hathaway, Roy Turley.
SECOND ROW: Coach Bartkiewicz, Lemuel Mills, Bill Smith, J. C. White, Chuck Zoph, Paul Middlebrook, Joe Butterworth, Art Bright, Russ Albert, Coach Rice.



TRACK

Central's freshman-laden track team added the Hoosier Conference track trophy to their collection by garnering 52 points to Franklin's distant second place total of 37½ in the annual eight team affair. Two weeks earlier, Central won four trophies including the championship trophy by edging Hanover by one point, 62½ to 61½ for the Rose Relays Crown. Central's mile relay team, composed of Russ Albert, J. C. White, Dave Jones, and Allen Meyerrose, set a record winning time of 3:33.5.

Coaches Walt Bartkiewicz and Jack Rice led the team into the conference meet with a 4 won-1 lost record as Hanover edged Central in a triangular affair with Canterbury by one point in the last meet. Outstanding performers on the squad were Allen Meyerrose, Bill Smith, Paul Middlebrook, and Dave Jones who was elected captain for the year.

RECORD

I. C. C.		Opp.
70	Earlham	61
74½	Taylor	56½
80	Anderson	51

Rose Relays—First place

I. C. C. 68½, Hanover 69½, Canterbury 24

Hoosier Conference—First place

Little State—Fourth place

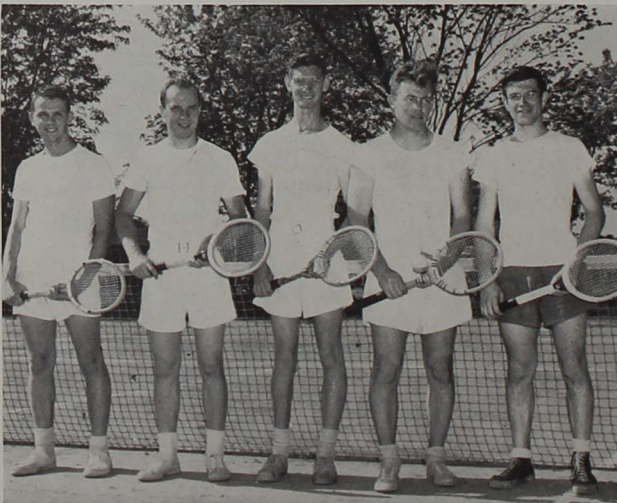


FIRST ROW: Dean Ransburg, student manager; Bill Bright, Woodrow Staton, Lowell Merryman, Jim Lucas, Joe Hurtle, Bob Robison, Gene Dietz, Kenny, the bat boy. SECOND ROW: Jack Colescott, Ray Swayne, Albert Berry, Dick Theil, John Lewellen, Max Moore, Ray Lee, Warren Keyser, Coach Nicoson.

BASEBALL

The baseball season started out well and ended well, but we would like to forget the in-between. That middle part of the season was the reason the Greyhounds finished fourth in the conference with a $7\frac{1}{2}$ - $5\frac{1}{2}$ record.

Loaded with outstanding freshmen and sophomore talent, the Greyhound nine should be strong for the next two or three years. Three pitchers, Bill Bright, Gene Dietz, and Ray Swayne will be back next spring. Jack Colescott was elected captain, and Max Moore received the most valuable player award.



TENNIS

The tennis team won two meets and lost three to finish fifth in the conference standings.

Squad Members: Don Robinson, George Rosselot, Bob McKinney, Walt Dininger, and LeRoy Rapp.

GOLF

Chuck Zoph, Tom Yeftich, Paul Bateman, and Lowell Merryman were members of the golf team which placed third in the conference meet.



COACHES

LEFT TO RIGHT: Jack Rice, cross country and track; Angus Nicoson, athletic director, basketball, and baseball; Joe Bartkiewicz, football; Walt Bartkiewicz, football and track.

These are the brains behind Central's athletic teams. Their combined efforts brought us a very successful year.

BACK OF OUR TEAMS . . .

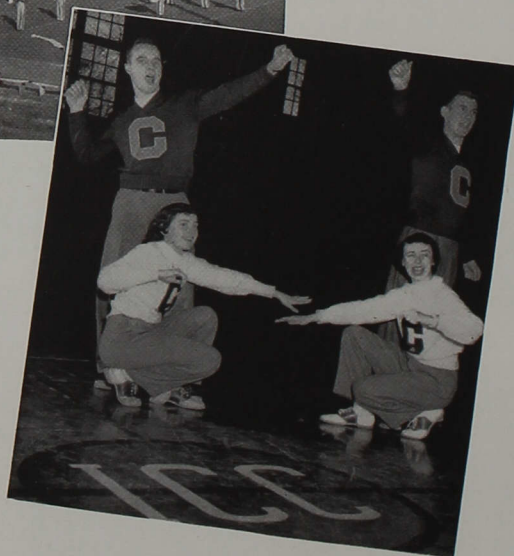
At every athletic contest, these groups were a factor in the success of our teams.



STUDENT MANAGERS: Dean Ransburg, Lowell Merryman, Bill Greathouse, Bill Bright, Russ Albert.



The Band was directed by Dr. Marple.



YELL LEADERS: Barbara Carter, Sheila Meredith, George Rosselot, Herman Emmert.



SITTING: Judy Morgan, Phyllis Albright, Ruth Anderson, Shirley Moren, Marie Wainio, Yvonne McMurray.
STANDING: Mary Clark, Carolyn Wade, Rosalie Rapp, Mrs. Fouts, Martha Stone, Betty Sackmire, Dorothy Schober.

GIRLS' BASKETBALL TEAM

The Whippets had a season's record of eight wins and three defeats. Hitting a remarkably high percentage of her shots, Martha Stone consistently led the team in scoring. Team members were equally divided among three classes— four juniors, four sophomores, and four freshmen.

Mrs. Lois Fouts, director of physical education, coached the team. Through participation on the intercollegiate basketball team or in intramural play, a girl may earn a "C" sweater.

"C" WOMEN

FIRST ROW: Shirley Moren, Phyllis Albright, Ruth Anderson. SECOND ROW: Betty Sackmire, Martha Stone, Judy Morgan.





Phabulos Photos

Hygiene for Gene...Sadie Hawkins again...
 Millie and Orie...Watch the bird, Chris!...
 Judy and friend...Turnabout...The stink—
 thinker...Ain't the spring grand?...Lavete at
 the console...ICC's answer to Martin and Lewis
 ...Little Miss Liechty.

Kingan & Co.



QUALITY MEATS and MEAT PRODUCTS

Since 1845

When you buy Kingan's
you buy the best!

General Offices
INDIANAPOLIS, INDIANA

CENTRAL PUBLISHING COMPANY

401 N. Noble — Indianapolis, Ind.

IF IT'S PRINTING YOU NEED
GIVE US A CALL

IM 4505

401 N. Noble

Graessle • Mercer
company

printers and binders



SEYMOUR, INDIANA

HORNADAY MILK COMPANY, Inc.

RICH—QUALITY
MILK

MA. 5335

1447 West Market

**ADDING MACHINE
SERVICE & SALES**

Adding

Bookkeeping

Calculating

Typewriter

Machines

SALES — SERVICE — RENTALS

SERVICE FIRST SINCE 1924

215 South Meridian Street

L. I. Bland

MA. 5346

BREMER BROTHERS

PLUMBING AND HEATING

1310 South Sherman Drive

Indianapolis, Indiana

BL 1539

Or

IR 1456



F. J. SCHUSTER COAL CO.

COAL—COKE—BUILDING MATERIALS

C. W. Braughton, Manager

GA 2431

824 East Troy

THE ENOS COAL MINING CO.

1405 Merchants Bank Building

ENOS AND ENOCO COAL

Indiana's Finest

KO-WE-BA

Canned and Frozen Foods

Coffee and Specialties

**KOTHE WELLS & BAUER
COMPANY., INC.**

50 S. Ko-We-Ba Lane

Indianapolis 7, Indiana

**MOONEY MUELLER WARD
COMPANY**

WHOLESALE DRUGGISTS

Sundries — Fountains — Fixtures

LI 1531

501 Madison Ave.

CHAS. E. ORME, INC.

5505 South Meridian

FLOOR COVERING — APPLIANCES
HARDWARE

ID 1471

Karl C. Wolfe

PRINTING

A Complete
Printing Service . . .
Addressing
Auto-typing
Mailing Our Specialty

107 S. Capitol Ave.
Indianapolis 25, Indiana
Phone RI. 2455

Compliments of

A FRIEND

SPECIAL SPORTS SERVICE

Fishing
Golf
Tennis
Baseball
Jackets — Sweaters
Jantzen — Bathing Suits

SMITH-HASSLER COMPANY, INC.

219-21 Massachusetts Avenue
Indianapolis, Indiana

THE TRI-ART PRESS, INC.

PRINTERS — PUBLISHERS

We Print The Reflector

L. W. Brumit, President
A. O. KOETT, Secretary-Treasurer

FR 0422

225 N. New Jersey St.

WEBER APPLIANCE CO., INC.

Manufacturer
WEBBER FREEZERS
and dealer in
Hot Point Appliances
Westinghouse Appliances

2740 Madison Avenue

ID 0492

WILLIAM WEBER & SONS

Wholesale Dealer in

FINE MEATS

GA 4647

Beech Grove, Indiana

GO BY BUS



Relaxed and car-free . . . at 1/3
the cost of driving!

Fast, Frequent Service between

INDIANAPOLIS — FORT WAYNE

TERRE HAUTE

For Information Call

PLAZA 8671

250 W. Ohio St.



THE WADLEY COMPANY

POULTRY — BUTTER — EGGS

WHOLESALE DEALER

GA 2431

824 East Troy

GLADYS ALWES MUSIC SHOPPE

Music for all Instruments
Standard Sheet Music — Octavo Music
Violin Accessories

FR 9501 120 Pennsylvania St.
Mail Orders Given Prompt Attention

Compliments of

A FRIEND

Compliments of

JOHN W. DEEVER, M. D.

And

ROBERT R. KOPECKY, M. D.

GA 4969 4131 Shelby St.

DUNCAN'S REGAL MARKET

QUALITY MEATS AND GROCERIES

ID 1692 4011 Shelby

FRAKES ELECTRIC COMPANY

426 East New York Street

New Motor and Repair Service

Compliments of

**INDIANA CANDY & TOBACCO
COMPANY**

FR 1336 210 E. Maryland

JORDAN BROS. COAL CO., INC.

QUALITY COAL AND COKE

CA 8400 1020 E. North St.

**KELLY'S BARBER &
BEAUTY SHOP**

Quality Service and Reasonable Prices
UNIVERSITY HEIGHTS

GA 1094 4005 Shelby St.

MADISON AVE. FLOWER SHOP

2457 Madison Avenue

GA 4446 Indianapolis, Ind.

"SAY IT WITH FLOWERS"

MARIEN HARDWARE COMPANY

Hardware — Paints — Plumbing
And Electrical Supplies

GA 7551 3604 Madison Ave.

Compliments of

**MATTOX & MATTOX
DESIGNERS & BUILDERS**

4200 S. Meridian Street GA 2684

Commercial & Industrial Construction
We Furnish Plans

MEDO - SWEET DAIRY

Rd. 31 and Hanna Ave.

Mamma! There goes our Milkman

MUTUAL CHINA COMPANY

128-132 South Meridian Street

China—Glass—Silver—Gift Items
Hotel and Restaurant Supplies

**SANDERS CLEANERS & SHIRT
LAUNDRY**

QUALITY WORK — QUICK SERVICE
Cash and Carry — Pick-up and Delivery

ID 0484 3709 Madison Ave.

You'll Always Be Ahead At

SUPERIOR CHEVROLET INC.

552 E. Washington St.

Complete Service and Parts

Phone Lincoln 4378

Factory Trained Mechanics

E. J. Voelker

FIRST WITH CHEVROLET IN INDIANAPOLIS SINCE 1923



**It's easy to keep
a half gallon
of Borden's
at Home!**



Elsie ©TBC

This shows the actual size of a half-gallon of Borden's Ice Cream in a typical modern refrigerator... with plenty of room left for meats and other frozen foods, too! Lunches, desserts, party treats are easier and quicker with a half-gallon of Borden's handy. Let Borden's Ice Cream help you plan easy all-day-round menus at low cost!

THERE'S A
Borden's
ICE CREAM
DEALER NEAR YOU



Compliments of

Solitaire Beverages Inc.,

1825 Shelby Street

INDIANAPOLIS, INDIANA

Ride With

EDGEWOOD WHEELMEN, INC.

5508 Madison Avenue

Indianapolis, Indiana

RACING — TOURING — HOSTELING

Club Affiliated with:

The League of American Wheelmen

Amateur Bicycle League of America

American Youth Hostels

Compliments of

A FRIEND

H. A. DAUM

Keys — Grinding — Repairing
Safes Opened — Combinations Changed
Locks Master-keyed — Repaired

LAWN MOWERS

Sharpening — Parts — Repairing

LI 2825

426 N. Alabama

Informal Photos In This Book
by

FLOYD MEVIS

Indiana Central
College Photographer

Southern Circle Drive-In

GOOD FOOD AND DRINKS

Just South of Hanna on Highway 31

378.05
I39o
1951
48754

Indiana Central College.
The Oracle...

FOR REFERENCE

NOT TO BE TAKEN FROM THIS ROOM

CAT. NO. 1935

LIBRARY BUREAU

