


AI for Student Assessments

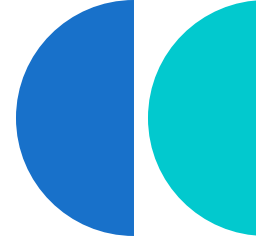
Lora Dingleline, PT, DPT





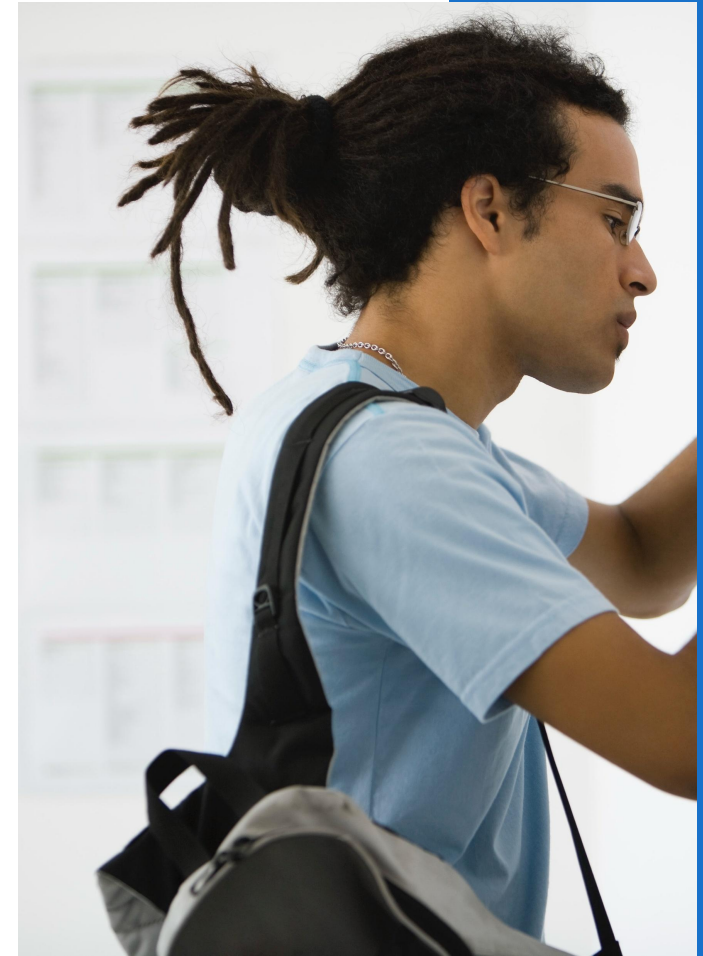
Agenda

- 01 **AI Basics**
Brief overview of using AI
 - 02 **Student Assessments**
Types of Assessments and Importance
 - 03 **Aligning with Learning Objectives**
Strategies for aligning assignments with course or lesson objectives.
 - 04 **Using AI to Design Assignments**
Introduction to developing prompts and using AI to get what you want.
 - 05 **Rubrics for Grading**
Techniques to create effective rubrics.
 - 06 **AI Checkers and Grading**
Using tools to grade student assignments and check for AI use.
- 



01

AI Basics and Uses



What is Artificial Intelligence?

- Computers performing tasks that would require human intelligence
- Generative AI
 - Large Language Models
 - Generative Adversarial Networks
 - Variational Autoencoders



Which AI Tool Should I Use?!

- [ChatGPT](#), [Gemini](#), [Claude](#), [Microsoft Copilot](#) - non-specific generative AI tool. Creates content, brainstorm, suggests ways to improve efficiency, create images, summarizes readings, etc.
- [Curipod](#)- creates interactive PP presentations using existing presentations
- [NotebookLM](#)- Generates summaries, outlines, study guides, podcasts
- [Sora](#), [Synthesia](#), [Adobe Firefly](#)- video and image creators





Writing a good AI prompt...

01

Be clear and specific

02

Include the goal and desired tone

03

Provide context if possible

04

Use examples if able

05

Ask for revisions



Using AI in Education

Personalized learning tools

Generating classroom content

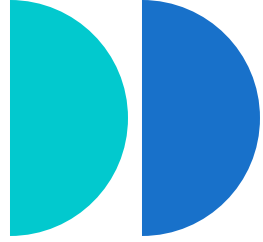
Image, podcast, and video creation

Administrative tasks

Curriculum Design

Grading and Giving Feedback

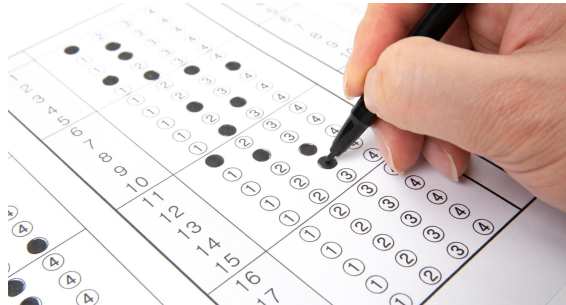




02

Student Assessments

AI in Student Assessments



Tests/Quizzes

Using course content
create test questions
using AI.



Group Projects

AI helps brainstorm
project ideas based on
course content.



Class Assignment

AI created case studies,
research projects, in-class
activities, etc.



03

Aligning with Learning Objectives

AI & Learning Objectives



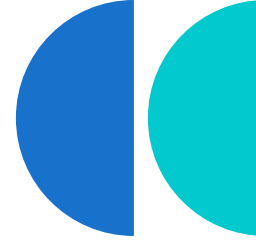
Lesson Objectives

Use AI to take existing presentation to develop lesson objectives



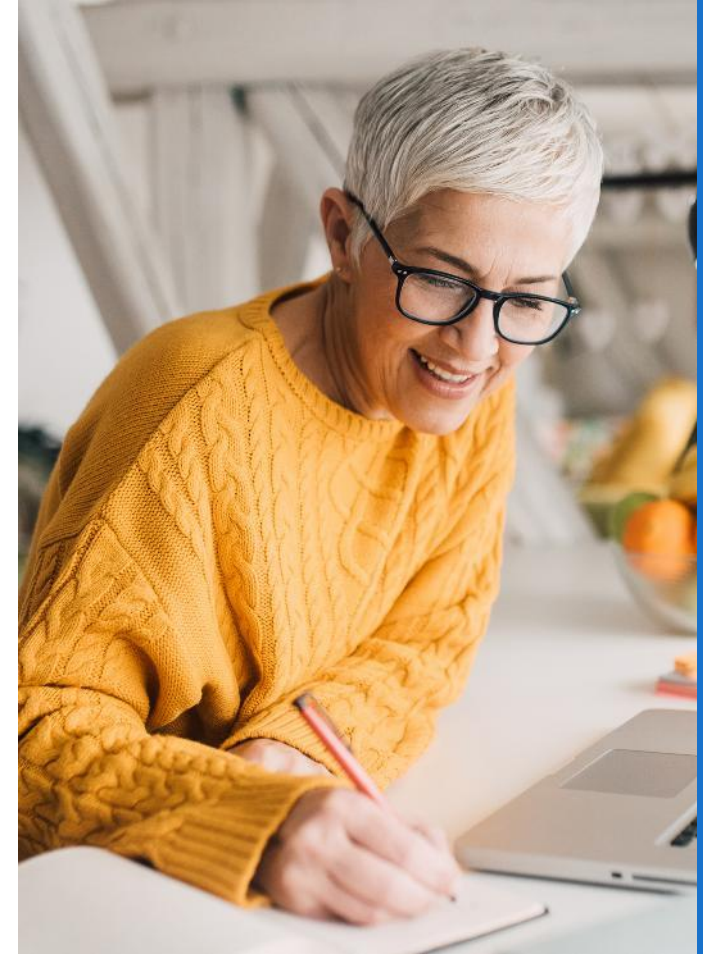
Alignment with Assessment

Ensure learning objectives are met by aligning assessments



04

Using AI to Design Assignments





Student Assignments & AI

- Tailor to diverse student needs
- AI can analyze student performance and suggest modifications
- AI can improve assignment quality by providing feedback on clarity, grammar, and relevance



AI Created Assignments

Designing your prompt

- Specific goals/parameters
- Aligning with course content

[Case Studies](#)

[Group Project](#)

Research on AI in Student Assessment and Grading

The AI Assessment Scale (AIAS): A Framework for Ethical Integration of GenAI in Educational Assessment. Perkins, M. et al.

AI-Assisted Marking: Functionality and limitations of ChatGPT. Li, J, et. al.

Examining the Efficacy of ChatGPT in Marking Short-Answer Assessments. Morjaria, L., et al.

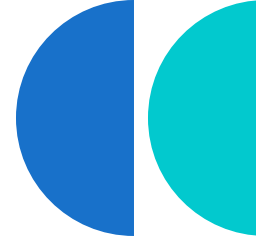
Scale Levels and Descriptions

1	NO AI	<p>The assessment is completed entirely without AI assistance. This level ensures that students rely solely on their knowledge, understanding, and skills.</p> <p>AI must not be used at any point during the assessment.</p>
2	AI-ASSISTED IDEA GENERATION AND STRUCTURING	<p>AI can be used in the assessment for brainstorming, creating structures, and generating ideas for improving work.</p> <p>No AI content is allowed in the final submission.</p>
3	AI-ASSISTED EDITING	<p>AI can be used to make improvements to the clarity or quality of student created work to improve the final output, but no new content can be created using AI.</p> <p>AI can be used, but your original work with no AI content must be provided in an appendix.</p>
4	AI TASK COMPLETION, HUMAN EVALUATION	<p>AI is used to complete certain elements of the task, with students providing discussion or commentary on the AI-generated content. This level requires critical engagement with AI generated content and evaluating its output.</p> <p>You will use AI to complete specified tasks in your assessment. Any AI created content must be cited.</p>
5	FULL AI	<p>AI should be used as a 'co-pilot' in order to meet the requirements of the assessment, allowing for a collaborative approach with AI and enhancing creativity.</p> <p>You may use AI throughout your assessment to support your own work and do not have to specify which content is AI generated.</p>

AI Assessment Scale (AIAS)

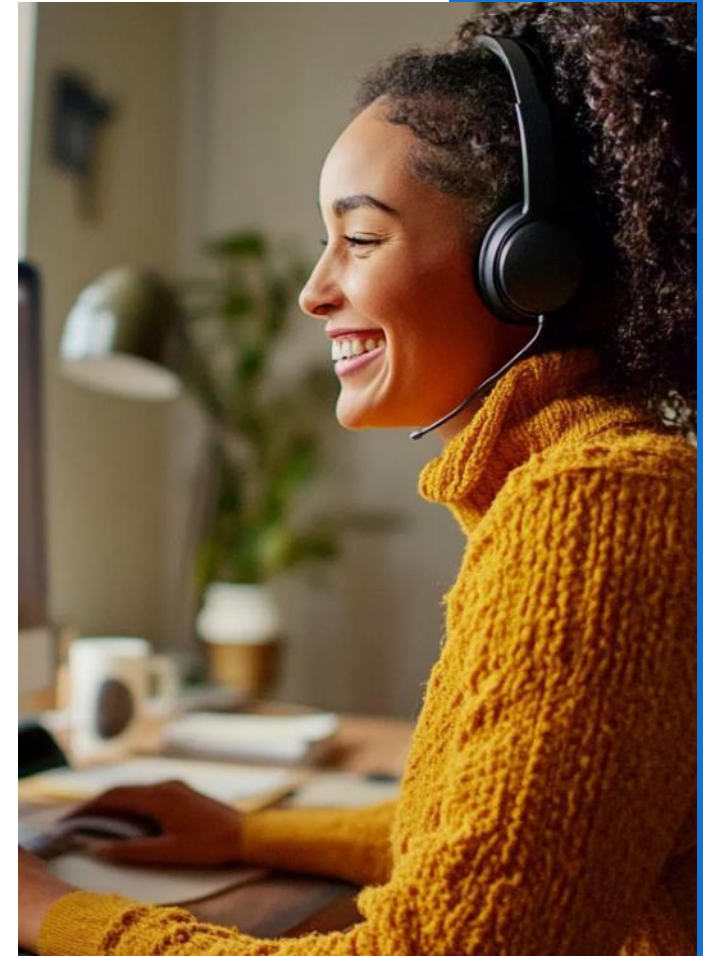
- Student use of AI
- Specify level of AI use for different assignments
- Clear guidelines / consequences for AI use

Table 1 The AI Assessment Scale



05

AI Created Rubrics





Grading Rubrics

Objective Measure

Helps educators be objective with grading written content

Holistic vs. Analytic


Holistic: overall assessment of performance quality

Analytic: assess different aspects of a performance/assignment

Task Specific vs. General

Task-Specific: Designed for a specific assignment or task, often used for grading

General: used across different assignments that address the same learning outcome or student self-assessment



AI Created Rubrics



- Design prompt using existing student assignment
- Be specific with points, categories, and parameters
- Ask AI to adjust

[Reflection Rubric](#)

06

AI Checkers and Grading



AI for Grading



Current Research

AI used in medical education to provide grades to narrative responses

AI-Driven Tools

Gradescope, Turnitin, Grammarly, etc.

Pros & Cons

- + More objective than humans
- + Improves Efficiency
- May miss nuance, not comprehend humor, and lacks understanding of certain situations.
- Ethical Concerns

Using AI Checkers

- Can be one of several tools used to provide feedback to students
- Be careful putting too much weight on AI Checker analysis
- [Quillbot](#), [Grammarly](#), [ZeroGPT](#)

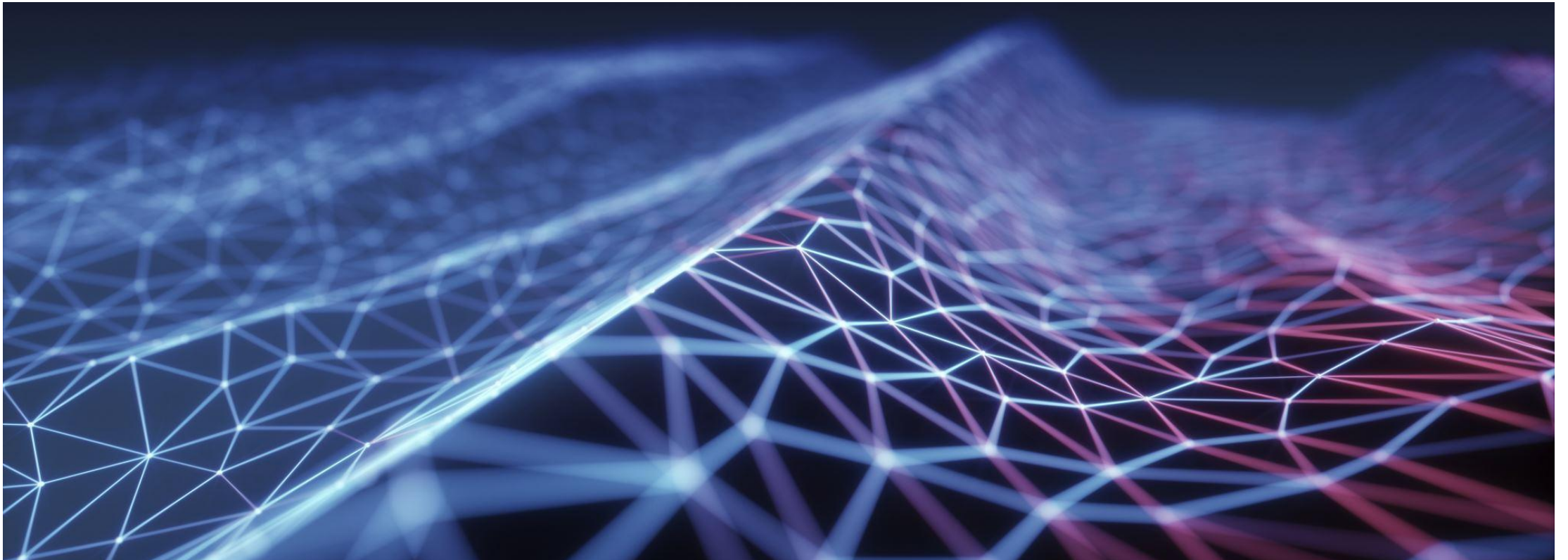


Let's Try it Out!

- Break-out rooms (10 min)
- Pick one of the following to develop for your class
 - Lesson or Course objective(s)
 - Student Assignment, Activity, or Case Study
 - Rubric for an existing assignment



The Future of AI in Education



Questions?

Lora Dingledine, PT, DPT
dingledinel@uindy.edu

